

Breeding & Market Beef Guidelines

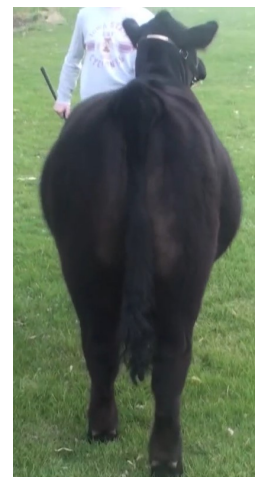
General Guidelines:

We ask that the exhibitors treat this as they would a live show and wear an approved 4-H/FFA shirt (or a plain white shirt). Livestock exhibitors should be in jeans and wearing closed toed shoes. Photos/Videos are recommended to be taken the week of July 20th. Some Entries will require declared weights (try to be as accurate as possible if you don't have access to a scale).

Photo Requirements:

- ◆ The exhibitor must be in the picture
- ◆ Registered animals must submit a picture of the registration papers
- ◆ Provide a front view, profile view and rear view of the animal outside in a well lit location
- ◆ Photos should be named ExhibitorLastName_Breed/Class_Tag#_NameofView
 - ◆ Example: Doe_AngusHeifer_281N_Profile

Example:



Video Requirements:

- ◆ The exhibitor must be in the video
- ◆ Start the video by showing the animals tag #, Hold phone/camera horizontally
- ◆ Do not zoom in or out and must be a continuous video outside, in a well lit area
- ◆ Keep videos between 1-2 minutes
- ◆ Be aware of your surroundings, try to choose some place with limited distractions in the background.
- ◆ Name your video ExhibitorLastName_Breed/Class_Tag#
 - ◆ Example: Doe_AngusHeifer_281N

Example: [Click Here](#)



Breeding Beef Classes

Beef Classes

Judge: Jacob Hinshaw

All entries must be completed and submitted in [FairEntry](#) by Monday, July 27th at 11:59 p.m.

Results for the beef show will be released by August 8th.

BREEDING BEEF

- ♦ **Angus**
- ♦ **Charolais/Charolais Composite**
- ♦ **Chianina**
- ♦ **Gelbvieh**
- ♦ **Hereford/Polled Hereford**
- ♦ **Miniature Hereford**
- ♦ **Limousin**
- ♦ **Lim-Flex**
- ♦ **Maine-Anjou High %**
- ♦ **Mainetainer**
- ♦ **Maine-Anjou—Angus**
- ♦ **Red Angus**
- ♦ **Foundation Red Angus**
- ♦ **Salers**
- ♦ **Shorthorn**
- ♦ **Shorthorn Plus**
- ♦ **Simmental**
- ♦ **Foundation Simmental**
- ♦ **All Other Breeds**
- ♦ **Commercial Heifers**
 - ♦ **Breed Champions & Reserve Champions**
 - ♦ **Champion Commercial & Reserve**
 - ♦ **Champion Produce & Reserve**
 - ♦ **Supreme Overall Heifer, Reserve, 3rd, 4th & 5th Overall**

COW & CALF

- ♦ **First Calf Cow/Calf**
- ♦ **Second Calf Cow/Calf**
- ♦ **Third Calf or older Cow/Calf**
 - ♦ **Champion First Calf Cow/Calf & Reserve**
 - ♦ **Champion Second Calf Cow/Calf & Reserve**
 - ♦ **Champion Third Calf Cow/Calf & Reserve**
- ♦ **Breeding Beef Bucket Calf—2nd year**
 - ♦ **Champion Breeding Bucket Calf—2nd year & Reserve**
- ♦ **Produce(Home Raised) Breeding Beef**
Product of a member's own former 4-H/FFA project
 - ♦ **Champion Produce & Reserve**



Market Beef Classes

Beef Classes

Judge: Jacob Hinshaw

All entries must be completed and submitted in [FairEntry](#) by Monday, July 27th at 11:59 p.m.

Results for the beef show will be released by August 8th.

MARKET BEEF

- ◆ Produce(Home Raised) Market Beef
Product of a member's own former 4-H/FFA project
- ◆ Champion Produce & Reserve

- ◆ Market Heifer
 - ◆ Champion & Reserve Champion Market Heifer
 - ◆ Grand & Reserve Grand Champion Market Beef, 3rd, 4th, 5th Overall

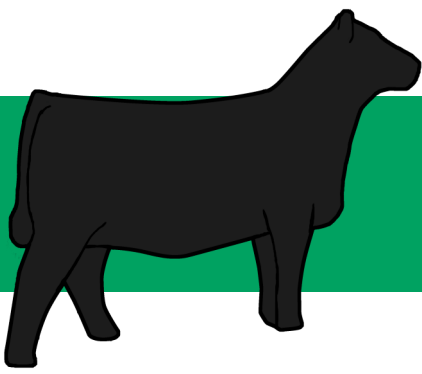
Breed Steer Classes

- ◆ Angus
 - ◆ Charolais
 - ◆ Chianina
 - ◆ Gelbvieh
 - ◆ Hereford/Polled Hereford
 - ◆ Miniature Hereford
 - ◆ Limousin
 - ◆ Maine-Anjou
 - ◆ Red Angus
 - ◆ Salers
 - ◆ Shorthorn
 - ◆ Shorthorn Plus
 - ◆ Simmental
 - ◆ All Other Breeds
- Breed Champion & Reserve Champion**

- ◆ Market Beef Bucket Calf—2nd year
 - ◆ Champion Market Beef Bucket Calf—2nd year & Reserve

Crossbred Steer Classes

- ◆ Champion & Reserve Champion Lightweight Steer
- ◆ Champion & Reserve Champion Mediumweight Steer
- ◆ Champion & Reserve Champion Heavyweight Steer
- ◆ Champion & Reserve Crossbred Market Steer



Other Project Area Ideas

Some fun ideas to expand your learning in the Beef Project Area that can also be static exhibits:

♦ **Communication**

- ♦ **Teach someone the essential traits in selecting a breeding heifer.**
- ♦ **Create a poster showing the beef cuts and how to prepare them.**
- ♦ **Share a presentation on the importance of following drug labels.**

♦ **Animal Science/Veterinary Science**

- ♦ **Research and learn about genetics and how to select the right bull for your heifer**
- ♦ **Find out more information on proper nutrition for your animal**
- ♦ **Learn about vaccinations and withdrawal times**

♦ **Leadership**

- ♦ **Arrange a tour of your farm.**
- ♦ **Start a beef livestock judging team with the help of an adult volunteer.**
- ♦ **Lead a beef grooming and showmanship clinic for other 4-H members.**

Publicity Photograph Requirements

- ♦ **Youth in approved 4-H/FFA shirt with meat goat**
- ♦ **Will be used for posted results (online, social media)**

Helpful How To's:

- ♦ **How to upload a video to YouTube [PDF](#) | [VIDEO](#)**
- ♦ **How to Submit a Livestock Exhibit Entry in FairEntry [PDF](#) | [VIDEO](#)**

Important Info:

- ♦ **Fairbook Link: <https://www.extension.iastate.edu/scott/sites/www.extension.iastate.edu/files/scott/Official%20Livestock%20Fairbook%202020.pdf>**
- ♦ **FairEntry Link: <http://mississippivalleyfair4h.fairentry.com/>**
- ♦ **Questions– Contact Emily Lyon ejlyon@iastate.edu**