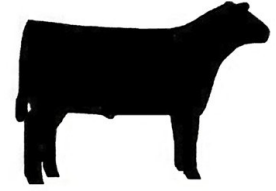


**Support
4-H**



- ◆ Open to adults (not currently showing as a 4-H or FFA member)
- ◆ Show attire required: hard soled boots, and appropriate dress.
- ◆ See 2023 Howard County Fairbook for Rules
www.extension.iastate.edu/howard/content/mighty-howard-county-fair
- ◆ Russell Fitzgerald Memorial Trophy and Sue-Z-Q's Gift Certificate awarded to winner.
- ◆ Sponsored by:
*Howard County
4-H Alumni Group*
- ◆ Contact Committee:
—Lowell Dohman
(641)220-4425

Adult Celebrity Beef Showmanship Class



**Saturday, June 24,
2023**



Entry Fee

\$100 per Adult
Entry

Payable to:
Howard County
4-H Alumni
Group

Must pay prior
to participation!

**This class will fol-
low the 4-H/FFA
youth classes!**

Beef

Animals will be
a current 4-H or
FFA member's
shown at the
2023 Fair

Proceeds to Benefit

Howard County
4-H Alumni
Youth
Scholarships
and 4-H
Enrollment Fees

Registration

10:00 AM-11:00 AM
Reicks View Ag Education Center
Waivers must be signed before
showing!!

Payment should be either cash or check, made payable to Howard County Extension. Credit card payments will not be accepted. The fees for service will be used to off-set direct expenses and to support the 4H Youth Scholarships and 4H enrollment fees in Howard County. This institution is an equal opportunity provider. For the full non-discrimination statement or accommodation inquiries, go to www.extension.iastate.edu/diversity/ext.



IOWA STATE UNIVERSITY
Extension and Outreach