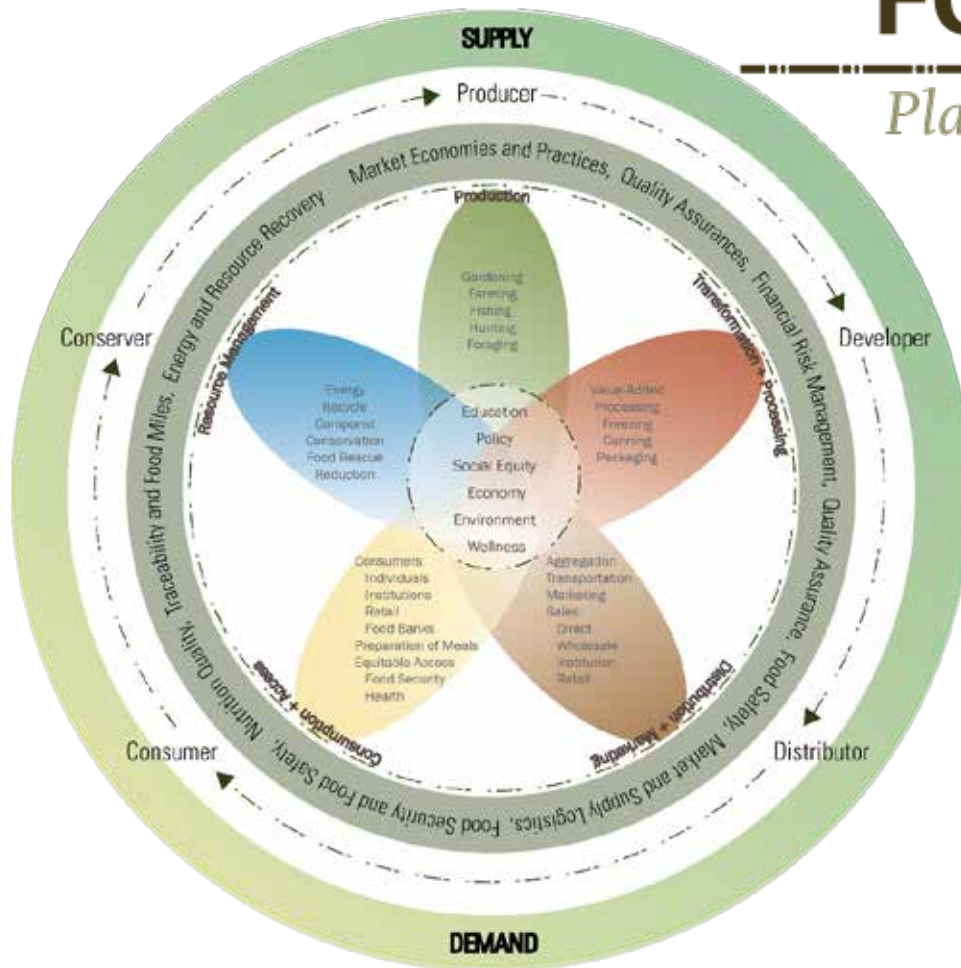
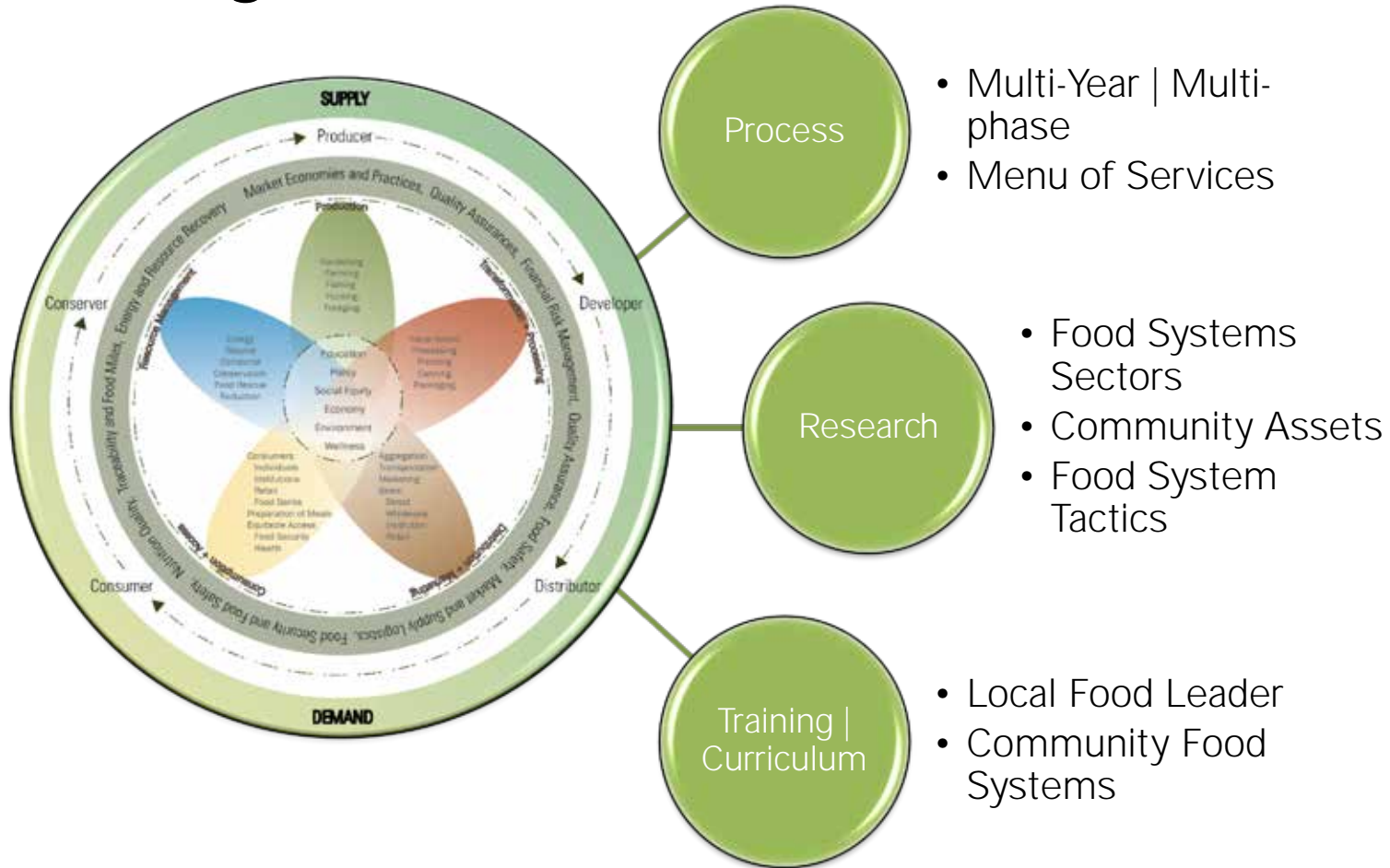


COMMUNITY FOOD SYSTEMS

Planning, Consulting & Design



Community Food Systems Today



Process: Menu of Services

- Full Community Process
- Coalition Development Assistance
- Community Food Systems Assessment Development
- Public Input Sessions Materials and Hosting
- Design and Technical Assistance Scopes of Work



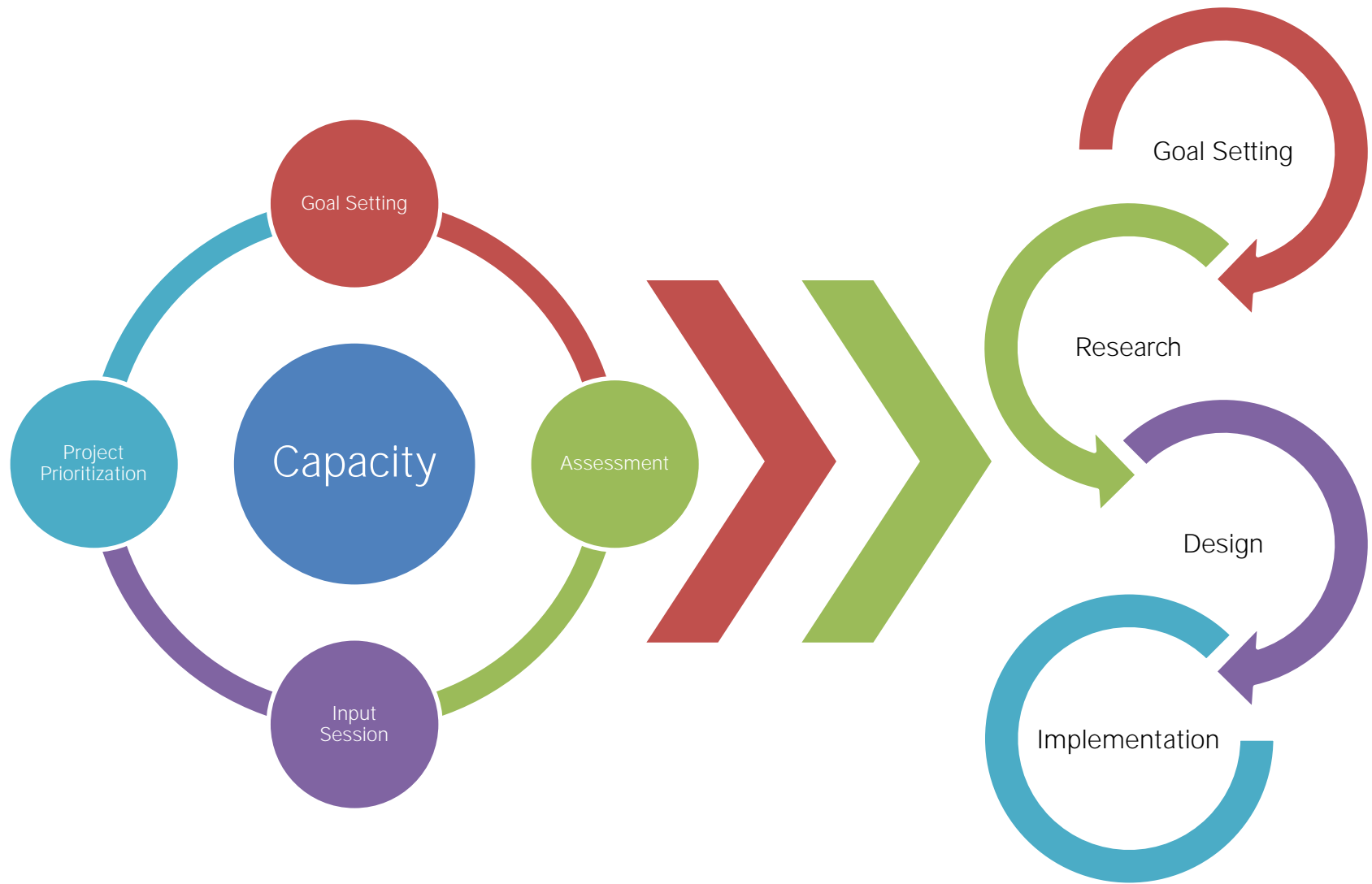
Full Program



- Develops trust
- Assesses existing conditions
- Prioritizes projects
- Determines shared-metrics

- Sets goals for specific projects
- Designs priority projects
- Creates momentum
- Implements Programs/ Projects







Mission: To contribute to community resiliency and wellness by fostering connections and strengthening our tristate food system.

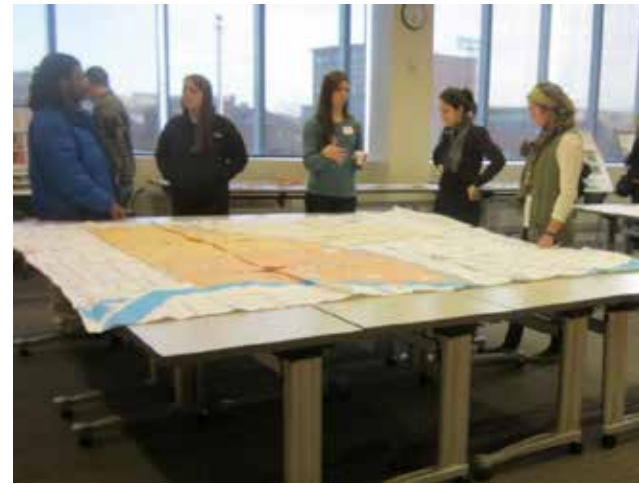
Vision: Producers, consumers, and institutions collaborating to grow an equitable and sustainable Tri-State community food system

Core Values:

- Collaboration: intentional integration of numerous organizations and individuals to accomplish collective goals for the tri-state food system
- Justice: willful discussion and action to promote inclusion, equity, and empowerment for all individuals, organizations, and businesses in our community
- Wellness: deliberate effort to establish personal, social, and community health opportunities
- Education: public outreach to promote local foods and opportunities to get involved in Dubuque Eats Well
- Stewardship: maintaining environmental responsibility and integrity for ecologically sound food system practices



Public Input Sessions



Community Research

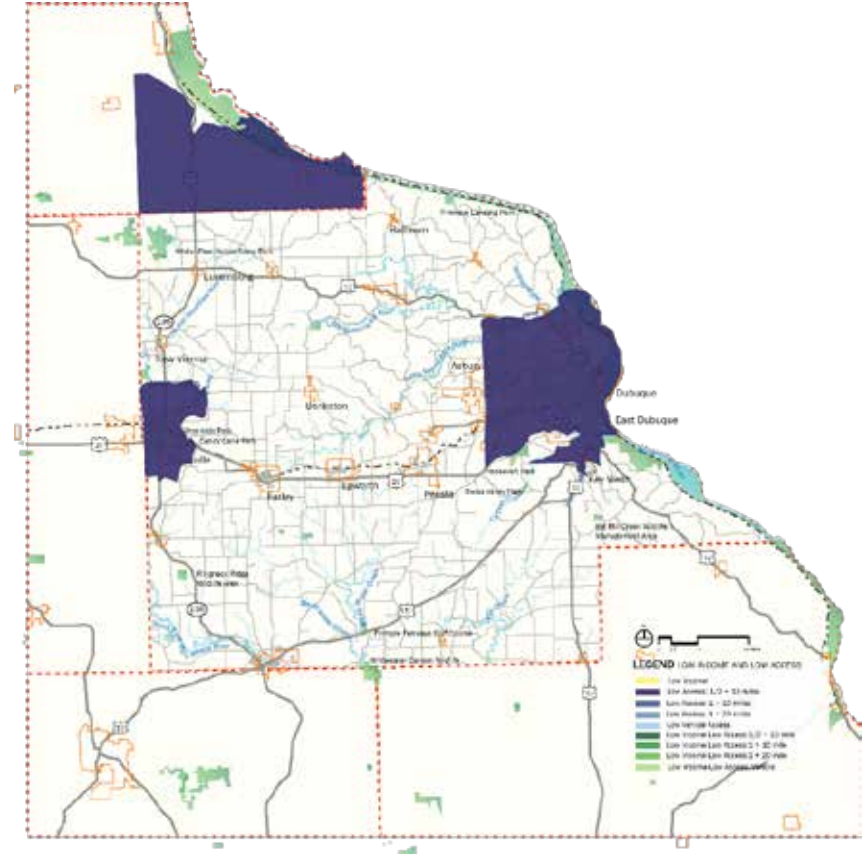
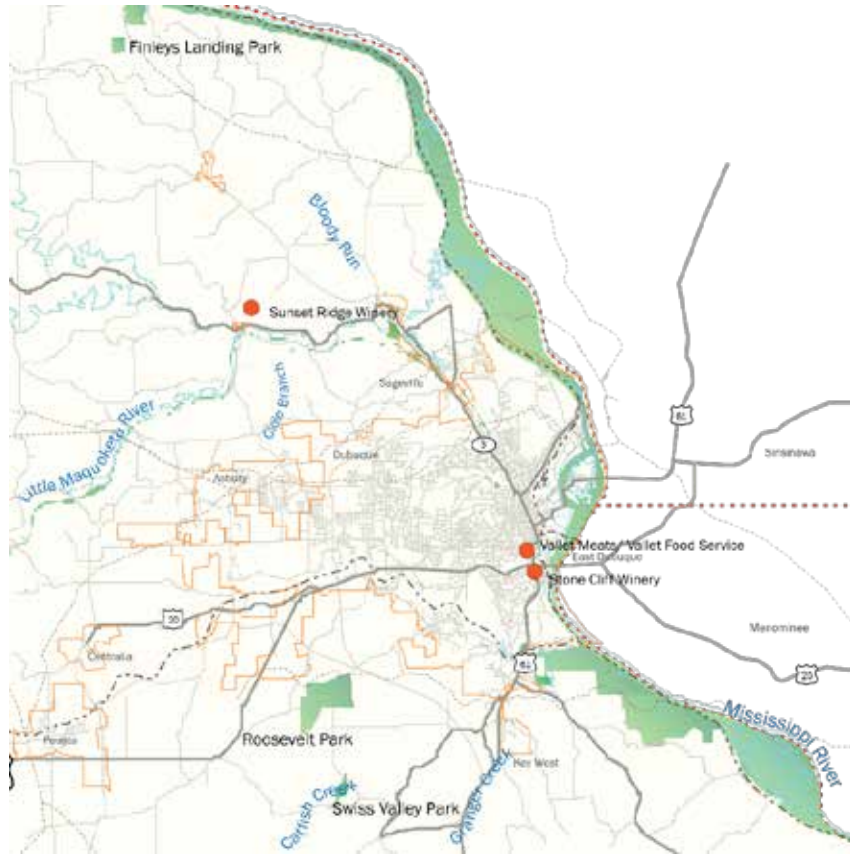
Tools Used

- Mapping:
 - Market Maker
 - GIS
 - Food Research Atlas
- Research Tools:
 - Community Health Needs Assessment
 - Place-based Data
 - Public Input Sessions
- Reports
 - Leopold Center
 - Extension and Outreach





Food Systems Assessment





Prioritization

Key projects ideas: AUT

QUICK WIN:

- Edible Orchard/ Landscape
- Awareness campaign: farm to institution
 - Purchasing power
- Food Access- Educational programming

INTERMEDIATE:

- Food Policy council : land use
- Food Box Node

LONG-TERM

- Incubator Farm
- Entrepreneur Education Center
 - Culinary programming
 - Shared Kitchen space- joint program

• Key project ideas: Coalition

• QUICK WINS:

- Food Access: Food Desert research
- Double Up Bucks Program Support
- Farmers Market Support: awareness
- Education programs
- Farm to School Programming
- City Policy Council- zoning codes

• INTERMEDIATE

- Bee Branch Community Orchard
- Procurement- Food Hub Aggregation and Storage

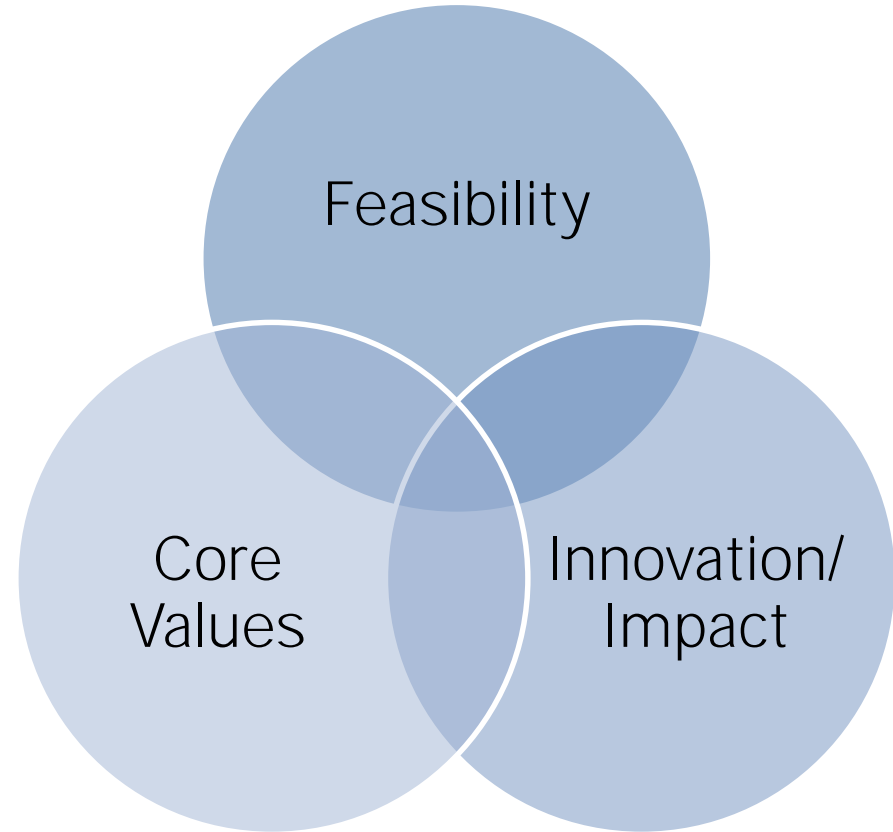
• LONG TERM

- Incubator Program
 - Sinsinawa: Farm
 - Convivium: Shared-Kitchen



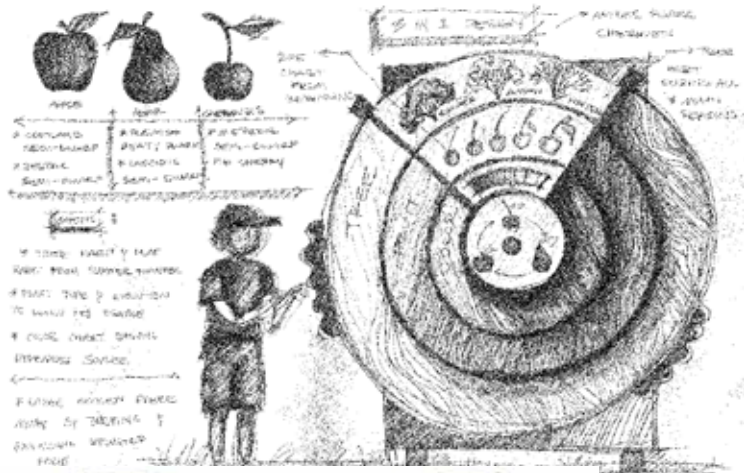
Evaluation + Prioritization

- Key projects ideas: Common Themes
 - Edible Orchard/ Community Garden: Bee Branch
 - Farm to Institution/ Farm to School Programming and Awareness
 - Food Access Outreach: Double Up Bucks/ Awareness programs
 - Education Programs/ Entrepreneurial outreach: connect with existing programs at Mission, Convivium and Hy-Vee
 - Food Policy council – city zoning and advocacy
 - Food Hub Node- Aggregation and Distribution- utilize existing research from ISU Leopold Grant
 - Incubator Program: Shared-Kitchen and Incubator Farm site: Convivium and Sinsinawa
- Outliers:
 - Farmers Market Support and Promotion
 - Food Desert Research



Bee Branch Food Forest

Partners: City of Dubuque, Blue Zones, City of Cedar Rapids Arborist, City of Cedar Rapids Parks Department, Iowa State University Extension and Outreach, Hughes Nursery, Trees Forever



Public Edible Orchard

Partners: Iowa Big, Blue Zones, City of Cedar Rapids Arborist, City of Cedar Rapids Parks Department, Iowa State University Extension and Outreach, Hughes Nursery, Trees Forever



Sinsinawa Mound Collaborative Farm

Partners: Sinsinawa Mound Collaborative Farm, Iowa State University Extension and Outreach, Dubuque Rescue Mission, Tree of Life Farm, State Representatives (Iowa and Wisconsin), SW Badger RC&D

SINSINAWA MOUND
COLLABORATIVE FARM



Agrihood

Partners: Trent Grundmeyer; City of Pleasant Hill, Happe Homes, Community Design Lab, Veterans in Agriculture

Prairie Crossing

Grayslake, Illinois



Project Summary

Prairie Crossing Farm is a 100-acre organic farm outside of Grayslake, Illinois. The main goal is to help beginning farmers start their farm business within the development center and incubator farm program. In addition, there are education and youth development programs, educational tours, and community garden plots. The property offers organic, diversified crops and livestock. The site pulls together native landscape, agriculture and a range of residential units including 359 single-family homes and 36 condominiums. Prairie Crossing has 10 established guiding principles: environmental protection and enhancement, healthy lifestyle, sense of place, sense of community, economic and racial diversity, convenient and efficient transportation, energy conservation, lifelong learning and education, aesthetic design and high-quality construction, and economic viability.



Address:
4190 Route 93, Suite 14
Long Grove, IL 60047
CHIC: 630-7415-7510
customerservice@prairiecrossing.com

Website and Resources:
<http://prairiecrossing.com/>
<http://cityofpleasanthill.com/prairie-crossing-farm/>
<https://www.pchca.com/home.asp>



Public Market + Urban Farm

Partners: Des Moines Social Club, ISU Extension and Outreach, Viva East Bank, City of Des Moines, ISU Value Added Agriculture, Lutheran Services of Iowa, Cherry Glen Learning Farm, Autumns Gardens, Eat Greater Des Moines, Greater Des Moines Partnership, Des Moines Farmers Market, Des Moines Arts, Mike Schmitt, Sandra Grossman, Jack Snell, Joe Villines, Ken Choquette, Greg Van de Berge

Vision of the Public Market: Where food, arts, and science converge

The vision of the Public Market is to create a flexible space that develops a community around local food, art and science. This is viewed as a hub that provides culinary experiences, educational opportunities, entrepreneurial activities, and unique events. This will create a strong sense of community in downtown Des Moines and a place to showcase the best of what Des Moines has to offer and serve as a facilitator and catalyst for business opportunities in the area.

This Public Market will be managed and operated by a new Non-Profit to ensure that the vision, mission and scope are aligned and maintained. The board will most likely be composed of individuals on the core team, and those that are highly influential in the current success of the project. The management structure will include a multi-person staff that will engage in leadership, management, and facilitation of various components of the space; however, many areas within the building are planned to be leased out and thus will be managed and operated within their own private business structure.

Concept Design for Downtown Des Moines Public Market:

Renderings developed by ERS Architecture are aspirational and designed from feedback from project team and residents.



ERS ARCHITECTURE
PUBLIC MARKET AND URBAN FARM PROJECT
DES MOINES, IOWA



ERS ARCHITECTURE
PUBLIC MARKET AND URBAN FARM PROJECT
DES MOINES, IOWA



ERS ARCHITECTURE
PUBLIC MARKET AND URBAN FARM PROJECT
DES MOINES, IOWA



Unity Point Community Orchard

Partners:: Unity Point, Viva East Bank, Lutheran Hospital, City of Des Moines, Capitol Park Neighborhood Association, Easter Seals of Iowa, Church of Hope, Community Housing Initiative, Trees Forever

EDIBLE LANDSCAPE
RAISED BEDS
© 2017 GDL



Join us!
**Groundbreaking Ceremony of the
Edible Landscape Project**

Friday, April 21 at 10 a.m.
SW corner of University and Penn Avenues

**Following a brief ceremony, attendees will be invited to
help with the planting of the fruit trees.*

An **Edible Landscape** is coming to the Iowa Lutheran Hospital Campus! This Edible Landscape will include a dwarf apple tree orchard, raised bed garden and a pollinator habitat all on the hospital grounds.

UnityPoint Health-Des Moines has worked with partners including the Iowa State University Community Design Lab, the City of Des Moines, Viva East Bank and other community groups and members. This project was made possible with the generous support of a "Community Kick Starter Grant" through the Wellmark Foundation. For more information, contact Chris McCarthy at (515)241-0818.

EDIBLE LANDSCAPE
BUTTERFLY HABITAT
© 2017 GDL



Research

Over 30 tactics
assessed and
researched based on
literature reviews,
best practices and
site visits

Iowa State University Community Design Lab
Agricultural Urbanism Toolkit

STRATEGY: The Agricultural Urbanism Toolkit is a **PROCESS** that promotes public interest design through **ENGAGEMENT** with community leaders, leading to a holistic design incorporating community values around food. We use **AGRICULTURAL URBANISM TACTICS** to promote local food system revitalization in communities. The Toolkit has the potential to improve food security, create resilient communities, promote social equity, increase environmental diversity, and build financial sustainability for individuals and communities.



Seed Savers Exchange
Photo taken by ISU Community Design Lab

LP 0007 July 2016

IOWA STATE UNIVERSITY
Extension and Outreach



Training and Certification

Local Food Leader Certification

- 1 Day Workshop
- 6 Online Modules
- Competency Based Certification
 - Foundational Food Systems Competencies
 - Food Systems 101
 - Facilitation
 - Coalition Development
 - Project Management
 - Work Life Balance
 - Assessments
 - Evaluation

Community Food Systems Certification

- 2 Day Intensive Workshop
- Online Modules
- Competency Based Certification
 - CFS skills for practitioners
 - CFS Program and Tools
 - Coalition
 - Public Input and Food Systems Assessment
 - Design Skills
 - Community Impact Assessment



**“Coming together is the beginning.
Keeping together is progress.
Working together...
IS SUCCESS”**

-Henry Ford

Courtney Long:
court7@iastate.edu