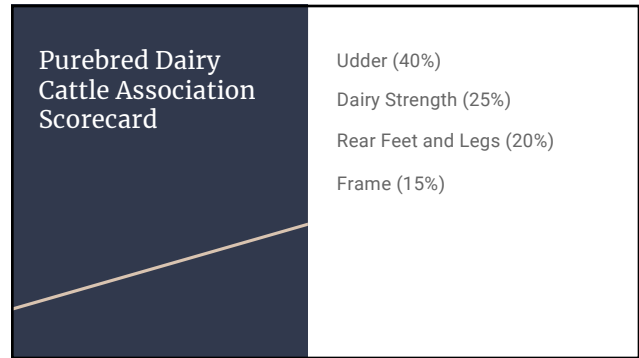




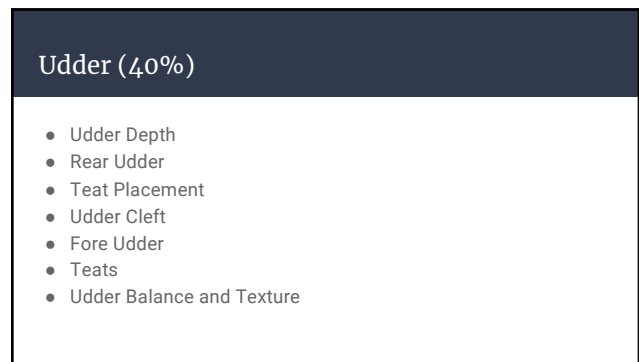
1



2



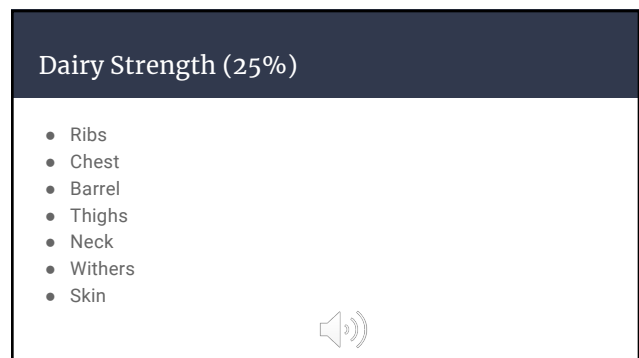
3



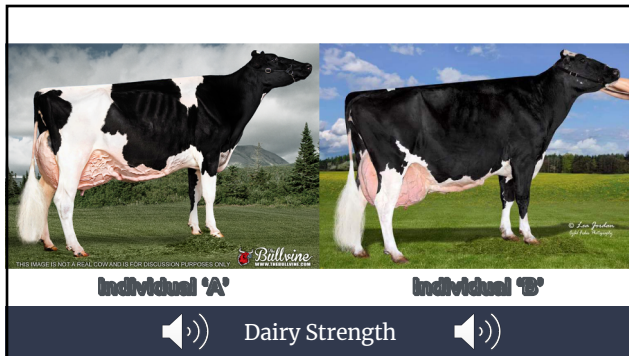
4



5



6



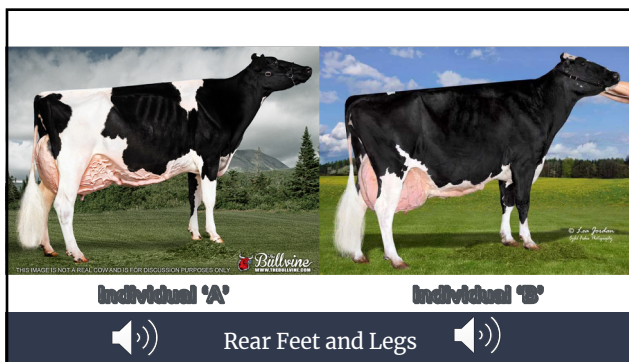
7

### Rear Feet and Legs (20%)

- Movement
- Rear Legs (Side View)
- Rear Legs (Rear View)
- Feet
- Thurl Position
- Hocks
- Bone
- Pasterns



8



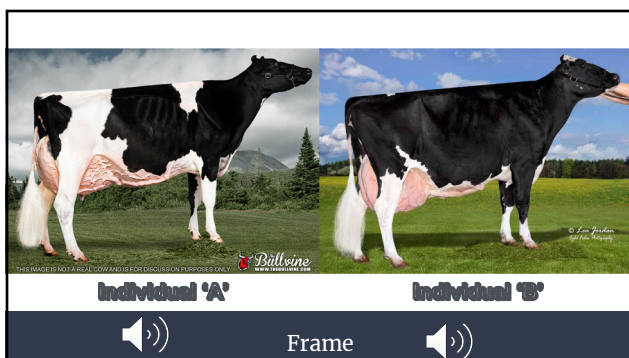
9

### Frame (15%)

- Rump
- Front End
- Back/Loin
- Stature
- Breed Characteristics



10



11

# Thank You!



12