

Butler-Bremer Beef Weigh-in

December 14th 2019

7-9 am

Waverly Sale Barn

NEW instruction for unloading and loading out this year.

COUNTY ONLY: Black /Green Arrows

- Unload at any chute on east side and leave trailer
- Tag and weigh cattle
- Load out on east side

STATE FAIR: Yellow Arrows

If you have 1 or more cattle that are state fair along with county cattle, please do the following:

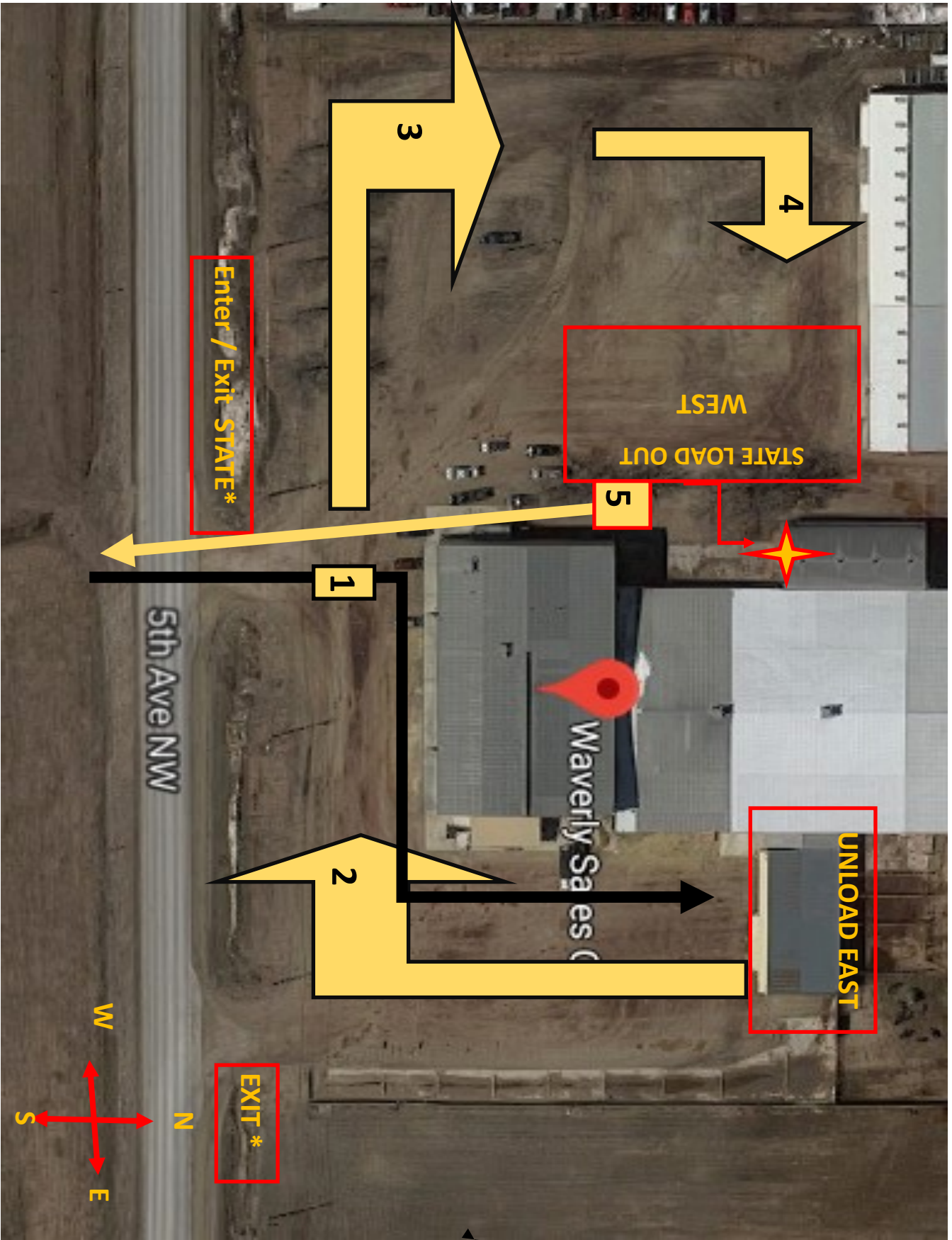
- Unload at any chute on east side
- Move trailer to west side to load out all your cattle
- See map for guidance
- **Parents, please have someone who knows which cattle are state fair or not. Also, have someone be with the cattle at all times.**

Butler County 4-Hers will leave all paper work at their scale. No going back to the office window to drop off.

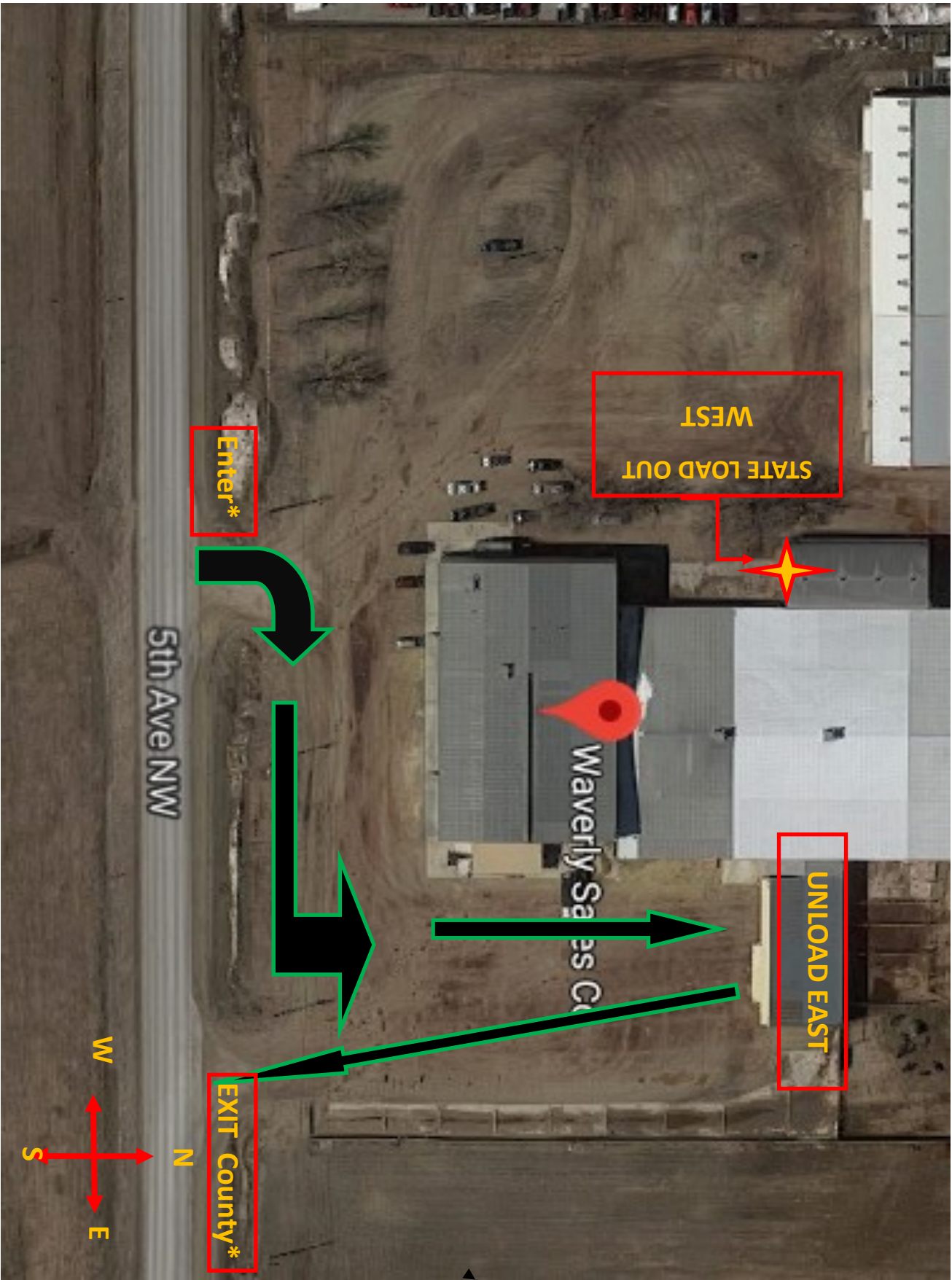
Bremer County 4-Hers will pay their fee (\$10) at the scale BEFORE going to retinal imaging. Failure to pay before will be charged an extra \$5 per animal.

For questions please contact your county office.

****Snow Date is December 21st ****



State Fair Route



County Fair Route