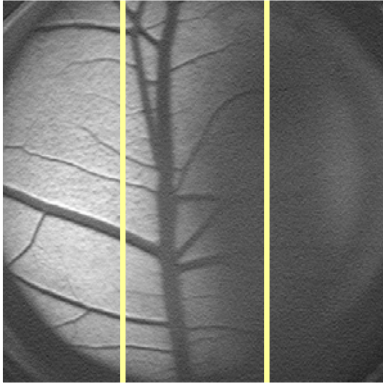
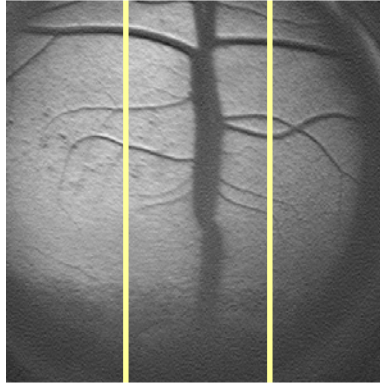


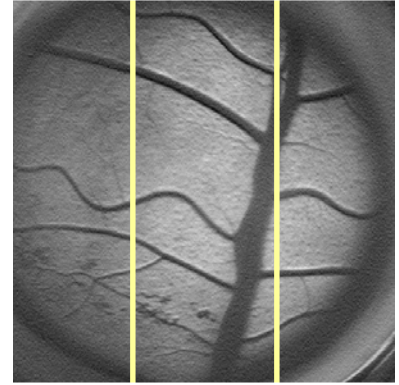
Unacceptable Images



Too Dark – Need to be closer to eye or eye lashes in the way



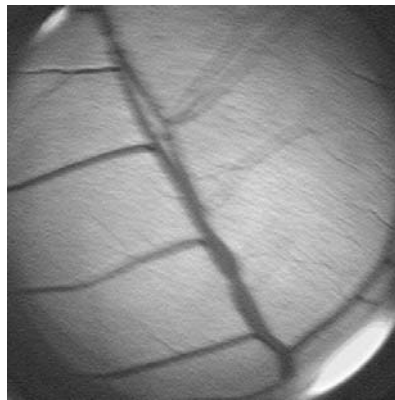
Too Low – Aim/Angle up towards opposite ear to correct this



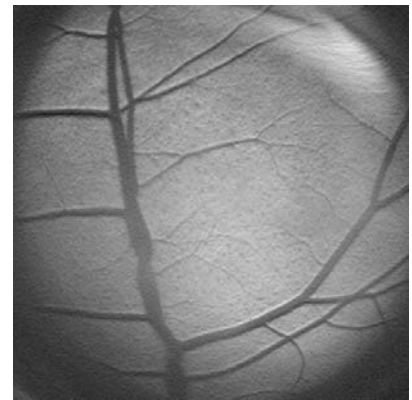
Not Centered – “Twist” camera to make center branch more vertical



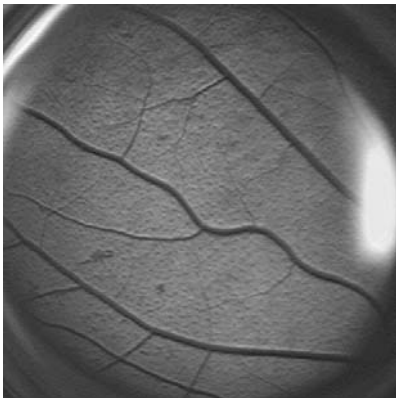
Not Centered – “Twist camera and move to make image vertical and centered



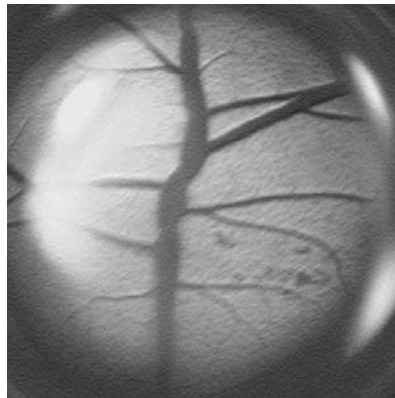
Blurred, Not Vertical – Take a new image that is clearer and more vertical



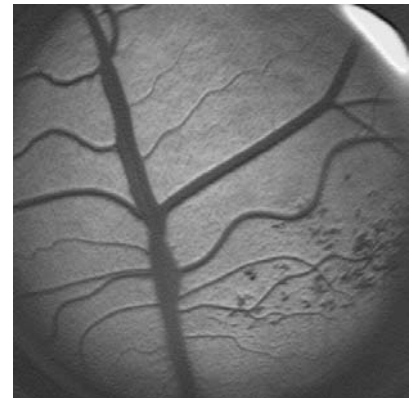
Too Far Left – Difficult to see branching on left side



Too Far Left – Stem cannot be seen at all

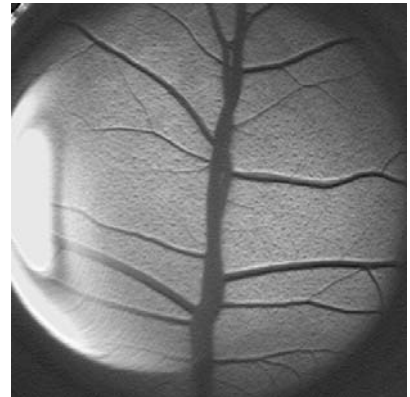
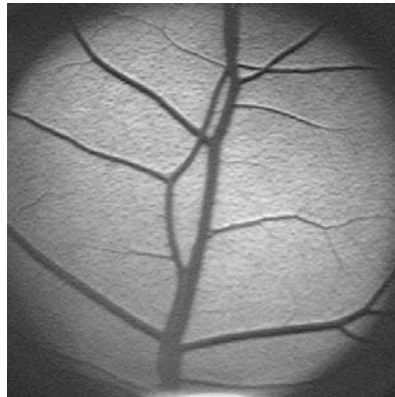
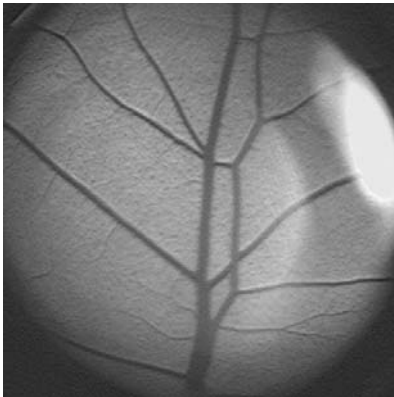
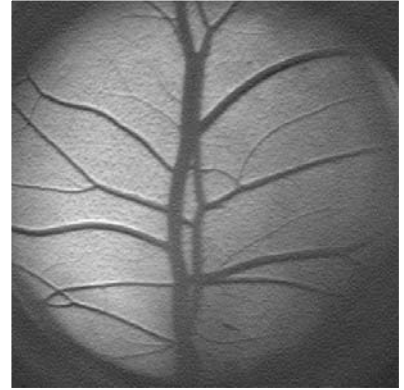


White Glare – Too much glare can interfere with seeing branches;



Not Centered – Stem should be in the middle and vertical

Acceptable Images



White Glare – Does not interfere with seeing most branching

