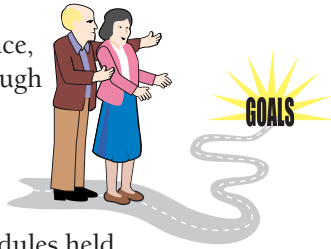


Partnering with Parents Offered Through a Variety of Formats

Get academic excellence, quality and value through convenient formats designed for working adults, including online delivery.

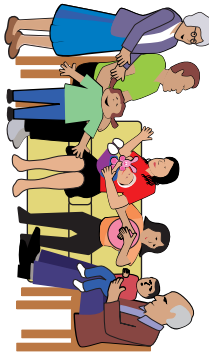


- Full series of 11 modules held face-to-face at various sites throughout Iowa
- Full series offered completely online
- 2-day face-to-face workshops (select modules, not full series)
- Two modules offered online at various times throughout the year

Completion of the full series leads to a Parenting Education Certificate of Completion. You can also earn various CEUs (NCFR CFLE, AAFCS PDUs, social worker hours), Iowa teacher staff development credits, or undergraduate or graduate college credit. For complete information including costs, locations, dates, CEU's, college course credit, and registration go to www.extension.iastate.edu/pwp

Contact:

Kimberly Greder, Assistant Professor
Human Development and Family Studies
Family Life Extension State Specialist
(515) 294-5906
kgreder@iastate.edu



IOWA STATE UNIVERSITY
University Extension
1086 LeBaron Hall
Iowa State University
Ames, IA 50011-1120

Partnering with Parents Walking the Journey Together

An educational outreach academy promoting recommended practices for parent-professional collaboration.



Comprehensive training to strengthen your skills to help parents raise caring, competent, and healthy children

www.extension.iastate.edu/pwp

IOWA STATE UNIVERSITY
University Extension

... and justice for all

The U.S. Department of Agriculture (USDA) prohibits discrimination in all its programs and activities on the basis of race, color, national origin, gender, religion, age, disability, political beliefs, sexual orientation, and marital or family status. (Not all prohibited bases apply to all programs.) Many materials can be made available in alternative formats for ADA clients. To file a complaint of discrimination, write USDA, Office of Civil Rights, Room 326-W, Whitten Building, 14th and Independence Avenue, SW, Washington, DC 20250-9410 or call 202-720-5964. Issued in furtherance of Cooperative Extension work, Acts of May 8 and June 30, 1914, in cooperation with the U.S. Department of Agriculture. Jack M. Payne, director, Cooperative Extension Service, Iowa State University of Science and Technology, Ames, Iowa.
SP175q March 2006

Partnering with Parents— Put research and theory into practice

Are you a professional who works with parents? Do you want to increase your knowledge and sharpen your skills in facilitating learning and support with parents? If yes, Partnering with Parents is the program for you.



- Learn new ideas and techniques for working with parents
- Apply parenting research and theory
- Increase your confidence in facilitating parenting education
- Network with other professionals
- Earn credits for a degree, license renewal, or earn a Parenting Education Certificate of Completion

This training will energize you to use research-based, recommended practices in your work with parents.



Partnering with Parents

Partnering with Parents was the 2005 national winner of the Internet Educational Technology Award from the National Extension Association of Family and Consumer Sciences (NEAFCS).



This interactive training is based on principles of family centered practices and parenting education theory and research. Partnering with Parents nurtures a learning community among family professionals that promotes trust, respect, and collaboration. Iowa State University Extension campus faculty and field staff provide leadership for Partnering with Parents. Faculty from other states serve as guest instructors for the online version of the program.



The full series includes the following modules:

- The Journey of Parenting Education
- Cultural Perspectives on Parenting
- Parenting with Special Challenges
- Exploring Child-rearing Strategies and Assessing Parenting Education Resources
- Parent Learning in Small Groups
- Understanding Child and Parent Development
- Feeding Children and Physical Activities for Families
- Guiding, Nurturing and Motivating Children
- Measuring Program Outcomes
- Financial Stability and Family Well-Being
- Building Support for Yourself and Professionalism



For complete information including costs, locations, dates, CEU's, college course credit, and registration go to www.extension.iastate.edu/pwp



www.extension.iastate.edu/pwp