

Table 2. North central district average soybean yields, 1999-2008. (bu./acre)

Soybean Yields	1999	2000	2001	2002	2003	2004	2005	2006	2007	2008	Avg.
Butler	45	47	45	49	24	50	54	52	52	47	46
Cerro Gordo	41	47	44	45	29	44	53	49	51	45	45
Floyd	43	47	42	48	26	45	54	50	52	44	45
Franklin	44	45	43	48	32	48	52	53	50	45	46
Hancock	43	48	42	50	34	43	54	50	52	50	47
Humboldt	42	46	43	47	34	47	52	53	51	49	46
Kossuth	42	46	41	48	34	43	55	53	52	48	46
Mitchell	48	48	35	50	31	44	54	53	53	45	46
Winnebago	40	47	37	48	36	42	54	53	55	46	46
Worth	42	47	38	51	33	41	53	49	52	45	45
Wright	43	43	40	47	34	49	52	52	51	46	46
North central	43	46	41	48	32	45	54	52	52	47	46

Figure 2. North central district average soybean yields, 1999-2008.

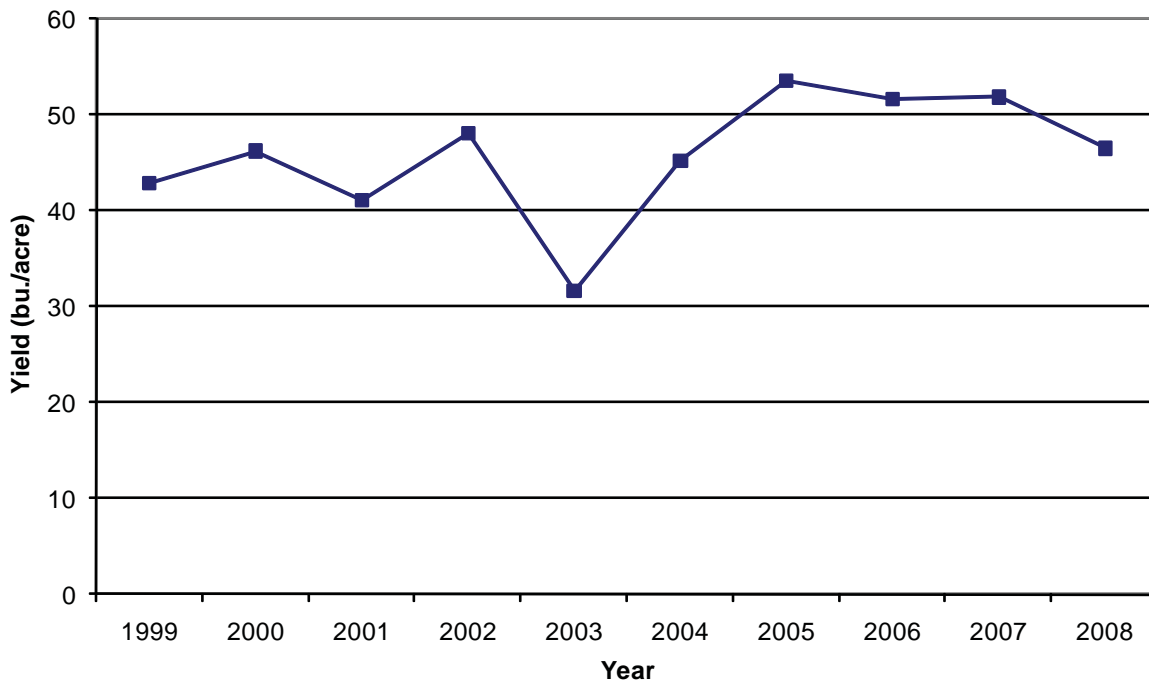


Table 3. Northeast district average soybean yields, 1999-2008. (bu./acre)

Soybean Yields	1999	2000	2001	2002	2003	2004	2005	2006	2007	2008	Avg.
Allamakee	47	47	41	51	32	43	57	49	48	42	46
Black Hawk	51	46	46	51	25	51	55	53	52	50	48
Bremer	52	53	45	53	24	50	59	52	54	45	49
Buchanan	49	46	45	49	26	45	54	53	50	46	46
Chickasaw	47	50	35	50	23	45	58	50	50	45	45
Clayton	50	52	47	55	37	49	59	54	52	50	50
Delaware	53	54	49	54	30	49	56	56	54	46	50
Dubuque	56	53	48	52	34	50	60	56	54	44	51
Fayette	46	50	42	51	25	47	59	53	50	45	47
Howard	47	48	31	49	26	40	55	47	48	44	44
Winneshiek	47	51	35	52	32	43	56	49	50	45	46
Northeast	49	50	42	51	27	47	57	52	51	46	47

Figure 3. Northeast district average soybean yields, 1999-2008.

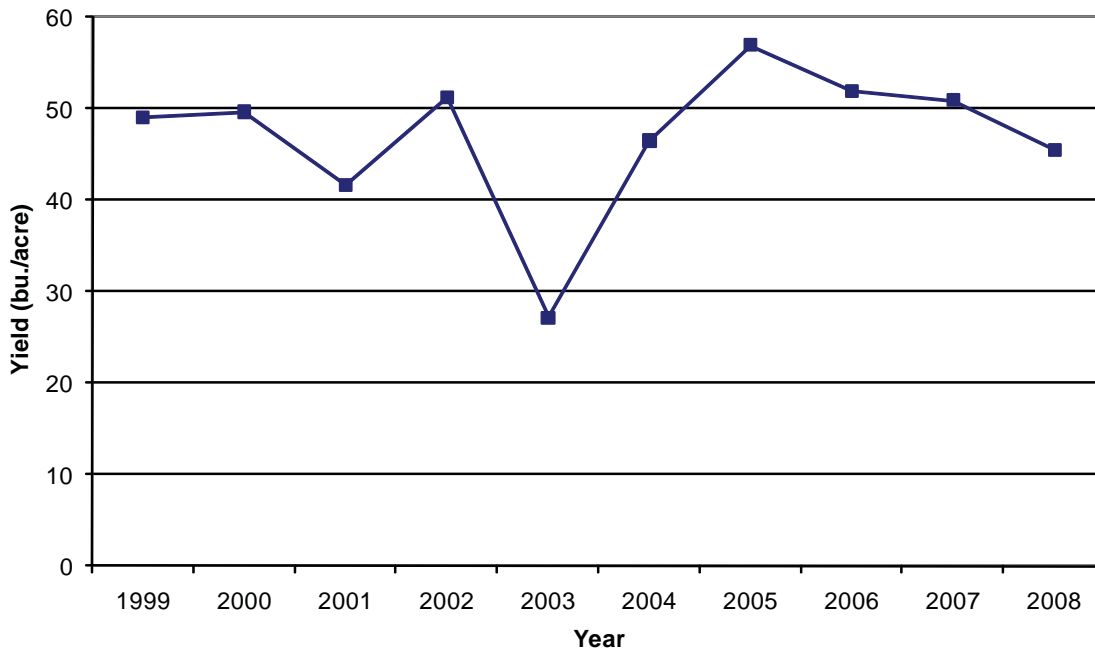


Table 4. West central district average soybean yields, 1999-2008. (bu./acre)

Soybean Yields	1999	2000	2001	2002	2003	2004	2005	2006	2007	2008	Avg.
Audubon	39	40	40	48	31	52	56	51	53	50	46
Calhoun	44	40	44	51	33	46	53	49	52	49	46
Carroll	39	39	46	52	36	51	53	49	50	49	46
Crawford	39	38	48	51	33	49	56	50	50	53	47
Greene	44	39	42	49	37	49	54	48	52	46	46
Guthrie	43	39	38	46	27	47	53	46	49	44	43
Harrison	39	40	43	44	34	46	43	44	50	40	42
Ida	45	35	48	53	37	50	54	46	50	50	47
Monona	41	38	44	42	36	43	43	46	48	44	42
Sac	43	34	48	53	31	48	56	47	54	50	46
Shelby	43	39	48	48	33	49	55	52	53	48	47
Woodbury	42	36	41	47	36	44	49	47	45	45	43
West central	42	38	44	49	34	48	52	48	50	47	45

Figure 4. West central district average soybean yields, 1999-2008.

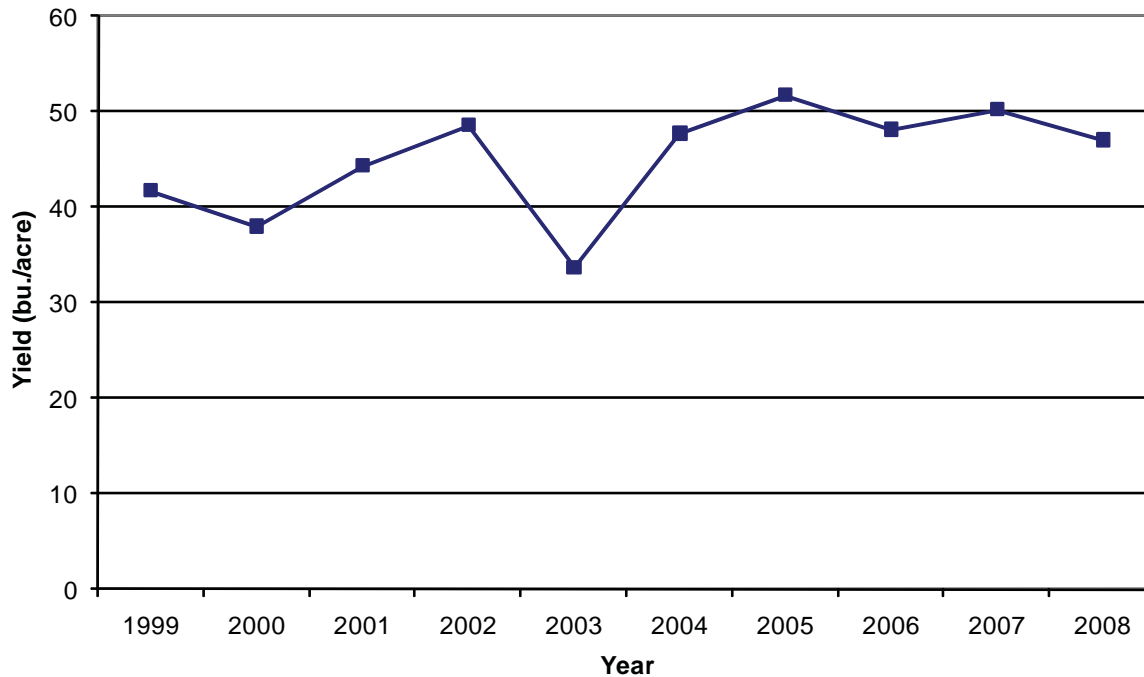


Table 5. Central district average soybean yields, 1999-2008. (bu./acre)

Soybean Yields	1999	2000	2001	2002	2003	2004	2005	2006	2007	2008	Avg.
Boone	43	40	40	48	35	52	57	50	54	44	46
Dallas	44	44	39	44	32	53	59	49	53	47	46
Grundy	52	48	48	54	37	54	60	56	56	53	52
Hamilton	45	40	42	49	34	50	53	49	50	47	46
Hardin	45	44	44	50	34	50	56	57	53	48	48
Jasper	49	46	49	54	32	55	58	53	57	53	51
Marshall	51	46	50	54	32	52	61	57	58	51	51
Polk	45	42	43	47	33	50	52	50	51	44	46
Poweshiek	44	45	49	52	32	53	56	54	58	48	49
Story	45	43	43	46	32	50	59	52	53	46	47
Tama	50	46	50	53	31	53	58	55	55	49	50
Webster	46	46	43	50	35	48	51	49	51	47	47
Central	47	44	45	50	33	52	57	53	54	48	48

Figure 5. Central district average soybean yields, 1999-2008.

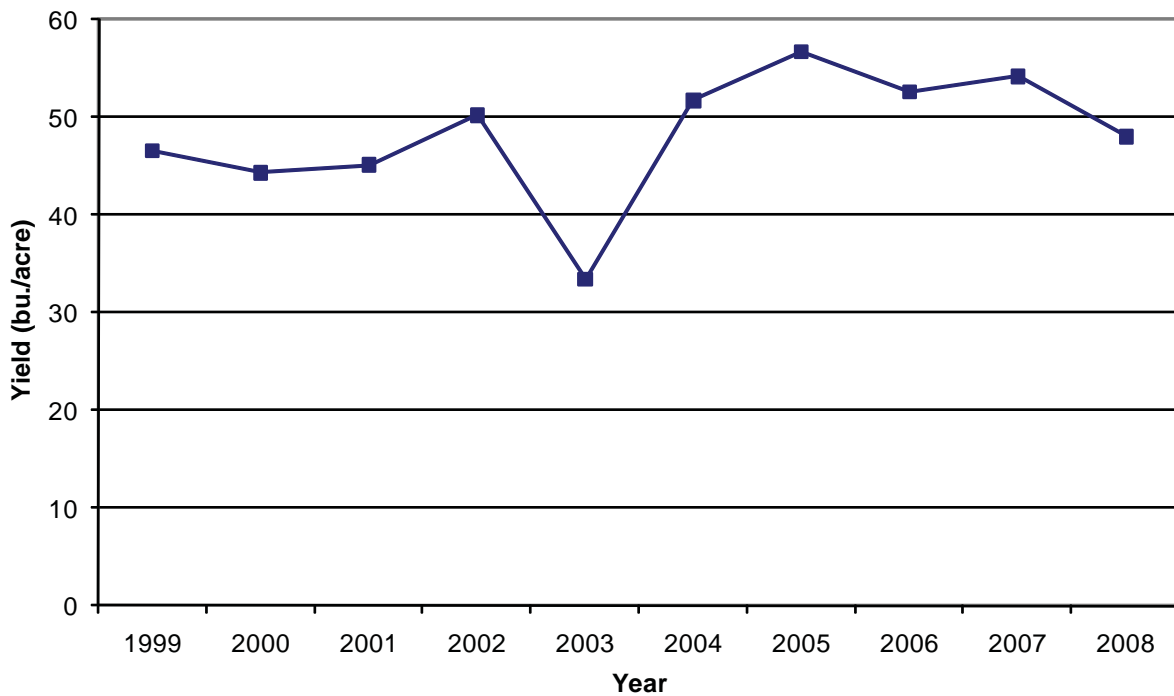


Table 6. East central district average soybean yields, 1999-2008. (bu./acre)

Soybean Yields	1999	2000	2001	2002	2003	2004	2005	2006	2007	2008	Avg.
Benton	47	44	51	50	30	50	54	53	54	51	48
Cedar	51	47	51	51	36	50	48	51	52	48	48
Clinton	53	46	50	50	32	50	43	53	50	47	47
Iowa	43	44	48	51	31	52	49	52	55	47	47
Jackson	51	47	50	49	33	51	46	52	52	46	48
Johnson	43	41	47	49	32	49	46	49	49	46	45
Jones	54	46	50	50	32	47	52	52	52	46	48
Linn	48	44	47	48	29	48	50	49	51	47	46
Muscatine	47	42	46	49	35	52	46	49	50	44	46
Scott	56	49	54	54	38	52	52	55	52	51	51
East central	49	45	49	50	32	50	49	52	52	48	48

Figure 6. East central district average soybean yields, 1999-2008.

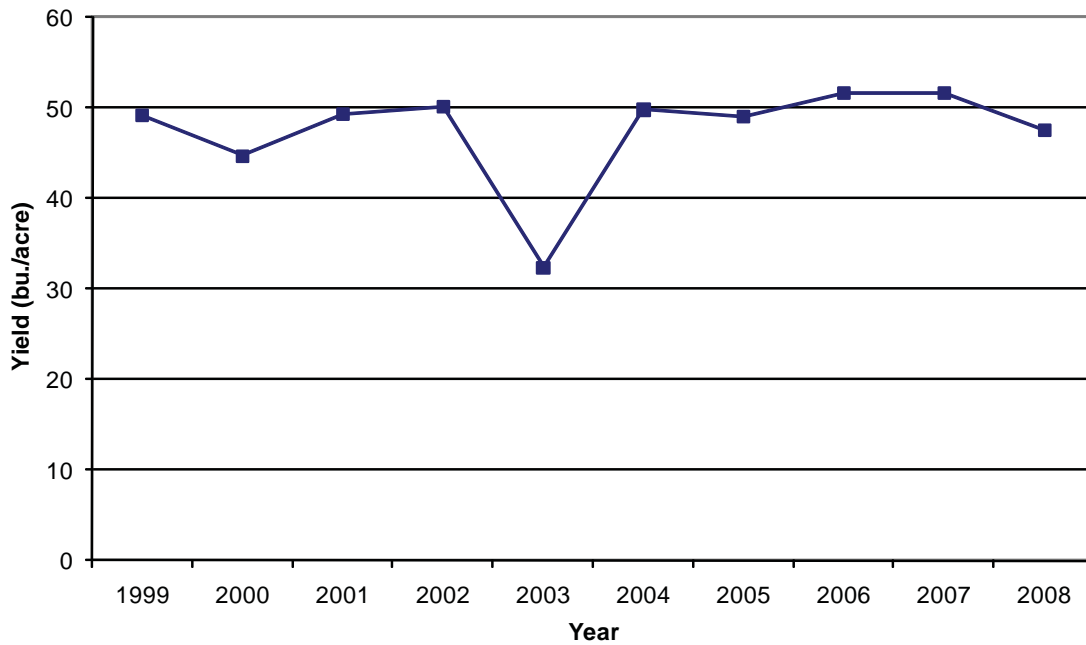


Table 7. Southwest district average soybean yields, 1999-2008. (bu./acre)

Soybean Yields	1999	2000	2001	2002	2003	2004	2005	2006	2007	2008	Avg.
Adair	42	40	39	47	28	52	49	51	53	45	45
Adams	39	42	41	44	28	51	51	45	52	39	43
Cass	42	41	44	42	30	53	53	52	50	46	45
Fremont	42	42	48	38	35	51	49	48	51	41	44
Mills	40	40	44	39	29	50	50	51	51	41	43
Montgomery	40	42	44	46	30	52	49	51	51	38	44
Page	41	43	46	37	30	50	51	48	52	37	43
Pottawattamie	44	43	46	45	30	51	55	53	52	41	46
Taylor	35	40	40	41	29	48	54	43	43	34	41
Southwest	41	42	44	42	30	51	52	50	51	41	44

Figure 7. Southwest district average soybean yields, 1999-2008.

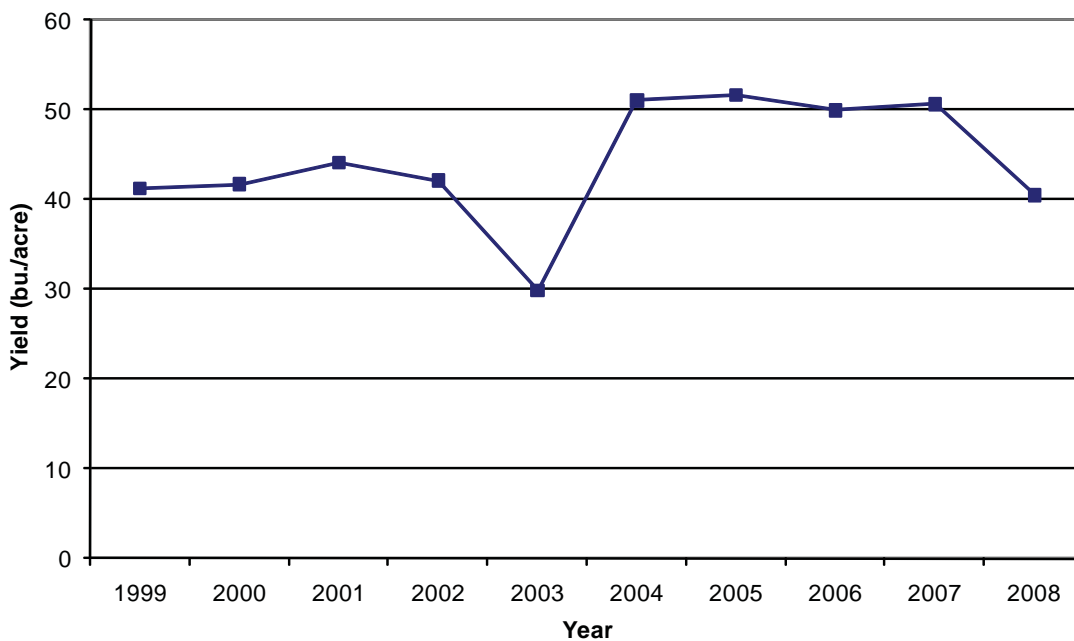


Table 8. South central district average soybean yields, 1999-2008. (bu./acre)

Soybean Yields	1999	2000	2001	2002	2003	2004	2005	2006	2007	2008	Avg.
Appanoose	35	42	41	40	31	52	45	42	45	31	41
Clarke	38	39	38	38	26	45	49	43	46	26	39
Decatur	35	40	37	41	26	50	52	46	48	31	41
Lucas	38	39	35	40	29	48	48	42	42	28	39
Madison	42	41	42	48	28	50	50	50	53	42	44
Marion	45	46	45	47	30	50	52	47	51	45	46
Monroe	35	39	40	41	24	48	49	41	49	33	40
Ringgold	36	39	39	42	27	47	53	42	46	26	40
Union	41	40	42	45	26	48	52	46	51	38	43
Warren	41	43	45	46	27	52	51	50	55	41	45
Wayne	35	39	40	39	27	49	53	40	52	30	40
South central	39	41	41	43	28	49	51	45	50	35	42

Figure 8. South central district average soybean yields, 1999-2008.

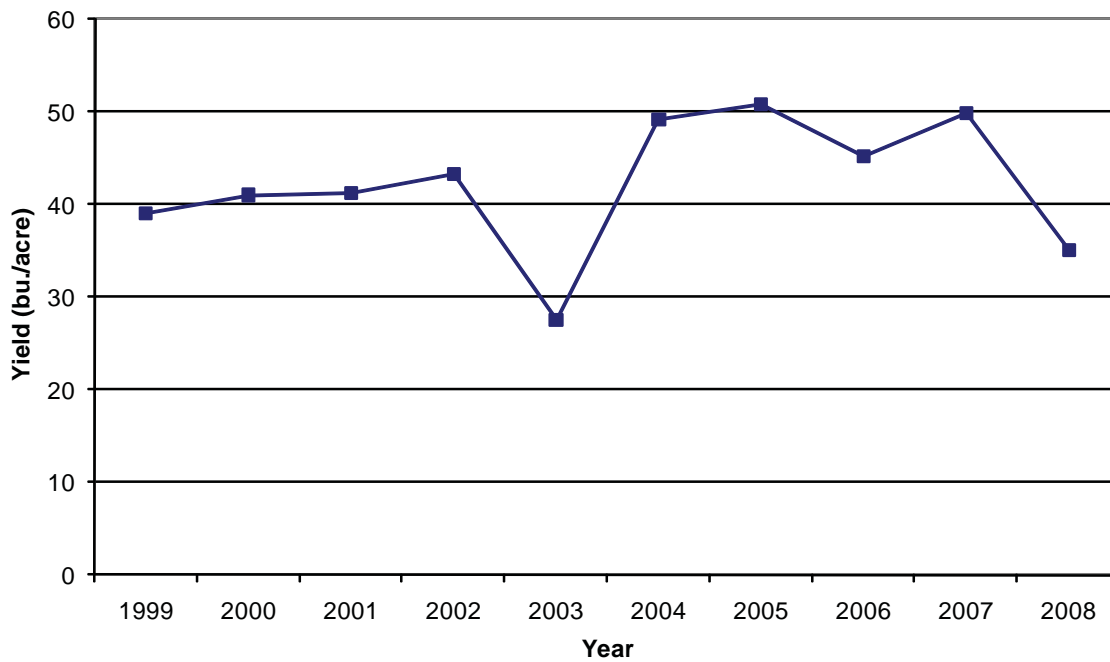


Table 9. Southeast district average soybean yields, 1999-2008. (bu./acre)

Soybean Yields	1999	2000	2001	2002	2003	2004	2005	2006	2007	2008	Avg.
Davis	34	42	39	39	33	53	42	45	48	36	41
Des Moines	42	41	44	47	36	56	52	48	51	47	46
Henry	40	41	43	47	36	54	52	49	50	48	46
Jefferson	33	38	41	37	32	54	53	47	46	42	42
Keokuk	40	43	43	45	32	53	50	46	51	47	45
Lee	38	40	44	42	36	55	47	45	48	42	44
Louisa	45	38	43	47	30	50	47	46	48	47	44
Mahaska	46	44	44	48	38	54	54	50	56	47	48
Van Buren	31	39	39	36	34	53	47	45	47	41	41
Wapello	37	40	40	38	30	54	49	47	46	42	42
Washington	45	41	45	49	33	53	51	49	50	50	47
Southeast	40	41	43	44	34	53	50	47	50	45	45

Figure 9. Southeast district average soybean yields, 1999-2008.

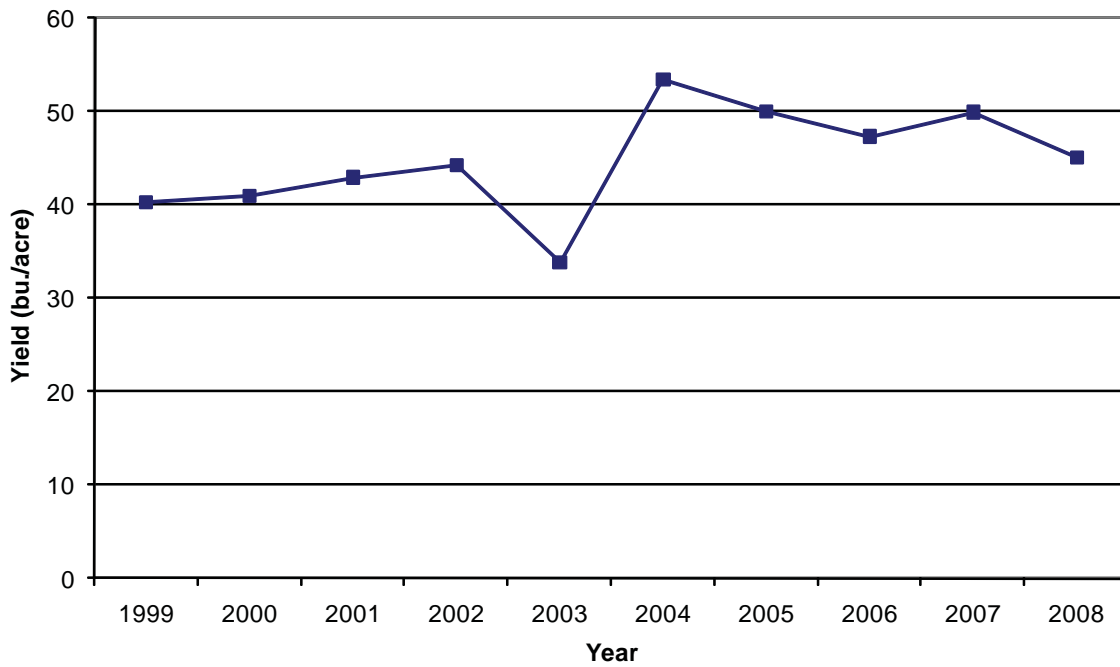
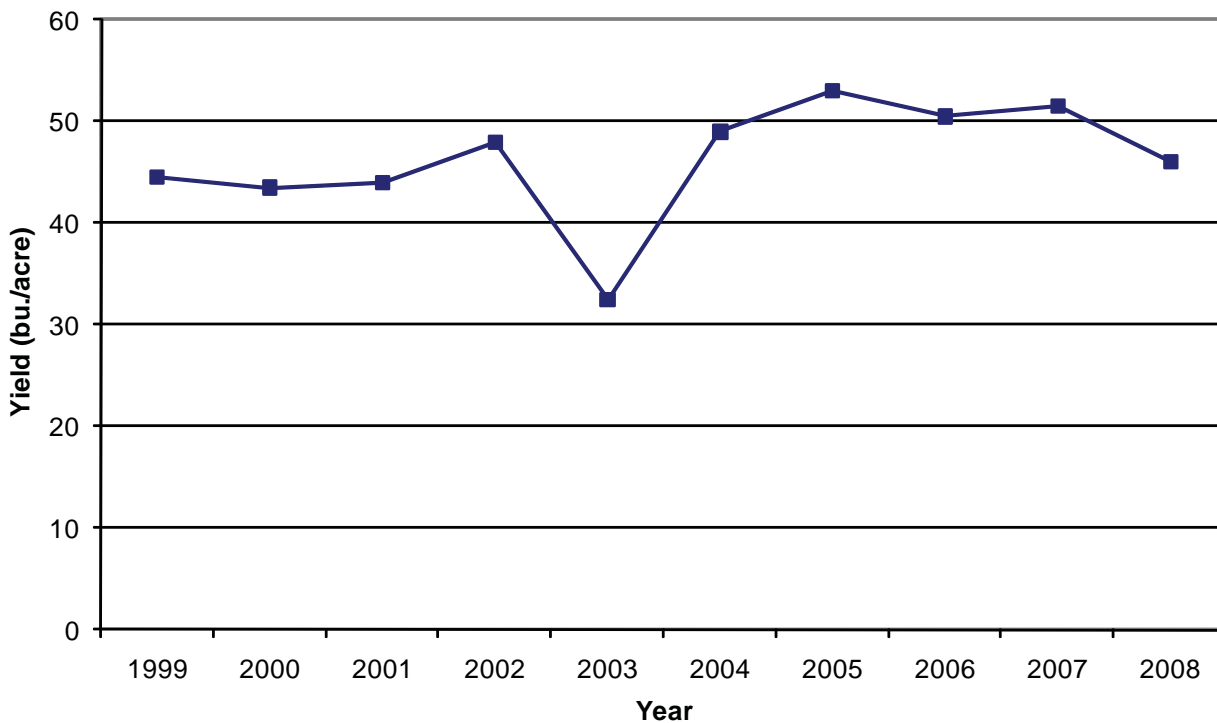


Table 10. District average soybean yields, 1999-2008. (bu./acre)

Soybean Yields	1999	2000	2001	2002	2003	2004	2005	2006	2007	2008	Avg.
Northwest	47	45	45	49	37	49	54	52	52	50	48
North central	43	46	41	48	32	45	54	52	52	47	46
Northeast	49	50	42	51	27	47	57	52	51	46	47
West central	42	38	44	49	34	48	52	48	50	47	45
Central	47	44	45	50	33	52	57	53	54	48	48
East central	49	45	49	50	32	50	49	52	52	48	48
Southwest	41	42	44	42	30	51	52	50	51	41	44
South central	39	41	41	43	28	49	51	45	50	35	42
Southeast	40	41	43	44	34	53	50	47	50	45	45
State Total	45	44	44	48	33	49	53	51	52	46	46

Figure 10. State average soybean yields, 1999-2008.



... and justice for all

The U.S. Department of Agriculture (USDA) prohibits discrimination in all its programs and activities on the basis of race, color, national origin, gender, religion, age, disability, political beliefs, sexual orientation, and marital or family status. (Not all prohibited bases apply to all programs.) Many materials can be made available in alternative formats for ADA clients. To file a complaint of discrimination, write USDA, Office of Civil Rights, Room 326-W, Whitten Building, 14th and Independence Avenue, SW, Washington, DC 20250-9410 or call 202-720-5964.

Issued in furtherance of Cooperative Extension work, Acts of May 8 and June 30, 1914, in cooperation with the U.S. Department of Agriculture. Jack M. Payne, director, Cooperative Extension Service, Iowa State University of Science and Technology, Ames, Iowa.