

Wine-Grower-News #47 *June 13, 2008*

Midwest Grape & Wine Industry Institute: <http://www.extension.iastate.edu/Wine>

Information in this issue includes:

“Altacor 35WDG” New Dupont Insecticide for Grapes

Check out IWGA’s “NEW” Calendar Feature

Put it on the Floor and it will Run out of the Door

How Wet Is It?

Save the Date – IA Wine Growers Assn. Annual Conference– March 20 & 21, 2009

Mark Your Calendars – Eastern Iowa Wine Festival – July 12th

Tuesday, June 17th SE Iowa Vineyard Management Workshop

IFVGA Summer Field Day – Monday, June 30, 2008

2008 ISU Research & Demonstration Farms Field Day Schedule

Ohio Will Introduce the “Ohio Quality Wine” (OQW) Seal on June 24th

Pictures from the Week

Quote of the Week

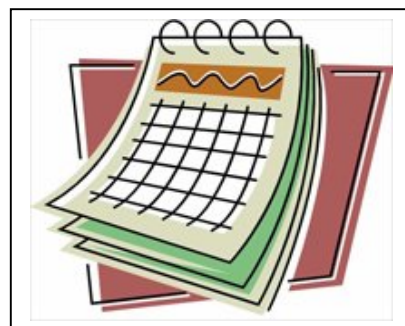
Neeto-Keeno WWW Stuff

“Altacor 35WDG” New Dupont Insecticide for Grapes

Dupont has received a EPA registration to market “Altacor” a completely new type of insecticide. Altacor is labeled on several types of fruit including grapes. The new active ingredient, Rynaxypyr is a member of a new class of insecticides called anthranilic diamides. Rynaxypyr has a low use rate of 2-4.5 oz/acre, has a very low mammalian toxicity with a low environmental impact. Climbing Cutworms and Grape Berry Moth are the two primary insects on the label that Iowa growers would use this for. Altacor has a 4 hour Re-entry Interval and 14 day Pre-harvest Interval. The label recommends not using an adjuvant and to not use less than 100 gallons of water per acre for ground applications. Dupont’s technical information on this insecticide says that it quickly moves into the grape leaves where it becomes rain fast. Insects chewing on these leaves will quickly become paralyzed and quit feeding within minutes. This general use insecticide will be marketed in a 16 oz. container as a 35% water dispersible granule (WDG). My local ag-chemical sales rep tells me that supplies are short and it will currently retail for approximately \$12.50 per oz. The label states to store at temperatures above 32°F. Labels, MSDS sheets and more technical information can be found here: http://www2.dupont.com/Production_Agriculture/en_US/products_services/insecticides/Altacor_insecticide.html

Check out the “New” Calendar feature on the Iowa Wine Growers Home page here:

<http://www.iowawinegrowers.org>



Members can register and set up an account to post their own events by going to the lower left hand corner of the homepage and select “*Create one*”.

Put it on the Floor and it will Run out of the Door

I stopped by the HyVee Wine & Spirits store just east of Valley Junction in West Des Moines this Friday. I was impressed to see five Iowa winery floor displays located prominently at the two entrances to the store. “*Put it on the floor and it will run out of the door*” is an old saying in the wine retail business that emphasizes the use of floor displays to sell product. Here are the five Iowa wine displays that were in this HyVee Wine & Spirits store:

- Madison County Winery (L)
<http://www.madisoncountywinery.com/>
- Cedar Ridge Winery & Distillery (R)
<http://www.crwine.com/>



Southern Hills Winery
<http://www.shwinery.com/>



Summersset Winery
<http://www.summerssetwine.com/>



Jasper Winery
<http://www.jasperwinery.com/>

How Wet Is It?

I have received several calls about grape plants showing symptoms of stunted growth with pale yellow-green leaves. Yep, grapes don't like wet feet. These stunted grapes need drier aerated soil. You can check out Iowa's rainfall status here:

Mesonet Iowa map of normal January 1 through present rainfall accumulations:

<http://mesonet.agron.iastate.edu/data/summary/year/normals.png>

Mesonet Iowa map of current January 1 through present precipitation totals:

<http://mesonet.agron.iastate.edu/data/summary/year/stage4obs.png>

Mesonet Iowa map of normal January 1 through present rainfall departures from normal:

<http://mesonet.agron.iastate.edu/data/summary/year/diff.png>

Mesonet graphical charts of accumulated vs. normal precipitation and growing degree days (GDD's) for different cities around Iowa: <http://mesonet.agron.iastate.edu/plotting/gs/fe.phtml>

Check the water level of your local river here: <http://www.rivergauges.com>

Save the Date – IA Wine Growers Assn. Annual Conference– March 20 & 21, 2009

The Iowa Wine Growers Association Annual Conference has now been scheduled for Friday and Saturday, March 20 & 21, 2009. This 2009 event will be held at the Airport Holiday Inn in Des Moines: <http://www.holidayinn.com/h/d/hi/1/en/hotel/dsmap?requestid=235953>

This comes after months of work by the Annual Conference Committee looking at all of our options. Since our founding in 2000 the Annual Conference has moved from the Marshalltown Best Western, then to the Hotel Fort Des Moines, then to the Des Moines Area Community College (DMACC) in Ankeny. DMACC was an excellent host and was an excellent location. Unfortunately, our need for more banquet space and vendor space required that we move again. The Airport Holiday is just east of the Des Moines Airport and just north of the south Interstate bypass. This will provide easy access for our speakers, vendors and members. The later date should give us a higher probability of better weather.

Mark Your Calendars – Eastern Iowa Wine Festival – July 12th

What: Eastern Iowa Wine Festival

When: 10 AM to 8 PM, July 12th, 2008

Where: Black Horse Inn at Sherrill, Iowa (approximately 10 miles NE of Dubuque
<http://www.blackhorse-inn.com/>

Cost: \$12 in advance, \$15 at the door. For those that would like to purchase tickets in advance, tickets are available at the Hy-Vee on Asbury in Dubuque, IA and through any of the Wineries on the Iowa Wine Trail <http://www.iowawinetrail.com/>
Tickets by phone available at 563-552-1800.

Event & Ticket Info: <http://www.easterniowawinefestival.com>

Events at the festival include: Music Performance by guitarist Ray Rose, the Guttenberg Polka Band, and Betty and the Headlights
Amateur Wine Making Competition and Award Ceremony
Art and Artisan Products on display and available for sale

Tuesday, June 17th SE Iowa Vineyard Management Workshop

What: Southeast Iowa Vineyard Management Workshop

When: 6-9 PM, Tuesday, June 17, 2008

Where: Whispering Pines Winery, Keosauqua, IA: <http://www.whisperingpineswinery.biz/>

Agenda: 5:30 PM Registration & Refreshments

6:00 PM Vineyard Pesticide Record Keeping Requirements, The Worker Protection Standard requirements for vineyard operators and Pesticide Drift Complaints - Robert Mikota, Field Inspector – Iowa Department of Agriculture & Land Stewardship: <http://www.iowaagriculture.gov/>

6:45 PM Air Blast Sprayer and Fungicide Application Tips in the Vineyard
Wayne Peterson, Midwest Grower Supply
<http://midwestgrowersupply.com/>

7:30 PM Break

7:45 PM Canopy Management in the Vineyard - Mike White,

9:00 PM Adjourn

Registration: Please call or e-mail the Van Buren County ISU Extension office prior to noon, Monday, June 16th at smclain@iastate.edu or call 319-293-3039

Cost: \$15 per person, pay at the door.

IFVGA Summer Field Day – Monday, June 30, 2008

What: Iowa Fruit & Vegetable Growers Association Summer Field Day

When: 9:30 AM to 4 PM, Monday, June 30, 2008

Where: Dick Martin Farm, 225 South Ringgold St. Boone, Iowa.

- vegetable crops & self made equipment

Scott & Julie Wilber Farm, 2407 Marshall St. Boone, Iowa.

- vegetable & melon crops

- first year as full-time on-the-farm grower

- first year CSA business

ISU Horticulture Station, Gilbert, Iowa.

- high tunnel peppers, beans, brambles

- high tunnel pest management

- apple rootstock trial, apple IPM strategies

- ISU plant & insect diagnostic clinic

- strawberry observations

- fruit & vegetable insect problems

Sponsor: Iowa Fruit & Vegetable Growers Association:

<http://www.iafruitvegetablegrowers.org/>

Cost: \$20 each, includes lunch.

Pre-registration required by June 27, Contact IFVGA, c/o Dorothy Lewis, PO Box 1202, Ames, IA 50014-1202, ph: 515-232-5801 or e-mail: ifvga@q.com

2008 ISU Research & Demonstration Farms Field Day Schedule

Iowa State University has 14 agriculture research and demonstration farms located throughout the state. These farms are located at these 14 different locations to represent the many different soils, geography, climate, and different ag-enterprises around the state. Further information about our ISU Research farms and the Field Days Brochure can be found here found here:

<http://www.ag.iastate.edu/farms/>

Field Days Schedule:

Location	Research Farm	Subject	Date
Nashua	NERF	Crops	June 19 @ 1:30 pm
Sutherland	NWRF	Crops	June 25 @ 9:00 am
Crawfordsville	SERF	Crops	June 26 @ 12:00 pm
Lewis	Armstrong	Crops	June 27 @ 9:30 am
Kanawha	NIRF	Crops	July 1 @ 9:30 am
Lewis	Armstrong	High Tunnel	July 15 @ 6:30 pm
Doon	NWRF	Crops	August 4 @ 6:00 pm
Greenfield	Neely-Kinyon	Crops, Grazing	August 20 @ 4:00 pm
Sutherland	NWRF	Crops	September 2 @ 6:00 pm
Kanawha	NIRF	Crops	September 3 @ 9:30 am
Nashua	NERF	Crops	September 4 @ 1:30 pm
Crawfordville	SERF	Crops	September 10 @ 1:00 pm
Castana	WRF	Livestock, Forages	TBA
Chariton	McNay	Crops, Livestock	TBA
Newell	Allee	50th Anniversary	September 16 @ 9:30 am
Fruitland	MIRF	Sugar, Beets	September

2008 Demonstration Home Garden Field Days

Location	Research Farm	Date
Rock Rapids	Lyon Co Fair Grounds	July 15 @ 6:00 pm
Chariton	McNay	July 17 @ 6:00 pm
Sutherland	NWRF	July 26 @ 9:00 am
Nashua	NERF	August 2 @ 4:00 pm
Fruitland	Muscatine Island Research Farm	August 4 @ 6:30 pm
Ames	Horticulture Station	August 5 @ 6:30 pm
Lewis	Armstrong	August 6 @ 6:30 pm
Kanawha	NIRF	August 7 @ 6:30 pm

Note: Beginning July 1, 2008, Iowa law mandates “NO SMOKING” on publicly owned or controlled property. This law applies to ISU Research and Demonstration Farms for all employees, contractors, and visitors. Signs will be posted.

Ohio Will Introduce the “Ohio Quality Wine” (OQW) Seal on June 24th

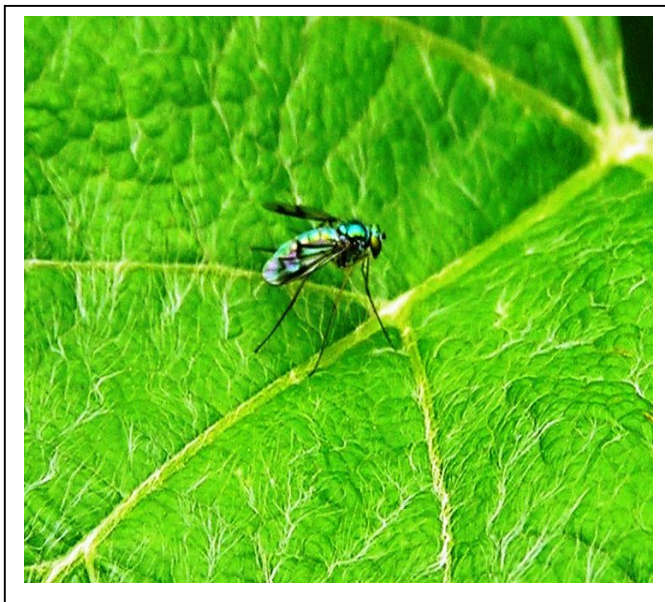
Donnie Winchell, director of the Ohio Wine Producers Association has announced that the Ohio Quality Wine (OQW) seal will be introduced to the public on June 24th. This quality program has been in the making for over 5 years. The intent is to promote Ohio’s premier quality wines.

Relatively few of Ohio’s wines will qualify for the OQW seal. In addition to the estate-grown and varietal limitations, candidates for the seal must be pre-qualified by winning a medal in a recognized competition. Then, they must be submitted to a qualified panel of tasters, which will rate their sensory characteristics. Finally, and for an additional \$50 fee, each wine will undergo laboratory analysis by enologists at Ohio State's lab. Only then will the winery earn the right to use the OQW seal in advertisements, point-of-sale materials and other promotions.

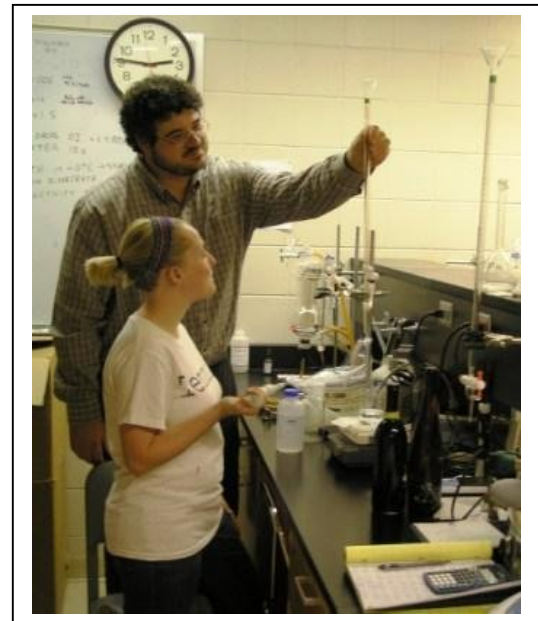
Ohio to Unveil Wine Quality Seal, 6-12-08, Wines & Vines Magazine:

<http://www.winesandvines.com/template.cfm?section=news&content=56278#>

Pictures from the Week



Long Legged Fly on Concord grape. These are beneficial insects that feed on other insects and mites.



Dr Sebastian Donner, ISU Wine Lab Manager with newly hired lab technician Ellen Larson.

Quote of the Week

“Wine consumption in the United States has risen each year for the past 14 years and the fastest growing segment of drinkers today is the "Millennial Generation" -- those who started reaching adulthood around the year 2000.”

--- Mary Milliken, Youthful Exuberance Lifts U.S. Wine Industry, Reuters News Service, 6-13-08:

<http://in.reuters.com/article/lifestyleMolt/idINN1236250520080613>

Neeto-Keeno WWW Stuff

1. A friend of mine turned me on to this small winery in Florida where you make your own wine:
<http://www.makentakewines.com/>
2. Are you advertising on YouTube? Tassel Ridge Winery is. Check these out:
<http://www.youtube.com/watch?v=Xcyya8oyCfg>
<http://www.youtube.com/watch?v=OHCbRYLHQa4>
3. *Can I Grow Grapes*, ISU Acreage Living Newsletter by Dr. Paul Domoto:
<http://www.extension.iastate.edu/acreage/AL2008/aljune08.html>

Post & View Classified Ads Here: <http://iowawinegrowers.org>

Past issues archived as html: <http://www.extension.iastate.edu/Wine/Resources/winegrowernews.htm>

Past issues archived as pdf: <http://www.extension.iastate.edu/ag/newsletters/winegrowers.html>

**Total Circulation of 950+ recipients in CA, GA, IA, IN, FL, IL, KS, MN, MO, ND, NE,
NY, OR, PA, SD, VT, WA DC, and WI**

Please reply with the word "unsubscribe" in the Subject Line if you wish to no longer receive this newsletter.

Michael L. White,
ISU Extension Viticulture Specialist
909 East 2nd St. Suite E, Indianola, IA 50125-2892
ph: 515-961-6237, fax: 6017 or mlwhite@iastate.edu

The U.S. Department of Agriculture (USDA) prohibits discrimination in all its programs and activities on the basis of race, color, national origin, gender, religion, age, disability, political beliefs, sexual orientation, and marital or family status. (Not all prohibited bases apply to all programs.) Many materials can be made available in alternative formats for ADA clients. To file a complaint of discrimination, write USDA, Office of Civil Rights, Room 326-W, Whitten Building, 14th and Independence Avenue, SW, Washington, DC 20250-9410 or call 202-720-5964.