

Midwest Grape & Wine Industry Institute: <http://www.extension.iastate.edu/Wine>

Information in this issue includes:

***Dr. Paul Tabor, Tabor Home Vineyards & Winery Speaks at Iowa State University
Tell Me Again – Where at ISU is that Wine Lab Located?***

Grape Production & Distribution in Western Iowa - 1857 to 1921

South Dakota Wine Industry Booming

Pesticide Supplies Remain Tight

MGGA Annual Picnic – Save the Date

Direct To Consumer Wine Symposium & Trade Show – May 1 & 2 in Napa Valley

Wine Institute Sets Up “Free” Shipping Compliance Portal for Wineries

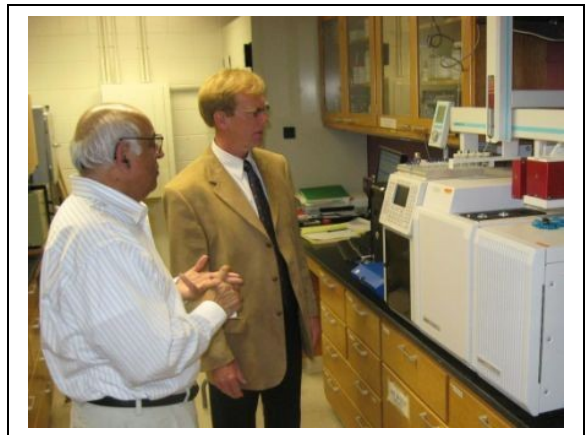
Quote of the Week

Neeto-Keeno WWW Stuff

Dr. Paul Tabor, Tabor Home Vineyards & Winery Speaks at Iowa State University

Paul Tabor of Tabor Home Vineyards & Winery at Baldwin, Iowa was invited to speak at Iowa State University on Wednesday, April 9th. “*Wine-Making Technology for the Upper Midwest & Its Application to the Iowa Wine Industry*” was the title of his seminar. The seminar was held in LeBaron Hall and was well attended. Paul was asked quite a few questions about different wine styles and about the different cultivars we are using in Iowa.

Dr. Murli Dharmadhikari (L), Director of the Midwest Grape & Wine Industry Institute shows Dr. Paul Tabor (R) the GC (Gas Chromatography) and MS (Mass Spectrometry) instrument during his visit to ISU. The new instrument is used for chemical analysis of grape and wine samples in the wine lab.



The photo was submitted by Sebastian Donner, Wine Lab Manager. You can visit Paul Tabor’s winery here: <http://www.taborwines.com/>

Tell Me Again – Where at ISU is that Wine Lab Located?

It is a common question, “where on the ISU campus is that wine lab located? I completely understand the question. It is very easy to get lost amongst the 200+ buildings on the 1,984 acre Iowa State University campus. We have now placed a map of the Midwest Grape & Wine Industry

Institute (MGWII) wine lab under the “**Contact Us**” tab of our homepage. The MGWII Wine Lab is located on the second floor of the Food Sciences Building, Room #2523. You can check it out here: <http://www.extension.iastate.edu/Wine/>

Grape Production & Distribution in Western Iowa – 1857 to 1921

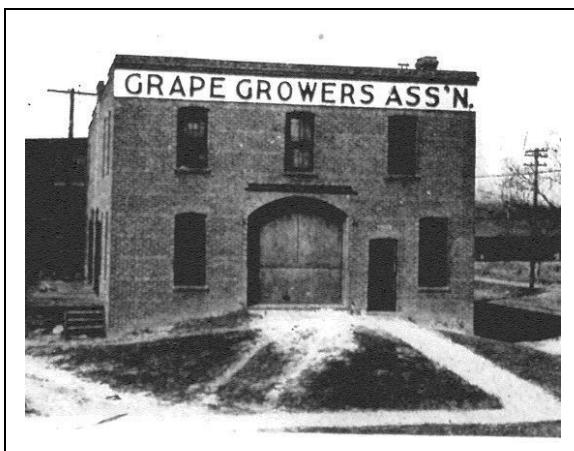
Grape Production & Distribution in Western Iowa by T.J. Maney, Iowa State College of Agriculture & Mechanic Arts Agriculture Experiment Station, 1921 is a historical document placed on microfilm at the ISU library. It is a 22 page document that chronicles the grape industry around Council Bluffs from 1857 to 1921.



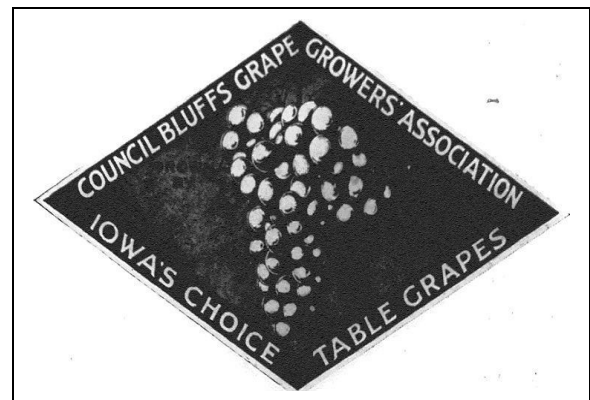
T. J. Maney in A.S. Bohham Vineyard in 1921

A.S. Bonham planted the first commercial vineyard in Iowa in 1857 right outside of Council Bluffs. For perspective, Iowa became a state in 1846. In 1893 the Council Bluffs Grape Growers Association was started by 21 growers with 100 acres of grapes. By 1921 there were 207 growers in the Council Bluffs area with 700 acres of grapes, 113 of these growers were members of the Association. The Assn. normally marketed around 90% of the grapes grown in the area of which 90% were Concord.

Council Bluffs was the major center for grape growing in the late 1800’s and early 1900’s. People were attracted to the fine wind blown loess soils which were similar to those near the Rhine and Moselle in Germany. The 21 rail lines serving Council Bluffs enabled the growers to ship iced carloads all over the country. Typical yields averaged around 3 tons per acre. The cost of producing a ton of Concord grapes in 1921 was estimated at around \$144 and the selling price averaged around \$262 per ton.



Council Bluffs Grape Growers Assn.



“A Guarantee of Quality” Logo

I want to thank Jo Gregg of the Midwest Grape & Wine Industry Institute (MGWII) on the ISU campus for her efforts in posting this historical document for you to view on our homepage here: <http://www.extension.iastate.edu/Wine/Resources/history.htm>

South Dakota Wine Industry Booming

South Dakota wineries produced over 50,000 gallons of wine in 2007, up from 230 gallons in 1997. Governor Bill Even Even says employment and development opportunities tied to the wine industry contribute up to \$10 of value for every \$1 of value in fruit at the farm gate.

- 4-9-08 Taken from KOTA News, South Dakota, Entire article here
http://www.kotatv.com:80/Global/story.asp?S=8139928&nav=menu411_2

Pesticide Supplies Remain Tight

Wayne Peterson of Midwest Grower Supply informed me this Monday that it has been a very interesting year. Pesticide prices continue to increase daily and supplies continue to tighten. Examples, --- Simazine went up \$4.50 per gallon and Bravo Weather Stick went up \$9.50 per gallon recently.

I have mentioned this phenomenon of increasing pesticide prices and decreasing supplies several times recently in this newsletter. Commodity prices are sending a signal to the entire world to produce more. Fertilizer, pesticides, seed, etc..., everything seems to be tight this year.

MGGA Annual Picnic – Save the Date

What: MGGA Annual Potluck Picnic

When: 11AM, Saturday, July 19th, 2008

Where: Maloney's Cannon River Vineyard, 36862 County 57 Blvd, Dennison, MN

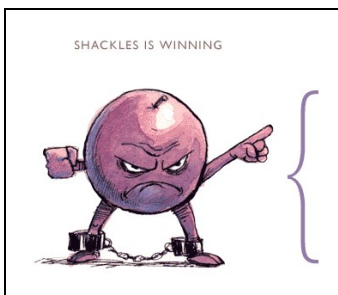
Note: Everyone is asked to bring a least one dish to pass and their favorite beverage. Electricity will be available for crockpots. No RSVP required.

Further Info: Cyndi Ross, 651-647-9403 or clross87@yahoo.com

More details later!

Taken from Spring - 08, Minnesota Grape Growers Association Newsletter

Direct To Consumer Wine Symposium & Trade Show – May 1 & 2 in Napa Valley



Need a tax write off and a short vacation? This looks like an excellent wine marketing meeting right in the middle of Napa Valley. Certainly not an option for many of you, but it could be for some of you. Let me know if any of you may need a paid chaperone!

FREE THE GRAPES!

What: Direct to Consumer Wine Symposium & Trade Show

When: Thursday, Friday, May 1 & 2, 2008

Free The Grapes!

Where: Meritage Resort, Napa, CA: <http://www.themeritageresort.com/>

Cost: \$500 each, full package includes admission, continental breakfast both days, buffet lunch on day one included and the Gala Dinner and Live Auction.

Sponsor: Coalition for Free Trade - Founded in 1997, the Coalition for Free Trade is a 501(c)3 non-profit legal foundation whose goal is to legalize direct-to-consumer shipments of wine from out-of-state wineries and retailers in those states where it is currently prohibited.

More info: <http://www.coalitionforfreetrade.org/symposium/>

Wine Institute Sets Up “Free” Shipping Compliance Portal for Wineries

Shipping wine between states involves a very complex ever changing system of licensing, tax payments and reporting requirements that are beyond the expertise of any one winery. To help in this endeavor, the California Wine Institute has set up an inter-state shipping compliance information portal for its membership. Access is free and open to all here: <http://wineinstitute.shipcompliant.com/> You can select detailed information by state. For example, Iowa allows out-of-state wineries to ship up to 18 liters of wine (24-750 ml bottles) per month per individual.

The shipping compliance portal uses Six88’s proprietary software “ShipCompliant”. The fee based ShipCompliant software provides similar information, but enables its clients to run real-time compliance checks and produce all of the direct shipping excise tax and sales tax reports due throughout the U.S. You can find out more about the ShipCompliant program here: <http://shipcompliant.com/>

Quote of the Week

“The study, conducted by Silicon Valley Bank, pointed out that 88 percent of wineries in the United States were founded after 1975. Of those surveyed, about 51 percent planned to transition ownership of the business in the next 10 years. Many will shift to other family members, but 45 percent said they either have no heirs or none are interested in taking over the winery.”

- Taken from “Good Time for Wineries to Cash In” by Kevin McCallum, The Press Democrat, 4-10-08 : <http://www1.pressdemocrat.com/article/20080410/NEWS/804100364/1036/BUSINESS01>

Neeto-Keeno WWW Stuff

1. 10 Tips for Going Pro in the Wine Business: <http://winemakermag.com/feature/766.html>
2. North Dakota Grape Growers Association: <http://www.ndgga.org/index.html>

Past issues archived as html: <http://www.extension.iastate.edu/Wine/Resources/winegrowernews.htm>
Past issues archived as pdf: <http://www.extension.iastate.edu/ag/newsletters/winegrowers.html>

Total Circulation of 930+ recipients in CA, GA, IA, IN, FL, IL, KS, MN, MO, ND, NE, NY, OR, SD, VT, WA DC, and WI

Please reply with the word "unsubscribe" in the Subject Line if you wish to no longer receive this newsletter.

Michael L. White,
ISU Extension Viticulture Specialist
909 East 2nd St. Suite E, Indianola, IA 50125-2892
ph: 515-961-6237, fax: 6017 or mlwhite@iastate.edu

The U.S. Department of Agriculture (USDA) prohibits discrimination in all its programs and activities on the basis of race, color, national origin, gender, religion, age, disability, political beliefs, sexual orientation, and marital or family status. (Not all prohibited bases apply to all programs.) Many materials can be made available in alternative formats for ADA clients. To file a complaint of discrimination, write USDA, Office of Civil Rights, Room 326-W, Whitten Building, 14th and Independence Avenue, SW, Washington, DC 20250-9410 or call 202-720-5964.