

SW Iowa Crop Update, November 7, 2008

Crop Harvest

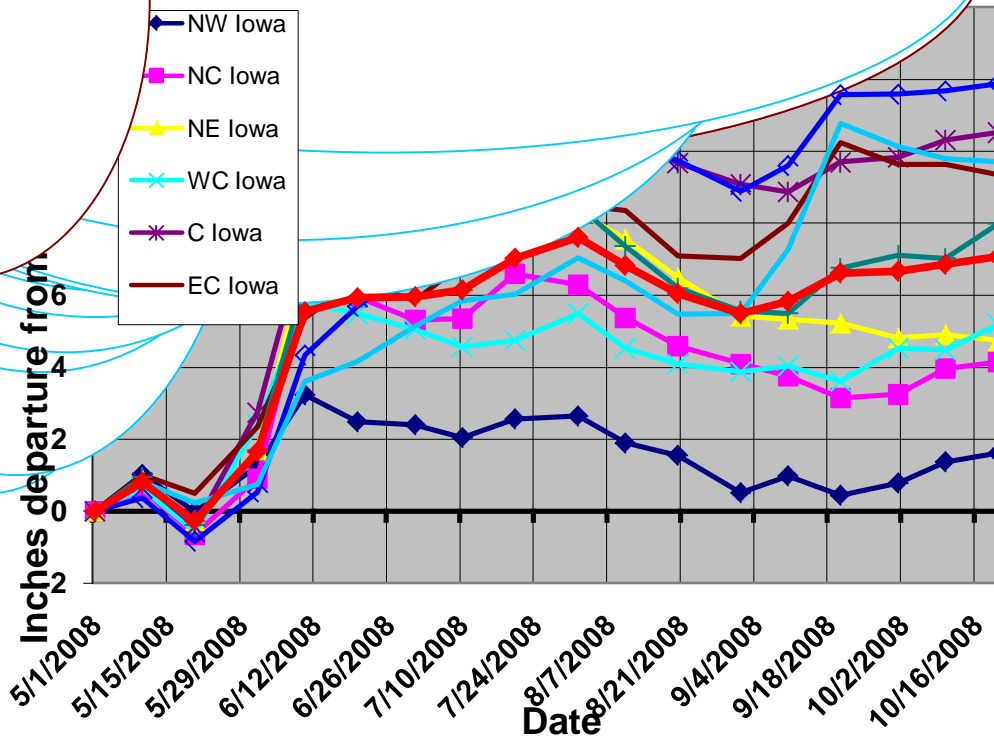
Corn harvest has rapidly progressed in the past two weeks. I would estimate in most of my area, 50% of the corn harvest is complete. The majority of the soybeans are harvested, I have only seen a few fields still in during my recent travels.

The recent weather has put a stop to harvest: 20-30 mph wind, rain, sleet, and snow today hasn't been the best for harvest productivity. I have observed drastic changes in standability of corn fields in the past two weeks. Most noticeable are tops are being blown out. Corn stalks are becoming quite weak and are lodging in sidehills and other susceptible areas. I have received a few phone calls about a few fields that are dropping ears from the shanks breaking away from the stalks.

Harvest will continue with conducive weather. The forecast looks like after today it will be dry but cloudy, Monday there is a chance of precipitation in one form or another, then dry the rest of the week.

Harvest yields have continued to impress most producers. So where did all this corn grain come from? There have many factors that played some role in the corn yields we are seeing: adequate moisture available to the corn plant during the growing season, warm moist soil that mineralized nitrogen in organic matter that was used by the corn plant, and cooler than normal temperatures from silking to physiological maturity. Iowa was about 130 crop growth growing degree days behind the 30 year average. The cooler environment kept the stress related to high temperatures to a minimum. Rich Pope has compiled a graph of precipitation received May-October and the deviation from average. I expect our corn specialist to discuss his thoughts on this topic during meetings and conferences held this winter.

Iowa 2008 Seasonal Rainfall Deviation from Average



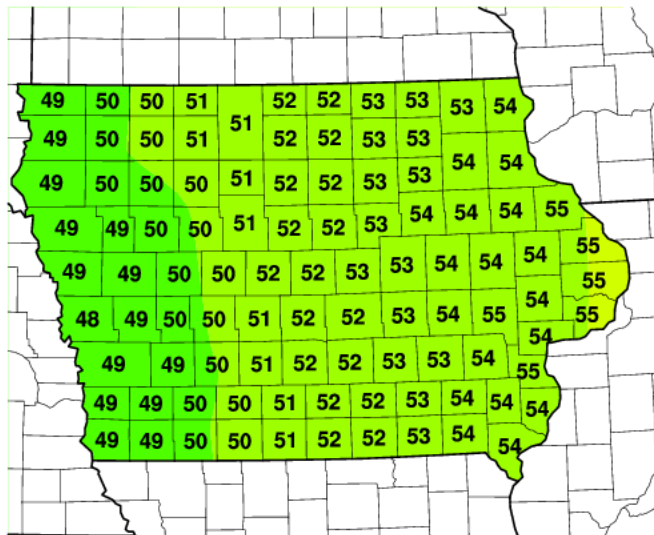
Soil Temperature

In the SW area there are a few custom NH₃ applicators running. Iowa State University data supports the recommendation of waiting until the 4" soil temperature reaches 50 degrees F or below to provide the least risk of N losses.

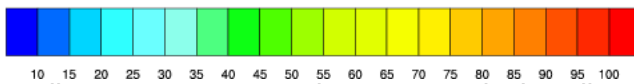
Here is a link to the soil temperatures in Iowa:

http://mesonet.agron.iastate.edu/data/soilt_day1.png

Iowa 4 inch Soil Temperatures Nov 06 2008



[Fahrenheit]



The soil temperature map shows yesterday's soil temperature was at or just below the 50 degree mark. I estimate that the soil temperature will continue to cool with the weather predicted for the next week. I have talked to a few producers that are applying ammonia and they report that the toolbars were pulling easy and sealing well.

Upcoming Events and Programs:

Registration for the Ag Chem Dealer Update is now open!

<http://www.aep.iastate.edu/acu/homepage.html>

Register for the Integrated Crop Management Conference at Ames, Dec. 10-11.

<http://www.aep.iastate.edu/icm/homepage.html>

Agricultural Outlook and Management Seminar in Atlantic Nov. 21 @ the Cass County Comm. Building

<http://www.extension.iastate.edu/agdm/info/meetings.html>

Highlighting:

- Agriculture Industry overview
- Corn and Soybean market outlook
- Swine and Beef market outlook
- Managing Crop Margins for '09
- Legal Issues

If you can't make these mark down your calendar for the Crop Advantage Series

Jan. 29, 2009 @ the Cass County Community Building

Have a safe harvest and fall.

Kyle Jensen

ISU Extension Field Agronomist

(712) 769-2600

jensenkg@iastate.edu