

SW Iowa Crop Update, July 30, 2008

Kyle Jensen

Hot and humid has been the weather for the past week here in SW Iowa. I will be honest, it has slowed my scouting slightly. I have been in several soybean, corn and alfalfa fields in the past week.

Corn

Corn fields are almost 100% in the reproductive stages in SW Iowa. It is very common to see spray planes applying fungicide on corn fields that are fully tasseled. In my scouting I have been seeing increased incidences of common rust, gray leaf spot, and foliar anthracnose. I have received many calls from producers and agronomists around the area about seeing silks before having the tassel emerge this year. As I mentioned in my previous update, at the North Central ASA meeting a few of the presenters talked about hybrids that silk before pollination. Having silks out prior to pollen shed increases the chance they will pollinate without problems. When pollen shed and silk emergence do not overlap it is called; asynchrony, inadequate pollination results. Only later in the season will you see the results of this. This is why more hybrids used today are starting to silk before the tassel fully emerges. Just one more piece of insurance from better genetics. Remember, roughly, 60 days from the silking date corn will reach physiological maturity (black layer).

Soybeans

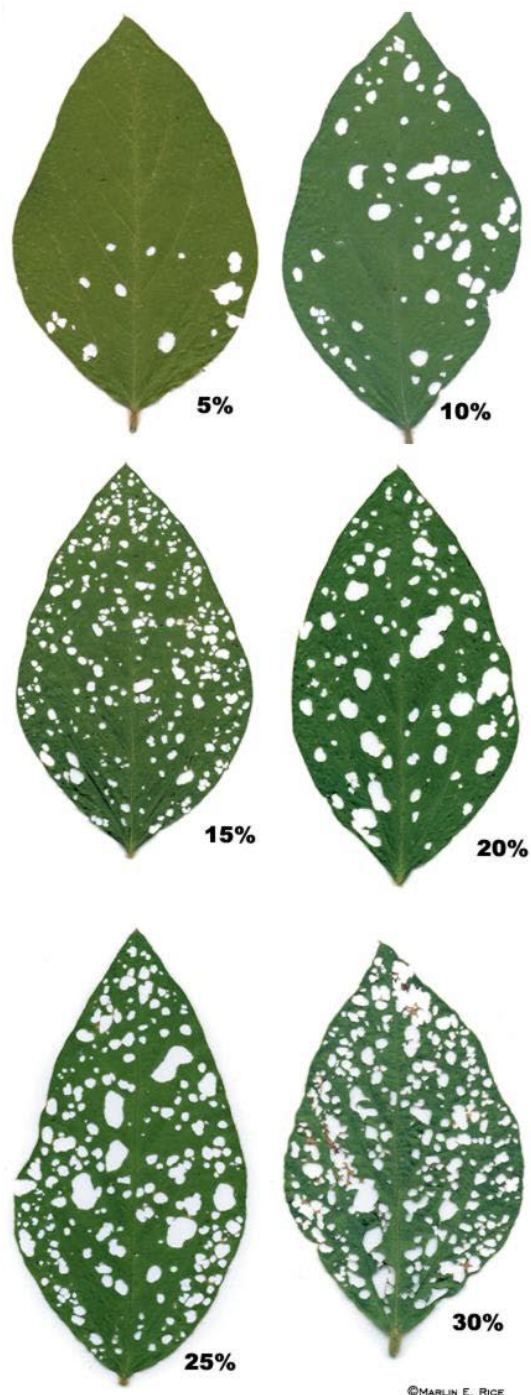
Soybean fields in the area are at the R3 stage. I have not yet seen a field that has reached R4. If anyone has been in their field in the past week or two, you have all observed insect feeding to the leaves. Bean leaf beetles, Grape colapsis, Soybean aphids, and Grasshoppers are all very easily found. Below are some pictures, respectfully, of each of the insects.





The insects, excluding aphids, eat holes in the soybean's leaves. More often than not we look at the leaf feeding and overestimate the percent feeding. When I look at the leaf with 30% defoliation, it looks like 60% to me. Below is the schematic of differing defoliation. Soybeans in vegetative stages can withstand more leaf feeding than soybeans in the reproductive stages. When soybeans reach 20% defoliation, in pod forming or filling stages from any insect or cumulative from many insects the plant will

suffer yield reduction. Consider a treatment to control insects, at this time.



Soybean aphids have been increasing slightly. A few fields or parts of fields have been treated to control aphids. I strongly suggest growers scout their fields this time of year. Soybean fields should be scouted for the Bean Leaf Beetle (BLB). Determining the BLB in the field now indicates if the field will have significant pressure from the second

generation BLB. Here is a link to ISU's Integrated Crop Management News article discussing this.

<http://www.extension.iastate.edu/CropNews/2008/bean+leaf+beetles+coming.htm>

More to come next week, go scout but stay cool.

Kyle Jensen

SW Iowa, Field Agronomist

53020 Hitchcock Avenue

Lewis, IA 51544

(712) 769-2600

Fax (712) 769-2610

jensenkg@iastate.edu