



Data for Decision Makers

Dickinson County

Population

Dickinson County is a nonmetropolitan county in northwest Iowa. Dickinson County is composed of 10 incorporated communities and their surrounding rural areas. From 1990 to 2000, Dickinson County's population increased 10.2 percent. The state's population increased by 5.4 percent over that period.

1. Population of Dickinson County

City	1980	1990	2000
Arnolds Park	1,051	953	1,162
Lake Park	1,123	996	1,023
Milford	2,076	2,170	2,474
Okoboji	559	775	820
Orleans	546	560	583
Spirit Lake	3,976	3,872	4,261
Superior	188	128	142
Terril	420	383	404
Wahpeton	372	484	462
West Okoboji	435	263	432
Balance of County	4,883	4,325	4,661
County Total	15,629	14,909	16,424
State Total	2,913,808	2,776,755	2,926,324

Population Profile

Age distribution

Compared to the state, Dickinson County had a lower percentage of young people (19 or younger) and a higher percentage of older people (age 65+) in 2000. The median age in Dickinson County in 2000 was 6.7 years older than the median age of the state.

2. Percent of population by age

	Dickinson County			State		
	1980	1990	2000	1980	1990	2000
19 or younger	29.4	25.6	23.9	32.3	29.0	28.3
20 to 44	32.2	31.6	28.5	35.1	26.7	34.6
45 to 64	22.2	22.0	26.9	19.2	18.9	22.2
65 or older	16.2	20.8	20.6	13.3	15.3	14.9
Median age	33.5	39.7	43.3	30.0	34.0	36.6

For more information contact

The Dickinson County Extension Office

Corinne Peterson, County Extension Education Director
1600 15th Street
Spirit Lake, Iowa 51360-2106

Phone: (712) 336-3488
Fax: (712) 336-3498
E-mail: xdickinson@iastate.edu

Your Northwest Iowa Extension Community Development Specialists

Alan Vandelaar
4301 Sergeant Road
Suite 213
Sioux City, Iowa 51106

Jane Goeken
110 West 4th Street
Suite 100
Spencer, Iowa 51301

Phone: (712) 276-2157
Fax: (712) 276-6211
E-mail: alanv@iastate.edu

Phone: (712) 262-2264
Fax: (712) 262-8481
E-mail: jngoeken@iastate.edu

IOWA STATE UNIVERSITY
University Extension

Community Profile

Race/Ethnicity

As with the other 98 counties in the state, Dickinson County is predominantly white, with little noticeable change since 1980.

3. Percentage of population by race/Hispanic origin

	Dickinson County			State		
	1980	1990	2000	1980	1990	2000
One Race Only *	100.0	100.0	99.6	100.0	100.0	98.9
White	99.6	99.5	98.9	97.4	96.6	93.9
Black	0.0	0.1	0.2	1.4	1.7	2.1
Asian/Pacific Islander	0.1	0.2	0.2	0.4	0.9	1.3
American Indian	0.1	0.1	0.2	0.2	0.3	0.3
Other	0.2	0.1	0.1	0.6	0.5	1.3
Two or more races *	n.a.	n.a.	0.4	n.a.	n.a.	1.1
Hispanic origin **	0.3	0.3	0.7	0.9	1.2	2.8

* 2000 was the first census that allowed respondents to identify themselves in two or more racial categories.

** Hispanics can be of any race.

Education

Educational levels of an adult population are measured by the educational attainment of residents after their education is largely complete (25 years of age or older). In 2000, Dickinson County had a higher percentage of college graduates than the state overall.

4. Educational levels of adults 25 or older

	Dickinson County		State	
	1990	2000	1990	2000
Percent with:				
Less than 12 years	15.9	10.8	19.9	13.9
High school graduate	39.0	35.3	38.5	36.1
Less than 4 years college	27.6	32.6	24.7	28.8
4 or more years college	17.5	21.3	16.9	21.2

Income and Poverty

Since 1979, median household income in Dickinson County increased \$3,218 (adjusted dollars). In 1999, Dickinson had a median income \$449 lower than the state.

5. Median Household income (in 1999 \$)

	1979	1989	1999
Dickinson County	\$35,802	\$33,565	\$39,020
State	\$37,515	\$34,921	\$39,469

Poverty rates in Dickinson County declined between 1979 and 1999; state levels also declined.

6. Percent of population in poverty

	1979	1989	1999
Dickinson County	8.5	9.2	6.0
State	10.1	11.5	9.1

Housing

Dickinson County had a lower percentage of owner-occupied housing, higher median housing value, and lower median rent than the state in 2000. Dickinson County also had a larger percentage of newer housing units than the state.

7. Housing characteristics, 1990-2000

	Dickinson County		State	
	1990	2000	1990	2000
Total units	9,723	11,375	1,143,669	1,232,511
Percent of units:				
Owner-occupied	48.0	48.7	64.0	67.5
Renter-occupied	15.4	13.7	26.2	25.8
Vacant/seasonal	36.6	37.6	9.8	6.8
10 or fewer years old	11.5	19.1	10.0	12.3
40 or more years old	36.8	37.9	42.9	51.1
Single detached homes	77.8	74.3	74.6	74.0
Mobile homes	9.2	9.9	5.0	5.3
Median value	\$49,400	\$96,800	\$45,900	\$82,500
Median gross rent	\$292	\$416	\$336	\$470

Employment and Earnings Profile

Employment

The labor force in any area consists of all persons aged 16 or older who either are currently employed or actively seeking work. The number employed is simply the number of labor force participants who currently have jobs. Labor force participants who are not employed and, to a lesser extent, non-participants in the labor force form a pool of available labor. The size of this pool and its skill level are often important factors in economic development efforts.

8. Labor force and employment rates

	<u>1990</u>	<u>1999</u>	<u>2000</u>
Total labor force:			
Dickinson County	8,030	9,660	9,790
State	1,448,000	1,572,800	1,563,100
Employment rate (%):			
Dickinson County	96.8	97.5	97.5
State	95.7	97.5	97.4

Occupation

Among the 8,468 employed persons age 16 or older in Dickinson County in 2000, the largest segment was employed in management, professional, or related occupations.

9. Occupations of employed persons 16 years of age or older

	<u>Dickinson County</u>	<u>State</u>
Total employed	8,468	1,489,816
Percentage in:		
Management, professional or related occupations	29.9	31.3
Service occupations	13.9	14.8
Sales and office occupations	25.9	25.9
Farming, fishing, and forestry occupations	0.9	1.1
Construction, extraction, and maintenance occupations	10.3	8.9
Production, transportation, and material moving occupations	19.2	18.1

Employment earnings

The earnings in Table 10 represent earnings by place of work. This is an enumeration of jobs located within the county, whether or not those jobs are filled by county residents. As a result, county residents who commute out of Dickinson County to work are not counted, but non-county residents who commute into Dickinson County to work are included.

10. Earnings of employed persons 16 years of age or older, by place of work

Industry	Total Earnings (\$000)			Share of Total (%)			
	Dickinson County			Dickinson County		State	
	<u>1990</u>	<u>1999</u>	<u>2000</u>	<u>1990</u>	<u>2000</u>	<u>1990</u>	<u>2000</u>
All Industries	158,067	276,037	298,915	100.0	100.0	100.0	100.0
Farm	13,453	6,672	11,954	8.5	4.0	6.0	4.2
Manufacturing	41,917	76,754	81,965	26.5	27.4	22.6	19.8
Retail	22,110	37,580	40,306	14.0	13.5	9.6	9.2
Finance *	6,402	16,264	17,797	4.1	6.0	6.1	7.9
Services	32,121	58,702	59,808	20.3	20.0	19.6	22.9
Government	20,252	31,776	33,854	12.8	11.3	16.8	15.9
Other **	21,812	48,289	53,231	13.8	17.8	19.2	20.1

* Finance, insurance, and real estate

** Agricultural services, mining, construction, transportation, public utilities, and wholesale trade

Retail Trade Profile

Retail Sales

The relative strength of the retail sector in a county is measured by the pull factor. The pull factor is derived by dividing the county per capita retail sales by state per capita retail sales. Pull factors greater than 1 represent retail sector strength, while pull factors less than 1 show sector weakness.

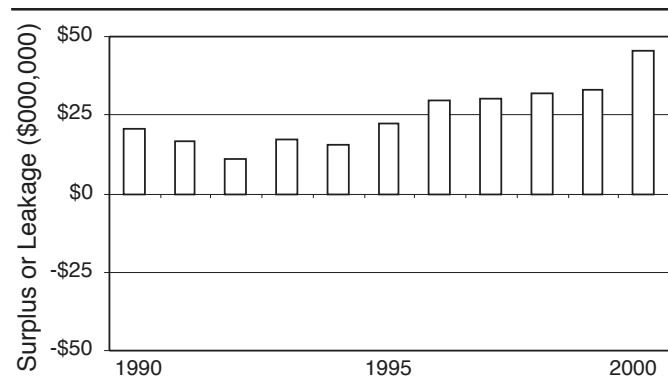
11. Dickinson County retail sales

	<u>Number of Retail Firms</u>	<u>Total sales (millions)</u>	<u>Per capita sales</u>	<u>Pull factor</u>
1996	893	\$165.14	\$10,580	1.28
1997	901	\$174.07	\$11,070	1.29
1998	922	\$180.99	\$11,272	1.27
1999	894	\$192.13	\$11,834	1.28
2000	885	\$207.82	\$12,653	1.34

Retail Trade Analysis

Potential sales is an estimate of the amount of money that could be spent on retail goods and services by residents of the county based on the county's income and population. Potential sales is calculated by multiplying the county population by the per capita sales for the state and adjusting for the county's income level. A "surplus" indicates that trade is being pulled from beyond the county, while a "leakage" indicates that the county is losing shopping dollars to other counties.

Figure 1. Retail trade analysis, Dickinson County



12. Retail sales by merchandise category, Dickinson County

	<u>Sales (millions)</u>			<u>Number of Firms</u>			<u>Percent of Total</u>			<u>Surplus or leakage (millions)</u>
	<u>1996</u>	<u>1999</u>	<u>2000</u>	<u>1996</u>	<u>1999</u>	<u>2000</u>	<u>1996</u>	<u>1999</u>	<u>2000</u>	<u>2000</u>
Building Materials	\$7.00	\$7.69	\$7.94	19	17	20	4.2	4.0	3.8	-\$3.59
General Merchandise	\$25.52	\$27.80	\$35.57	16	14	14	15.5	14.5	17.1	\$11.02
Food	\$5.66	\$5.07	*	5	6	*	3.4	2.6	*	*
Apparel	\$1.60	\$1.82	\$1.86	22	20	18	1.0	0.9	0.9	-\$2.00
Home Furnishings	\$3.38	\$4.28	\$4.61	30	25	24	2.0	2.2	2.2	-\$2.40
Eating and drinking	\$20.55	\$24.48	\$26.73	88	86	84	12.4	12.7	12.9	\$12.69
Specialty Stores	\$15.58	\$17.65	\$16.78	206	208	203	9.4	9.2	8.1	\$4.40
Services	\$22.19	\$28.19	\$27.76	240	244	241	13.4	14.7	13.4	\$6.33
Wholesale	\$4.78	\$5.80	\$6.24	39	43	41	2.9	3.0	3.0	-\$8.84
Other	\$58.88	\$69.36	\$80.32	229	233	240	35.7	36.1	38.7	
Total	\$165.14	\$192.13	\$207.82	893	894	885	100.0	100.0	100.0	\$45.42

* Data suppressed to protect the confidentiality of reports from individual businesses.

... and justice for all

The U.S. Department of Agriculture (USDA) prohibits discrimination in all its programs and activities on the basis of race, color, national origin, gender, religion, age, disability, political beliefs, sexual orientation, and marital or family status. (Not all prohibited bases apply to all programs.) Many materials can be made available in alternative formats for ADA clients. To file a complaint of discrimination, write USDA, Office of Civil Rights, Room 326-W, Whitten Building, 14th and Independence Avenue, SW, Washington, DC 20250-9410 or call 202-720-5964.

Issued in furtherance of Cooperative Extension work, Acts of May 8 and June 30, 1914, in cooperation with the U.S. Department of Agriculture. Stanley R. Johnson, director, Cooperative Extension Service, Iowa State University of Science and Technology, Ames, Iowa.

Information in this county profile was derived from data from:

Iowa Workforce Development (Table 8), the United States Bureau of Economic Analysis (Table 10), the ISU Extension Retail Trade Analysis Program (Tables 11 and 12 and Figure 1), and the United States Bureau of the Census (all other tables)

This series was prepared by:

Margie Hanson, Census Services, with assistance from Georgeanne Artz, Extension Retail Analysis Program, and Mark Imerman, Rural Data Project, at Iowa State University.

For more information on these and other topics, please call the extension specialists listed on the cover page or visit the extension internet site at <http://www.extension.iastate.edu/communities/>