

# Data for Decision Makers

## Carroll County

### Population

Carroll County is a nonmetropolitan county in northwest Iowa. Carroll County is composed of 13 incorporated communities and their surrounding rural areas. From 1990 to 2000, Carroll County's population did not change. The state's population increased by 5.4 percent over that period.

#### 1. Population of Carroll County

| City                | 1980             | 1990             | 2000             |
|---------------------|------------------|------------------|------------------|
| Arcadia             | 454              | 485              | 443              |
| Breda               | 502              | 467              | 477              |
| Carroll             | 9,705            | 9,579            | 10,106           |
| Coon Rapids         | 1,448            | 1,266            | 1,305            |
| Dedham              | 321              | 264              | 280              |
| Glidden             | 1,076            | 1,099            | 1,253            |
| Halbur              | 229              | 215              | 202              |
| Lanesboro           | 196              | 182              | 152              |
| Lidderdale          | 197              | 202              | 186              |
| Manning             | 1,609            | 1,484            | 1,490            |
| Ralston (part) *    | 102              | 111              | 93               |
| Templeton           | 319              | 321              | 334              |
| Willey              | 94               | 78               | 103              |
| Balance of County   | 6,699            | 5,670            | 4,997            |
| <b>County Total</b> | <b>22,951</b>    | <b>21,423</b>    | <b>21,421</b>    |
| <b>State Total</b>  | <b>2,913,808</b> | <b>2,776,755</b> | <b>2,926,324</b> |

\* Indicates municipality crosses county border; figure is the portion of population in this county only.

### Population Profile

#### Age distribution

Compared to the state, Carroll County had a higher percentage of young people (19 or younger) and a higher percentage of older people (age 65+) in 2000. The median age in Carroll County in 2000 was 2.1 years older than the median age of the state.

#### 2. Percent of population by age

|               | Carroll County |      |      | State |      |      |
|---------------|----------------|------|------|-------|------|------|
|               | 1980           | 1990 | 2000 | 1980  | 1990 | 2000 |
| 19 or younger | 35.5           | 31.9 | 29.5 | 32.3  | 29.0 | 28.3 |
| 20 to 44      | 30.1           | 31.9 | 30.7 | 35.1  | 26.7 | 34.6 |
| 45 to 64      | 19.6           | 18.4 | 21.0 | 19.2  | 18.9 | 22.2 |
| 65 or older   | 14.8           | 17.8 | 18.7 | 13.3  | 15.3 | 14.9 |
| Median age    | 29.4           | 34.2 | 38.7 | 30.0  | 34.0 | 36.6 |

#### For more information contact

##### The Carroll County Extension Office

Dennis Molitor, County Extension Education Director  
1240 Heires Ave, Suite D  
Carroll, Iowa 51401-3339

Phone: (712) 792-2364

Fax: (712) 792-2366

E-mail: xcarroll@iastate.edu

##### Your Northwest Iowa Extension Community Development Specialists

Alan Vandelaar  
4301 Sergeant Road  
Suite 213  
Sioux City, Iowa 51106

Jane Goeken  
110 West 4th Street  
Suite 100  
Spencer, Iowa 51301

Phone: (712) 276-2157

Fax: (712) 276-6211

E-mail: alanv@iastate.edu

Phone: (712) 262-2264

Fax: (712) 262-8481

E-mail: jngoeken@iastate.edu

**IOWA STATE UNIVERSITY**  
University Extension

DD 14 Revised September 2002

**ISU Extension to Communities**

# Community Profile

## Race/Ethnicity

As with the other 98 counties in the state, Carroll County is predominantly white, with little noticeable change since 1980.

### 3. Percentage of population by race/Hispanic origin

|                        | Carroll County |       |      | State |       |      |
|------------------------|----------------|-------|------|-------|-------|------|
|                        | 1980           | 1990  | 2000 | 1980  | 1990  | 2000 |
| One Race Only *        | 100.0          | 100.0 | 99.7 | 100.0 | 100.0 | 98.9 |
| White                  | 99.7           | 99.5  | 98.9 | 97.4  | 96.6  | 93.9 |
| Black                  | 0.0            | 0.0   | 0.2  | 1.4   | 1.7   | 2.1  |
| Asian/Pacific Islander | 0.2            | 0.3   | 0.3  | 0.4   | 0.9   | 1.3  |
| American Indian        | 0.1            | 0.1   | 0.1  | 0.2   | 0.3   | 0.3  |
| Other                  | 0.0            | 0.1   | 0.2  | 0.6   | 0.5   | 1.3  |
| Two or more races *    | n.a.           | n.a.  | 0.3  | n.a.  | n.a.  | 1.1  |
| Hispanic origin **     | 0.4            | 0.3   | 0.5  | 0.9   | 1.2   | 2.8  |

\* 2000 was the first census that allowed respondents to identify themselves in two or more racial categories.

\*\* Hispanics can be of any race.

## Education

Educational levels of an adult population are measured by the educational attainment of residents after their education is largely complete (25 years of age or older). In 2000, Carroll County had a lower percentage of college graduates than the state overall.

### 4. Educational levels of adults 25 or older

|                           | Carroll County |      | State |      |
|---------------------------|----------------|------|-------|------|
|                           | 1990           | 2000 | 1990  | 2000 |
| <b>Percent with:</b>      |                |      |       |      |
| Less than 12 years        | 25.4           | 16.3 | 19.9  | 13.9 |
| High school graduate      | 41.3           | 39.8 | 38.5  | 36.1 |
| Less than 4 years college | 22.0           | 27.9 | 24.7  | 28.8 |
| 4 or more years college   | 11.3           | 16.0 | 16.9  | 21.2 |

## Income and Poverty

Since 1979, median household income in Carroll County increased \$1,301 (adjusted dollars). In 1999, Carroll had a median income \$2,194 lower than the state.

### 5. Median Household income (in 1999 \$)

|                | 1979     | 1989     | 1999     |
|----------------|----------|----------|----------|
| Carroll County | \$35,974 | \$32,474 | \$37,275 |
| State          | \$37,515 | \$34,921 | \$39,469 |

Poverty rates in Carroll County declined between 1979 and 1999; state levels also declined.

### 6. Percent of population in poverty

|                | 1979 | 1989 | 1999 |
|----------------|------|------|------|
| Carroll County | 8.8  | 10.6 | 6.5  |
| State          | 10.1 | 11.5 | 9.1  |

## Housing

Carroll County had a higher percentage of owner-occupied housing, lower median housing value, and lower median rent than the state in 2000. Carroll County also had a larger percentage of newer housing units than the state.

### 7. Housing characteristics, 1990-2000

|                          | Carroll County |          | State     |           |
|--------------------------|----------------|----------|-----------|-----------|
|                          | 1990           | 2000     | 1990      | 2000      |
| <b>Total units</b>       | 8,356          | 9,019    | 1,143,669 | 1,232,511 |
| <b>Percent of units:</b> |                |          |           |           |
| Owner-occupied           | 69.9           | 70.0     | 64.0      | 67.5      |
| Renter-occupied          | 25.4           | 24.1     | 26.2      | 25.8      |
| Vacant/seasonal          | 4.7            | 5.9      | 9.8       | 6.8       |
| 10 or fewer years old    | 9.6            | 13.4     | 10.0      | 12.3      |
| 40 or more years old     | 46.8           | 55.0     | 42.9      | 51.1      |
| Single detached homes    | 83.5           | 82.0     | 74.6      | 74.0      |
| Mobile homes             | 1.6            | 1.9      | 5.0       | 5.3       |
| Median value             | \$42,000       | \$75,900 | \$45,900  | \$82,500  |
| Median gross rent        | \$283          | \$403    | \$336     | \$470     |

# Employment and Earnings Profile

## Employment

The labor force in any area consists of all persons aged 16 or older who either are currently employed or actively seeking work. The number employed is simply the number of labor force participants who currently have jobs. Labor force participants who are not employed and, to a lesser extent, non-participants in the labor force form a pool of available labor. The size of this pool and its skill level are often important factors in economic development efforts.

### 8. Labor force and employment rates

|                             | <u>1990</u> | <u>1999</u> | <u>2000</u> |
|-----------------------------|-------------|-------------|-------------|
| <b>Total labor force:</b>   |             |             |             |
| Carroll County              | 10,690      | 12,510      | 12,250      |
| State                       | 1,448,000   | 1,572,800   | 1,563,100   |
| <b>Employment rate (%):</b> |             |             |             |
| Carroll County              | 95.9        | 97.8        | 97.6        |
| State                       | 95.7        | 97.5        | 97.4        |

## Occupation

Among the 10,982 employed persons age 16 or older in Carroll County in 2000, the largest segment was employed in management, professional, or related occupations.

### 9. Occupations of employed persons 16 years of age or older

|                                                             | <u>Carroll County</u> | <u>State</u> |
|-------------------------------------------------------------|-----------------------|--------------|
| Total employed                                              | 10,982                | 1,489,816    |
| <b>Percentage in:</b>                                       |                       |              |
| Management, professional or related occupations             | 28.3                  | 31.3         |
| Service occupations                                         | 14.5                  | 14.8         |
| Sales and office occupations                                | 28.0                  | 25.9         |
| Farming, fishing, and forestry occupations                  | 1.9                   | 1.1          |
| Construction, extraction, and maintenance occupations       | 10.9                  | 8.9          |
| Production, transportation, and material moving occupations | 16.4                  | 18.1         |

## Employment earnings

The earnings in Table 10 represent earnings by place of work. This is an enumeration of jobs located within the county, whether or not those jobs are filled by county residents. As a result, county residents who commute out of Carroll County to work are not counted, but non-county residents who commute into Carroll County to work are included.

### 10. Earnings of employed persons 16 years of age or older, by place of work

| Industry       | Total Earnings (\$000) |                |             | Share of Total (%) |             |             |             |
|----------------|------------------------|----------------|-------------|--------------------|-------------|-------------|-------------|
|                | <u>1990</u>            | Carroll County |             | Carroll County     |             | State       |             |
|                |                        | <u>1999</u>    | <u>2000</u> | <u>1990</u>        | <u>2000</u> | <u>1990</u> | <u>2000</u> |
| All Industries | 225,332                | 343,302        | 376,851     | 100.0              | 100.0       | 100.0       | 100.0       |
| Farm           | 31,830                 | 8,888          | 34,658      | 14.1               | 9.2         | 6.0         | 4.2         |
| Manufacturing  | 23,718                 | 45,296         | 45,933      | 10.5               | 12.2        | 22.6        | 19.8        |
| Retail         | 26,294                 | 35,587         | 37,815      | 11.7               | 10.0        | 9.6         | 9.2         |
| Finance *      | 9,635                  | 29,354         | 30,050      | 4.3                | 8.0         | 6.1         | 7.9         |
| Services       | 45,846                 | 76,097         | 81,139      | 20.3               | 21.5        | 19.6        | 22.9        |
| Government     | 23,554                 | 37,780         | 39,549      | 10.5               | 10.5        | 16.8        | 15.9        |
| Other **       | 64,455                 | 110,300        | 107,707     | 28.6               | 28.6        | 19.2        | 20.1        |

\* Finance, insurance, and real estate

\*\* Agricultural services, mining, construction, transportation, public utilities, and wholesale trade

# Retail Trade Profile

## Retail Sales

The relative strength of the retail sector in a county is measured by the pull factor. The pull factor is derived by dividing the county per capita retail sales by state per capita retail sales. Pull factors greater than 1 represent retail sector strength, while pull factors less than 1 show sector weakness.

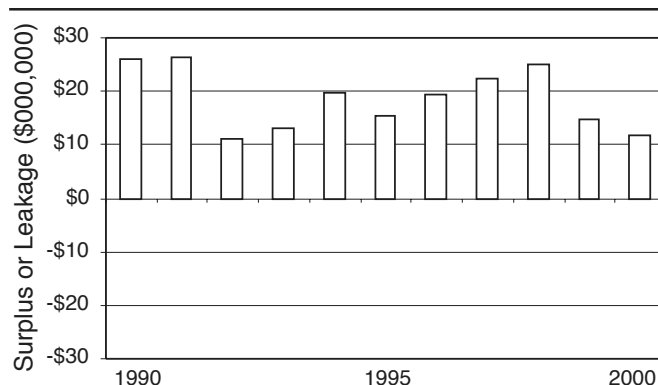
### 11. Carroll County retail sales

|      | Number of Retail Firms | Total sales (millions) | Per capita sales | Pull factor |
|------|------------------------|------------------------|------------------|-------------|
| 1996 | 875                    | \$179.34               | \$8,303          | 1.00        |
| 1997 | 879                    | \$191.01               | \$8,869          | 1.03        |
| 1998 | 877                    | \$200.54               | \$9,257          | 1.04        |
| 1999 | 856                    | \$205.61               | \$9,472          | 1.03        |
| 2000 | 859                    | \$208.11               | \$9,715          | 1.03        |

## Retail Trade Analysis

Potential sales is an estimate of the amount of money that could be spent on retail goods and services by residents of the county based on the county's income and population. Potential sales is calculated by multiplying the county population by the per capita sales for the state and adjusting for the county's income level. A "surplus" indicates that trade is being pulled from beyond the county, while a "leakage" indicates that the county is losing shopping dollars to other counties.

Figure 1. Retail trade analysis, Carroll County



### 12. Retail sales by merchandise category, Carroll County

|                     | Sales (millions) |                 |                 | Number of Firms |            |            | Percent of Total |              |              | Surplus or leakage (millions) |
|---------------------|------------------|-----------------|-----------------|-----------------|------------|------------|------------------|--------------|--------------|-------------------------------|
|                     | 1996             | 1999            | 2000            | 1996            | 1999       | 2000       | 1996             | 1999         | 2000         | 2000                          |
| Building Materials  | \$10.91          | \$15.29         | \$14.94         | 23              | 25         | 26         | 6.1              | 7.4          | 7.2          | \$1.00                        |
| General Merchandise | \$34.20          | \$40.16         | \$40.92         | 23              | 22         | 22         | 19.1             | 19.5         | 19.7         | \$11.21                       |
| Food                | \$31.57          | \$34.30         | \$33.57         | 15              | 12         | 12         | 17.6             | 16.7         | 16.1         | \$4.32                        |
| Apparel             | \$6.56           | \$6.46          | \$6.07          | 18              | 17         | 16         | 3.7              | 3.1          | 2.9          | \$1.40                        |
| Home Furnishings    | \$6.74           | \$7.29          | \$6.56          | 28              | 25         | 22         | 3.8              | 3.5          | 3.2          | -\$1.92                       |
| Eating and drinking | \$13.88          | \$14.37         | \$14.95         | 65              | 62         | 56         | 7.7              | 7.0          | 7.2          | -\$2.04                       |
| Specialty Stores    | \$12.02          | \$12.89         | \$12.66         | 126             | 112        | 117        | 6.7              | 6.3          | 6.1          | -\$2.31                       |
| Services            | \$20.73          | \$25.87         | \$27.79         | 283             | 284        | 287        | 11.6             | 12.6         | 13.4         | \$1.86                        |
| Wholesale           | \$21.24          | \$27.24         | \$29.61         | 84              | 85         | 86         | 11.8             | 13.3         | 14.2         | \$11.37                       |
| Other               | \$21.49          | \$21.74         | \$21.04         | 211             | 212        | 215        | 12.0             | 10.6         | 10.1         |                               |
| <b>Total</b>        | <b>\$179.34</b>  | <b>\$205.61</b> | <b>\$208.11</b> | <b>875</b>      | <b>856</b> | <b>859</b> | <b>100.0</b>     | <b>100.0</b> | <b>100.0</b> | <b>\$11.61</b>                |

... and justice for all

The U.S. Department of Agriculture (USDA) prohibits discrimination in all its programs and activities on the basis of race, color, national origin, gender, religion, age, disability, political beliefs, sexual orientation, and marital or family status. (Not all prohibited bases apply to all programs.) Many materials can be made available in alternative formats for ADA clients. To file a complaint of discrimination, write USDA, Office of Civil Rights, Room 326-W, Whitten Building, 14th and Independence Avenue, SW, Washington, DC 20250-9410 or call 202-720-5964.

Issued in furtherance of Cooperative Extension work, Acts of May 8 and June 30, 1914, in cooperation with the U.S. Department of Agriculture. Stanley R. Johnson, director, Cooperative Extension Service, Iowa State University of Science and Technology, Ames, Iowa.

### Information in this county profile was derived from data from:

Iowa Workforce Development (Table 8), the United States Bureau of Economic Analysis (Table 10), the ISU Extension Retail Trade Analysis Program (Tables 11 and 12 and Figure 1), and the United States Bureau of the Census (all other tables)

### This series was prepared by:

Margie Hanson, Census Services, with assistance from Georgeanne Artz, Extension Retail Analysis Program, and Mark Imerman, Rural Data Project, at Iowa State University.

For more information on these and other topics, please call the extension specialists listed on the cover page or visit the extension internet site at <http://www.extension.iastate.edu/communities/>