



CLOTHING PROGRAM: REVUE & SELECTION



Judging: Monday, June 27

Cassie Gerst

Andrea Wright

Youth: Olivia Lounsbury and Hannah Smith

1. Judging will be on Monday, June 27 beginning at 3:30 p.m. The public clothing program will be Monday, July 11 during the Henry County Fair Queen Contest located in the Wright Pavilion.
2. Members may have two entries in each division with a maximum of six entries, but may participate in only one division at the State Fair.
3. When application of design elements and art principles must be explained, the following guidelines shall be used: Members in grades 4-6 are responsible for application of the design element line or color. Members in grades 7-8 are responsible for application of two design elements. Members in grades 9-12 are responsible for application of at least one design element and at least one principle of design.

FASHION REVUE

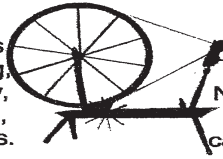
1. All participants should model a garment or outfit the entrant has constructed, hand knitted, or crocheted during the current 4-H year.
2. Acceptable Fashion Revue entries are garments or outfits consisting of one to three pieces, such as party clothes, tailored suits, vests, slacks, shirt, active sportswear, and/or coats.
3. Blouses, shirts, and sweaters are usually considered garments. If they are used to complete an outfit, they may be constructed or selected. All other accessories and undergarments may be constructed or selected.
4. Only senior 4-H members are eligible to advance to the State Fair in the Fashion Revue Event.

CLOTHING SELECTION

1. All Participants should select and/ or purchase an outfit that represents the 4-Her's goal or intended use for the selected outfit.
2. All participants should have had individual planned or county experiences in choosing shopping alternatives, evaluating fit, quality and construction features, price and cost comparison.
3. Outfits may be selected and/or purchased from any source, including consignment shops, used clothing stores, etc. Clothing items which are home sewn are not eligible unless the completed garment was purchased from a used clothing source. Clothing items which are custom sewn specifically for the participants are not eligible.
4. Only senior 4-H members are eligible to advance to the State Fair Clothing Selection Event.

COUNTRY LANE FIBER ARTS & GIFTS

Ashford - Louet - Schacht
Spinning Wheel & Loom Kits
Lace making, Tatting, Twining,
Knitting, Crochet, Embroidery,
Beads, Books, Fibers, Dyes,
Yarns, Equipment, & Supplies.



Diana Weigert
2860 Quincy Ave.
New London, IA 52645
319-367-5065
call for seasonal hours
or appointment

Classes Available
Swallow Casein Knitting Needles

clfa@iowatelecom.net

www.countrylanefiberarts.homestead.com/Home.html



PHI[®]
INSURANCE
SERVICES

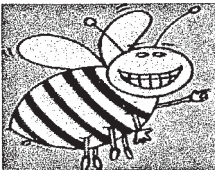
Sandeen Seeds

Ralph & Cherry Sandeen

1505 E Winfield Ave.
Mt. Pleasant Iowa
(319) 385-2888



Crop Insurance



Hill House Fruit & Honey

Mt Pleasant, IA 52641

Call 319-931-6574

Honeybee Removal Service

Home of the: **“Swarm Chasers”**



MT. PLEASANT CHRISTIAN SCHOOL

KNIGHTS

1505 E Washington Street

Mt. Pleasant, IA 52641

Phone: 319-385-8613

mpecoffice@lisco.com

“Quality education from a Christian perspective”

CLOTHING DEPARTMENT (CONT.)

THE \$15 CHALLENGE

All participants to qualify for participation in the state event should:

1. Purchase an outfit that represents the 4-Hers goal or intended use for the selected outfit.
2. Have had individual planned or county experiences(s) in choosing shopping alternatives, evaluating fit quality and construction features, price and cost comparison.
3. Outfits MUST be selected and/or purchased from a garage sale, consignment store, or resale shop (i.e. Goodwill, Salvation Army).
4. Cost of outfit must be \$15 or less, not including shoes, accessories, or undergarments.
5. Receipt(s) MUST be turned in with Clothing Event Report Form.

CLOTHING PROGRAM AWARD DONORS

Fashion Revue State Fair – Cindy McAllister representing Crossroads Financial Group
Clothing Selection State Fair – Two Rivers Bank
\$15 Challenge State Fair – ISU Extension – Henry County
Other Awards donated by Becker's Jewelers

No **two** fields are alike.



syngenta

Boshart Sales, Inc.

319-256-5555

Coming soon to Henry County



Bio-NRG, L.L.C.

"The Science of Nature"®

*Soybean Crush/Biodiesel
Plant*

For more information contact Bob Hall at bhall@bio-nrg.net

mount pleasant

dental
— associates

Jeffery E. Sitar, D.D.S.

304 NORTH JEFFERSON MOUNT PLEASANT, IOWA 52641 319.385.8912

mount pleasant dental