



Place mouse on this icon when present to read slide notes.

Crop Weather Update

24 June 2008

Dr. Elwynn Taylor

Extension Climatologist

Office Phone: (515) 294-1923

E-mail: setaylor@iastate.edu

Web Site:

www.extension.iastate.edu/weather

Conditions

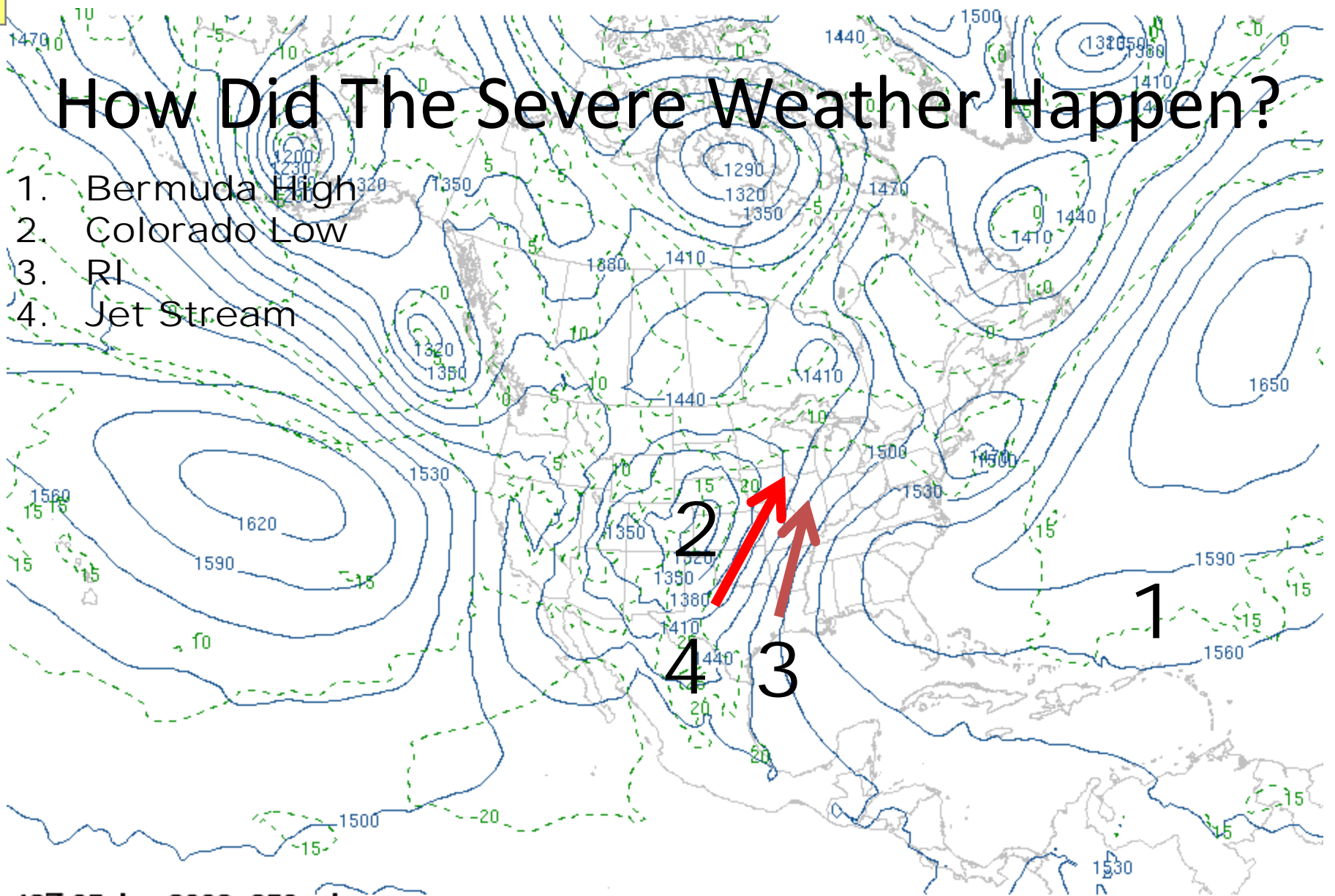
- Greatest Potential Sunlight (15hr 15min @ Ames, IA on June 20). Diminishes in brightness & in duration to 11 hr on Sep 16 (aver. date of maturity for corn in IA)
- Soil was not conspicuous even looking down the rows for numerous fields of corn in WC IA this week. With temperatures in the upper 80's & the plants capturing near max. light this is favorable.
- A “typical” summer weather pattern has replaced the storm generating pattern of the past 2 months.

http://aa.usno.navy.mil/data/docs/Dur_OneYear.php

<http://www.nass.usda.gov/> request “US and State Data” and select “crops.”

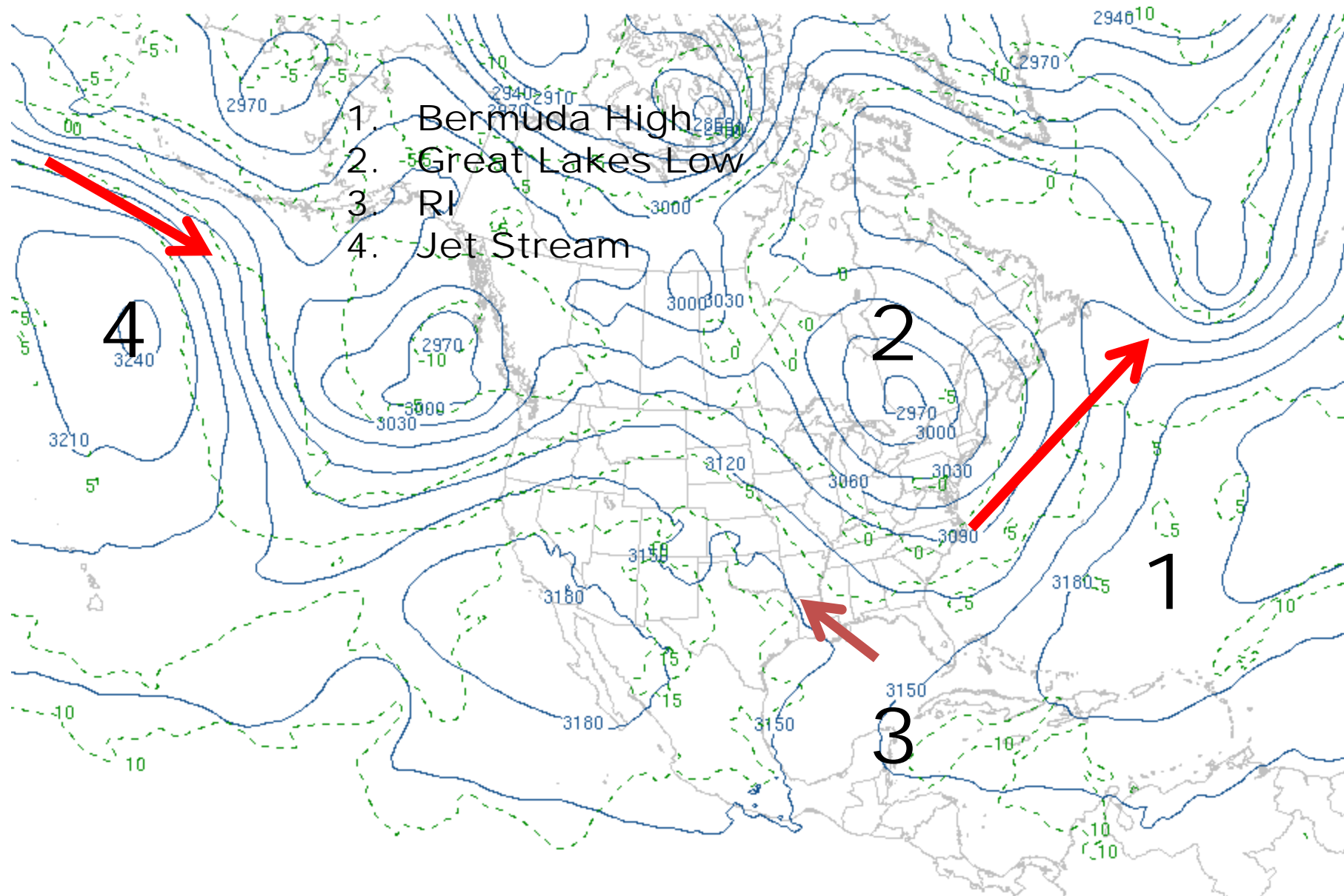
How Did The Severe Weather Happen?

1. Bermuda High
2. Colorado Low
3. RI
4. Jet Stream



12Z 05 Jun 2008 850 mb

University of Wyoming



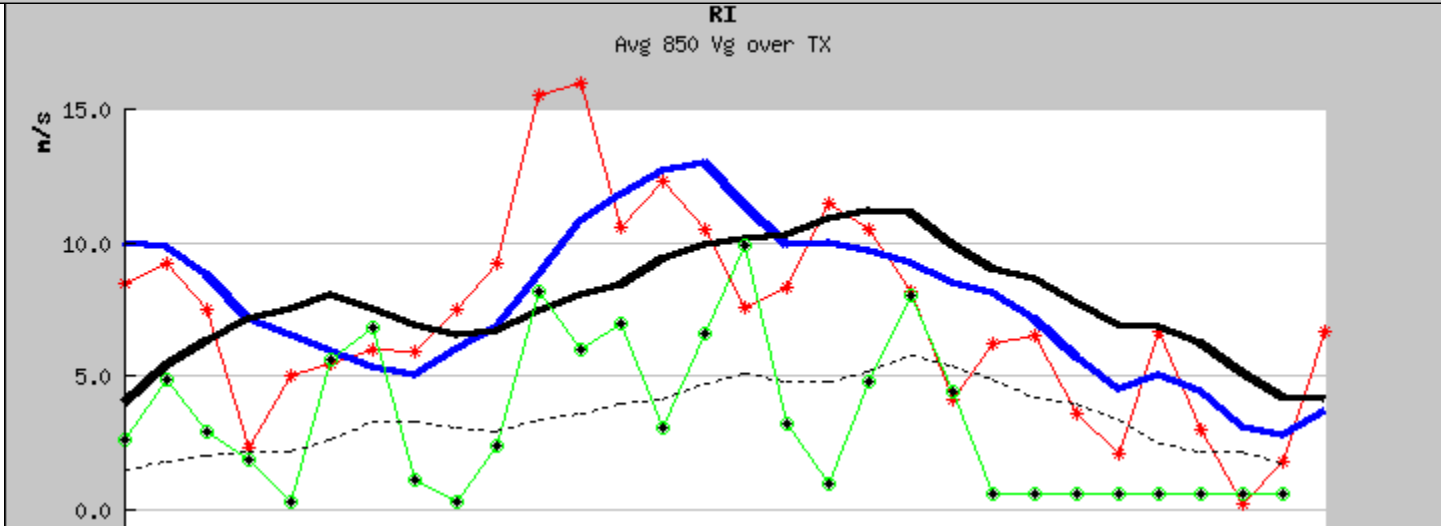
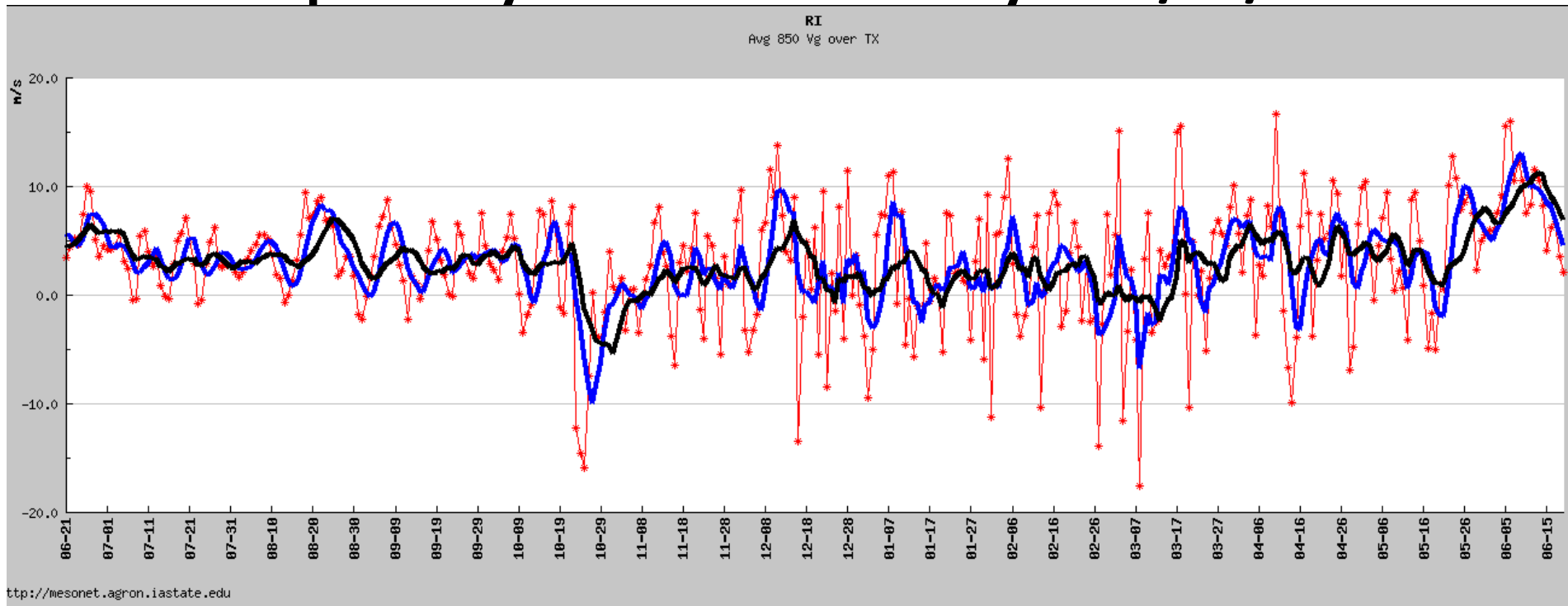
1. Bermuda High
2. Great Lakes Low
3. RI
4. Jet Stream

12Z 19 Jun 2008 700 mb

<http://weather.uwyo.edu/upperair/uamap.html>

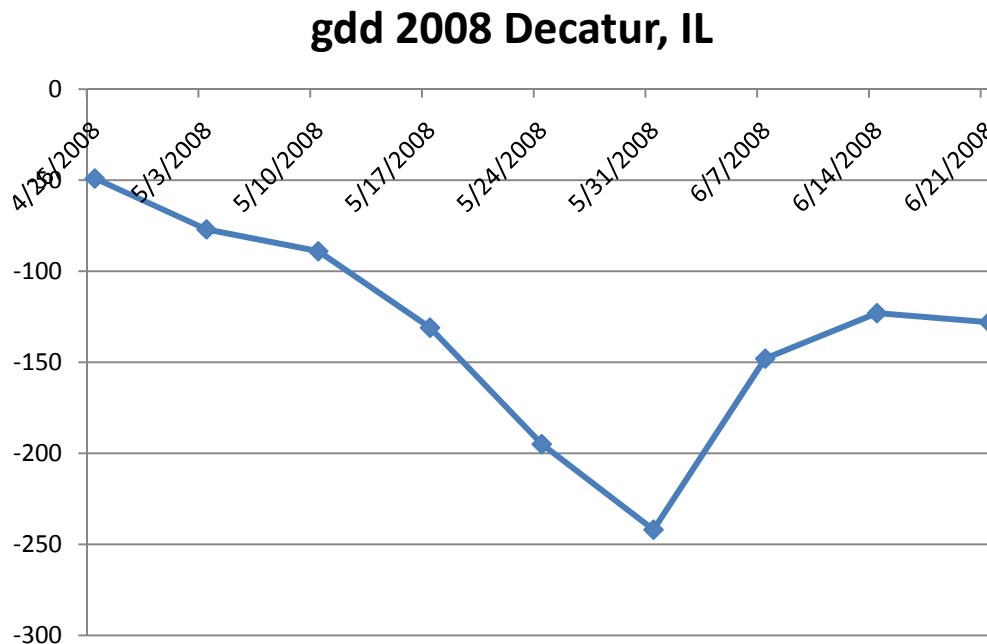
University of Wyoming

RI past year & 30-day 24/6/08



Growing Degree Days

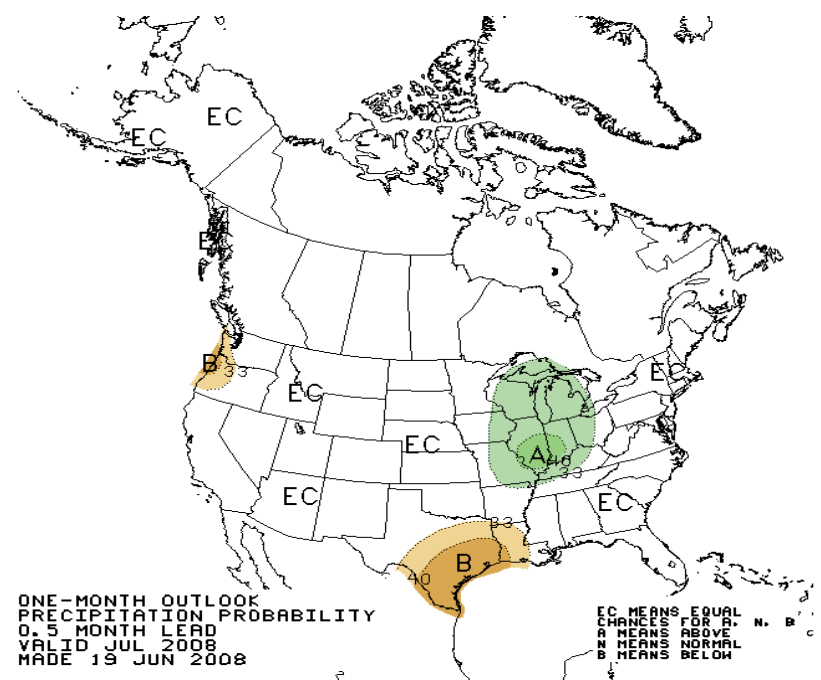
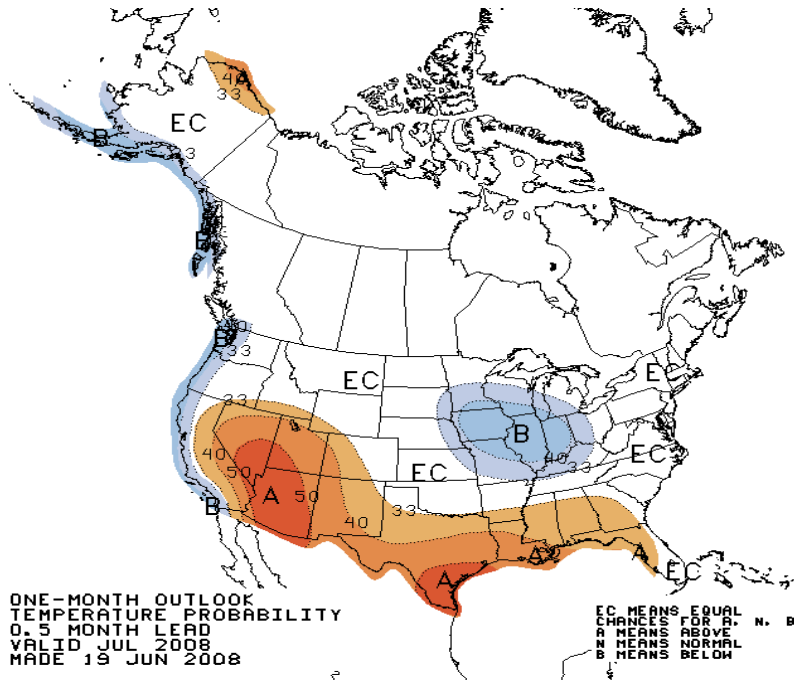
- Slightly above normal accumulation of growing degree days is a desirable thing for corn before the appearance of tassels.
- Temperatures in the 1st two weeks of June averaged above normal and near normal during the past week. The outlook is for above usual temperatures during the next two weeks.
- Decatur, IL is typical of the pattern of much of the Corn belt in that it shows some recovery from the deficit of growing degree days (about -250 in this case) during the past 3 weeks.



Not Comparable to 1993

- Other than the loss to direct inundation the crop situation in 2008 cannot reasonably be compared to 1993 in any way.
- Some plants under strain from cold and wet conditions began to show the strain of insufficient water during the past week because of warm temperatures and full sunlight.
- A weather change to warm and dry is more likely to be damaging to yield following a cold and wet spring than during a normal year.

July: Cool & Moist?



Cool & Moist conditions in July & August would likely result in a near to possibly above trend corn yield for the US this year. However, as of this date the “best” estimate is still for slightly lower than trend yields (Corn 148 BPA , Soy 137BPA).

END

Dr. Elwynn Taylor

Extension Climatologist

Office Phone: (515) 294-1923

E-mail: setaylor@iastate.edu

Web Site: www.extension.iastate.edu/weather