

# THE CLOVERLEAF EXPRESS



Farm Safety Pre-School



Debbie Swanson  
PAGE COUNTY EXTENSION  
County Youth Coordinator  
[debra@iastate.edu](mailto:debra@iastate.edu)  
712-542-5171

## January 2012

Dear 4-H Families:

Happy New Year to everyone!

Hope you all had a wonderful Holiday and ready to start the new year!

There are lots of events for the new 4-H year, so read your newsletter carefully.

Sincerely,

Debbie Swanson  
County Youth Coordinator

### WHAT'S INSIDE:

Page County Beef Weigh-in  
Livestock Country of Origin Labeling  
4-H Night with the Lancers  
Girl Talk  
Babysitting Class  
Let's Cook  
State 4-H Recognition 2012 Materials  
Page County Swine Weigh-in  
State Recognition Interviews  
Calendar

Farm Safety Pre-School



**4-H**  
GROWING TOGETHER

**IOWA STATE UNIVERSITY**  
University Extension

PAGE COUNTY EXTENSION 311 E. WASHINGTON ST., CLARINDA, IA | 712-542-5171 | M-F 8 A.M. TO 4:50 P.M.



## Page County Beef Weigh-in

The Page County 4-H Beef Weigh-in will be held **December 30**. 4-Hers who only want to have their calves tagged and weighed please come from 10:00 to 11:00 a.m. If a 4-Her wants to nominate a calf for State Fair or Ak-Sar-Ben, please come from 11:00 a.m. to 1:00 p.m.. No calves will be nominated for State Fair or Ak-Sar-Ben before 11:00 a.m. Market animals nominated for State Fair will have a retinal image taken.



Remember to bring your Livestock Country of Origin Labeling with you. These need to be kept on file by you for two years.

---

## Livestock Country of Origin Labeling

Remember to bring your Country of Origin Labeling with you to weigh-in. This went into effect September 2008.

4-Hers who raise their own livestock for their projects need to complete an affidavit and keep it on file for a minimum of two years. In case of an audit, 4-Hers can provide authorities with this affidavit along with other documents they may request.

4-Hers who purchase their livestock from others must have the producer fill out the affidavit and give it to the 4-Her. The 4-Her must keep the affidavit on file for a minimum of two years.

4-Hers must give the Extension office a copy by December 30, your calf will not be weighed without the affidavit. You may bring it to weigh-in

There is a copy included in this newsletter.

---

## MISSION STATEMENT

4-H EMPOWERS YOUTH TO REACH THEIR FULL POTENTIAL WORKING



## Girl Talk

Girl Talk is a program designed to facilitate communication between fifth and sixth grade girls and their mothers. It is a series of four sessions.

**January 4**—Mothers only or female adult

**January 11**—Mom and daughter or other female adult

**January 18**—Mom and daughter or other female adult

**January 25**—Mom and daughter or other female adult

Why Come? These are trying times for parents—especially parents of pre-teens. They are trying to understand what is happening to their bodies,

what guidelines to follow and how to respond to negative messages surrounding them.

Cost for the program is \$20 and is limited to 16 participants. The deadline is **December 30**.

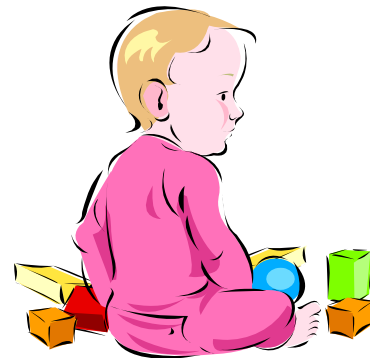



---

## Babysitting Class

Babysitting classes will be offered at the Page County Extension office on January 17, 24, and 31 from 6:00 to 8:00 p.m. Participants will learn ages and stages of children, first aid, nutritious snacks, and how to be a good sitter. The class is open to fifth grade and up.

Cost for the course is \$20. Please call the Page County Extension office at 712-542-5171 or toll free 877-596-7243 to pre-register. You must be pre-registered by January 10.




---

## Let's Cook

Did you know there is a Food club in Page County?! We meet on early out days beginning January 18 from 2:00 to 3:30 p.m. in Wibholm Hall at the Page County Fairgrounds.

We will be baking, making soups, breads, snacks, learning how to measure and plan meals.

See the flyer enclosed. The deadline is **January 11**.



## 4-H PLEDGE

I PLEDGE MY HEAD TO CLEARER THINKING, MY HEART TO GREATER LOYALTY, MY HANDS TO LARGER SERVICE,  
AND MY HEALTH TO BETTER LIVING, FOR MY CLUB, MY COMMUNITY, MY COUNTRY, AND MY WORLD.



## 4-H Night with the Lancers

February 3 is the deadline to pre-purchase your tickets. Please contact the Page County Extension office if you are interested. See the enclosed flyer for more details.

## State 4-H Recognition 2012 Materials Posted

State 4-H Recognition materials are now posted on the web. Opportunities that require state applications include: Iowa 4-H Youth Tech Team, State 4-H Council, State Project Awards, National 4-H Congress, and National 4-H Conference. Applications are due on site or postmarked no later than **February 1** to the State 4-H office.

[www.extension.iastate.edu/4h/teens/awards.htm](http://www.extension.iastate.edu/4h/teens/awards.htm).

Applicants will participate in an interview on **Saturday, March 24** in Ames.

Link for information is <http://>

### MARCH EVENTS

## Page County Swine Weigh-in

Page County 4-H Swine Weigh-in will be March 24 from 10:00 to 11:30 a.m. at the Page County Fairgrounds, so mark your calendars!

## State Recognition Interviews

**March 24 will be the interviews for State Recognition.**

## Game of the Month—Santa's Helpers

### What you Need

Party favors                      Box                      Yarn  
Wrapping paper                  Tape

each pair.

### Instructions

1. To set up, put out two party favors, one box, a sheet of wrapping paper, tape, and yarn for

2. Each team must race to wrap the favors in the box and tie a bow. The catch? Each player must hold one hand behind his or her back, an impediment that makes it necessary for partners to communicate and work together. The first team to finish wins the gift.

## 4-H PLEDGE

I PLEDGE MY HEAD TO CLEARER THINKING, MY HEART TO GREATER LOYALTY, MY HANDS TO LARGER SERVICE, AND MY HEALTH TO BETTER LIVING, FOR MY CLUB, MY COMMUNITY, MY COUNTRY, AND MY WORLD.



# Calendar

## JANUARY

**January 4**—Girl Talk, Extension office

**January 5**—Pre-purchase 4-H Night with the Lancers tickets deadline

**January 10**—Pre-registration for Babysitting Class Due

**January 11**—Pre-registration for Food Club Due

**January 11**—Girl Talk, Extension office

**January 15**—SESS, 2:00 p.m., Conservation Building

**January 17**—Babysitting Class, 6:00 to 8:00 p.m., Extension office

**January 18**—Food Club meeting, 2:00-3:30 p.m., Wibholm Hall

**January 18**—Girl Talk, Extension office

**January 24**—Babysitting Class, 6:00 to 8:00 p.m., Extension office

**January 25**—Girl Talk, Extension office

**January 31**—Babysitting Class, 6:00 to 8:00 p.m., Extension office

## FEBRUARY

**February 1**—State Recognition Applications Due to State 4-H office

**February 19**—SESS, 2:00 p.m., Conservation Building

## MARCH

**March 24**—State Recognition Interviews

**March 24**—4-H Swine Weigh-in, 10:00 to 11:30 a.m., Page County Fairgrounds

## WANT TO KNOW MORE?

FIND US AT: [EXTENSION.IASTATE.EDU/4H/YOUR\\_COUNTY\\_NAME\\_HERE](http://EXTENSION.IASTATE.EDU/4H/YOUR_COUNTY_NAME_HERE)