

THE GARDENER'S DIRT

The Latest Scoop from the Scott County Master Gardeners

April 2011

City of Bettendorf Public Works Day (Recycle)

Submitted by Ed Sharkness, Committee Chair

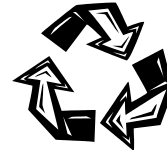
We support the City of Bettendorf Public Works Day (Recycle.) We educate the public regarding composting and answer questions with the portable horticulture clinic. This is a one day program.

Our next action day is Saturday, May 21, 2011. The location is inside the Bettendorf Public Works Building, located at 4403 Devils Glen Road. The building is set back one very long block behind the Post Office. The work shifts are from 9:00 a.m. to 11:00 a.m. and from 11:00 a.m. to 1:00 p.m. Travel time is additional. The maximum service hours available are the two shifts of two hours each plus travel time. Site preparation is also available.

To sign up, call Ed Sharkness (Committee Chair).

Activities are:

1. Hand out pamphlets
2. Manage the portable horticulture clinic.
3. Monitor the televised education.
4. Omnibus person.
5. Demonstrate model compost bins.



Garden Growers

Submitted by Julia Blazevic

Late last fall, The Garden Growers secured funding for a new **community/teaching/demonstration garden** to be built on the north side of the Extension's office. The new garden will be 40' wide and 80' long, and will be the only community/teaching/demonstration garden located in Bettendorf. It will have eleven, in-ground, 8'x14' plots, one 8'x8' plot, and eight, 4'x4' raised beds for community gardeners. Some of the raised beds will be wheel-chair accessible and some will be 18" tall and provide sitting surface for older gardeners. The garden will also serve as an outdoor classroom for gardening classes provided by ISU Extension staff and Master Gardeners. It will have all the elements of a well designed and executed community garden and will be used as a demonstration garden for groups and individuals who plan to start their own community garden, or just want to start a garden in their own yards.

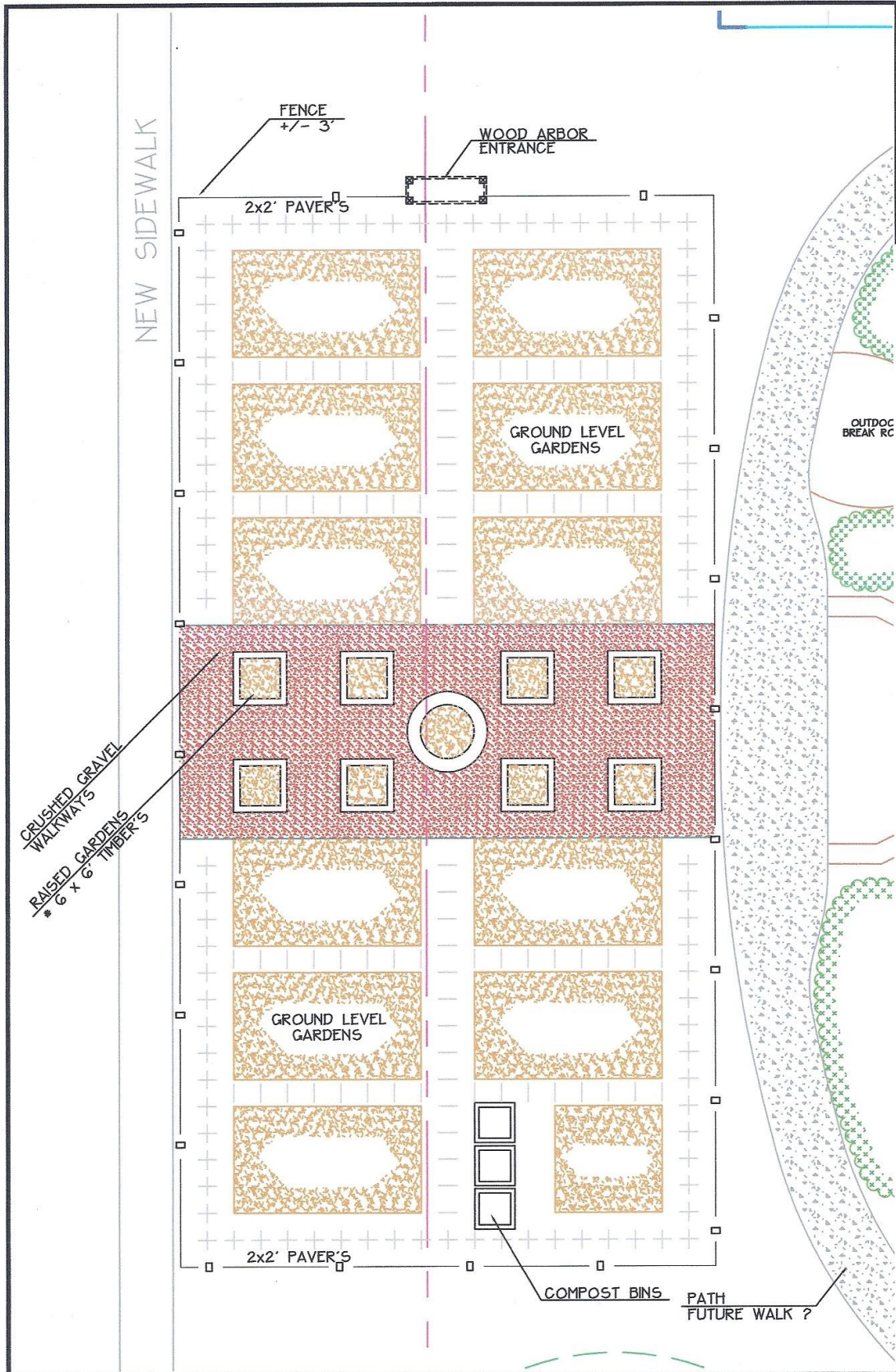
Aunt Rhodie's created the final plan based on Julia Blazevic's design and they will install the garden. The new garden will not disturb the already landscaped area on the north side of the office building. The Garden Growers would like Master Gardeners to support the garden by labeling the plants grown in the garden, including plants' botanical and common names as well as how they can be used in home gardens.

The construction of the garden will start as soon as the weather permits. There will be some mud and mess for about two weeks – at least that is what the landscaper who is going to do the work told us. But the result will be well worth it!

See landscape diagram on next page.

Our Mission

To provide home horticulture information and education to the citizens of Scott County consistent with Iowa State University recommendations. We also strive to increase members' knowledge of horticulture through educational programs.



NEW SIDEWALK

FENCE +/- 3

WOOD ARBOR ENTRANCE

2x2' PAVER'S

GROUND LEVEL GARDENS

CRUSHED GRAVEL WALKWAYS
RAISED GARDENS * 6" x 6" TIMBER'S

GROUND LEVEL GARDENS

2x2' PAVER'S

COMPOST BINS

PATH FUTURE WALK ?

OUTDOOR BREAK RC

THE DESIGN STUDIO AT
AUNT RHODIES
SCOTT COUNTY EXTENSION
DATE: 2008 DESIGNED BY: KEN PLANNED BY: KEN
1501 E. Grand St.
A LANDSCAPE DESIGN FOR
 150 - SCOTT COUNTY EXTENSION
 875 TANGLEFOOT LN. / BETT.



DRAFT

Office Guidelines

Submitted by Becky Bray, Scott County Extension Director

Thank you to all Master Gardeners for your time and expertise in volunteering for Extension. We appreciate you being a part of our organization and want to make your time in the office productive for both you and our staff. As I have talked with a few Master Gardeners lately, I find that we need to give you more information about working in our office. Here are a few items that I hope will be helpful to all of you.

Guidelines for use of the office by Extension Master Gardeners:

- Scheduling of rooms must go through our front desk. This will include the Cyclone Room, the Morrill Room and the Master Gardener Room. Please do not assume that space will be available for a meeting or committee meeting unless you schedule it. Since space is at a premium in our office, all three rooms are used for programming by others. We need the MG Room for other programs at times and don't wish you to arrive ready to use it and find it in use by others. Of course, the room is reserved for the Hort Clinic by your signups to work during April through October. Only staff may reserve a room – be sure to talk to Joy, Anne, Vicki, Duane or Becky.
- When using office space or coming in for a meeting, please be aware of other meetings going on or other work being done. Sometimes we schedule small meetings in the Cyclone Room when MGs already have the Morrill Room booked. If there are people in the Cyclone Room, please know that they are working.
- Here are the people you may interact with in our office and the work they do for Master Gardeners:
 - Joy VenHorst—answers calls and gives them to Hort Clinic, takes registrations, and assist with supplies needed. Advance notice of supply needs is appreciated.
 - Vicki Gall—prepares Gardener's Dirt, treasurer's report for the Board, screens volunteers working with youth, keeps database of volunteers current, answers questions about MG hours, and backup on phone.
 - Anne Guffey—backup on phone and fixes computer when broken.
 - Duane, Horticulturist—supervises the Master Gardener program and provides assistance for them, does orientation for new Master Gardeners and committee chairs, and serves as staff contact for MG Advisory Board.
 - Julia Blazevic, The Garden Growers Director—works with community gardening and planning.
 - Jen Best , Families, Youth and Communities Educator—supervises youth programming and assists with curriculum for Kid's gardening.
 - Becky Bray, Director—oversees the office and programs.

**News articles are needed for the Gardener's Dirt
Please have articles to the Extension Office by April 15th**



CEU Opportunities

Summer Webinar Series

All sessions are \$5.00 and held at the ISU Scott County Extension office from 6:30-8:30 p.m. Call the office at 359-7577 to register.

The first session, *Plant Communities of Iowa*, is scheduled for **May 24** and will discuss the history and relevance of native ecosystems across Iowa. Geology, soils, climate and human intervention will be included. Items regarding the culture of some of these plants will include discussions on how things like aspect, slope and soil types play a role in selecting proper plants for your sites. By learning some of these principles, participants will be better able to design their own landscapes using native plants. Suggested species of native plants for each plant community will be mentioned. The session presenter is Howard Bright of Ion Exchange, Inc., Harpers Ferry, Iowa.

Identification and Management of Invasive Woody Plants in Iowa is scheduled for **June 28**. This session will include a discussion of our most notorious invasive woody plants, their potential impacts, and the life history characteristics of woody plants that increase the likelihood of their invasiveness. In addition, we will discuss how a specific invasive plant (common buckthorn) contributes to the establishment of other invasive pests, and a citizen-scientist project that participants can join to help manage buckthorn. Two presenters from Iowa State University – Jan Thompson, Department of Natural Resource Ecology and Management, and Matt O’Neal, Department of Entomology – will conduct this session.

Tallgrass Prairies of Iowa is the topic of the third session on **July 26**. During this session, the history and reach of the Tallgrass Prairie Center located in Cedar Falls, Iowa, will be displayed. The mission of the Tallgrass Prairie Center is to ‘develop research, techniques, education and Source Identified seed for restoration and preservation of prairie vegetation...’. Daryl Smith, from the Tallgrass Prairie Center and University of Northern Iowa, is the presenter.

On **August 23**, *Native Friends and Invading Forces*, the final session, will highlight the importance of native species and discuss the problems and related issues with invasive species in Iowa. An attempt will be made to define the elusive terms “native” and “invasive.” Participants will learn about appropriate and inappropriate uses of native materials, and also tips on selection of plant materials for use in landscapes with a better chance of not overstaying or overgrowing their welcome. Because gardening success is often largely dependent on choosing materials to fit planting sites that are adapted, an exploration of reasonable site adaptations will be included in the session. The program will help tie together information that has been presented in earlier programs in the series and will be presented by Rich Pope, Harrison County Extension Coordinator from Logan, Iowa.

Growing Native Series

A seminar series focusing on learning about growing native plants in our landscape. Each class will discuss a variety of plants, the environments they thrive in, the positive impact they have on our environment, and how they can be used to bring beauty to our gardens with minimal maintenance.



All classes are held from 6:30 - 9:00 p.m. at the Iowa State University Scott County Extension Office. The cost is \$5 and refreshments will be provided. Please call (563) 359-7577 to register.

April 5 - Native Wildflowers

Master Gardener, Wendi Laake will present our native wildflowers just as the spring wildflower show is about to begin. Learn the variety of plants found from the woodlands to the prairies.

April 12 - Top Native Plants to Use in Your Landscape

Master Gardener, Dan Mays will bring his wealth of knowledge and experience in growing a wide variety of native grasses and flowers and describe the best performers for our area. Dan will show how natives can be effectively used within the home landscape.

April 19 - Gardening for Butterflies and Hummingbirds

Master Gardener, Ray Wolf will show native butterflies and hummingbirds and the plants they enjoy visiting in our yards. Requirements for developing your own butterfly and hummingbird garden, including the use of native species, will be discussed.

April 26 - Rain Gardens

Master Gardeners, Dan Mays and Ray Wolf will team up to describe the benefits and how-to for developing a rain garden in your yard. The use of top performing native species will be emphasized. The presentation will also include a tour of an actual working rain garden in place at the Extension Office.

Upcoming Classes & Events:

CEU's	Course #	Topic	When	Where	Cost	Instructor	Registration Information
2	-	Creative Gardening Series It Takes a Garden	April 4, 2011 6:30-8:30 p.m.	Kirkwood Comm College Cedar Hall Room 234 6301 Kirkwood Blvd SW Cedar Rapids, IA	Free	Elvin McDonald	Walk in
2.5	-	Growing Native Series Native Wildflowers	April 5, 2011 6:30—9:00 p.m.	ISU Scott County Extension 875 Tanglefoot Lane., Bett	\$5.00	Wendi Laake	359-7577 ISU Scott County Extension
2	-	Project Green Garden Forums "Conifer Companions"	April 6, 2011	Iowa City Public Library Room A, 123 South Linn St Iowa City, IA	NC	Gary Whittenbaugh	No registration required
2.5	-	Growing Native Series Top Native Plants to Use in Your Landscape	April 12, 2011 6:30—9:00 p.m.	ISU Scott County Extension 875 Tanglefoot Lane., Bett	\$5.00	Dan Mays	359-7577 ISU Scott County Extension
2	-	Creative Gardening Series Top Ten Gardening Blunders	April 13, 2011 6:30—8:30 p.m.	Kirkwood Comm College Cedar Hall Room 234 6301 Kirkwood Blvd SW Cedar Rapids, IA	Free	Don Engebretson	Walk in
NA	-	Introduction to Digital Nature Photography	April 16, 2011 9:00 a.m.—3:30 p.m.	Nahant Marsh Education Center	TBA	Bob Bryant	Continuing Ed Class EICC
2.5	-	Growing Native Series Gardening for Butterflies and Hummingbirds	April 19, 2011 6:30—9:00 p.m.	ISU Scott County Extension 875 Tanglefoot Lane., Bett	\$5.00	Ray Wolf	359-7577 ISU Scott County Extension
2	-	Creative Gardening Series 20 of My Favorite Native Trees & Shrubs	April 20, 2011 6:30—8:30 p.m.	Kirkwood Comm College Cedar Hall Room 234 6301 Kirkwood Blvd SW Cedar Rapids, IA	Free	Michael Yanny	Walk in
2.5	-	Growing Native Series Rain Gardens	April 26, 2011 6:30—9:00 p.m.	ISU Scott County Extension 875 Tanglefoot Lane., Bett	\$5.00	Dan Mays Ray Wolf	359-7577 ISU Scott County Extension
-	-	ISU Scott County Extension Master Gardener's Plant Sale	May 14, 2011 9:00 a.m.—2:00 p.m.	ISU Scott County Extension 875 Tanglefoot Lane., Bett	NC	NA	NA
-	-	City of Bett Public Works Day (Recycle)	May 21, 2011 9:00 a.m.	Bettendorf Public Works Bldg 4403 Devils Glen Rd., Bett	NC	NA	359-5-75.77 ISU Scott County Extension
2	-	Summer Webinar Series Plant Communities of Iowa	May 24, 2011 6:30—8:30 p.m.	ISU Scott County Extension 875 Tanglefoot Lane, Bett	\$5.00	Howard Bright	359-7577 ISU Scott County Extension
2	-	Summer Webinar Series ID & Management of Invasive Woody Plants in Iowa	June 28, 2011 6:30—8:30 p.m.	ISU Scott County Extension 875 Tanglefoot Lane, Bett	\$5.00	Jan Thompson Matt O'Neal	359-7577 ISU Scott County Extension
2	-	Summer Webinar Series Tallgrass Prairies of Iowa	July 26, 2011 6:30—8:30 p.m.	ISU Scott County Extension 875 Tanglefoot Lane, Bett	\$5.00	Daryl Smith	359-7577 ISU Scott County Extension
3	-	Invasive Plant Field Day	August 6, 2011 9:00 a.m. to noon	Black Hawk Historic Sit Singing Bird Lodge	\$5.00 (included in the March 10 workshop fee)	Various	359-7577 ISU Scott County Extension
2	-	Summer Webinar Series Native Friends and Invading Forces	August 23, 2011 6:30—8:30 p.m.	ISU Scott County Extension 875 Tanglefoot Lane, Bett	\$5.00	Rich Pope	359-7577 ISU Scott County Extension
*	-	2011 International Master Gardener Conference	October 11-14, 2011	Charleston Convention Center Charleston, West Virginia	TBA	Various	Info at http://imgc.ext.wvu.edu/

* To be determined by sessions attended. Submit proof of sessions attended to the ISU Scott County Extension Horticulturist.

To Be Picked Up:

The following have items to be picked up at the Extension Office.

Judy Blake	Laurie Boussmaerie Elliott
Karen Crawford	Michele Dane
Becky Danner	Sally Freeman
Bob Krush	Naomi Haertjens
Melanie Hayes	Matt Hogan
Ellen Kelley	Kevin McMahan
Joani Nagle	Jacki O'Donnell
Elena Robertson	

Change for 2011:

Master Gardeners who work with youth only at the fair will not need to be screened in the future. They are considered episodic volunteers and do not have opportunity to be alone with any child.

Those working other programs with children, such as the Kids Garden Committee will still need to be screened.

The Gardener's Dirt

Scott County Extension
875 Tanglefoot Lane
Bettendorf, IA 52722-1690
(563) 359-7577 Fax (563) 355-6569
www.extension.iastate.edu/scott

Board Briefs

Submitted by Bob Cohee

The Master Gardener Advisory Board held its monthly meeting March 3rd at the Extension Office. There were eight members present and five guests.

Chuck Doss gave the treasurer's report and noted that the printing bill for the Perpetual Calendars had been paid. The Calendar Committee has done an outstanding job.

The Mother's Day baskets and plant sale were discussed extensively.

There is one Board position open. The Volunteer Coordinator position is still open.

A booth at the Freight House Farmer's Market was then discussed.

Duties and responsibilities of committee chairs were gone over with the Chairmen that were present.

A full set of minutes is available at the Extension Office. The next meeting will be April 7th.

