



Clover Leaflet

Volume 07, Issue 12

November 30, 2007



DATES TO REMEMBER!

Member and Leaders

There should be subtle changes to the newsletter over the next few months. Our new CYC is in charge and has been charged with improving how I have done it for the last 5 years.

Our beef weigh-in is a week early this year. Market beef project members must note this change. It is scheduled for December 29, 9-Noon, at the Fairgrounds. As we are sharing the retinal imaging equipment with four other counties, we have adjusted our weigh-in date so that we can have the equipment available. We will no longer take DNA or nose prints for the State Fair, only retinal images. We must still take DNA hair samples for Ak-Sar-Ben however.

When reading the fair deadlines for 2008, **be sure to read the second paragraph carefully.** If you cannot decide on a beef heifer to be shown as market or breeding, you can put the decision off until fair entry time by weighing her in on December 29th and ID'ing her on May 15th. Also note that the May 15th date is absolute, NO animals can be ID'ed late in 2008.

Remember, after the 14th we update our Newsletter mailing list according to those we have enrolled. If you have not re-enrolled, you will not be getting a newsletter in January.

Sincerely,

Glen Easter

Glen Easter
Clarke County Extension Education Director

December 10th - 4-H Club Officer Training, American State Bank, 4-6 p.m.

December 14th—Deadline for getting enrollments (new and re-) into the Clarke County Extension Office

December 29th—Beef Weigh-In, 9-Noon, Fairgrounds.

February 3rd—Tentative start date for Dog Classes, Osceola Vet Clinic.

February 18th— FSQA, See page 3.

March 7th & 17th--FSQA, See page 3.

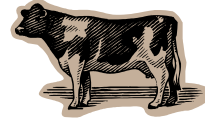
April 28— FSQA, See page 3.

June 4th & 23rd—FSQA, See page 3.



Beef Weigh-In is Scheduled for December 29th

The 2008 Clarke County Fair beef weigh-in will be **December 29th**, 9-Noon at the Fairgrounds.



Remember that you **must weigh-in all of your market animals (beef, swine, sheep and goats) in Clarke County** at the appropriate weigh-in date and location. No transfers from other counties are accepted. If unable to make the weigh-in, someone else must weigh the animal in and bring the proper affidavit to the weigh-in.

Beginning in 2009, nose prints and DNA samples will no longer be accepted by the Iowa State Fair for beef cattle, sheep, and goats. Only retinal images of each animals eyes will be accepted to verify that the animal weighed in is the same animal being exhibited at the State Fair. Clarke county will begin retinal imaging at the 2008 beef weigh-in. Ak-Sar-Ben will be doing DNA only for 2008, and it is expected for them to begin taking retinal images in 2009.

Pick up the forms and ear tags in advance.

Have your calves tagged and forms completed before the 29th.

This speeds the process up enormously.

**Don't forget to get your ear tags! Our office will be closed
December 24, 25, 31 and January 1st!
Plan accordingly!**

And Speaking of Retinal Imaging ...

In anticipation of the 2009 deadline requiring all State Fair bound market beef, sheep and goats to submit retinal images instead of nose prints and DNA hair samples, the Clarke County Fair Board co-purchased the equipment to begin in 2008. The equipment was purchased with Lucas, Wayne, and Decatur counties. Each animal's eye has a unique blood vessel pattern on their retina. The camera captures a photo of that vessel pattern. The pattern is there at birth and does not change during the life of the animal. Both eyes are imaged, and a photo of the animal's ear tag is taken. Although, like nose prints, there is a knack to taking the images, the technology is quite simple and straight forward.

Retinal imaging will be used at the **December 29th beef weigh-in** for those market animals going to the State Fair. For those animals going to Ak-Sar-Ben we must still take DNA hair samples instead of retinal imaging. There will be no nose prints taken. The images will be taken by Glen and/or fair board members. Glen attended training at the McNay Research Farm in November.

This process is for state fair bound market animals only. County fair market animals will only be weighed. The charge for imaging process is the same as was for nose printing and DNA, \$5 per animal. There is the additional \$1 charge per animal for Ak-Sar-Ben as in the past.



The retinal image is real time. When an animal is slated for rechecking at the state fair, the image can be taken and immediately compared. There is no waiting for lab work to be completed as there was with DNA.

FSQA Training Time Again—Register Early

The **Food Safety Quality Assurance (FSQA)** programs will certify 4-H youth for beef, pork, dairy (cattle and goats), sheep, poultry, meat goats, and rabbits in 2008.

With FSQA, junior exhibitors (9-11 years of age) will need to be certified each year. Intermediate (12-14) and Seniors (15-18) will be able to test out if they choose to. The program is age driven as of January 1, each year. Testing out is good for the period the exhibitor is an intermediate member or senior member. This means that if you test out your first year as an intermediate, the certification is good for the three years you are of intermediate age. Then, if you successfully retest again your first year as a Senior member, you will be certified for the three years you are a senior member. Once you turn 19, the system will kick you out as a youth and (even though you might still be in high school) you must certify as an adult. Testing out is not an available option to junior members.

Please note the age specific groups, we will adhere to the age limits. The training sessions will be adapted to the age group. Registration is required. There is a maximum of 15-20 4-Hers per session.



Training will be conducted in Clarke County on the following dates:

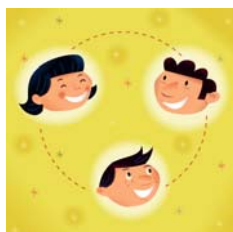
- 2/18 Jr. Exhibitors, Osceola, American State Bank, 7 p.m.
- 3/7 Int./Sr. Exhibitors, Murray High School Vo-Ag Room, 1:00-3:00 p.m.
- 3/17 Int./Sr. Exhibitors, Clarke Community School, Vo-Ag Classroom, 3:30-5:30 p.m.
- 4/28 Jr. Exhibitors, Osceola, American State Bank, 7 p.m.
- 6/4 Clarke County Test-Out, Osceola, Extension Office, 1 p.m.
- 6/23 Jr. Exhibitors, Osceola, American State Bank 7 p.m.

I will schedule a different test-out time for a group of Intermediate/Seniors.

Club Officer Training—December 10th, 2007

Club officer training will be held on Monday afternoon, December 10th. Hopefully this is a more accommodating time than a weekend afternoon, so that attendance may be higher than previous years.

Training will be from 4-6 p.m. at American State Bank. No need to worry about planning dinner around this, we will be serving pizza! Programming will include overall officer leadership activities, as well as specific training for the positions of president, vice-president, secretary, treasurer, and historian.



Deadlines for 2007-08 4-H Year & 2008 Clarke County Fair

A 4-H/FFA member **must weigh-in all of their market animals (beef, swine, sheep and goats) in Clarke County** at the appropriate weigh-in date and location. No transfers from other counties are accepted. If unable to make the weigh-in, someone else must weigh the animal in and bring the proper affidavit to the weigh-in.

All breeding beef and dairy, breeding sheep, breeding goats, dogs (obedience show) and horses **must be properly identified by May 15, 2007**. Breeding swine must be properly identified by April 30, 2008. Market animals are identified at the respective weigh-in dates. If female beef, sheep, swine and goats are weighed-in and breeding ID'ed by the deadlines the exhibitor can choose which class they desire at the time of fair entry (July 1, 2008)). Identification deadlines are absolute; there is **no late** identification of beef, dairy, sheep, goats, dogs, and horses. Rabbits and poultry are identified at fair entry time.

A 4-Her must **join 4-H by the 4:30 p.m., April 1st**, unless the 1st is on a weekend and then the deadline is the previous Friday at 4:30 p.m.

Calendar Note: April 1st, 2008 is on a Tuesday.

A 4-Her must **ID their breeding swine by April 30th**, unless the 30th is on a weekend and then the deadline is the previous Friday at 4:30 p.m.

Calendar Note: April 30, 2008 is on a Wednesday.

A 4-Her must have **signed up for their projects by May 15th**, unless the 15th is on a weekend and then the deadline is the previous Friday at 4:30 p.m.

A 4-Her **must ID all of their breeding cattle, sheep and goats, horses, and dogs by May 15th**, unless the 15th is on a weekend and then the deadline is the previous Friday at 4:30 p.m. Clarke County 4-H and FFA members must turn the IDs into the Clarke County Extension Office. The animals must be ID'ed through the Clarke County Extension Office, no transfers are accepted. **Identification deadlines are absolute; there is no late identification allowed.**

A 4-Her **must be transferred into the county and/or between clubs by May 15th**, unless the 15th is on a weekend and then the deadline is the previous Friday at 4:30 p.m.

Calendar Note: May 15, 2008 is on a Thursday.

Fair (State and County) entries (4-H and FFA) are due in the Clarke County Extension Office on July 1, unless the 1st is on a weekend and then the deadline is the previous Friday at 4:30 p.m.

Calendar Note: July 1, 2008 is on a Tuesday

Late entries will be accepted up to but no later than July 8th. unless the 8th is on a weekend and then the deadline is the previous Friday at 4:30 p.m. Late entries will be assessed the regular entry fee and a \$5 penalty fee per species with no premium to be paid.

Entries later than July 8th would be handled on a case by case basis by the 4-H Leaders/FFA Advisors/Fair Board/County Extension Education Director.

Calendar Note: July 8, 2008 is on a Tuesday

Attention! There will be no calls made in 2008 by the Extension Office to remind 4-Hers that the deadline is approaching and they have not entered their animals. If you miss the deadline, you are not showing at the fair.

If a 4-H/FFA member physically moves into Clarke County from other than an adjoining county after weigh-in or **between May 15th and July 1st**, thus making showing in their old home county a hardship, **transfer of membership will be handled on a case by case basis** by the 4-H Leaders/FFA Advisors/Fair Board/County Extension Education Director.

A 4-Her **must attend at least 4 club meetings** during the 2007-08 club program year (September 2007 through the Saturday before the fair begins) prior to the county fair. (This is the reason for the April 1st joining deadline.)

4-H and FFA members **must sign the Code of Ethics at fair entry time.**

Keep in mind that youth can join 4-H at anytime, but to be able to show at the 2008 Clarke County 4-H/FFA Fair the above deadlines have to be met.



Record Book Training for 4-H Club Leaders Held on Nov. 20th

On November 20th, we held a record book training meeting for club leaders. In addition to generating ideas about how to increase completion of record books, Karen Pattison gave an overview of record book forms and how to complete them online. A large part of the meeting was spent discussing the concept of creating an advisory committee, and also coming up with some sort of awards/recognition ceremony for 4-Hers.

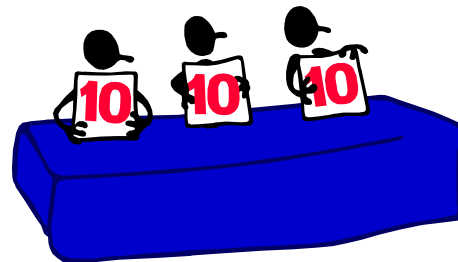
If you were unable to attend the meeting, Kate has extra informational packets and resources for you! Please stop by the office and she will be happy to go over these with you and/or discuss any ideas you may have regarding these issues. She will be in the office Mondays, Tuesdays, and Wednesdays from 1:00-4:30, and looks forward to meeting and visiting with you!

Clarke County Extension
Iowa State University Extension
154 West Jefferson Street
Osceola, Iowa 50213-1286

4-H Judges Training Scheduled

4-H Judges Trainings have been scheduled for this spring. Please note these dates on your calendars and we hope that you can plan to participate on a convenient date. Registration information is available at:

www.extension.iastate.edu/4H/publicjudgesinfo.html



Remaining Trainings:

Southwest:—Saturday, March 29, 2008—Creston High School

Northwest:—Saturday, April 5, 2008—Storm Lake Middle School

Central:—Saturday, April 19, 2008—Extension 4-H Youth Building

Volunteer Leader Training for 2008

Our spring leader meeting has been scheduled for February 26th at 7:00 p.m. Please mark your calendars!

Some topics to be discussed at this meeting:

- Development of a 4-H advisory council
- Development of criteria for youth to use in creating/
updating their record books

Plan to come and bring your great ideas!

