



# Clover Leaflet

Volume 07, Issue 1

December 31, 2006



## The New Year is Here!

The New Year brings a change in our office. A standard fixture at the front desk's last day will be the 29th. Although just a phone call away for Boni and I, I am sure we will struggle at times to keep everything straight. I want to thank everyone that was able to stop by on the 20th to bid Joyce a farewell and best wishes in retirement.

This newsletter is a lot of reminders. We still have 4-Hers who have not re-enrolled. If you have not re-enrolled this is your last newsletter.

Beef project members, weigh-in is just around the corner, get your tags and be prepared.

*Glen Easter*  
Glen Easter

## 2007 4-H News



**January 6th**—Beef Weigh-In, 9-Noon, Fairgrounds. Snow date is January 13th.

**January 25th**—4-H Leader Training Meeting, Extension Office, 7 p.m.

**February 4th**—Dog Classes Start, Osceola Vet Clinic

**February 7th & 15th**—FSQA, See Nov & Dec NL's for details.

**March 12th**--FSQA, See Nov & Dec NL's for details.

**April 4th**—FSQA, See Nov & Dec NL's for details.

**April 7th**—Swine Weigh-In

**May 4th**-Sheep & Goat Weigh-In

**June 13th**—FSQA Test-Out See Nov & Dec NL's for details.



## Is a 4-H Friend Missing the Newsletter ?

**First and foremost a special thanks to all of the families that are re-enrolled!! Both Joyce and Boni have been very pleased with the re-enrollments this year. We do not want anyone to miss out on the information in the newsletter or a single club meeting.**

**BUT,**

**If you have not re-enrolled, this will be your last Newsletter. At the end of January we send the NL to only those families we have re-enrolled!**

Each member (family) must complete the re-enrollment forms you received in the October newsletter. If yours is missing or you need more forms let us know or ask your leader.

For the complete procedure check October's or November's Newsletter, or just stop by the Extension Office.

Any member having trouble paying the membership fee or for publications, talk to your leader about assistance

## Beef Weigh-In is Scheduled for January 6

The 2007 Clarke County Fair beef weigh-in will be January 6, 2007, 9-Noon at the Fairgrounds. The snow/ice date is January 13th, 9-Noon.

Remember that you **must weigh-in all of your market animals (beef, swine, sheep and goats) in Clarke County** at the appropriate weigh-in date and location. No transfers from other counties are accepted. If unable to make the weigh-in, someone else must weigh the animal in and bring the proper affidavit to the weigh-in.

Also remember that **if you plan to show at the Iowa State Fair and/or Aksarben you must get a nose print and DNA sample taken.** There is a fee for each of these shows. The day will most likely be cold and hectic. Although you will be asked 2-3 times, you must remember to complete the proper forms and pay the fee if you plan to show at the Iowa State Fair and/or Aksarben! There will be signs posted to remind of all this.

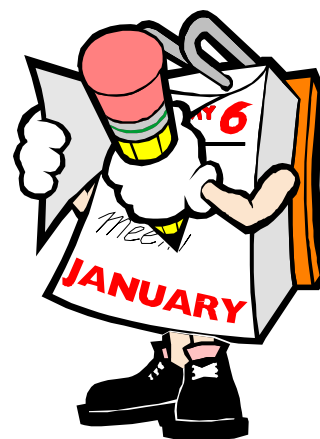
**Pick up the forms and ear tags in advance.**

**Have your calves tagged and forms completed before the 6th.**

This speeds the process up enormously.

**Don't forget to get your ear tags! Our office will be closed December 25, 26, and January 1st!**

**Plan accordingly!**



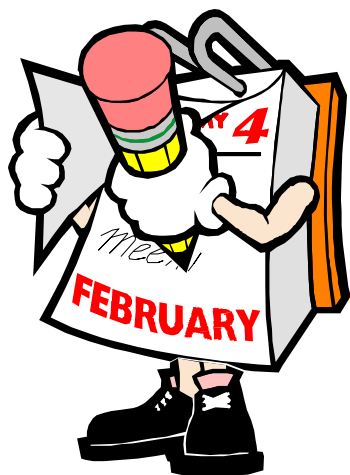
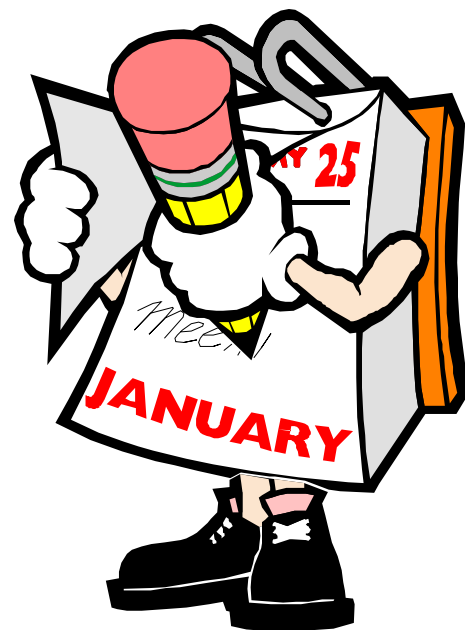
## Don't Forget — Volunteer Leader Training

Our first training session and leader meeting will be held January 25th, 7-9 p.m. at the Clarke County Extension Office. This training is required for our club and project leaders.

As a club leader, you are a key to our 4-H program. In your volunteer role, you are making a significant contribution to our communities by helping young people grow and develop in positive ways. All 4-H club leaders and project leaders (such as dog, horse, beef, shooting sports and sheep) will be required to participate in two volunteer training opportunities throughout the 4-H year.

The leader training portion of this meeting will focus on:

- creating safe environments for kids,
- how to prevent the disease *lacks of focus communicato*, and
- how to create an extraordinary learning opportunity for club members and families.



## Reminder that Dog Obedience Classes Are Scheduled To Begin

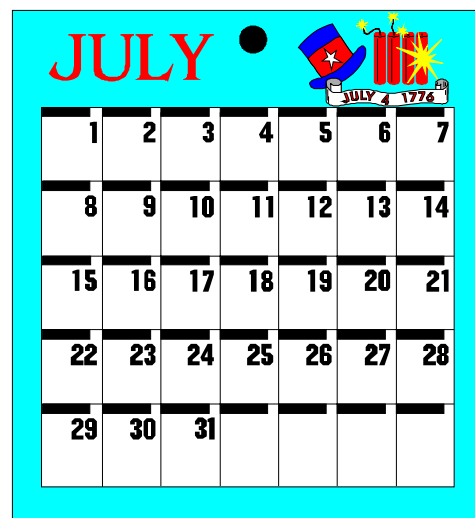
The 2007 Dog Obedience Classes will begin February 4, 2007. The classes will be located at Osceola Vet as in the past. Have all of your dog's shots up to date before classes begin.

We will include more information in our next newsletter and the leaders will also be sending more information later. If you have questions, please contact Ronda Schrodt at 447-2346, Leslie Dorland at 342-3021 or Nancy Crabtree at 449-3290.

## 2007 Clarke County Fair

The tentative schedule was in the November and December Newsletters. One item of note is that the exhibits will once again be in the SWCC Building for 2007.

The new 4-H/Community Building will be under construction, but is not expected to be finished to a point that it can be used for the exhibits.



## Holiday break is a great time to create your own 4-H MemoryBook!

You've read about them. You've seen them at the State Fair. Now it's time to make your own! The Iowa 4-H Memory-Book is an online scrapbook where you can capture all of your favorite 4-H memories. Create and publish your own book or join together with family or friends and make it a group project. Your stories... your pictures... all professionally printed and delivered to your mailbox. Find out more by visiting our Memory-Book site: [http://iowa4h.sharedbook.com/pilot/enterBook.do?bookId=4H2006\\_001\\_Iowa](http://iowa4h.sharedbook.com/pilot/enterBook.do?bookId=4H2006_001_Iowa)

### A Great Idea for a Family or 4-H Fieldtrip to the Movies

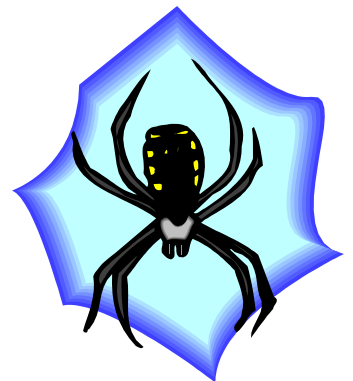
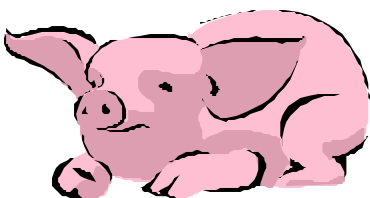
A wonderful movie based one of the best selling books, Charlotte's Web will open across our area in Theaters. It is a wonderful movie depicting this timeless award winning tale of friendship and loyalty and has wonderful human actors with Dakota Fanning as Fern and plenty of famous voices for the animal characters including Julia Roberts, Oprah Winfrey and 4-H Alum Reba McEntire.

If your 4-H clubs is going as a group, make sure you arrive early for the showing to make sure that there is adequate seating for your whole group. Clubs can purchase the tickets online to make a \$1 donation/ticket to 4-H through Hollywood Movie Money at [https://www.activaterewards.com/four\\_h/](https://www.activaterewards.com/four_h/), but be aware that there is a \$2 processing fee/ticket where \$1 goes to Iowa 4-H. Just fill in your zipcode for theaters in your area accepting the Hollywood Movie vouchers. If no theaters in your area are participating in the special promotion, maybe your clubs could just include an extra one dollar when collecting for tickets if they want to make a contribution and send that to the Iowa 4-H Foundation.

This is a great opportunity to support Walden Media, a movie company dedicated to producing movies from wonderful award winning books that parents, leaders, teachers and kids already love and adore like The Lion, The Witch and the Wardrobe, Bridge to Terrabithia, Holes and now Charlotte's Web. There are lots of wonderful activities surrounding this movie on the Walden Media website for your club to do following the movie: <http://www.walden.com/walden/properties/charlotte/>

If your clubs want to do some fun activities following the movie as a followup, there are three activities in the Educator's Guide that we would recommend: Go to <http://www.walden.com/walden/teach/charlotte/index.php> and click on the Educator's Guide to download the .pdf version of the book.

1. Lesson 1 on Friends, where they can talk about how important friendship was to Wilbur and what things others can do for their friends
2. Lights, Camera and Action where the members put together a model of the movie set and have them act out their favorite scenes.
3. A Friend Like Fern –which is a lesson adaptation from the 4-H Project material on Pets where members keep track of what they did to provide food, water, shelter and companionship for a pet or animal. Charlotte's Web of True Friendship Essay contest where they write about a true friend that they have and what makes them a true friend.



## 2007 Kansas City 4-H Global Conference

The 2007 Kansas City 4-H Global Conference is scheduled for March 7-10, 2007, at the Hilton Airport Hotel in Kansas City, Missouri. The Kansas City Global Conference will include hands-on sessions that involve youth in solving issues central to their lives, families, and communities in a global society. This four day experience will broaden their horizons and insights into the world in which they live. The ultimate goal is to increase the global awareness and workforce skill and career competency development of the participants through a series of workshops, tours, and events that broaden their perspectives.

Mixers, dances, and other opportunities to meet other 4-H'ers from Arkansas, Iowa, Missouri, Nebraska, Oklahoma, and Kansas! Wednesday evening will feature an opening banquet, keynote speaker and dance. Thursday and Friday, delegates can select from a variety of tours and workshops. Examples of tours include the Harley Davidson manufacturing plant, the Kansas City Board of Trade, the air traffic control tower. There will be workshops conducted by NASA and U.S. Secret Service (Really!) as well as several others on science, engineering, journalism and more!

For states' night out on Thursday, the Iowa delegates will have dinner on their own at a place to be determined and then return to the hotel for a guest comedy club performance and delegate talent show. Friday evening's Ethnic Enrichment Festival with crafts, food, entertainment, and games will give delegates an international cultural experience. Costs this year are \$210 for youth delegates and \$265 for adults. The registration fee includes registration, lodging, some meals, insurance and transportation while in Kansas City.

A complete packet of information that includes description of tours, workshops and service learning projects; registration forms; Iowa 4-H Medical Information Release; and delegate expectation form will be available to download from the Harrison County web page at <http://www.extension.iastate.edu/harrison/> Registrations are due January 15, 2007 to Dee Colwell in Harrison County, so don't delay! You must be a high school sophomore, junior or senior to participate.

Earlier, there was some misinformation released that registrations would be done on-line. This is not the case this year. Registrations will be done on paper as in previous years. The difference is that the forms will be available on line and will not be mailed out to counties. Please direct questions to Dee Colwell, [colwell@iastate.edu](mailto:colwell@iastate.edu), phone 712/644-2105. Dee will be the coordinator for Iowa groups who participate in this 4-H opportunity.

If you have questions and/or do not have internet access, call the Clarke County Extension office at 342-3316.

Going to Kansas City, Kansas City Here I Come!

Clarke County Extension  
Iowa State University Extension  
154 West Jefferson Street  
Osceola, Iowa 50213-1286

