

Clover Connection

Ida County Extension
209 1/2 Moorehead Ave.
Ida Grove, IA 51445
Ph. 712-364-3003/Fx. 712-364-3529
xida@iastate.edu
<http://www.extension.iastate.edu/ida>

Clovers to...

- Tammy Neubauer, Tasha Neubauer and Bill Redenius for helping with the fruit & butter braids on delivery day!
- Rod Jensen and the Dollar General Store for donating the use of their carts on fruit delivery day!
- All families that helped make the 4-H Fundraiser a success!
- Lisa Cronin and Kelli Boyle for serving 4 years on the Extension Council.
- Jerry Ullrich for his year on the 4-H Committee.

NORTHWEST AREA EXTENSION

January 2009 Issue

4-H Youth Council

Courtney Bottjen
Adrienne Burk
Michaela Else
Greg Davis
Victoria Andresen
Shelby Neubauer
Shiliah Spaulding
Kysa Bennett

Extension Council

Rod Jensen, Chair
Clint Conover
Klint Cork
Lori Phillips
Dale Friedrichsen
Jolene Riessen
Tammy Neubauer
Kyle Rohlk
Todd Vohs

4-H Committee

Kyle Bennett
Leah Godbersen
Carman Grove
Trisha Hoffman
Mary Rohlk
Joan Verschoor

Office Staff

Kathy S. Schmidt CEED
Susan Redenius CYC
Marla Seuntjens OA

Congratulations to.....

- Jolene Riessen and Lori Phillips for being elected to the Ida County Extension Council.
- Rod Jensen and Klint Cork for being re-elected to the Ida County Extension Council.
- Justine Cork, of the Battle Badgers, who had the highest sales with the Fundraiser!

Calendar of Events

County Happenings

- Jan. 1 Office Closed, New Years Day
Jan. 2 FSQA Testing Day at Extension Office, 9AM-4PM
Jan. 3 9AM Beef Weigh-in at Fairgrounds, Retinal scans at 10 am and Yearling Pens 11am
Jan. 8 Office Closed, Northwest Area All Staff Meeting
Jan 10 Beef Weigh-in SNOW DATE
Jan. 18 Youth Council Meeting, 6:30 pm at Extension Office
Jan. 26 4-H Committee Meeting, 7:30 pm at Extension Office
Feb 10 FSQA Training Date @ the Extension Office 7-9 pm
Feb 11 FSQA Testing Day @ the Extension Office 2-5 pm
Feb. 16 Office Closed, Observing Presidents' Day
Mar 2 FSQA Training Date @ the Extension Office 7-9 pm
July 29-Aug.2 2009 Ida County Fair

Out of County Happenings

- Jan. 16 Early Bird Registration for State Volunteer Retreat, \$25
Jan. 26 Registration Deadline for State Volunteer Retreat, \$30
Feb. 1 4-H College Scholarships Due to State Office
Feb. 1 Iowa's Promise Grant Application Due to State Office
Feb. 6-7 State Volunteer Retreat
Mar. 1 Area Award Applications & Support Material Due to County Office
Mar 31 Power of Youth (Legislative Day) in Des Moines
Aug 13-23 2009 Iowa State Fair
Sep 12-20 Clay County Fair

Club Meetings

- Battle Badgers - January 4, 1:30PM
- Blaine Clovers - January 11
- Garfield All Stars - January 4, 7:30PM
- Grant 4-H'ers - January 3
- Grant Champions -
- Logan Hotshots -
- Maple Huskies - January 10, 10:30AM
- Sharp Shooters-



If your club's meeting date is not on the list, I do not have a club program from the leader. LEADERS, I need these ASAP for insurance purposes.

2009 Ida County Fair Dates

The dates have been set for the 2009 Ida County Fair. They are: July 28th-August 2. Other important dates are:

- Pre-Fair Clean-up: July 11th
- Communications Day: July 18th
- Livestock Auction: August 3th
- Post-Fair Clean-up: August 4th

Enrollment Forms

Enrollment & Re-Enrollment forms were due November 2nd. We still want you to enroll/re-enroll in 4-H, however you will be responsible to pay the \$20 Program Development Fee plus \$1 insurance fee per member, for a total of \$21. If you have misplaced your forms or need enrollment forms contact the Extension Office.

Remember that you are not automatically re-enrolled from the previous year! You have to complete these forms for the 2008-2009 4-H year:

- Project Enrollment Form
- Code of Ethics Form
- Medical Release Form
- Bring \$20 Program Development Fee with your Forms

Livestock Enrollment

If you plan on exhibiting livestock please make sure you put it on your enrollment/ re-enrollment forms. This is important because we want to be sure you receive all important special mailings. If you would like to add a project area to your enrollment/ re-enrollment form please contact Susan at the Extension Office, 364-3003.

Clover Connection Question

What does FSQA stand for?

Be the first **Junior** 4-Her to answer the question and win a prize.

Northwest Area Recognition

It is time to start thinking about applying for NW Area and State Recognition Opportunities. Applications for Area Project Awards, State 4-H Council, Iowa Youth Tech Team, National 4-H Congress and National 4-H Conference. For more information, and an application contact the County Extension Office or check out this website:

<http://www.extension.iastate.edu/emmet/info/awards.htm>

For more detailed information on each opportunity check out this website:

<http://www.extension.iastate.edu/4H/recognition.htm>

Applications and support materials are due to the County Extension Office by March 1, 2009. Live interviews will take place in Storm Lake. Please make sure to read the directions carefully and make sure you have the correct support materials, as well as the correct amount of each.

State Project Awards

All 4-H'ers in grades 9-12 are eligible to apply for State Project Awards. For more information and for applications visit:

<http://www.extension.iastate.edu/4H/recognition.htm>

Scholarships

It's time to start thinking about scholarships. Iowa 4-H Scholarship applications and **all** support material **must be received on or before February 1st at the State Office**. Here is a helpful website to check out for all 4-H Scholarship information:

- <http://www.extension.iastate.edu/4H/grants.html>
- This information is also available at the County Extension Office

Also check out the Ida County 4-H Foundation webpage to take advantage of the scholarship opportunity that is offered. It has a deadline of April 1, 2009. Check out the webpage at:

- <http://www.extension.iastate.edu/Ida/news/4hfoundation.htm>

2009 State Volunteer Retreat

It's not too early to be thinking about your 2009 calendar! The 2009 State Volunteer Retreat is scheduled for Friday evening February 6th - Saturday, February 7th. Friday evening will have hands on activities and networking. Saturday will be workshops related to clubs and youth. Please consider attending. It is a great opportunity to learn new ideas to bring back to the county and club!

Registration deadlines: Early-Bird \$25 by January 19th; \$30 from January 20-26.

4-H Publications

If you are looking for information on specific project areas, the Extension Office has a library of literature for check out or for purchase.



Project Areas & Exhibits

It's not too early to be thinking about the 2009 Ida County Fair! You can start by picking project areas you might like to exhibit in at the fair.

For a few ideas check out:

www.extension.iastate.edu/4H/ProjectLinks.htm or

www.extension.iastate.edu/4H/projects.php or check out the 4-H Pick a Project paper.



4-H'ers Need Your Talent

Anyone who has a skill or special interest to share with us, please contact the Extension Office. We are always looking for workshop ideas and presenters. Your skill or area of expertise may be just what we are looking for. Gardening, scrapbooking, showmanship, mechanics, and shooting sports are just a few examples. Call Susan at the Extension Office 364-3003.

Retinal Scanner Challenge

The Grant 4-H'ers are putting out a challenge to all other 4-H Clubs to make a donation towards the new Retinal Scanner being purchased for Ida County 4-H'ers. The Grant 4-Hers made a \$100 donation. THANKS!

Iowa's Promise Grant

Iowa's Promise Youth Grant is a partnership of the Iowa Commission on Volunteer Service and ISU Extension, which administers grants up to \$250 to qualified youth groups/ community groups to help Iowa's youth make lasting contributions to their communities.

The grant has been designed to help youth groups (4-H, FFA, Scouts, church/school groups, etc.) make a connection between their activities and volunteerism in communities. Past examples of programs funded through Iowa's Promise Youth Grant include:

- Improving a playground at the county fairgrounds
- Purchasing new park equipment
- Landscaping a local museum sign
- Building picnic tables
- Creating a teen area in a library

Applications and grant descriptions are available at ISU Extension county offices and may be downloaded from

www.extension.iastate.edu/4H/grants.html. For more information on Iowa's Promise Grants, go to www.lowaPromise.org and see Resources.

Iowa's Promise Youth Grant application is due Feb. 1, 2009, to the ISU Extension 4-H Youth Building in Ames, Iowa.



ATTENTION:

CHANGES in BEEF
WEIGH-IN for this SATURDAY January 3

With some generous donations from Randy Rohlk and Dale Ullrich and a lot of phone calls between Kathy and Dickinson County, WE WILL HAVE A RETINAL SCANNER AND TECHNICIAN at the Ida County Weigh-in THIS SATURDAY !!!!!

There are a few changes to weigh-in times and prices that this effect.

Weigh-in: Saturday January 3, 2009

Snow Date: Saturday January 10, 2009

Weigh-in Time: 9:00 County show only calves/ pens

10:00 RESERVED: Retinal scanning

11:00 RESERVED: Yearling Pens for grading

If you come during a reserved time with county only animals, PLEASE be prepared to wait. We will have paid technicians and judges here and those animals will have priority.

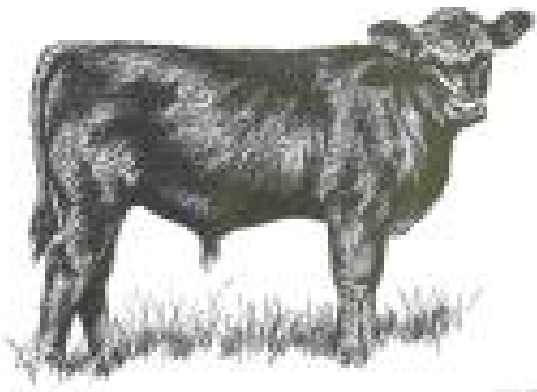
Cost: County Ear Tag only	\$1.50
Iowa State Fair ID, scan & ear tag	\$6.50
Ak-Sar-Ben ID & ear tag	\$6.50
Tatoos	\$3.00

If you have yearling pens and individuals please come as close to 11:00 as possible for all. You do not need to come at two separate times.

Breeding heifers do not have to be weighed in, but do need to have a tattoo by May 15, 2009.

Please remember that Beef weigh-in is done for verification purposes only and does not automatically register your animals for any competition. Each 4-Her exhibiting anywhere will have to fill out separate registration forms at a later date.

Please listen to KKIA radio station for weather related announcements.



Remember that if your animal is not being kept at your place of residence, you need to notify the Superintendents, in writing, the day of weigh-in for majority approval/denial. A written letter of approval or denial will be sent to you for your records. You will verbally know their decision on the day of the weigh-in.

Please remember signatures on the verification and waiver forms, especially if the 4-Her and/or parent cannot be at weigh-in.

Any questions or concerns call the Extension Office at 364-3003.

New State Fair Livestock Changes

Beef

- NO Artificial Tails allowed
- No coaching rule– no coaching will be allowed from or near the ring. This includes verbal or non-verbal. Violators will be escorted from the barn/show ring for the duration of the show.
- Commercial heifers MUST have a tattoo
- Hard to read tattoos– must check prior to fair, if re-tattoo is necessary please have Extension staff person present.
- NO fresh tattoos at State Fair

Horse

- Walk/trot class has been combined into one age group
- Substitutions are allowed if the replacement horse is listed on ID form– July 15th Deadline– you can substitute a horse until July 25th with a letter from the vet.
- Looking at allowing horses to arrive Monday afternoon/evening for State Fair

Meat Goat

- Withers and does will be allowed to show

Sheep

- Adjustments made to Performance Lamb carcass formula
- Purebred registration papers– original paper must be present, no copies, no faxes!

Swine

- Check-in paint number must be legible upon entering the show ring or it will not be allowed to show.
- Derby show weigh-backs will be eliminated
- All farrowing dates for purebred will go by the date on the registration paper
- Purebred Registration Papers– Bring ORIGINAL paper to State Fair check-in line, NO FAXES!
- Derby Swine– Ultrasound will be used exclusively rather than carcass data– awards given at the show

Dairy & Dairy Goat

- The cards will be mailed to the exhibitor with letters in July after entries
- Exhibitor will bring cards to State Fair check-in
- Dairy cattle cards will also be mailed to FFA exhibitors

FSQA Information

FSQA (Food Safety & Quality Assurance) is a statewide program that all livestock exhibitors except dog, horse, cat, or pet are required to take. Participants will learn good production practices and proper ethics.

- All youth ages 9-11 on Jan. 1 will need to attend an approved training each year.
- Youth ages 12-14 on Jan. 1 will have the option of attending a training every year, or completing a test which will certify them until they turn 15.
- Youth ages 15-18 on Jan. 1 will have the option of attending a training every year, or completing a test which will certify them until they turn 19.
- At the time youth turn 19, they will need to certify in the adult Quality Assurance programs according to the adult rules.

Ida County will be offering two FSQA Testing dates, and two FSQA Training Dates:

- **FSQA Testing Day**: Friday, January 2, 2009 from 9AM to 4PM at the Extension Office
- **FSQA Training** : Tuesday, February 10, from 7-9 pm @ the Extension Office
- **FSQA Testing Day** : Wednesday, February 11, from 2-5 pm @ the Extension Office
- **FSQA Training** : Monday, March 2, from 7-9 pm @ the Extension Office

We will not be offering any FSQA Testing on FSQA Training days. If you would like to test, come to the Extension Office on Friday, January 2nd anytime between 9AM - 4pm and Wednesday February 11 from 2-5 pm. If you choose not to test or do not pass the test, then you must attend a two hour training session to meet FSQA requirements. Study manuals are available at the Extension Office for a \$5.00 fee.

You do not need to pre-register, just show up on the testing day or either trainings. If you have any questions please contact Susan at the Extension Office, 364-3003

IDA COUNTY

HAPPY NEW YEAR
FROM THE STAFF AT THE
IDA COUNTY EXTENSION OFFICE

If you would prefer to receive the Clover Connection via e-mail please call the office with your address. If you wish to no longer receive this publication or know of someone who should be receiving it, please let us know.
(364-3003)

WE ARE ON THE WEB!
Check out the Ida County Extension webpage at:

The U.S. Department of Agriculture (USDA) prohibits discrimination in all its program and activities on the basis of race, color, natural origin, gender, religion, age, disability, political beliefs, sexual orientation, and marital or family status. (Not all prohibited bases apply to all programs.) Many materials can be made available in alternative formats for ADA clients. To file a complaint of discrimination, write USDA, Office of Civil Rights, Room 326-W, Whitten Building, 14th and Independence Avenue, SW - Washington, DC 20250-9410 or call 202-720-5964. Cooperative Extension Service, Iowa State University of Science and Technology, and the United States Department of Agriculture cooperating.



IOWA STATE UNIVERSITY
University Extension
209 1/2 Moorehead Avenue
Ida Grove, IA 51445