

Clover Connection

Ida County Extension
209 1/2 Moorehead Ave.
Ida Grove, IA 51445
Ph. 712-364-3003/Fx. 712-364-3529
xida@iastate.edu
<http://www.extension.iastate.edu/ida>

NORTHWEST AREA EXTENSION
December 2008 Issue



4-H Youth Council

Courtney Bottjen
Adrienne Burk
Shiliah Spaulding
Shelby Neubauer
Kysa Bennett
Michaela Else
Victoria Andresen
Greg Davis

Extension Council

Kelli Boyle
Clint Conover
Lisa Cronin
Dale Friedrichsen
Rod Jensen
Tammy Neubauer
Kyle Rohlk
Todd Vohs
Klint Cork

4-H Committee

Leah Godbersen
Carman Grove
Trisha Hoffman
Mary Rohlk
Kyle Bennett
Joan Verschoor
Jerry Ullrich

Office Staff

Kathy S. Schmidt	CEED
Susan Redenius	CYC
Marla Seuntjens	OA

Clovers to...

- Everyone that helped make the 2008 4-H Awards Program a success!
- Beth Wolterman for putting a big spread in the Courier about the Awards Program and proof reading the program.
- County Youth Council for all their hard work and extra effort.
- The BCIG High School for letting use their facility for our Awards Program
- Becky Miller for helping with the PA and opening the school for us.
- Grant Champions for making and donating Christmas Cards to the Iowa 4-H Foundation.

Congrats to:

- All members and adults that were recognized and received awards at the 2008 4-H Awards Program.
- Shiliah Spaulding for being named the 2009 Iowa Honey Queen.
.We are so proud of you.

Calendar of Events

County Happenings

- Nov. 24 Leader's Training 6:30pm Extension Office
Nov. 24 4-H Committee Meeting 7pm Extension Office
Nov. 24 Horse Workshop w/ Beth Doran 7pm Extension Office
Nov. 27-28 Office Closed, Thanksgiving Holiday
Nov 30 Susan in office to collect fundraising packets 3-5 pm
Dec. 3 Extension Council Meeting 7 pm Extension Office
Dec. 15-19 Fundraiser Pickup, Will contact leaders with exact date and time.
Dec. 20 Youth Council Parent's Night out Babysitting Service
Dec. 25-26 Office Closed, Christmas Holiday
Jan. 2 FSQA Testing Day at Extension Office, 9AM-4PM
Jan. 3 9AM Beef Weigh-in at Fairgrounds, Yearling Pens 11PM
Jan. 8 Office closed, Northwest All Staff Meeting

July 29-Aug.3 2008 Ida County Fair

2009 Ida County Fair Dates

The dates have been set for the 2009 Ida County Fair. They are: July 28th - August 1st! Other important dates are:

- Pre-Fair Clean-up: July 11th
- Communications Day: July 18th
- Livestock Auction: August 3rd
- Post-Fair Clean-up: August 4th

Options for 2009 Retinal Beef Scans

Since Ida County will not have a Retinal Scanner in our possession before January 3 at weigh-in, there are a few options for those 4-Hers needing to have their animals scanned.

- **Cherokee County** December 30 from 12:30 to 2:30 at the Cherokee County Fairgrounds. You will be tagged with an Ida County tag and then scanned. You will still need to weigh in at the Ida County Weigh-in January 3.
- **Woodbury County** Saturday January 3, 8:30 to 12:30. You will need to be weighed and tagged in Ida before going to Merville for your scan. Location is Bliel Chapman Auction Barn, between Merville and Kingsley.
- **Sac County**, Saturday January 3. Ida County 4-Hers may be scanned only after Sac County 4-Hers are done. Around 3pm. You will need to be weighed and tagged at Ida before you go. Held at the Sac County Fairgrounds.
- **Crawford County**: Saturday January 3, Ida may come after being tagged and weighed in Ida County.

PLEASE LET SUSAN KNOW WHERE YOU PLAN TO GO FOR YOUR SCAN, SO ARRANGEMENTS CAN BE MADE WITH EACH COUNTY ALLOWING US TO COME.

Any questions call Susan at the Extension office 364-3003.

Livestock Enrollment

If you plan on exhibiting livestock please make sure you put it on your enrollment/ re-enrollment forms. This is important because we want to be sure you receive all important special mailings. If you would like to add a project area to your enrollment/ re-enrollment form please contact Susan at the Extension Office, 364-3003.

Congratulations: Shiliah Spaulding

On Friday, November 7th, Shiliah Spaulding, daughter of Roger and Lois Spaulding, was crowned 2009 Iowa Honey Queen. Shiliah has been featured in the Sioux City Journal and on their web page. We would like to let Shiliah know how proud of her we are and what a BEE-UTIFUL job she has done for Ida County 4-H. Shiliah is the president of the County Youth Council and of her 4-H Club, the Maple Huskies. She also represents Ida County on the NW Area Council.

2009 Retinal Scan Update

The Ida County Extension Council has agreed to purchase a Retinal Imaging Machine for our county. Retinal scans are now being required for certain out of county shows. The State Fair has made Retinal scans mandatory effective this year. All other larger shows may soon follow suit. AK-SAR-BEN being in Nebraska will stay with hair sample.

With that being said our 4-Hers currently have to travel out of county to get this scanning done. With the purchase of this machine, in the Spring of 2009, that will not have to happen. We have had some generous donations for this machine from the Ida County Cattlemen, Ida County Pork Producers, as well as a local 4-H family. We are still in need of a few donations for make this purchase more feasible. This donation can be from 4-H Clubs, families, or any one interested in making Ida County 4-H better. Thanks for your support.

Iowa's Promise Grant

Iowa's Promise Youth Grant is a partnership of the Iowa Commission on Volunteer Service and ISU Extension, which administers grants up to \$250 to qualified youth groups/community groups to help Iowa's youth make lasting contributions to their communities.

The grant has been designed to help youth groups (4-H, FFA, Scouts, church/school groups, etc.) make a connection between their activities and volunteerism in communities. Past examples of programs funded through Iowa's Promise Youth Grant include:

- Improving the playground at the Fair grounds
- Purchasing new park equipment
- Landscaping a local museum sign
- Creating a teen area in a library

Applications and grant descriptions are available at ISU Extension county offices and may be downloaded from www.extension.iastate.edu/4H/grants.html. For more information on Iowa's Promise Grants, go to www.lowasPromise.org and see Resources.

Iowa's Promise Youth Grant application is due Feb. 1, 2009, to the ISU Extension 4-H Youth Building in Ames, Iowa.

Pioneer Grant

Pioneer Hi-Bred International is offering Pioneer Community Improvement Grants through the Iowa 4-H Foundation. Clubs are encouraged to apply for "seed money" to help get started on community projects. Application and all support material must be to the Extension Office by December 1st.

The brochure, information, and application are available on the web at:

www.extension.iastate.edu/4H/PioneerGrants.html

Clover Connection Quiz

The first person to call in and tell Susan what 4-H group the stockings on the back page belong to will win the clover connection prize. Last month's winner was Shiliah Spaulding and the October question was answered by Alana Redenius. Congrats!

State Project Awards

All 4-H'ers in grades 9-12 are eligible to apply for State Project Awards. For more information and for applications visit:

<http://www.extension.iastate.edu/4H/recognition.htm>

Parents' Night Out

The Ida County Youth Council will be sponsoring a Parents' Night Out. This will be offered to the first 30 children that get signed up. The cost is \$5.00 per child or a maximum of \$20 per family. Child care, supper, crafts, movies, and games will be provided for the cost. This event will go from 5 pm to 10pm Saturday November 20th.

Sign up your children by calling the Extension Office @ 364-3003.

Re-Enrollment Time

Enrollment & Re-Enrollment forms were due November 2nd, if you have not turned yours in please do so as soon as possible. All forms are due by November 24 or you will have to pay the \$20 enrollment fee.

Remember that you are not automatically re-enrolled from the previous year! You have to complete these forms for the 2008-2009 4-H year:

- Project Enrollment Form
- Code of Ethics Form
- Medical Release Form

4-H Fundraiser

PICK-UP: The week of December 15-19
We will let leaders know ASAP
The exact day and time.

- Sellers are responsible for picking up and delivering their own orders. Please make arrangements to have products picked up your orders from the Extension office. If you are not available to pick-up the products please have someone available that can.
- Funds raised by 4-H'ers involved in scholarships will be earmarked for those specific projects. Funds raised by all other 4-H'ers and clubs will be used to pay for club insurance, which is \$1.00 per member and \$2.00 per horse member. The remaining money will be split between the participating clubs and the Extension Office. The clubs will be receiving portions based on the percent of their sales.
- Order forms were given to Club Leaders at the Awards Program. If you need extra forms the Extension Office has extras.
- If there are any questions please call Susan at 364-3003



FSQA Information

FSQA (Food Safety & Quality Assurance) is a statewide program that all life stock exhibitors except dog, horse, cat, or pet are required to take. Participants will learn good production practices and proper ethics.

- All youth ages 9-11 on Jan. 1 will need to attend an approved training each year.
- Youth ages 12-14 on Jan. 1 will have the option of attending a training every year, or completing a test which will certify them until they turn 15.
- Youth ages 15-18 on Jan. 1 will have the option of attending a training every year, or completing a test which will certify them until they turn 19.
- At the time youth turn 19, they will need to certify in the adult Quality Assurance programs according to the adult rules.

FSQA Training Days will be posted in next month's newsletter. However **January 2 will be a scheduled Testing Day at the Extension Office.**

We will not be offering any FSQA Testing on FSQA Training days. If you would like to test come to the Extension Office on Friday, January 2nd anytime between 9AM - 4PM. If you choose not to test or do not pass the test, then you must attend a two hour training session to meet FSQA requirements. Study manuals are available at the Extension Office for a \$5.00 fee. If you have any questions please contact Susan at the Extension Office, at 364-3003.



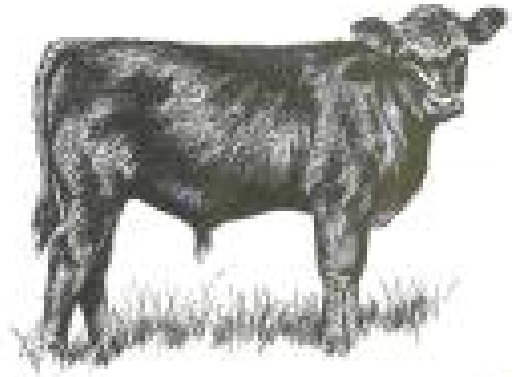
Beef Weigh-In 2008

WHEN: Saturday, January 3, 2008

WEIGH-IN TIME: 9:00 AM
11:00 PM Yearling Pens

LOCATION: Ida County Fairgrounds

COST: County Ear tag - \$1.50
Iowa State Fair ID - \$5.00
Ak-Sar-Ben ID - \$5.00



All market steers, market heifers, calf pens of three, and yearling pens of three will be weighed-in. We will also tattoo breeding heifers and collect hair samples for Ak-Sar-Ben.

Breeding heifers do not have to be weighed-in, but do need a tattoo by May 15, 2009, tattoos cost \$3.00. All tags, tattoos, and hair samples, must be paid for at weigh-in.

If a 4-Her has a yearling pen and individuals they do not have to come at two separate times, just come close to noon and we will try to fit the individuals in prior to their pen.

Please remember that the beef weigh-in is conducted for verification purposes only and does not automatically register any animal for any competition. Each 4-H'er exhibiting anywhere will have to fill out a separate registration forms at a later date.

All 4-H'ers who have turned in enrollment forms and indicated they are doing a beef project will receive a detailed letter before January 3rd, 2009. The letter will include a Market Beef Identification Report. Please have the top part of the form filled out completely before you come to beef weigh-in. If you have any questions or if you are not enrolled in the beef project and would like to be please contact Susan Redenius at the Extension Office, 364-3003.

IDA COUNTY

HAPPY HOLIDAYS

KATHY, MARLA, AND SUSAN
WOULD LIKE TO WISH ALL OF YOU
A VERY WONDERFUL HOLIDAY
SEASON AND A VERY
YOUTH FULL NEW YEAR

ROD

Shillah Kysa Shelby Courtney Greg Victoria Michaela Adrienne



We are in the process of updating our files. If you would prefer to receive the Clover Connection via e-mail please call the office with your address. If you wish to no longer receive this publication or know of someone who should be receiving it, please let us know. (364-3003)

WE ARE ON THE WEB!
Check out the Ida County Extension webpage at:
www.extension.iastate.edu/ida

The U.S. Department of Agriculture (USDA) prohibits discrimination in all its program and activities on the basis of race, color, natural origin, gender, religion, age, disability, political beliefs, sexual orientation, and marital or family status. (Not all prohibited bases apply to all programs.) Many materials can be made available in alternative formats for ADA clients. To file a complaint of discrimination, write USDA, Office of Civil Rights, Room 326-W, Whitten Building, 14th and Independence Avenue, SW - Washington, DC 20250-9410 or call 202-720-5964. Cooperative Extension Service, Iowa State University of Science and Technology, and the United States Department of Agriculture cooperating.



IOWA STATE UNIVERSITY
University Extension
209 1/2 Moorehead Ave.
Ida Grove, IA 51445