



Healthy Farmer

Building hope and health in the rural agricultural community

Vol. 1, No. 2

October 2004

Who is considered a Farmer?

Recently AgriWellness polled the directors of eleven federally-funded regional and national Agricultural Safety and Health Centers to find out who they considered members of the agricultural population. They were asked to indicate if the occupations listed in the chart below are members of the agricultural occupation. Eight of the eleven directors completed the survey. The results can be found below.

According to these directors, they are divided on whether veterinarians are members of the agricultural occupation. Miners definitely are NOT part of the agricultural occupation. What do you think? Do you agree that Christmas tree producers and horse/dog trainers are agricultural occupations but food processors and farm financiers are not? We'd love to hear your thoughts! Please send them to agriwellness@fmctc.org



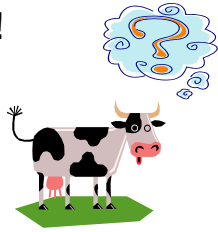
Occupation	Yes	No	Occupation	Yes	No
Farmers	8	0	Agronomists, Nutritional Consultants	3	5
Ranchers	8	0	Farm Financiers and Management Consultants	2	7*
Farm/Ranch Workers	8	0	Veterinarians	4	4
Food Processors	1	7	Marketers of Agricultural Inputs and Products	2	6
Transporters of Agricultural Inputs and Products	3	5	Agricultural Educators and Teachers	3	5
Agricultural Suppliers and Applicators	6	4*	Horse/Dog Trainers	5	3
Persons involved in Lumber Harvest and Processing	7	1	Turf, Garden/Nursery Operators	7	1
Persons involved in Christmas Tree Production	8	1*	Guest Ranch/Farm Operators	6	2
Commercial Fishers	8	0	Miners and other persons involved in extraction of minerals	0	8

*For any with 8 or more responses, it was because person(s) polled gave two answers, a yes and no, dependent on circumstances.



Happy Halloween

Let's Play Farm Trivia!



Question:

What are the top 5 counties in the U.S. for total agricultural production?

Answer: see bottom of page

The Clock is Ticking for Rural America: A Behavioral Health and Safety Conference 2005

AgriWellness, Inc. and its partners are pleased to announce that planning has begun on the second *The Clock is Ticking for Rural America: A Behavioral Health and Safety Conference*. It is going to be held July 2005 in Minneapolis, MN.

More information coming soon!

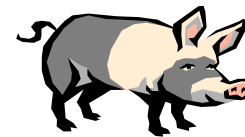
All readers of this newsletter are invited to attend!

As Harvest Season Ends, it's Time to Begin Your Winter Planning

Now that harvest season is almost over, here are some tips intended to help make you and next year's crop healthier:

- ✿ Do your soil samples and evaluate fertility needs.
- ✿ Analyze the nutritional value of grains to help merchandise it better.
- ✿ Make sure all the tractors and motorized vehicles have enough anti-freeze to prevent engine problems.
- ✿ Check all the hitches and tires on the wagons, etc, and determine what needs to be repaired.
- ✿ Make a list of all machinery repairs that need to be done and make a schedule for completion.
- ✿ Do a financial analysis to determine your tax situation.
- ✿ Find ways to make winter more fun and healthy this season (e.g. schedule family time).
- ✿ Help prevent heart attacks this spring by maintaining a schedule of exercise this winter.

Let's Play Farm Trivia!



Answer:

October 2004 USDA statistics indicate that Fresno, Tulare, Monterey, Kern and Merced counties, all in California, are the top five in terms of agricultural production. Merced County just made the list, edging out Weld County in northern Colorado. These are large counties mainly devoted to the production of fruits, vegetables, nuts and dairy products.

Please send us names and email addresses of people who would enjoy receiving this newsletter!

Send them to: Jaci Kiracofe, email: jacik@agriwellness.org

AgriWellness, Inc., 1210 7th St., Suite C, Harlan, IA 51537, 712-235-6100, www.agriwellness.org