

# Use of Quality Management Systems to Promote Traceability in Commodity Grains

Tim Sullivan  
West Central Cooperative

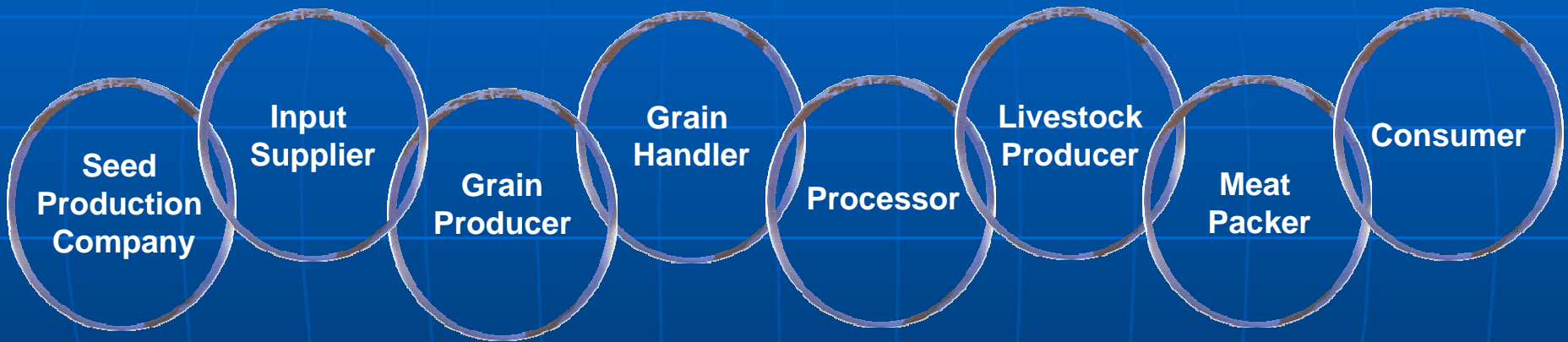
# Iowa Corn and Soybean Production

## ■ 2008\*

- Corn: 2.19 Billion Bushels
  - 13.3 Million Acres
  - Average Yield: 171 Bu./Acre
  - Average Value: \$3.95/Bushel
- Soybeans: 444.8 Million Bushels
  - 9.67 Million Acres
  - Average Yield: 46 Bu./Acre
  - Average Value: \$9.65/Bushel

\* Source: USDA National Agricultural Statistic Service (NASS)

# Why Grain Traceability?



# A Typical Iowa Elevator Jordan, Iowa



Jordan

# A Typical Iowa Elevator

## Jordan, Iowa

### ■ 2008

- Corn: 14 Million Bushels
  - 85,900 Acres
  - Average County Yield\*: 163 Bu./Acre
- Soybeans: 1.38 Million Bushels
  - 30,900 Acres
  - Average County Yield\*: 44.7 Bu./Acre

\* Source: USDA National Agricultural Statistic Service (NASS)

# What Complicates Tracing Grain?



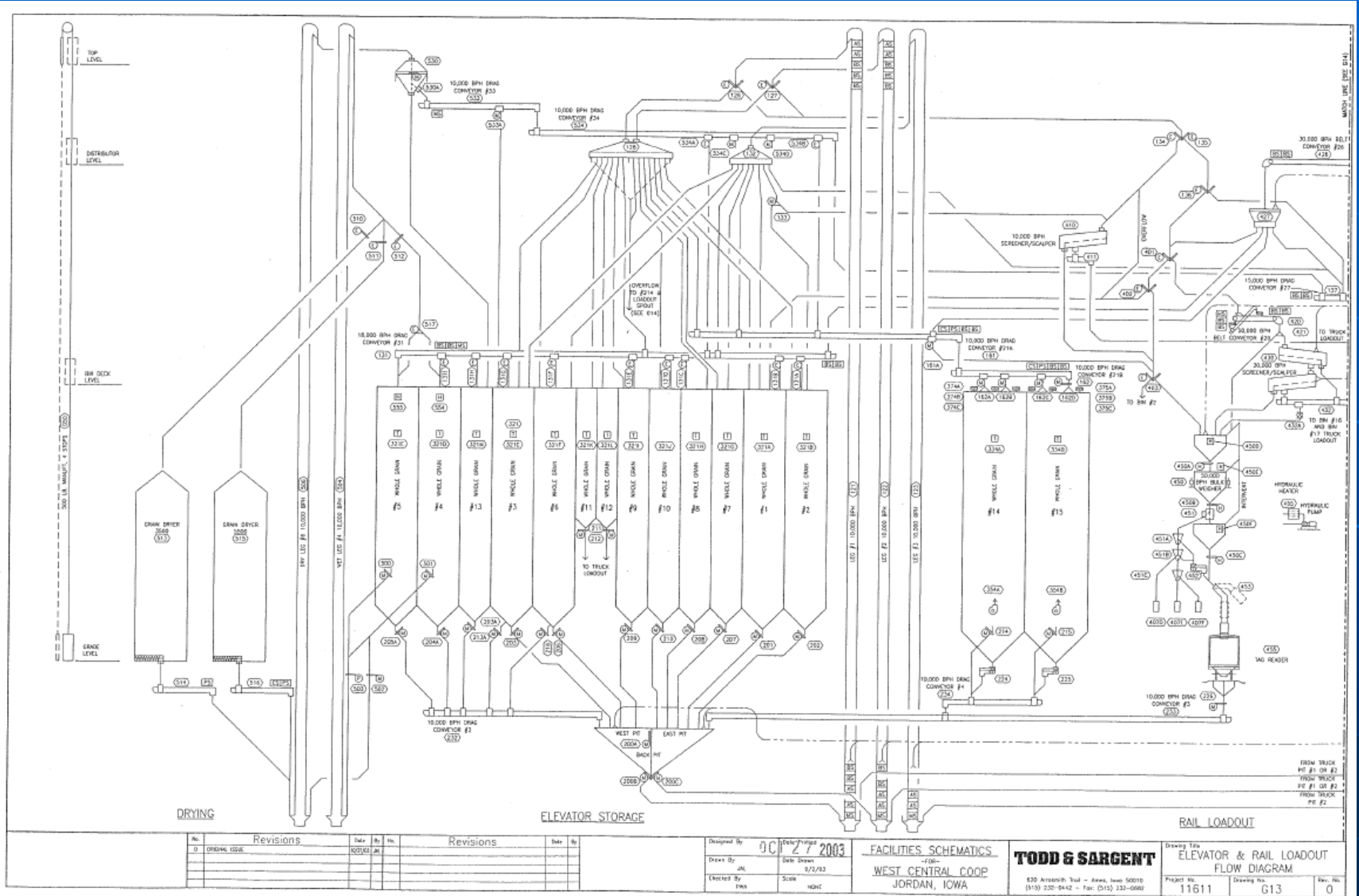
# What Complicates Tracing Grain?



# What Complicates Tracing Grain?



# What Complicates Tracing Grain?



Revisions				Revisions			
No.	Date	By	Issued	No.	Date	By	Issued
0			ORIGINAL ISSUE				

Designed by: **J.C. DeWitt**  
 Drawn by: **J.M.** Date Drawn: **8/22/83**  
 Erected by: **FMA** Scale: **NONE**

**TODD & SARGENT**  
 635 Atkinson, S.W. - Ames, Iowa 50010  
 515-232-9442 - Fax: 515-233-0888

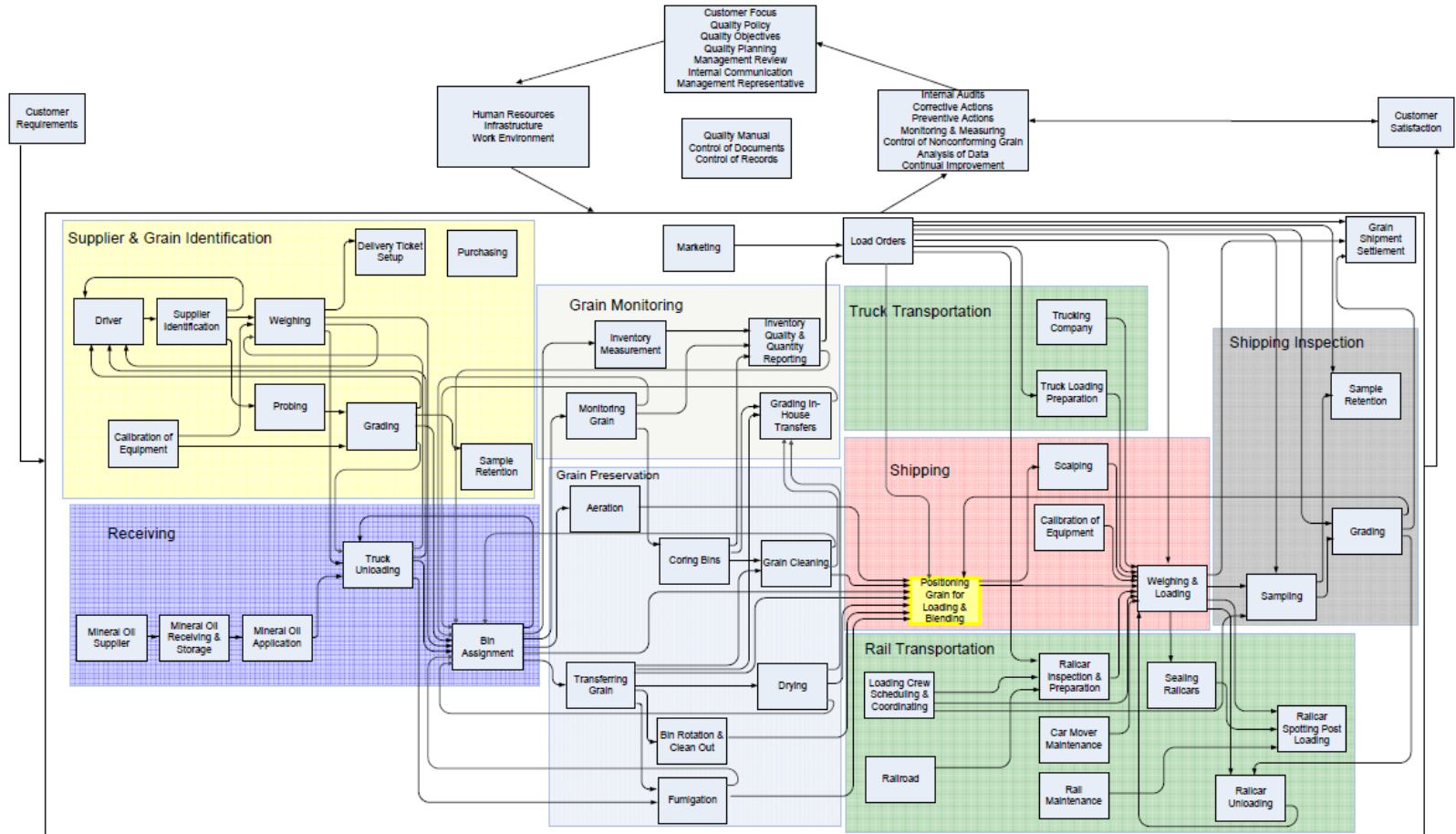
Drawing Title: **ELEVATOR & RAIL LOADOUT FLOW DIAGRAM**  
 Project No.: **11611** Drawing No.: **G13** Rev. No.: **0**

# What Complicates Tracing Grain?



# How Do We Control?

# How Do We Achieve Consistency?



# ISO 9001



# Product Realization

- The Product Realization Activity:

## Grain Traceability



# Monitoring & Measurement of Processes

- Internal Auditing
- Process Measurement
- Measurement of Product
- Control of Nonconforming Product
- Analysis of Data
- Continual Improvement
- Corrective and Preventive Action



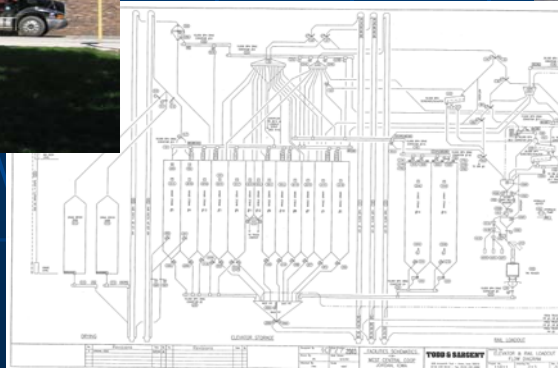
# Management Responsibility

- You can't have an effective Quality Management System without management commitment
- Management takes the results of measurement and analysis to:
  - Establish Quality Objectives
  - Plan
  - Communicate



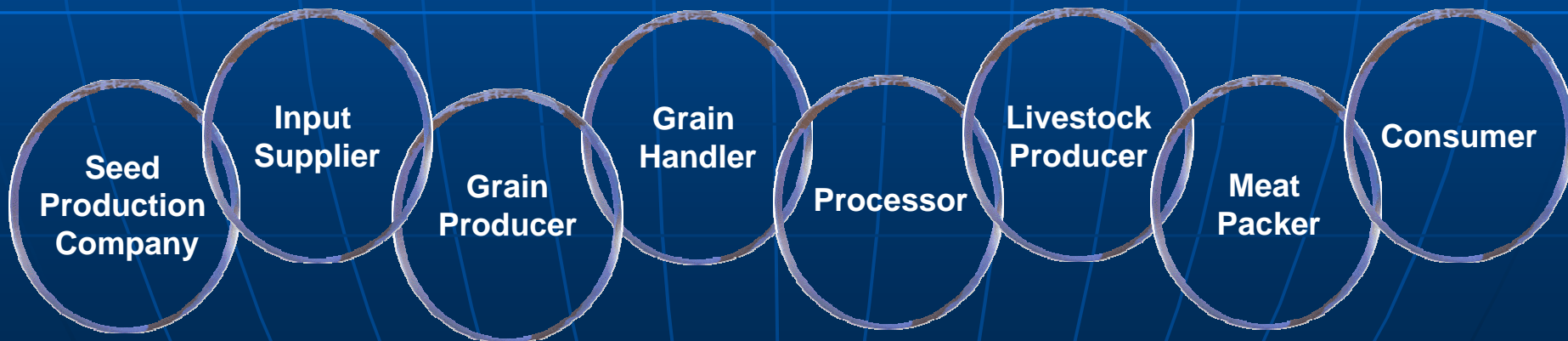
# Provision of Resources

- Determine and provide the resources to:
  - Implement and maintain the Quality Management System
  - Enhance customer satisfaction by meeting customer requirements.



# ISO 9001 – NO FEAR! JUST PLAIN COMMON SENSE

- ISO is a system that standardizes the methods and processes at an organization
- “ISO” *could stand for* “I Survived Obsolescence”.



# Thank you!

Contact me for more information:

Tim Sullivan  
[tims@westcentral.net](mailto:tims@westcentral.net)  
712-667-3351

**Agricultural & Food Traceability Conference**

June 9<sup>th</sup> & 10<sup>th</sup>, 2009

Des Moines, IA