

Celebrate Agriculture

Adair County Cattlemen's Banquet
Saturday, Feb 27 –6:00 p.m. social
hour with dinner at 6:30 p.m.
4-H & FFA Building, Greenfield

Ag Day Expo and Lunch
Monday March 15, 9:30 - 1:30
4-H & FFA Building, Greenfield

Corn & Soybean Association Banquet
Saturday, March 20 featuring Uncle
Bruster

Inside this issue:

| | |
|------------------------------|---|
| News for Cow/calf Producers | 2 |
| Frost Seeding & Interseeding | 3 |
| Pork Meeting/No-Till DVD | 4 |
| Scholarships | 4 |
| Boots to Heels | 4 |
| Extension Programming | 5 |
| March Calendar | 6 |

ISU EXTENSION - ADAIR COUNTY
202 SOUTH 1ST STREET, SUITE B
GREENFIELD, IA 50849
PHONE: 641-743-8412 800-ISUE-399
FAX: 641-743-0023
E-MAIL: KROHRIG@IASTATE.EDU
WWW.EXTENSION.IASTATE.EDU/
ADAIR

Better Information for a more Profitable Operation

Orient Crop Fair

March 2, 2010

9:00 a.m. — 1:30 p.m.

Orient United Methodist Church - Orient, Iowa

9:00 a.m. — Registration

9:30 a.m. — 2010 Crop Weather Outlook

Elwynn Taylor,
ISU Extension Climatologist



10:30 a.m. — Farm Energy Check-Up

David Stineman, Consumers Energy

11:00 a.m. — Managing Stored Grain to Protect Quality

Shawn Shouse, ISU Extension Ag Engineer

11:45 a.m. — Corn Disease and Ear Mold

Aaron Saeugling, ISU Extension Field Agronomist

12:30 p.m. — Lunch

Free to all crop fair attendees

1:30-3:30 p.m. Final Adair County Private Pesticide Applicator
Continuing Education Class

PPAT — Fee Applies \$20 for training; \$15 for license renewal

RSVP by Friday, February 26 for accurate meal count

contact the Adair County Extension Office

at 641.743.8412 or 1.800.ISUE.399

or powella@iastate.edu

This Crop Fair is FREE
thanks to our sponsors:



Advanced Ag, LLC.

IOWA STATE UNIVERSITY
University Extension

Extension programs are available to all without regard to race, color, national origin, religion, sex, age or disability.

Tough Winter for Iowa Beef Cows

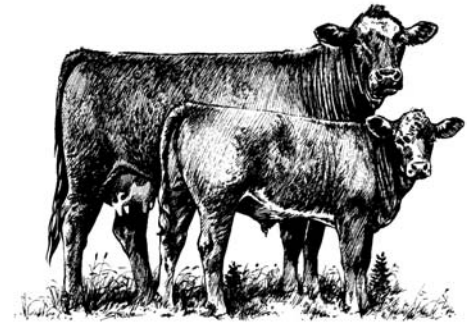
This winter has been very difficult for our cattle (and our beef producers!) As we entered fall 2010 it appeared we had lots of grazing available and adequate hay stocks. That has changed drastically with snow and ice covering our cornstalks and stockpiled grass, and extreme weather increasing the cows' feed requirements. "As we start the calving season, we need to be sure cows keep in good body condition and nutrient requirements are met", says Joe Sellers, Iowa State University Beef Program Specialist.

Some hay harvested in 2009 was low quality. "In a typical year, almost all of our cool season grass/legume mix hay is more than adequate in crude protein, and often is high enough in energy to meet the beef cow requirements the last part of

gestation", Sellers says. "Unfortunately, this year's hay was more variable in quality and may not meet the basic cow requirements." If the cow herd is not maintaining body condition, producers may need to add protein and energy supplementation. Corn co-products such as corn gluten feed and distillers grains are good sources of both protein and energy. Corn also may be added to provide needed energy. Actually testing hay for nutrient values can allow you to match supplementation to what you really need.

In addition to basic protein and energy needs, it is important to meet mineral and vitamin needs with supplements or free choice minerals. Be sure to monitor mineral consumption to ensure critical micro-minerals such as copper, zinc and

selenium, and needed vitamins are consumed at high enough levels. Contact Sellers at 641-203-1270 or sellers@iastate.edu for help with your cow herd rations.



Pasture Management - February 24 & 25

ISU Extension, the Iowa Beef Center, and the Southern Iowa Forage and Livestock Committee have planned several Improve Your 2010 Pasture Management workshops.

Topics include: Pre-grazing season management, planning; Optimizing grazing season production; ISU data and Iowa experiences with extended grazing and What do I do when pastures are short? Presenters are: Dr Robert Kallenbach, Forage Agronomist at the University of Missouri, and Joe Sellers, Beef Specialist, ISU Extension.

Choose the date and location that works for you:

Wednesday, Feb 24 at the Madison County Extension office, Winterset at 7:00 pm or

Thursday, Feb 25 at the Wallace Learning Center, Lewis beginning at 1:00 pm.

The series is funded in part by the Southern Iowa Forage and Livestock Committee and the Iowa Forage and Grasslands Council. A registration fee of \$10 per person is payable at the door. For more information, contact Joe Sellers at 641-203-1270.

CORRECTION

International Year/Letter

W for 2009, X for 2010

Tattoo those replacement heifers as a permanent identification. In the last newsletter we incorrectly stated - *The international year/letter designation for animals born in 2009 is V.*

FARM CUSTOM RATE SURVEY

The 2010 Iowa Custom Rate Survey is now available free of charge at the Extension office or can be printed at www.extension.iastate.edu/adair

Frost Seeding and Interseeding by Stephen Barnhart

Producers wanting to add to or improve the forage species in their existing pastures should consider using either the frost-seeding method in early March, or interseeding later in the Spring months.

Frost-seeding involves spreading forage seed on existing pastures during the late winter or very early spring while the ground is still frozen. Freeze-thaw cycles then provide shallow coverage of the seed, with help from early spring rains.

Frost seeding is the easiest way to add new forage legumes or grasses to your pasture, and is likely the least expensive method, as well.

To increase this method's success, one should spread seed on the thinnest pasture sod areas first and on areas where bare soil has been exposed due to heavy grazing or disturbance.

One common misconception about frost seeding is that spreading the seed on top of snow works best. The goal of frost seeding is to get seed on bare soil. This is more effectively and more safely done without snow cover.

Red clover has been the forage species of choice in Iowa for frost seeding. Other legumes, such as white clover and birdsfoot trefoil, also can be frost seeded but with less success than red clover. In general, frost seeding does not work as well with grasses.

Research has found that following a few steps will improve the success of frostseeding. See ISU Extension bulletin *Improving Pasture by Frostseeding* for more suggested seeding rates and guidelines. <http://www.extension.iastate.edu/Publications/PM856.pdf>

Interseeding offers an opportunity for improving pasture productivity too. Interseeding involves using a no-till drill to aid in the incorporation of a legume or a more productive grass into an existing pasture sod. Interseeding is normally done from mid-March through early May, when soil moisture and temperature are more suitable for rapid seedling establishment.

Interseeding can be accomplished with relatively few field operations. Opening of the grass sod, shallow seed placement, and seed coverage are required. A number of drills are available that can be used in sod-seeding efforts.

Some of these drills may have improved features related to sod penetration, depth control, seed metering, or coverage that improves their effectiveness in sod seeding situations. Equipment limitations for sod seeding implements sometimes are overcome by operator experience and home shop modifications.

Legumes interseeded into grass sod should increase pasture yield, improve forage quality, and eliminate or minimize need for nitrogen fertilizer. Clovers, alfalfa, and birdsfoot trefoil have been successfully interseeded. The more efficient seed placement provided by a no-till drill allows many of our more productive perennial forage grasses to also be successfully established by interseeding. Thin, low-

producing, grass sod might best be improved by interseeding a grass-legume mixture.

A seeding delay into late spring to improve growing conditions often also leads to a greater competition from the existing grass sod. Close grazing in the fall or spring, ahead of interseeding, will help to reduce sod competition. Contact herbicides are sometimes also used to temporarily further reduce competition from plants present in the stand.

Interseeding success depends a lot on paying attention to details, timeliness, careful management of sod completion, controlling seeding depth to no deeper than ¼ to ½ inch, and a little bit of luck with weather.

See Iowa State University Extension bulletin *Interseeding and No-Till Pasture Renovation* for more suggested seeding rates and guidelines. <http://www.extension.iastate.edu/Publications/PM1097.pdf>

For more information, contact **Stephen K. Barnhart, Extension Forage Agronomist, Iowa State University, and Ames, Iowa. Phone 515-294-7835 or sbarnhar@iastate.edu.**

Grain Drill Available for Rent

Adair County NRCS has a new 10' Great Plains grain drill. They rent the drill for \$16.00 an acre. NRCS also has a 25' culti-packer that rents for \$7.50/acre.

For more information or to reserve the equipment call 641-743-6124



College Scholarship Alert

A listing of local scholarships including many application forms can be found on our website <http://www.extension.iastate.edu/adair/info/scholarshiplisting.htm>

March 1 – Adair County Corn & Soybean Association Fritz Langguth Memorial Scholarship Parent must be member. Applications available at <http://www.extension.iastate.edu/adair/info/scholarshiplisting.htm>

March 1 - Adair Co & Iowa Farm Bureau Federation Scholarship Parent must be member. Application available at the Extension office or online www.iowafarmbureau.com Go to the Programs – Grants and Scholarships section.

March 15 – Iowa Soybean Association Ag Scholarship Program (State) Open to Iowa high school seniors who plan to attend any ag-related college or university <http://www.iasoybeans.com/whatnew/isa011810.html>

March 3 – Adair Co Soil & Water Conservation District Scholarship Applications available at the Extension office or online www.cdiowa.org/awards.html

March 18 – Agriland FS Foundation Scholarship Applicant must enter an ag-related field at any accredited college or university. Applications available at the Extension office or online www.agrilandfs.com For more info contact Christine Birney at 515-462-5353.

April 1 – Farmers Electric Cooperative Scholarship Parent must be member. Applications available at extension office or online www.farmersrec.com For more info call Farmers Electric Cooperative at 641-743-6146.

April 2 – Kelly Laughery 4-H Community Service Scholarship Must be a 4-H member and have completed service work. For more info contact Adair County Extension at 641-743-8412.

Regional Pork Conference

Area Pork Producers interested in learning more about pig comfort, energy efficiency and producer profits should plan to attend the 2010 Iowa Pork Regional Conference Wednesday, March 10, 1 to 4:30 p.m. at the Carrollton Inn, Carroll. Topics to be covered include ventilation and energy use on the farm by Mike Brumm, Brumm Swine Consultancy.

There is no cost for those preregistered by March 5. Walk-in registration is \$5 per person, payable at the door. More information, including a link to the program brochure, is available on the IPIC Web site at www.ipic.iastate.edu/events.html To preregister call IPPA at (800) 372-7675 or (515) 225-7675.

No Till DVD Available

Members of the Iowa Learning Farm team have created a DVD containing pointers for adjusting a planter for no-till farming systems. The “Converting Your Planter for No-till Operation” DVD contains instructions for getting optimum results from your planter in a no-till system. Information included: planting seed at a uniform depth, closing the furrow so that the seed is in proper contact with soil to start germination and maintaining uniform seed spacing. Other tips shown: leveling the planter frame, down pressure on depth gauge wheels, adjustments of seed openers and closing systems, and use of attachments such as row cleaners and fertilizer injectors. To request a FREE planter DVD, email the Iowa Learning Farm at ilf@iastate.edu, and be sure to include a mailing address; or write to Iowa Learning Farm, 2101 Agronomy Hall, Iowa State University, Ames, IA 50011.

Boots to Heels Conference

The 4th Boots to Heels Conference is Saturday, March 6th 8:00 am to 3:00 pm at the Cass County Community Center in Atlantic. Keynote speaker Brenda Clark-Hamilton encourages participants to be "Your Best Self- Freshly Brewed!"

Break-out workshop speakers will present information about investing, quilting, health and well-being, organization, photography, decorating and more.

Registration is \$35. Registration forms are available online at www.extension.iastate.edu/shelby

Wallace Foundation Meeting

The annual meeting of the Wallace Foundation for Rural Research and Development will be Fri. Feb 26 at the Armstrong Learning Center near Lewis. The program starts at 9:30 a.m. with the annual Armstrong and Neely-Kinyon Farm Review and Planning meeting. Greg Tylka, Iowa Corn and Soybean Initiative will be the guest speaker.

After a complimentary lunch a panel discussion “Futuring the Wallace Foundation” will be moderated by Ken Root and feature Wendy Wintersteen, John Lawrence, Randy Euken, Ron Rosmann, and Steve Killpack. At 4 p.m. the annual membership business meeting will be held.

Keeping your Sanity as A Parent

Raising a child is one of the most rewarding jobs you can ever have, but it can also be one of the most stressful. Barb Herr, Clinical Therapist with West Central Mental, will present information on the stressors of raising children and practical suggestions on how to get beyond the pressures at a special program on Tuesday, March 2 from 6:15-7:00 p.m. at the Family Supports Building (formerly Crook's Clothing) located at 226 Public Square in Greenfield.

The program is a joint effort of Growing Strong Families, Family Rewards, and Adair County Home Care. There is no cost, but advance sign up is requested by Monday, March 1st. You can RSVP by calling the Extension office at 743-8412 or 1-800-ISUE399. Free on-site child care is available.

Growing Strong Families

We are currently enrolling additional families in the very popular Growing Strong Families program. Any Adair County family that is expecting a child or has a child under the age of 5 can enroll in the free education program. Each month you get information specific to the developmental stage of your child along with tips on how to encourage their development.

Parent educators trained through the national Parents as Teachers Center work individually with each family. In addition, group programs and activities are offered on a regular basis.

For more information or to enroll, call Angie at the Extension office. Parents, grandparents, and anyone who cares for children are encouraged to become fans of **Growing Strong Families Adair County** at Facebook.com Fans get timely tips, information about upcoming programs, and links to wonderful resources.

Become a Fan of Adair County 4-H and Youth Programs



Get up to date information about what is happening in Adair County 4-H program by becoming a fan of Adair County 4-H and Youth programs at Facebook.com Current 4-H'ers, volunteers, parents, grandparents, and alumni will enjoy hearing about current programs as well as hearing from alumni.

4-H and FFA Adair County Fair Trophy Donors Needed

Sponsors are needed for 66 trophies to be presented to 4-H and FFA exhibitors during the 2010 Adair County Fair. Trophies are presented for livestock shows, livestock skill-a-thons, communication, clothing event winners.

Sponsorship fees are \$17.50 (large) and \$12 (Skill-A-Thon, Top FR/CS, Communications). Contact the Adair County Extension Office at 641-743-8412 or 1-800-ISUE399 or email wallaced@iastate.edu to become a trophy donor.



4-H Still Accepting Enrollments for 2010

Enrollments are still being accepted for the 4-H program. Youth can join the other 203 4th-12th graders already enrolled for 2010. Adair County offers 13 community clubs including a club which specializes in shooting sports. The program also offers independent membership for youth whose work, school, or church schedule makes it difficult to attend regular meetings.

For more information about how to get involved in the 4-H program, contact Donna Wallace at the Extension office wallaced@iastate.edu.

Adair County 4-H alumni report they have an edge in the job market and continue to use the communication, leadership, and citizenship skills throughout life.

Read more about 4-H alumni Matt Wedemeyer and Emily Ford Balvanz on the Adair County Extension website www.extension.iastate.edu/adair or at the Adair County 4-H and Youth Programs facebook page.



*EO-Extension Office

*FB-Family Support Building
(formerly Crook's Clothing)

March 2010

| Sun | Mon | Tue | Wed | Thu | Fri | Sat |
|----------------------------------|---|--|--|--|-----|---|
| | 1 IDALS pesticide license testing 2-7 p.m. Cass Co Extension office, Atlantic | 2 Crop Fair 9-12:30 PPAT 1:30-3:30 Orient Keeping Your Sanity as a Parent 6:15 -7 pm FSB* | 3 Commercial Ornamental Applicator,2,3 O, 3T, 1 O Training 1:30 pm E.O.* | 4 | 5 | 6 Clover Kids 10-11:30 am E.O.* |
| 7 4-H Youth Council 4:00 p.m. EO | 8 Financial Literacy Part 1 6-7pm FSB* | 9 Book Club, Family Story Teller grads, 6-7 pm FSB 4-H Leader Training 6:30-8:30 pm E.O.* | 10 | 11 | 12 | 13 |
| 14 | 15 Ag Day Expo Financial Literacy Part 2 6-7pm FSB* FSQA Training for 4-H&FFA 6:30-8:30 pm E.O.* | 16 | 17 | 18 FSQA Training for 4-H&FFA 6:30-8:30 pm E.O.* | 19 | 20 Corn and Soybean Association Banquet |
| 21 | 22 Financial Literacy Part 3, 6-7pm FSB* Extension Council 7:30 E.O.* | 23 | 24 | 25 | 26 | 27 |
| 28 | 29 Financial Literacy Part 4, 6-7pm FSB* | 30 | 31 | | | |