

ADAIR COUNTY EXTENSION AG NEWS

Volume 2 Issue 1

May/June 2009

SOFA XV

- June 5 - Interest Groups Area Tours - Ag Engineering, Beef, Dairy, Horticulture & Swine Workshop with Laurie Johns, IFBF Communications Director
- June 11 - Share what you learned at the Greenfield Farmers Market
- June 24 & 25 Bus Trip to Kansas City Stops include: POET Refinery; Bio-zyme; American Angus Assc.; Johnson County Community College; Cabelas; Kansas City Board of Trade; Harvesters; Powell Gardens
- Limited to 44 7th - 12th graders. Do not need to be 4-H member
- Registrations due May 15, cost \$35

Inside this issue:

<i>Pasture Management</i>	2
<i>MACEP Trial</i>	2
<i>Feedlot Conference</i>	2
<i>Hurry Up and Wait</i>	3
<i>Farm Bill Webcast</i>	3
<i>Calendars - May & June</i>	4 & 5
<i>Summer Stuff & Century Farms</i>	6

Extension Reorganization

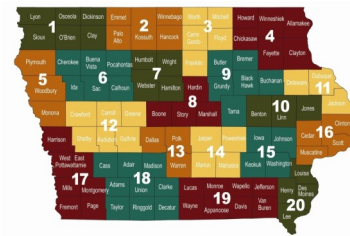
The Board of Regents recently approved a plan presented by Iowa State University for the restructuring of Extension. The plan will eliminate the position of County Extension Education Director throughout Iowa. County Directors will be replaced by a Regional Director. In the case of Adair County, this person will work with nine counties instead of one.

Details of the plan are located at <http://www.extension.iastate.edu/restructuring.htm>

If you would like to visit with someone about the potential impact on Adair County residents are encouraged to contact one of

your elected Extension Council members: John Havens, Steve Lilly, Karen Schulteis, Sondra Baudler, Sharon Doud, Michael Cooley, Randy Caviness, Jana Scott and Judy Wedemeyer.

A public meeting with ISU Extension Administrators will be held on Tuesday, May 19th at SWCC (room 180) in Creston from 12:30-2:00 p.m.



Livestock Budgets

Are you thinking about expanding your cow herd? Maybe you want to know how the price of corn will impact profit margins on finishing cattle or hogs.

Take a look at livestock enterprise budgets prepared by ISU. Enterprise budgets are available for swine, beef, sheep, swine, and dairy. You can request copies of the budgets from the Extension office or go on-line. If you go on-line you can actually plug in your own data to calculate your own break-even prices. Go to <http://www.extension.iastate.edu/agdm/>

Share Your Extension Story

Adair County Extension has impacted your life in ways large and small, visibly and behind the scenes. What is your Extension story? Did it begin with 4-H? Attending a PPAT training? Perhaps you participated in leasing meeting, Pro Ag Outlook,

Master Gardeners or the Horizons project. The staff and Extension Council have focused on meeting the needs of the citizens of Adair County. We encourage you to share how involvement in an Extension program has made a difference in

your life. Please share your story include name, program, dates, benefits, skills acquired and application. Drop us an email, write us a note and send pictures if you like by Monday, May 18.

Plan Pasture Management to Reduce Feed Costs

Superior pasture management is more important than ever in these times of higher feed costs, lower cattle prices, and tight margins. Historically, 60% of total cow calf production costs are attributed to feed. With today's feed and pasture costs, feeding the cow can calf may be 70% or more of total production costs.

A summary of the SPA records in Iowa and Illinois compiled for the years of 200-2004 found that over 57% of the farm to farm difference in profitability was explained by feed costs. That trend certainly has continued. What can you do to reduce these costs?

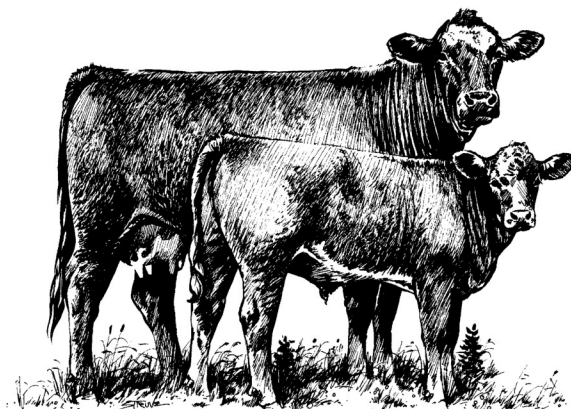
Almost any pasture management scheme that can extend grazing and reduce winter stored feed fed will improve the bottom line. These management practices could include –

- **Incorporate more rotational grazing.** If you can rotate pastures more, you can either carry more cows per acre or stockpile more forage for fall and winter feed.
- **Introduce more legumes into the mix.** Rotational grazing will help you keep legumes in the mix and encourage the legumes in the stand. Adequate rest periods are essential for legume stands, particularly short lived perennials like birdsfoot trefoil.
- **Manage fescue appropriately.** This includes grazing a little earlier and harder on fescue pastures to keep them from forming seed heads, not over applying nitrogen in the spring when the alkaloids can be increased, and using nitrogen in the late summer to stockpile more grass for fall and winter access.

- **Wean calves earlier.** Removing the calf from a cow in late lactation will greatly reduce the amount of pasture required per cow and add needed body condition to the cow. You will need good preparation to manage the young weaned calves, but these calves can be highly efficient in the performance.

Cull cows as needed. Non-productive cows eat about as much feed as your best producers. Cull older cows as needed, and evaluate your herd each fall for “problem cows” when you are preg checking. Effective cull cow marketing is an important part of your income flow.

If you want assistance with ration planning, evaluating your grazing system, or other management ideas, contact your local ISU Extension beef specialist. You can contact me at 641-203-1270 or e-mail sellers@iastate.edu.



Celebrate May Beef Month

MACEP Trial May 22

The MACEP cattle evaluation program, a producer led opportunity to retain ownership on local produced calves and collect important carcass and performance data, for the first time will start a new group in early June, primarily consisting of fall born calves. The cattle will be fed at the Chris Petty feedyard south of Leon, Iowa. The group works with the Tri County Steer Carcass Futurity program to manage the database, keep track and split feed bills, and collect and present the carcass data results. Cattle are sold on a grid at the Tyson plant in Denison, Iowa. Qualified producers may be able to receive export premiums on age verified calves (training a record keeping is required).

Entries must be made by May 22, 2009. For more information call Joe Sellers at 641-203-1270, or Chris Petty at 641-442-5626.

A New Era of Management • People, Cattle, Business

The Iowa Beef Center along with the Iowa Cattlemen's Association are holding a summer conference for feedlot operations, “Cattle Feeder's Conference: A New Era of Management - People, Cattle, Business” June 10 & 11 at the Holiday Inn in Ames.

The conference will focus on making marketing decisions based on the current internal and external forces that impact cattle feeders. To learn more about the event and to register got to www.iowabeefcenter.org

Hurry Up and Wait by Aaron Saeugling

This seems to be the progress of the 2009 crop season here in Adair County. Most corn has been planted and a few soybeans are in the ground. Temperature is a key factor to crop growth this season and has caused slow emergence across the county. We all know, now is the time to plant when Mother Nature gives us a chance to get back in the field.

For corn, it is very important to go look at our stands after the heavy rains we experienced. I have a corn plot planted on the Neely- Kinyon research farm that was no till planted on April 22 into soybean stubble. This corn has a ½-inch sprout and is pushing a ¼ crust as of the writing of this article today. One thing we will experience this year is the possibility of rootless corn. Our corn was planted 2" deep, but with all the heavy rain now is only 1" to 1½" deep, so remember to check the depth on fields planted prior to the heavy rain. Another thing to consider is any herbicide applications after planting and possible affects on the germinating seed. Currently the black cutworm trap has caught only 13 moths to date, but I expect more moths to be on the way.

Soybeans are now on the target list to be planted for most growers. Research tells us, the time to plant soybeans in Adair County is after April 25th. I encourage growers to plant as soon as soil conditions are fit, so seed to soil contact can be maximized. The soybean planting date study started on April 16th, yes I said April 16th. Did I mention this is an experiment? After 19 days, we now see life from the early-planted beans despite the cool temperatures. The soybeans look remarkably good and just need some warm weather.

One final note, if you have questions on agronomy topics feel free to contact the Adair County Extension office, for they will be quick to get you in touch with me or answer your questions directly. If you would like to view the research plots on the Neely-Kinyon farm, let us know and we would be glad to give you a tour or watch for any upcoming field days.

ISU Field Agronomist Aaron Saeugling can be reached at clonz5@iastate.edu

Switchgrass Mulch

The Cass County Master Gardeners are offering switchgrass bales to use as mulch in your garden and yard. The switchgrass is versatile as mulch around trees, vegetables, flowers and as paths in the garden. Benefits include:

- Retards weed growth
- Retains moisture
- Stays put even on the windy hills
- Can be used as paths through the garden
- Is biodegradable if turned under
- Only needs top dressing if kept in place

The Cass County Master Gardeners are selling the 50 lb. bales to raise money for the group's community service work. The switchgrass project is a cooperative effort between the Master Gardeners, Recycling Systems, and the Armstrong Research Farm.

Switchgrass bales are \$5 if picked at the Armstrong Farm. If you are interested in buying some bales or if you have questions, please contact Catherine Booth at 712-249-5645 or email cbooth@metc.net.

2009 Cash Rental Rates

Cash Rental Rate Survey are now available at the Adair Count Extension office or online at the Ag Decision Makers website.

<http://www.extension.iastate.edu/agdm/wholefarm/pdf/c2-10.pdf>

Farm Bill Webcast June 15

Iowa Farm Bureau Federation along with Iowa Corn Growers Association, Iowa Soybean Association, Iowa State University and USDA Farm Service Agency are sponsoring Farm Bill Webcast: Updated information on ACRE and Program Eligibility Monday, June 15, 7:00 p.m. The

Adair County Extension office in Greenfield will be one of the host sites.

Speakers and topics are: Program Eligibility and Payment Limitations - Kevin McClure, USDA Farm Service Agency; Average Crop Revenue Election

(ACRE) - Chad Hart, Iowa State University;

ACRE Example with Crop Risk Model - Sterling Liddell, Iowa Farm Bureau Participants will be able to type questions to the speaker during the webcast.

May 2009

*EO-Extension Office
 *FR-Family Rewards Building

Sun	Mon	Tue	Wed	Thu	Fri	Sat
					1	2
3	4	5	6	7	8	9
10	11	12	13	14	15 ID Sheets & SOFA registrations due to the Extension office 7:30 am - 7:00 pm	16
17	18	19 Extension Regional Info Meeting, SWCC Rm 180, Creston	20 Horse practice, 6:30 pm, Fairgrounds Youth Action Committee 7:00 pm EO*	21	22	23 Lamb Clinic 10 am - noon Fairgrounds
24	25 Memorial Day office closed	26 Dog Classes, 6:30 pm, Fairgrounds	27 Horse practice, 6:30 pm, Fairgrounds Extension Council 7:30 pm EO*	28 Elements & Principles of Design Workshop, 6 – 7:30 pm, 4-H/FFA Center	29 Registrations due for State Shooting Sports Match	30 Garden Twitter Luncheon 11:30-1:30 \$12.50 Orient Youth Council Bake Sale Pamida, 9-11a
31						

June 2009

*EO-Extension Office
 *FR-Family Rewards Building

Sun	Mon	Tue	Wed	Thu	Fri	Sat
	1	2 Keeping Your Child Healthy, 5:15-6:00 pm, FRB Dog Classes, 6:30 pm, Fairgrounds	3 Horse practice, 6:30 pm, Fairgrounds	4 Grove Champions host Farmer's Market, Greenfield Family Storyteller, 6-7 pm, *EO	5 SOFA Interest Groups Tours/ Workshops 9:30 - 3	6 Clover Kids 10-11:30 EO* Photography Workshop 9-10:30, 4-H/FFA Center
7 4-H Youth Council Ronald McDonald House	8	9 Book Club, FRB, 6:15-7:00 pm Dog Classes, 6:30 pm, Fairgrounds	10 Horse practice, 6:30 pm, Fairgrounds	11 SOFA 4-6 pm Greenfield Farmers Market Family Storyteller 6-7 pm, *EO	12	13
14	15 Farm Bill Web-cast 7-9 pm, EO*	16 Breastfeeding Basics 5:15-6:30 pm, FRB Dog Classes, 6:30 pm, Fairgrounds	17 Horse practice, 6:30 pm, Fairgrounds	18 Family Storyteller 6-7 pm, *EO	19	20 "Gardens of Madison County" garden tour 8:30-12:30 \$20
21	22 Extension Council	23 Dog Classes, 6:30 pm, Fairgrounds	24 SOFA Trip Kansas City Horse practice, 6:30 pm, Fairgrounds	25 Family Storyteller 6-7 pm, *EO	26	27
28	29	30 State 4-H Conference ISU campus, Ames June 30 - July 2 Dog Classes, 6:30 pm Fairgrounds				

ISU EXTENSION - ADAIR COUNTY

202 South 1st Street, Suite B
Greenfield, IA 50849
Phone: 641-743-8412/1-800-ISUE-399
Fax: 641-743-0023
E-mail: krohrig@iastate.edu

Extension programs are available to all without regard to race, color, national origin, religion, sex, age or disability.

Check out our website—

www.extension.iastate.edu/adair/

Websites:

www.extension.iastate.edu/CropNews

Updated nearly daily.

Recent articles, crop report, Funding for Organic Production, Check alfalfa for Foliar Diseases, Bean Leaf Beetles



ISU STATE UNIVERSITY

Beef and Pork Whole Animal Buying Guide (PM 2076) Is a publication that will help people understand the various cuts of meat and that the total animal weight is not equal to the pounds of processed meat. Also included in the publication is information on safe storage and handling. The cost of PM 2076 is \$6.50 and can be ordered through the Adair County Extension office or online at www.extension.iastate.edu/store.



SAVE THE DATE

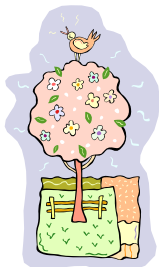
Iowa Women in Agriculture 3rd Annual Conference

“Keeping Up With the Changing Times”

Bio Future Conference Center-Huxley, Iowa
July 30th, 2009 8:00 am to 5:00

For conference information www.iowawomeninag.org

Garden Luncheons & Tours



Orient Friends of the Library

Garden Twitter Luncheon
Orient United Methodist Church
Saturday, May 30 11:30 – 1:30
Speaker: Margaret Augustine
Topic: Plants to bring birds to your yard
Cost: \$12.50
1 hour Master Gardener credit
Plant Sale @ 118 Jackson following

Madison County Master Gardeners

“The Gardens of Madison County”

Winterset, Iowa

Saturday, June 20

8:30 – 12:30 & 9:00 – 1:00

Featuring Fons & Porter Quilts

Cost: \$20 Registration due June 5

Call Madison County Extension 515 462-1001



Sensational Summer for Kids

Adair County Extension is once again offering summer day camps and programs for kids K-12th. The program features everything from a literacy program for parents/grandparents and preschoolers to a trip to Adventureland for middle school kids interested in physics. A complete listing of the programs is enclosed. If you don't have children or grandchildren, share the list with a friend. Descriptions and registration forms are available at the Extension office or can be downloaded at <http://www.extension.iastate.edu/adair/news/summer2009.htm>

Century Farm Apps due June 1

Iowa Secretary of Agriculture Bill Northey encourages eligible farms to apply for the 2009 Century and Heritage Farm program. This program is sponsored by the Iowa Department of Agriculture and Land Stewardship and the Iowa Farm Bureau and recognizes families that have owned their farm for 100 years in case of Century Farms and 150 years for Heritage Farms. The application may be obtained online at: www.agriculture.state.ia.us/centuryFarmsProgram.asp and www.agriculture.state.ia.us/heritageFarmsProgram.asp. If you don't have access to internet, the Adair County Extension office would be glad to print off an application for you. Completed applications can be returned to: Janet Lee, Heritage or Century Farms Program, The Iowa Department of Agriculture and Land Stewardship, Henry A. Wallace Building, 502 E. 9th St., Des Moines, IA 50319. Applications must be postmarked no later than June 1.