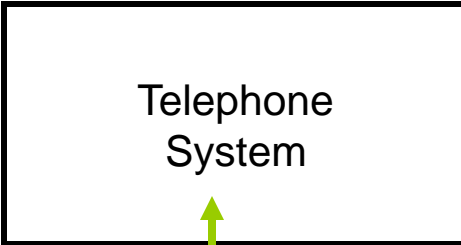
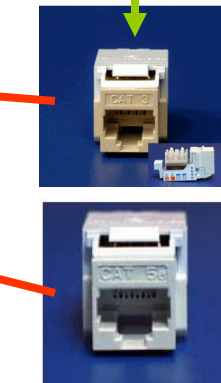
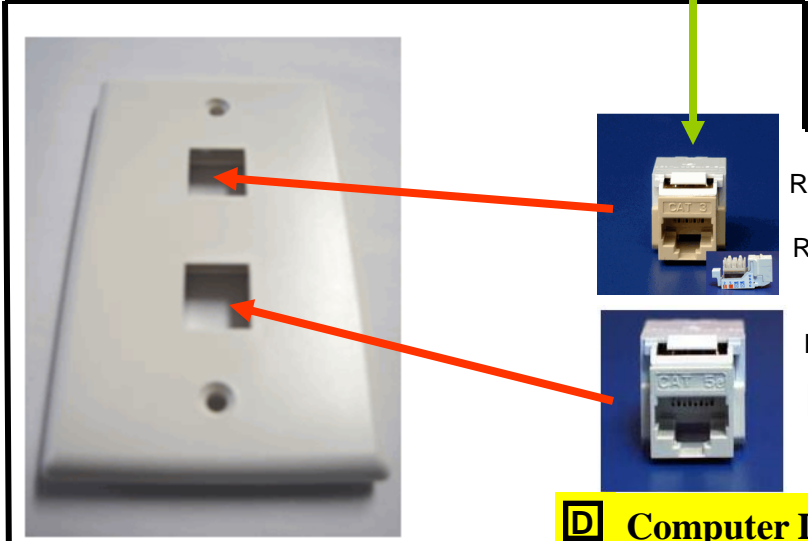


Local Area Network designed by Extension Information Technology. Installation of, and payment for telephone network and computer network is the responsibility of the Landlord, Contractors and the Extension office by any agreement they may enter into.



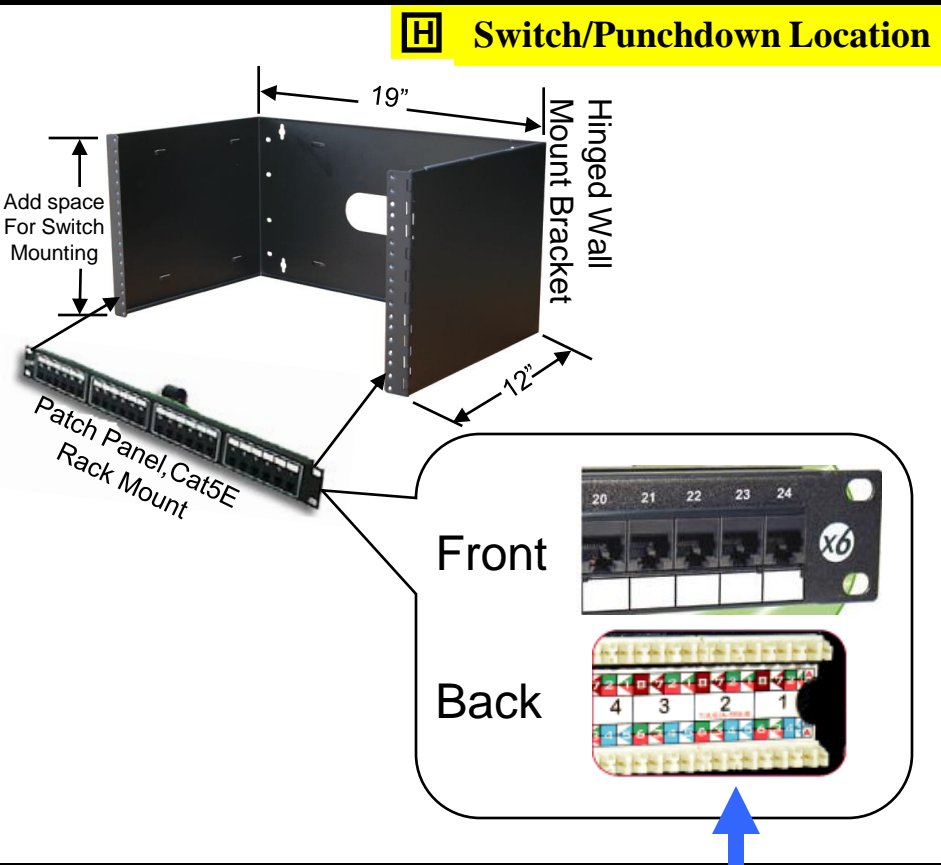
Cable type and punch Down to be specified By Telephone System



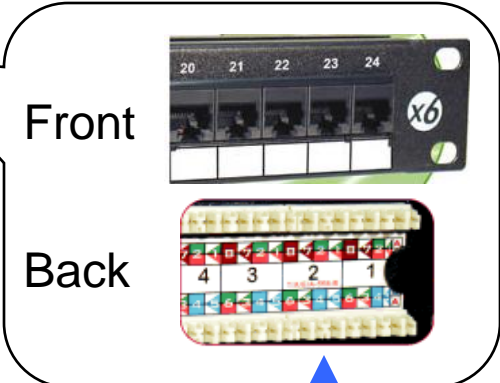
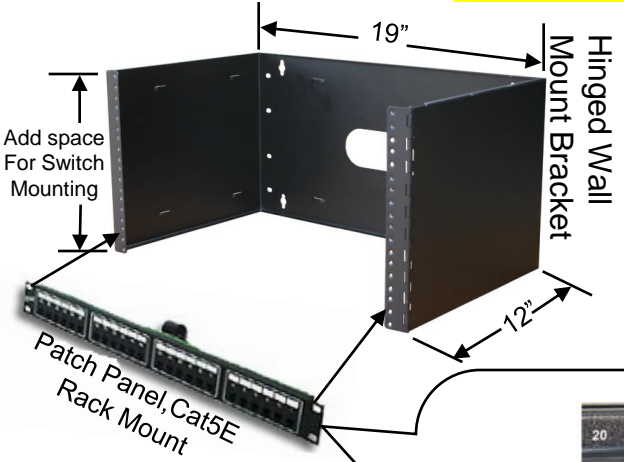
RJ11
or
RJ45

RJ45
Back

D Computer Drop



H Switch/Punchdown Location



Front

Back

Punch Down
Pattern "B"



Category 5 or 6
Ethernet Cable