

Table 1. July Bean Basis for Northwest Iowa.

Mo/Wk	July			2009/10	2010/11	Mo/Wk	July			2009/10	2010/11
	Avg	Min	Max				Avg	Min	Max		
OCT 1	-1.12	-0.56	-1.54	-0.56	-1.02	FEB 4	-0.82	-0.50	-1.28	-0.60	-0.79
OCT 2	-1.07	-0.49	-1.44	-0.49	-1.07	MAR 1	-0.78	-0.42	-1.23	-0.62	-0.73
OCT 3	-1.04	-0.52	-1.44	-0.52	-1.10	MAR 2	-0.80	-0.40	-1.38	-0.62	-0.72
OCT 4	-0.89	-0.39	-1.35	-0.39	-0.96	MAR 3	-0.81	-0.51	-1.42	-0.60	-0.70
NOV 1	-0.91	-0.58	-1.35	-0.58	-0.94	MAR 4	-0.78	-0.52	-1.27	-0.57	-0.72
NOV 2	-0.90	-0.69	-1.14	-0.69	-1.02	APR 1	-0.77	-0.53	-1.20	-0.62	-0.71
NOV 3	-0.82	-0.68	-1.08	-0.68	-0.76	APR 2	-0.64	-0.47	-0.80	-0.59	-0.66
NOV 4	-0.83	-0.72	-1.11	-0.72	-0.74	APR 3	-0.73	-0.49	-0.99	-0.55	-0.83
DEC 1	-0.83	-0.70	-1.09	-0.76	-0.70	APR 4	-0.64	-0.47	-0.88	-0.56	-0.53
DEC 2	-0.85	-0.69	-1.16	-0.76	-0.69	MAY 1	-0.59	-0.43	-0.78	-0.55	-0.43
DEC 3	-0.89	-0.75	-1.21	-0.75	-0.76	MAY 2	-0.56	-0.37	-0.77	-0.49	-0.37
DEC 4	-0.88	-0.73	-1.29	-0.75	-0.73	MAY 3	-0.54	-0.34	-0.81	-0.42	-0.34
JAN 1	-0.88	-0.70	-1.30	-0.70	-0.75	MAY 4	-0.53	-0.33	-0.78	-0.36	-0.33
JAN 2	-0.92	-0.71	-1.42	-0.71	-0.80	JUN 1	-0.53	-0.35	-0.78	-0.36	-0.35
JAN 3	-0.97	-0.70	-1.58	-0.70	-0.87	JUN 2	-0.60	-0.33	-0.80	-0.33	-0.41
JAN 4	-0.94	-0.72	-1.45	-0.72	-0.86	JUN 3	-0.57	-0.30	-0.87	-0.30	-0.41
FEB 1	-0.87	-0.58	-1.32	-0.70	-0.83	JUN 4	-0.60	-0.39	-0.88	-0.39	-0.40
FEB 2	-0.85	-0.57	-1.29	-0.63	-0.80	JUL 1	-0.67	-0.40	-0.96	-0.43	-0.40
FEB 3	-0.85	-0.52	-1.37	-0.63	-0.79	JUL 2	-0.69	-0.27	-1.00	-0.27	-0.43

Figure 1. July Bean Basis for Northwest Iowa 2009/10 - 2010/11 - Avg, Max, Min.

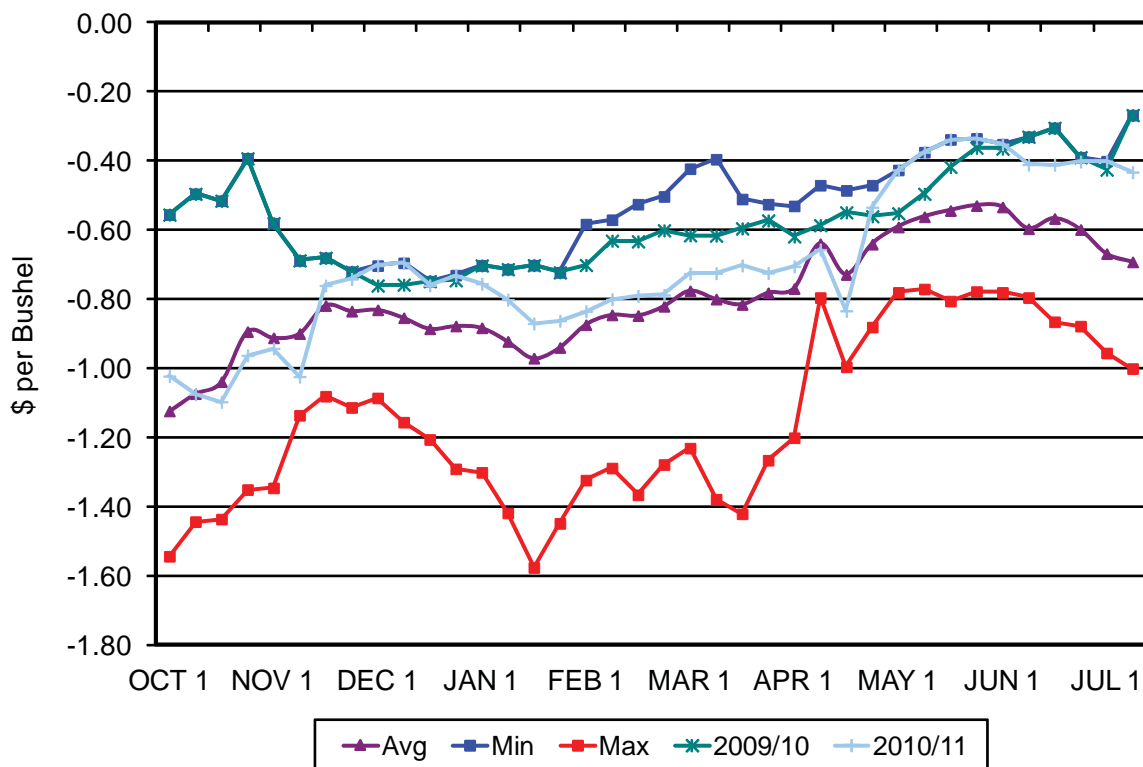


Table 2. July Bean Basis for North Central Iowa.

Mo/Wk	July			2009/10	2010/11	Mo/Wk	July			2009/10	2010/11
	Avg	Min	Max				Avg	Min	Max		
OCT 1	-1.13	-0.54	-1.53	-0.54	-1.00	FEB 4	-0.83	-0.55	-1.21	-0.65	-0.79
OCT 2	-1.08	-0.49	-1.43	-0.49	-1.02	MAR 1	-0.79	-0.46	-1.25	-0.64	-0.73
OCT 3	-1.04	-0.53	-1.41	-0.53	-1.04	MAR 2	-0.82	-0.45	-1.38	-0.64	-0.74
OCT 4	-0.83	-0.20	-1.24	-0.20	-0.91	MAR 3	-0.77	-0.56	-1.05	-0.62	-0.73
NOV 1	-0.87	-0.55	-1.16	-0.55	-0.93	MAR 4	-0.81	-0.57	-1.30	-0.59	-0.74
NOV 2	-0.90	-0.67	-1.07	-0.67	-1.03	APR 1	-0.79	-0.55	-1.25	-0.60	-0.71
NOV 3	-0.81	-0.63	-1.04	-0.63	-0.76	APR 2	-0.67	-0.51	-0.84	-0.60	-0.70
NOV 4	-0.83	-0.67	-1.09	-0.67	-0.74	APR 3	-0.79	-0.59	-1.10	-0.59	-0.89
DEC 1	-0.86	-0.70	-1.14	-0.76	-0.70	APR 4	-0.70	-0.51	-0.99	-0.60	-0.57
DEC 2	-0.87	-0.69	-1.19	-0.77	-0.69	MAY 1	-0.64	-0.47	-0.89	-0.55	-0.52
DEC 3	-0.89	-0.72	-1.24	-0.75	-0.72	MAY 2	-0.63	-0.48	-0.88	-0.53	-0.48
DEC 4	-0.89	-0.71	-1.28	-0.75	-0.71	MAY 3	-0.60	-0.45	-0.88	-0.47	-0.45
JAN 1	-0.89	-0.73	-1.27	-0.73	-0.77	MAY 4	-0.57	-0.41	-0.84	-0.43	-0.41
JAN 2	-0.94	-0.75	-1.39	-0.75	-0.82	JUN 1	-0.57	-0.39	-0.83	-0.40	-0.41
JAN 3	-0.98	-0.72	-1.55	-0.72	-0.90	JUN 2	-0.63	-0.38	-0.86	-0.38	-0.44
JAN 4	-0.95	-0.75	-1.43	-0.75	-0.87	JUN 3	-0.59	-0.29	-0.91	-0.29	-0.43
FEB 1	-0.89	-0.64	-1.31	-0.75	-0.81	JUN 4	-0.61	-0.38	-0.92	-0.38	-0.41
FEB 2	-0.87	-0.62	-1.28	-0.68	-0.80	JUL 1	-0.68	-0.39	-0.99	-0.39	-0.41
FEB 3	-0.86	-0.57	-1.33	-0.68	-0.79	JUL 2	-0.72	-0.27	-1.04	-0.27	-0.42

Figure 2. July Bean Basis for North Central Iowa 2009/10 - 2010/11 - Avg, Max, Min.

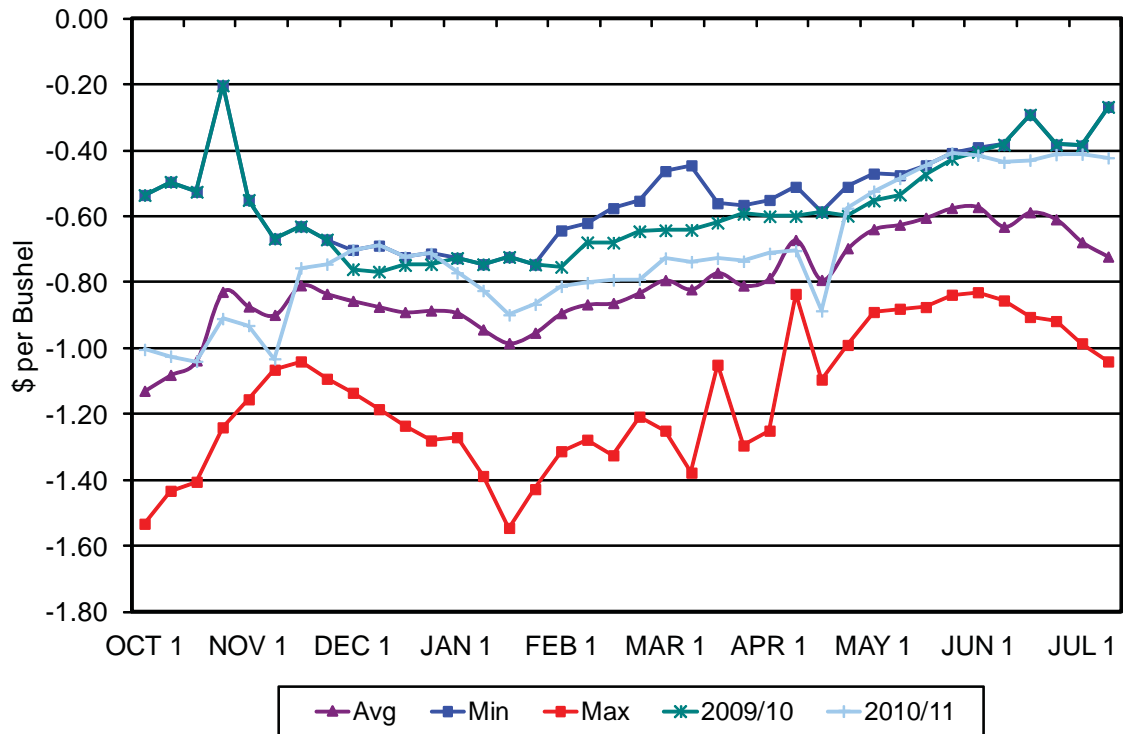


Table 3. July Bean Basis for Northeast Iowa.

Mo/Wk	July					Mo/Wk	July				
	Avg	Min	Max	2009/10	2010/11		Avg	Min	Max	2009/10	2010/11
OCT 1	-1.16	-0.52	-1.50	-0.52	-1.09	FEB 4	-0.84	-0.51	-1.17	-0.68	-0.85
OCT 2	-1.07	-0.37	-1.39	-0.37	-1.10	MAR 1	-0.76	-0.29	-1.23	-0.60	-0.77
OCT 3	-1.02	-0.44	-1.35	-0.44	-1.06	MAR 2	-0.79	-0.23	-1.40	-0.59	-0.79
OCT 4	-0.84	-0.34	-1.20	-0.34	-0.89	MAR 3	-0.74	-0.32	-1.10	-0.59	-0.75
NOV 1	-0.88	-0.61	-1.03	-0.61	-0.91	MAR 4	-0.77	-0.37	-1.28	-0.58	-0.71
NOV 2	-0.88	-0.74	-0.99	-0.74	-0.99	APR 1	-0.73	-0.39	-1.20	-0.55	-0.68
NOV 3	-0.77	-0.60	-0.96	-0.63	-0.60	APR 2	-0.61	-0.34	-0.89	-0.60	-0.62
NOV 4	-0.82	-0.64	-1.01	-0.72	-0.64	APR 3	-0.71	-0.32	-1.01	-0.58	-0.81
DEC 1	-0.87	-0.66	-1.12	-0.81	-0.66	APR 4	-0.64	-0.35	-0.92	-0.54	-0.54
DEC 2	-0.88	-0.67	-1.17	-0.80	-0.67	MAY 1	-0.60	-0.25	-0.91	-0.60	-0.50
DEC 3	-0.90	-0.71	-1.22	-0.75	-0.71	MAY 2	-0.57	-0.24	-0.89	-0.52	-0.46
DEC 4	-0.90	-0.72	-1.29	-0.79	-0.72	MAY 3	-0.55	-0.23	-0.90	-0.42	-0.40
JAN 1	-0.92	-0.72	-1.32	-0.72	-0.81	MAY 4	-0.56	-0.27	-0.92	-0.33	-0.43
JAN 2	-1.00	-0.77	-1.43	-0.77	-0.88	JUN 1	-0.55	-0.27	-0.93	-0.28	-0.45
JAN 3	-1.02	-0.72	-1.52	-0.72	-0.94	JUN 2	-0.58	-0.26	-0.92	-0.26	-0.46
JAN 4	-0.96	-0.75	-1.36	-0.75	-0.86	JUN 3	-0.57	-0.26	-0.93	-0.26	-0.49
FEB 1	-0.87	-0.63	-1.27	-0.72	-0.77	JUN 4	-0.55	-0.23	-0.92	-0.32	-0.48
FEB 2	-0.85	-0.61	-1.22	-0.65	-0.84	JUL 1	-0.61	-0.32	-1.00	-0.35	-0.43
FEB 3	-0.86	-0.53	-1.31	-0.68	-0.84	JUL 2	-0.67	-0.16	-1.18	-0.16	-0.44

Figure 3. July Bean Basis for Northeast Iowa 2009/10 - 2010/11 - Avg, Max, Min.

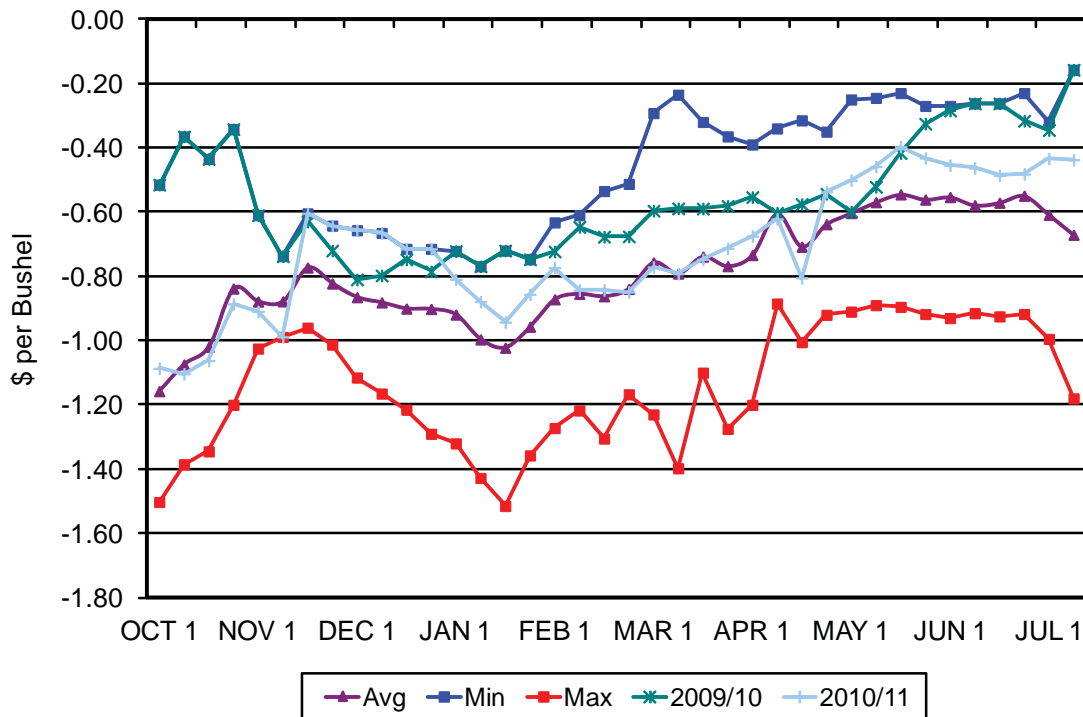


Table 4. July Bean Basis for Southeast Iowa.

Mo/Wk	Avg	Min	Max	2009/10	2010/11	Mo/Wk	Avg	Min	Max	2009/10	2010/11
OCT 1	-1.00	-0.32	-1.37	-0.32	-0.90	FEB 4	-0.71	-0.33	-1.07	-0.55	-0.74
OCT 2	-0.91	-0.25	-1.24	-0.25	-0.88	MAR 1	-0.64	-0.14	-1.13	-0.54	-0.63
OCT 3	-0.85	-0.23	-1.17	-0.23	-0.91	MAR 2	-0.74	-0.20	-1.38	-0.56	-0.70
OCT 4	-0.71	-0.21	-1.09	-0.21	-0.73	MAR 3	-0.67	-0.17	-1.13	-0.56	-0.65
NOV 1	-0.83	-0.49	-1.11	-0.49	-0.80	MAR 4	-0.68	-0.23	-1.17	-0.55	-0.60
NOV 2	-0.82	-0.75	-0.92	-0.75	-0.92	APR 1	-0.64	-0.30	-1.11	-0.47	-0.59
NOV 3	-0.66	-0.40	-0.87	-0.56	-0.40	APR 2	-0.51	-0.25	-0.79	-0.53	-0.52
NOV 4	-0.67	-0.44	-0.83	-0.63	-0.44	APR 3	-0.60	-0.24	-0.90	-0.49	-0.67
DEC 1	-0.67	-0.45	-0.90	-0.70	-0.45	APR 4	-0.51	-0.25	-0.73	-0.46	-0.39
DEC 2	-0.75	-0.48	-1.02	-0.71	-0.48	MAY 1	-0.50	-0.12	-0.75	-0.50	-0.38
DEC 3	-0.79	-0.60	-1.06	-0.74	-0.60	MAY 2	-0.47	-0.11	-0.87	-0.40	-0.33
DEC 4	-0.79	-0.63	-1.07	-0.75	-0.63	MAY 3	-0.43	-0.09	-0.82	-0.27	-0.29
JAN 1	-0.79	-0.67	-1.07	-0.70	-0.67	MAY 4	-0.44	-0.12	-0.84	-0.20	-0.30
JAN 2	-0.85	-0.68	-1.24	-0.68	-0.73	JUN 1	-0.44	-0.15	-0.83	-0.16	-0.32
JAN 3	-0.89	-0.64	-1.34	-0.64	-0.76	JUN 2	-0.46	-0.15	-0.81	-0.15	-0.30
JAN 4	-0.84	-0.66	-1.15	-0.66	-0.72	JUN 3	-0.43	-0.15	-0.76	-0.15	-0.32
FEB 1	-0.74	-0.47	-1.06	-0.63	-0.67	JUN 4	-0.40	-0.14	-0.73	-0.19	-0.31
FEB 2	-0.71	-0.41	-1.08	-0.53	-0.67	JUL 1	-0.45	-0.21	-0.80	-0.25	-0.28
FEB 3	-0.72	-0.32	-1.17	-0.55	-0.74	JUL 2	-0.49	-0.08	-1.01	-0.08	-0.29

Figure 4. July Bean Basis for Southeast Iowa 2009/10 - 2010/11 - Avg, Max, Min.

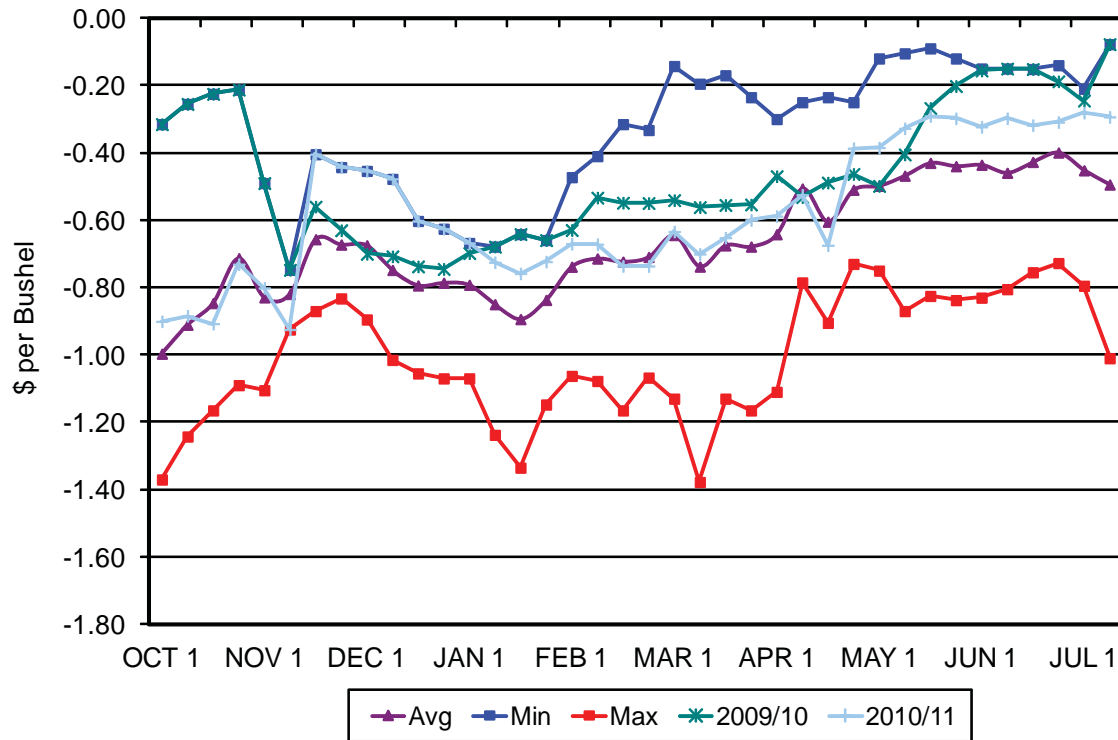


Table 5. July Bean Basis for South Central Iowa.

Mo/Wk	July			2009/10	2010/11	Mo/Wk	July			2009/10	2010/11
	Avg	Min	Max				Avg	Min	Max		
OCT 1	-1.11	-0.48	-1.46	-0.48	-1.07	FEB 4	-0.79	-0.47	-1.22	-0.58	-0.76
OCT 2	-1.05	-0.48	-1.35	-0.48	-1.05	MAR 1	-0.74	-0.38	-1.17	-0.59	-0.71
OCT 3	-1.00	-0.54	-1.35	-0.54	-1.00	MAR 2	-0.78	-0.35	-1.37	-0.58	-0.71
OCT 4	-0.83	-0.36	-1.21	-0.36	-0.86	MAR 3	-0.73	-0.48	-1.05	-0.56	-0.70
NOV 1	-0.84	-0.54	-1.18	-0.54	-0.86	MAR 4	-0.75	-0.47	-1.24	-0.54	-0.72
NOV 2	-0.87	-0.70	-1.06	-0.70	-0.97	APR 1	-0.75	-0.50	-1.23	-0.55	-0.66
NOV 3	-0.77	-0.56	-1.04	-0.56	-0.71	APR 2	-0.62	-0.46	-0.85	-0.55	-0.62
NOV 4	-0.80	-0.62	-1.09	-0.62	-0.71	APR 3	-0.71	-0.44	-0.99	-0.53	-0.77
DEC 1	-0.80	-0.66	-1.10	-0.69	-0.66	APR 4	-0.63	-0.44	-0.92	-0.54	-0.44
DEC 2	-0.82	-0.65	-1.16	-0.71	-0.65	MAY 1	-0.58	-0.39	-0.79	-0.56	-0.39
DEC 3	-0.84	-0.67	-1.20	-0.67	-0.67	MAY 2	-0.55	-0.35	-0.84	-0.45	-0.35
DEC 4	-0.83	-0.67	-1.24	-0.67	-0.67	MAY 3	-0.51	-0.28	-0.82	-0.38	-0.28
JAN 1	-0.86	-0.68	-1.28	-0.68	-0.75	MAY 4	-0.50	-0.28	-0.77	-0.34	-0.28
JAN 2	-0.92	-0.70	-1.35	-0.70	-0.83	JUN 1	-0.51	-0.32	-0.82	-0.32	-0.32
JAN 3	-0.96	-0.69	-1.50	-0.69	-0.90	JUN 2	-0.55	-0.30	-0.82	-0.30	-0.35
JAN 4	-0.92	-0.71	-1.41	-0.71	-0.85	JUN 3	-0.52	-0.22	-0.86	-0.22	-0.42
FEB 1	-0.85	-0.57	-1.27	-0.70	-0.80	JUN 4	-0.52	-0.28	-0.87	-0.28	-0.34
FEB 2	-0.82	-0.54	-1.24	-0.60	-0.77	JUL 1	-0.60	-0.32	-0.95	-0.32	-0.32
FEB 3	-0.81	-0.49	-1.30	-0.60	-0.76	JUL 2	-0.65	-0.18	-1.01	-0.18	-0.36

Figure 5. July Bean Basis for South Central Iowa 2009/10 - 2010/11 - Avg, Max, Min.

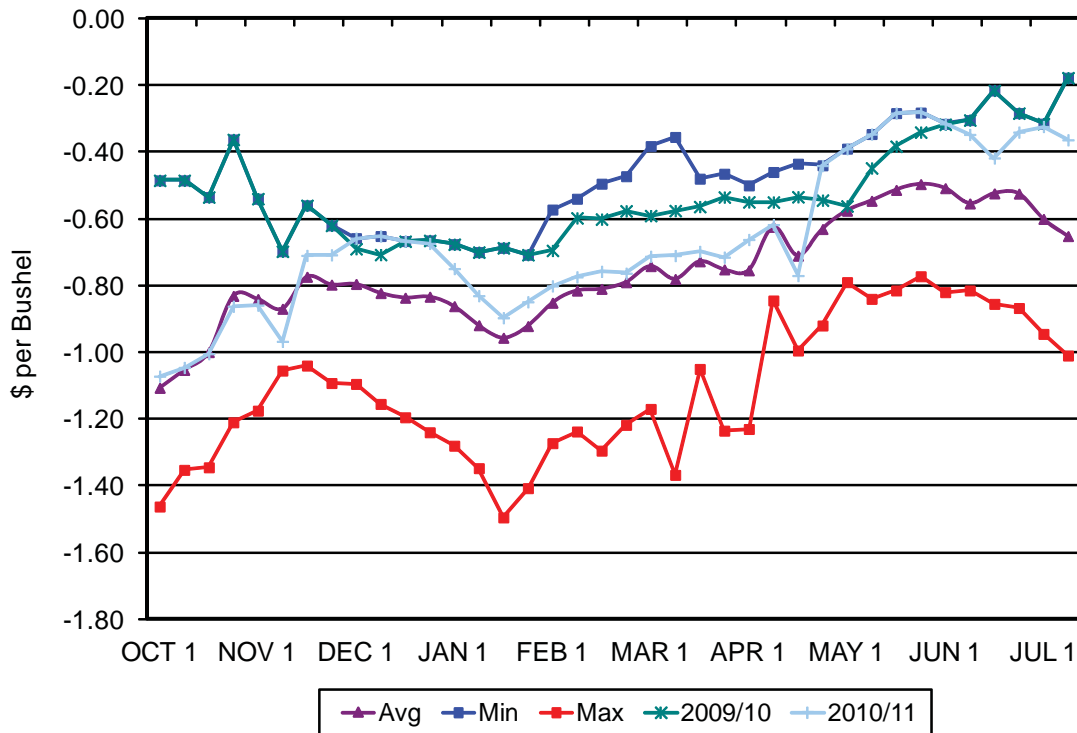


Table 6. July Bean Basis for Southwest Iowa.

Mo/Wk	July			2009/10	2010/11	Mo/Wk	July			2009/10	2010/11
	Avg	Min	Max				Avg	Min	Max		
OCT 1	-1.12	-0.52	-1.55	-0.52	-1.08	FEB 4	-0.83	-0.47	-1.36	-0.59	-0.75
OCT 2	-1.08	-0.49	-1.41	-0.49	-1.14	MAR 1	-0.77	-0.38	-1.33	-0.60	-0.67
OCT 3	-1.03	-0.49	-1.42	-0.49	-1.14	MAR 2	-0.76	-0.34	-1.40	-0.57	-0.65
OCT 4	-0.88	-0.38	-1.36	-0.38	-0.97	MAR 3	-0.77	-0.46	-1.42	-0.54	-0.63
NOV 1	-0.89	-0.62	-1.28	-0.62	-0.94	MAR 4	-0.76	-0.49	-1.32	-0.57	-0.64
NOV 2	-0.92	-0.75	-1.23	-0.75	-1.03	APR 1	-0.76	-0.49	-1.24	-0.57	-0.62
NOV 3	-0.83	-0.69	-1.19	-0.69	-0.74	APR 2	-0.61	-0.44	-0.89	-0.51	-0.57
NOV 4	-0.84	-0.70	-1.23	-0.70	-0.74	APR 3	-0.70	-0.44	-1.02	-0.47	-0.70
DEC 1	-0.82	-0.66	-1.12	-0.76	-0.70	APR 4	-0.62	-0.39	-0.96	-0.47	-0.39
DEC 2	-0.84	-0.63	-1.25	-0.73	-0.69	MAY 1	-0.56	-0.34	-0.86	-0.43	-0.34
DEC 3	-0.86	-0.65	-1.27	-0.71	-0.75	MAY 2	-0.52	-0.24	-0.89	-0.36	-0.24
DEC 4	-0.86	-0.61	-1.30	-0.69	-0.74	MAY 3	-0.50	-0.20	-0.87	-0.30	-0.20
JAN 1	-0.89	-0.67	-1.39	-0.70	-0.79	MAY 4	-0.47	-0.20	-0.80	-0.24	-0.20
JAN 2	-0.93	-0.70	-1.49	-0.70	-0.84	JUN 1	-0.53	-0.21	-0.94	-0.21	-0.35
JAN 3	-1.00	-0.68	-1.66	-0.68	-0.93	JUN 2	-0.60	-0.20	-0.98	-0.20	-0.45
JAN 4	-0.96	-0.68	-1.61	-0.68	-0.87	JUN 3	-0.55	-0.15	-0.96	-0.15	-0.41
FEB 1	-0.89	-0.52	-1.48	-0.69	-0.79	JUN 4	-0.54	-0.27	-0.90	-0.28	-0.27
FEB 2	-0.86	-0.54	-1.40	-0.64	-0.77	JUL 1	-0.63	-0.30	-0.96	-0.32	-0.30
FEB 3	-0.85	-0.49	-1.47	-0.63	-0.75	JUL 2	-0.64	-0.25	-1.00	-0.25	-0.40

Figure 6. July Bean Basis for Southwest Iowa 2009/10 - 2010/11 - Avg, Max, Min.

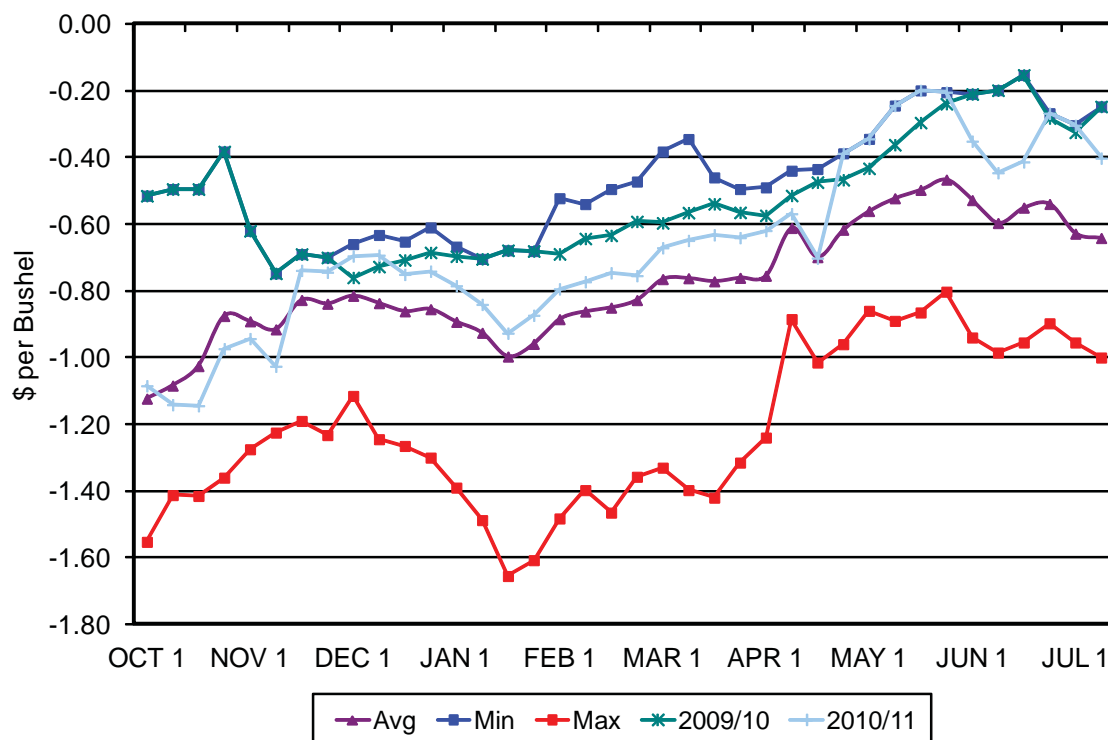


Table 7. July Bean Basis for Iowa State Average.

Mo/Wk	July			2009/10	2010/11	Mo/Wk	July			2009/10	2010/11
	Avg	Min	Max				Avg	Min	Max		
OCT 1	-1.11	-0.50	-1.50	-0.50	-1.02	FEB 4	-0.81	-0.49	-1.23	-0.61	-0.78
OCT 2	-1.06	-0.45	-1.39	-0.45	-1.05	MAR 1	-0.76	-0.37	-1.23	-0.61	-0.71
OCT 3	-1.04	-0.65	-1.38	-0.65	-1.05	MAR 2	-0.79	-0.35	-1.38	-0.60	-0.72
OCT 4	-0.85	-0.36	-1.25	-0.36	-0.90	MAR 3	-0.78	-0.45	-1.30	-0.59	-0.70
NOV 1	-0.88	-0.57	-1.20	-0.57	-0.91	MAR 4	-0.77	-0.48	-1.27	-0.57	-0.70
NOV 2	-0.89	-0.71	-1.06	-0.71	-1.00	APR 1	-0.75	-0.48	-1.21	-0.57	-0.67
NOV 3	-0.79	-0.63	-1.04	-0.63	-0.69	APR 2	-0.62	-0.43	-0.84	-0.57	-0.64
NOV 4	-0.81	-0.68	-1.08	-0.68	-0.69	APR 3	-0.72	-0.44	-1.02	-0.55	-0.80
DEC 1	-0.82	-0.66	-1.08	-0.75	-0.66	APR 4	-0.64	-0.44	-0.92	-0.54	-0.50
DEC 2	-0.85	-0.66	-1.17	-0.75	-0.66	MAY 1	-0.59	-0.39	-0.84	-0.54	-0.45
DEC 3	-0.87	-0.71	-1.21	-0.75	-0.71	MAY 2	-0.56	-0.38	-0.85	-0.48	-0.39
DEC 4	-0.86	-0.71	-1.26	-0.73	-0.71	MAY 3	-0.54	-0.35	-0.86	-0.40	-0.35
JAN 1	-0.88	-0.71	-1.28	-0.71	-0.76	MAY 4	-0.53	-0.34	-0.82	-0.34	-0.34
JAN 2	-0.93	-0.72	-1.40	-0.72	-0.82	JUN 1	-0.53	-0.32	-0.83	-0.32	-0.38
JAN 3	-0.98	-0.70	-1.54	-0.70	-0.89	JUN 2	-0.59	-0.30	-0.85	-0.30	-0.41
JAN 4	-0.94	-0.72	-1.42	-0.72	-0.85	JUN 3	-0.55	-0.25	-0.88	-0.25	-0.42
FEB 1	-0.86	-0.58	-1.29	-0.71	-0.79	JUN 4	-0.56	-0.33	-0.88	-0.33	-0.38
FEB 2	-0.84	-0.57	-1.26	-0.63	-0.78	JUL 1	-0.63	-0.36	-0.96	-0.36	-0.37
FEB 3	-0.84	-0.51	-1.33	-0.64	-0.78	JUL 2	-0.66	-0.22	-1.04	-0.22	-0.40

Figure 7. July Bean Basis for Iowa State Average 2009/10 - 2010/11 - Avg, Max, Min.

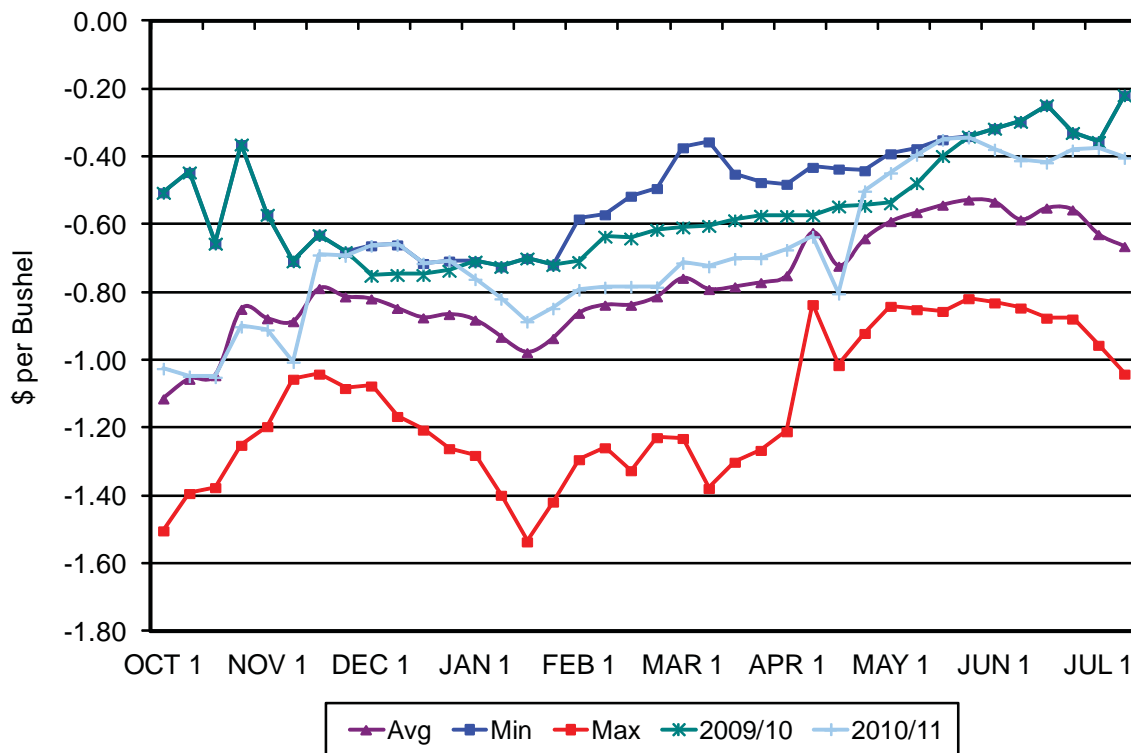


Table 8. July Bean Basis for Clinton - North River Market.

Mo/Wk	July			2009/10	2010/11	Mo/Wk	July			2009/10	2010/11
	Avg	Min	Max				Avg	Min	Max		
OCT 1	-0.91	-0.17	-1.32	-0.17	-0.79	FEB 4	-0.61	-0.16	-1.00	-0.37	
OCT 2	-0.81	0.03	-1.19	0.03	-0.89	MAR 1	-0.51	0.05	-1.02	-0.35	-0.51
OCT 3	-0.74	-0.07	-1.11	-0.07	-0.82	MAR 2	-0.56	0.03	-1.19	-0.33	-0.58
OCT 4	-0.58	-0.04	-1.00	-0.04	-0.57	MAR 3	-0.51	-0.01	-0.94	-0.32	-0.51
NOV 1	-0.72	-0.43	-0.89	-0.43	-0.69	MAR 4	-0.50	-0.01	-1.03	-0.30	-0.40
NOV 2	-0.61	-0.48	-0.70	-0.53	-0.48	APR 1	-0.47	-0.07	-1.04	-0.23	-0.40
NOV 3	-0.48	-0.21	-0.73	-0.39	-0.21	APR 2	-0.32	-0.03	-0.64	-0.38	-0.36
NOV 4	-0.61	-0.30	-0.83	-0.54	-0.30	APR 3	-0.38	-0.02	-0.73	-0.31	-0.28
DEC 1	-0.61	-0.26	-0.81	-0.56	-0.26	APR 4	-0.35	-0.05	-0.58	-0.28	-0.31
DEC 2	-0.64	-0.47	-0.86	-0.58	-0.47	MAY 1	-0.37	0.08	-0.70	-0.40	-0.27
DEC 3	-0.74	-0.55	-0.94	-0.55		MAY 2	-0.32	0.10	-0.77	-0.26	-0.20
DEC 4	-0.73	-0.50	-0.97	-0.50		MAY 3	-0.28	0.08	-0.70	-0.11	-0.12
JAN 1	-0.79	-0.52	-1.06	-0.52		MAY 4	-0.30	0.02	-0.72	-0.01	-0.18
JAN 2	-0.79	-0.54	-1.13	-0.54		JUN 1	-0.28	0.05	-0.72	0.05	-0.16
JAN 3	-0.83	-0.53	-1.31	-0.53		JUN 2	-0.26	0.17	-0.68	0.17	-0.15
JAN 4	-0.78	-0.56	-1.20	-0.57		JUN 3	-0.26	0.05	-0.80	0.05	-0.15
FEB 1	-0.62	-0.35	-1.00	-0.51		JUN 4	-0.23	0.09	-0.63	0.01	-0.18
FEB 2	-0.57	-0.35	-0.96	-0.39		JUL 1	-0.30	0.03	-0.70	-0.06	-0.11
FEB 3	-0.59	-0.27	-1.11	-0.38		JUL 2	-0.35	0.14	-0.94	0.14	-0.10

Figure 8. July Bean Basis for Clinton - North River Market 2009/10 - 2010/11 - Avg, Max, Min.

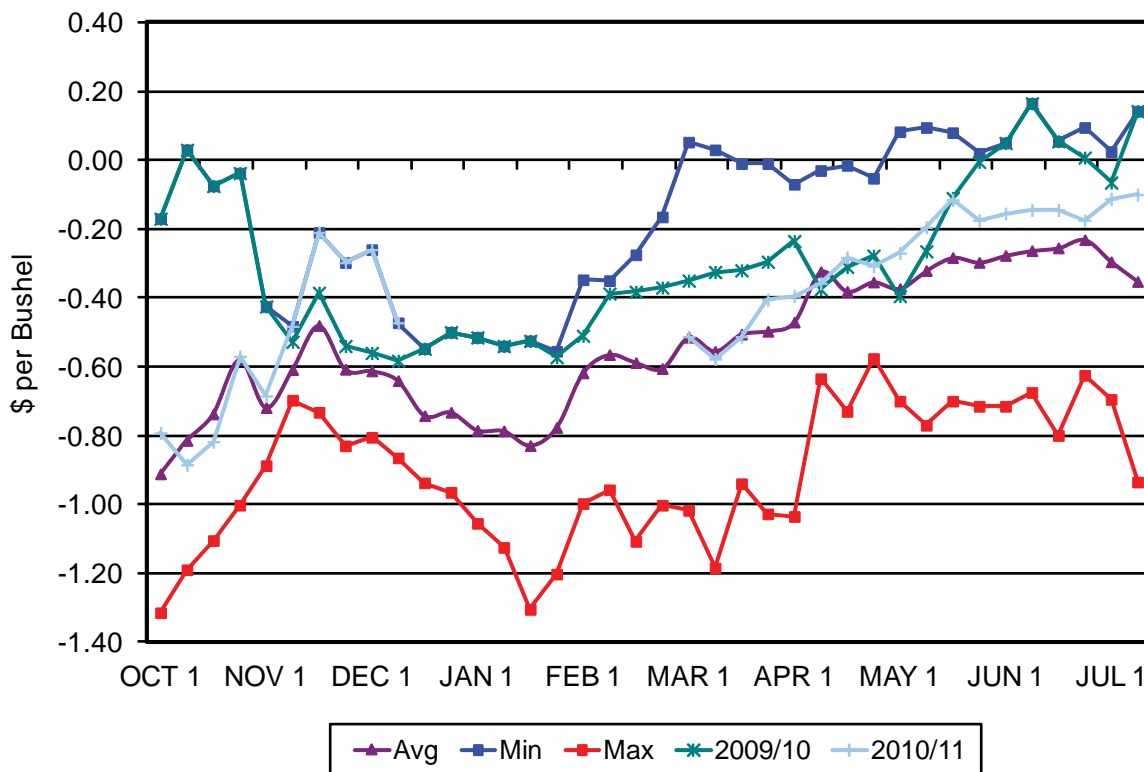


Table 9. July Bean Basis for Davenport - South River Market.

MMo/Wk	July			2009/10	2010/11	Mo/Wk	July			2009/10	2010/11
	Avg	Min	Max				Avg	Min	Max		
OCT 1	-0.80	-0.16	-1.17	-0.16	-0.66	FEB 4	-0.33	-0.06	-0.52	-0.41	-0.52
OCT 2	-0.70	0.06	-1.04	0.06	-0.72	MAR 1	-0.41	0.10	-1.03	-0.34	-0.36
OCT 3	-0.66	-0.03	-0.98	-0.03	-0.74	MAR 2	-0.49	0.07	-1.07	-0.34	-0.46
OCT 4	-0.52	0.02	-0.92	0.02	-0.51	MAR 3	-0.45	0.05	-0.84	-0.32	-0.41
NOV 1	-0.63	-0.35	-0.78	-0.35	-0.61	MAR 4	-0.51	0.02	-1.03		-0.34
NOV 2	-0.52	-0.33	-0.64	-0.48	-0.33	APR 1	-0.42	-0.03	-0.88	-0.25	-0.40
NOV 3	-0.41	-0.15	-0.65	-0.32	-0.15	APR 2	-0.27	0.01	-0.58	-0.33	-0.28
NOV 4	-0.44	-0.18	-0.59	-0.47	-0.18	APR 3	-0.33	0.02	-0.65	-0.29	-0.25
DEC 1	-0.45	-0.21	-0.66	-0.46	-0.21	APR 4	-0.31	-0.02	-0.54	-0.26	-0.21
DEC 2	-0.54	-0.32	-0.79	-0.45	-0.32	MAY 1	-0.30	0.13	-0.62	-0.32	-0.17
DEC 3	-0.65	-0.39	-0.87		-0.39	MAY 2	-0.26	0.15	-0.69	-0.23	-0.12
DEC 4	-0.64	-0.38	-0.88		-0.38	MAY 3	-0.23	0.13	-0.64	-0.07	-0.05
JAN 1	-0.67	-0.41	-0.93		-0.41	MAY 4	-0.24	0.08	-0.68	0.02	-0.07
JAN 2	-0.68	-0.44	-1.04	-0.64	-0.44	JUN 1	-0.23	0.08	-0.68	0.08	-0.07
JAN 3	-0.70	-0.49	-1.10	-0.59	-0.49	JUN 2	-0.20	0.20	-0.58	0.20	-0.06
JAN 4	-0.67	-0.47	-1.09	-0.57	-0.47	JUN 3	-0.15	0.09	-0.49	0.09	-0.07
FEB 1	-0.61	-0.34	-1.06	-0.53	-0.44	JUN 4	-0.17	0.15	-0.54	0.04	-0.06
FEB 2	-0.58	-0.27	-0.92	-0.48	-0.48	JUL 1	-0.23	0.09	-0.63	-0.05	-0.03
FEB 3	-0.50	-0.07	-0.92	-0.48	-0.52	JUL 2	-0.27	0.12	-0.83	0.12	-0.04

Figure 9. July Bean Basis for Davenport-South River Market 2009/10 - 2010/11 - Avg, Max, Min.

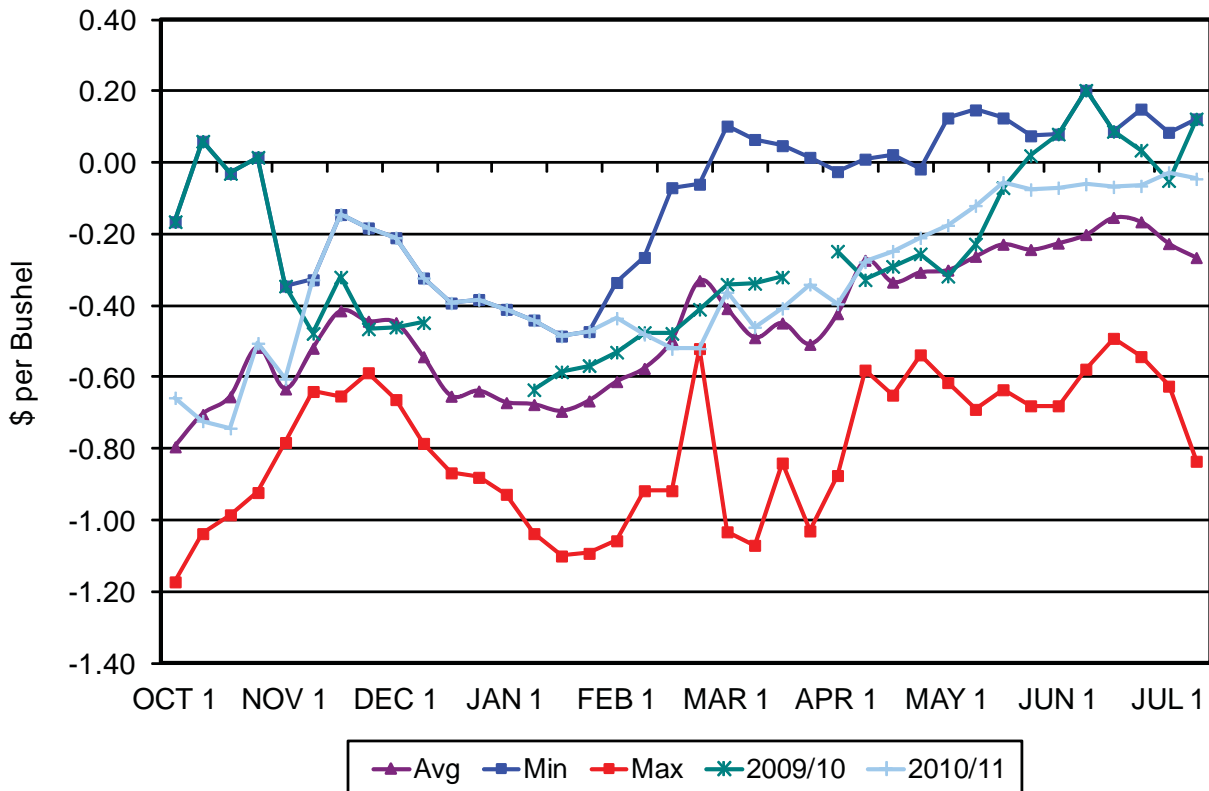


Table 10. July Bean Basis for Omaha Market.

Mo/Wk	July			2009/10	2010/11	Mo/Wk	July			2009/10	2010/11
	Avg	Min	Max				Avg	Min	Max		
OCT 1	-0.93	-0.31	-1.32	-0.31	-0.96	FEB 4	-0.57	-0.15	-1.09	-0.38	-0.47
OCT 2	-0.87	-0.28	-1.19	-0.28	-1.02	MAR 1	-0.51	-0.03	-1.08	-0.35	-0.35
OCT 3	-0.82	-0.26	-1.20	-0.26	-1.02	MAR 2	-0.48	0.00	-1.13	-0.28	-0.36
OCT 4	-0.63	-0.12	-1.18	-0.12	-0.76	MAR 3	-0.49	-0.17	-1.13	-0.24	-0.35
NOV 1	-0.66	-0.38	-1.12	-0.38	-0.69	MAR 4	-0.50	-0.25	-1.07	-0.27	-0.32
NOV 2	-0.60	-0.40	-0.98	-0.49	-0.52	APR 1	-0.49	-0.19	-0.97	-0.27	-0.34
NOV 3	-0.56	-0.33	-0.94	-0.41	-0.50	APR 2	-0.34	-0.13	-0.75	-0.19	-0.24
NOV 4	-0.56	-0.35	-0.96	-0.41	-0.48	APR 3	-0.37	-0.13	-0.73	-0.15	-0.14
DEC 1	-0.54	-0.30	-0.84	-0.47	-0.45	APR 4	-0.31	0.02	-0.68	-0.15	0.02
DEC 2	-0.55	-0.27	-0.96	-0.41	-0.43	MAY 1	-0.24	0.04	-0.55	-0.09	0.04
DEC 3	-0.58	-0.30	-0.99	-0.37	-0.49	MAY 2	-0.20	0.15	-0.57	0.00	0.15
DEC 4	-0.57	-0.12	-1.07	-0.42	-0.47	MAY 3	-0.18	0.19	-0.63	0.04	0.19
JAN 1	-0.59	-0.34	-1.13	-0.34	-0.56	MAY 4	-0.15	0.19	-0.62	0.12	0.19
JAN 2	-0.69	-0.41	-1.29	-0.41	-0.62	JUN 1	-0.26	0.14	-0.88	0.14	0.05
JAN 3	-0.77	-0.36	-1.44	-0.36	-0.80	JUN 2	-0.38	0.14	-1.05	0.14	-0.25
JAN 4	-0.74	-0.34	-1.44	-0.34	-0.71	JUN 3	-0.32	0.17	-0.98	0.17	-0.08
FEB 1	-0.63	-0.20	-1.27	-0.39	-0.60	JUN 4	-0.28	0.15	-0.72	-0.01	0.15
FEB 2	-0.64	-0.21	-1.23	-0.39	-0.53	JUL 1	-0.35	0.05	-0.73	-0.01	0.05
FEB 3	-0.61	-0.15	-1.29	-0.43	-0.46	JUL 2	-0.43	0.02	-0.81	0.02	-0.08

Figure 10. July Bean Basis for Omaha Market 2009/10 - 2010/11 - Avg, Max, Min.

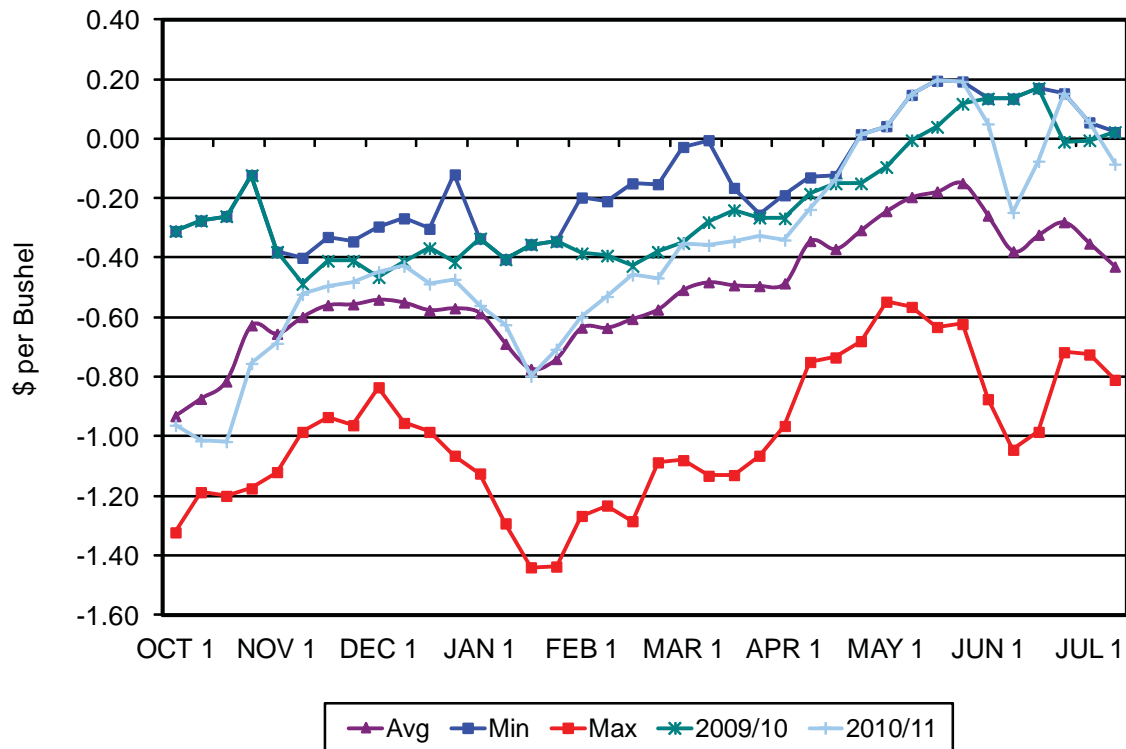
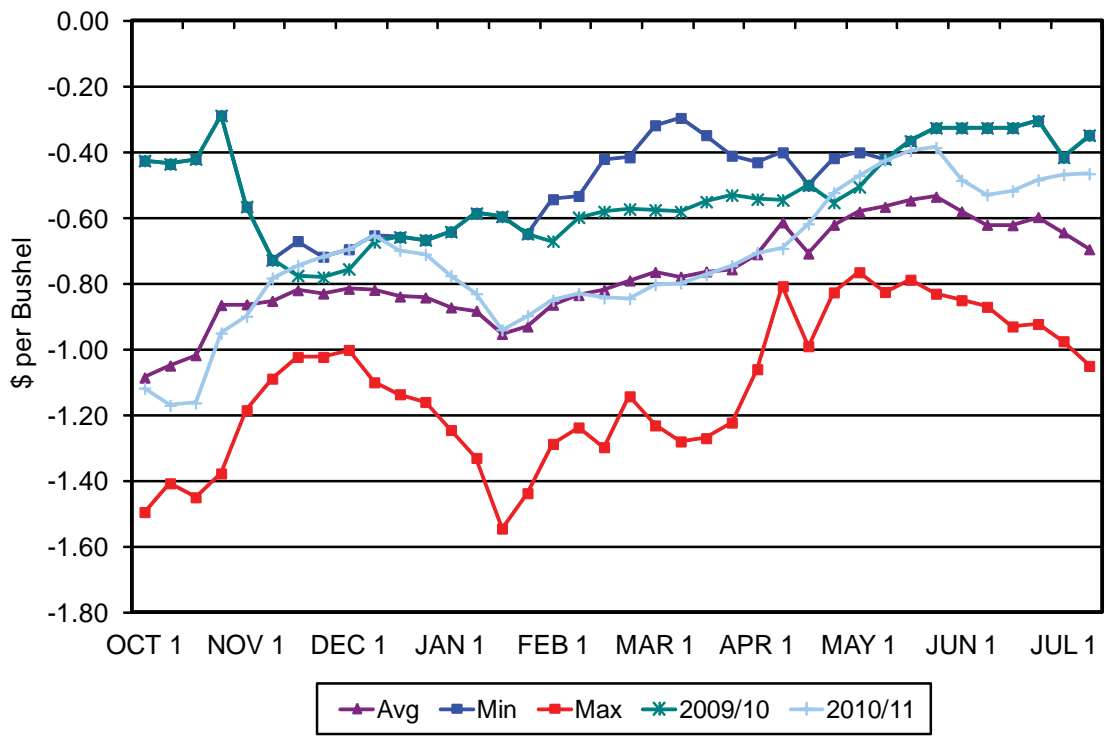


Table 11. July Bean Basis for Southern Minnesota Average.

Mo/Wk	July					Mo/Wk	July				
	Avg	Min	Max	2009/10	2010/11		Avg	Min	Max	2009/10	2010/11
OCT 1	-1.09	-0.43	-1.50	-0.43	-1.12	FEB 4	-0.79	-0.41	-1.14	-0.57	-0.85
OCT 2	-1.05	-0.43	-1.41	-0.43	-1.17	MAR 1	-0.76	-0.32	-1.23	-0.58	-0.80
OCT 3	-1.02	-0.42	-1.45	-0.42	-1.16	MAR 2	-0.78	-0.30	-1.28	-0.58	-0.80
OCT 4	-0.87	-0.29	-1.38	-0.29	-0.95	MAR 3	-0.76	-0.35	-1.27	-0.55	-0.77
NOV 1	-0.86	-0.57	-1.19	-0.57	-0.90	MAR 4	-0.76	-0.41	-1.22	-0.53	-0.74
NOV 2	-0.85	-0.73	-1.09	-0.73	-0.78	APR 1	-0.71	-0.43	-1.06	-0.54	-0.71
NOV 3	-0.82	-0.67	-1.02	-0.78	-0.74	APR 2	-0.61	-0.40	-0.81	-0.55	-0.69
NOV 4	-0.83	-0.72	-1.02	-0.78	-0.72	APR 3	-0.71	-0.50	-0.99	-0.50	-0.62
DEC 1	-0.82	-0.70	-1.00	-0.76	-0.70	APR 4	-0.62	-0.42	-0.83	-0.55	-0.52
DEC 2	-0.82	-0.65	-1.10	-0.67	-0.65	MAY 1	-0.58	-0.40	-0.77	-0.50	-0.47
DEC 3	-0.84	-0.66	-1.14	-0.66	-0.70	MAY 2	-0.57	-0.42	-0.82	-0.42	-0.42
DEC 4	-0.84	-0.67	-1.16	-0.67	-0.71	MAY 3	-0.55	-0.37	-0.79	-0.37	-0.40
JAN 1	-0.87	-0.64	-1.25	-0.64	-0.77	MAY 4	-0.54	-0.32	-0.83	-0.32	-0.39
JAN 2	-0.88	-0.59	-1.33	-0.59	-0.83	JUN 1	-0.58	-0.33	-0.85	-0.33	-0.48
JAN 3	-0.95	-0.60	-1.55	-0.60	-0.94	JUN 2	-0.62	-0.32	-0.87	-0.32	-0.53
JAN 4	-0.93	-0.65	-1.44	-0.65	-0.90	JUN 3	-0.62	-0.32	-0.93	-0.32	-0.52
FEB 1	-0.86	-0.54	-1.29	-0.67	-0.85	JUN 4	-0.60	-0.30	-0.92	-0.30	-0.48
FEB 2	-0.83	-0.53	-1.24	-0.60	-0.83	JUL 1	-0.64	-0.42	-0.98	-0.42	-0.47
FEB 3	-0.82	-0.42	-1.30	-0.58	-0.84	JUL 2	-0.70	-0.35	-1.05	-0.35	-0.47

Figure 11. July Bean Basis for Southern Minnesota Average 2009/10 - 2010/11 - Avg, Max, Min.



... and justice for all
 The U.S. Department of Agriculture (USDA) prohibits discrimination in all its programs and activities on the basis of race, color, national origin, gender, religion, age, disability, political beliefs, sexual orientation, and marital or family status. (Not all prohibited bases apply to all programs.) Many materials can be made available in alternative formats for ADA clients. To file a complaint of discrimination, write

USDA, Office of Civil Rights, Room 326-W, Whitten Building, 14th and Independence Avenue, SW, Washington, DC 20250-9410 or call 202-720-5964.

Issued in furtherance of Cooperative Extension work, Acts of May 8 and July 30, 1914, in cooperation with the U.S. Department of Agriculture. Cathann A. Kress, director, Cooperative Extension Service, Iowa State University of Science and Technology, Ames, Iowa.