

Table 2. North Central District average soybean yields, 2001-2010. (bu./acre)

Soybean Yields	2001	2002	2003	2004	2005	2006	2007	2008	2009	2010	Avg.
Butler	45	49	24	50	54	52	52	48	48	55	48
Cerro Gordo	44	45	29	44	52	49	51	45	47	52	46
Floyd	42	48	26	45	53	50	52	45	48	53	46
Franklin	43	48	32	48	52	53	51	45	50	50	47
Hancock	42	50	34	43	54	50	53	50	50	51	48
Humboldt	43	47	34	47	52	53	52	50	54	46	48
Kossuth	41	48	34	43	55	53	53	48	53	53	48
Mitchell	35	50	31	44	54	53	54	45	46	54	46
Winnebago	37	48	36	42	53	53	55	47	50	52	47
Worth	38	51	33	41	53	49	52	46	43	53	46
Wright	40	47	34	49	51	52	51	47	52	42	47
North Central	41	48	32	45	53	52	52	47	50	51	47

Figure 2. North Central District average soybean yields, 2001-2010.

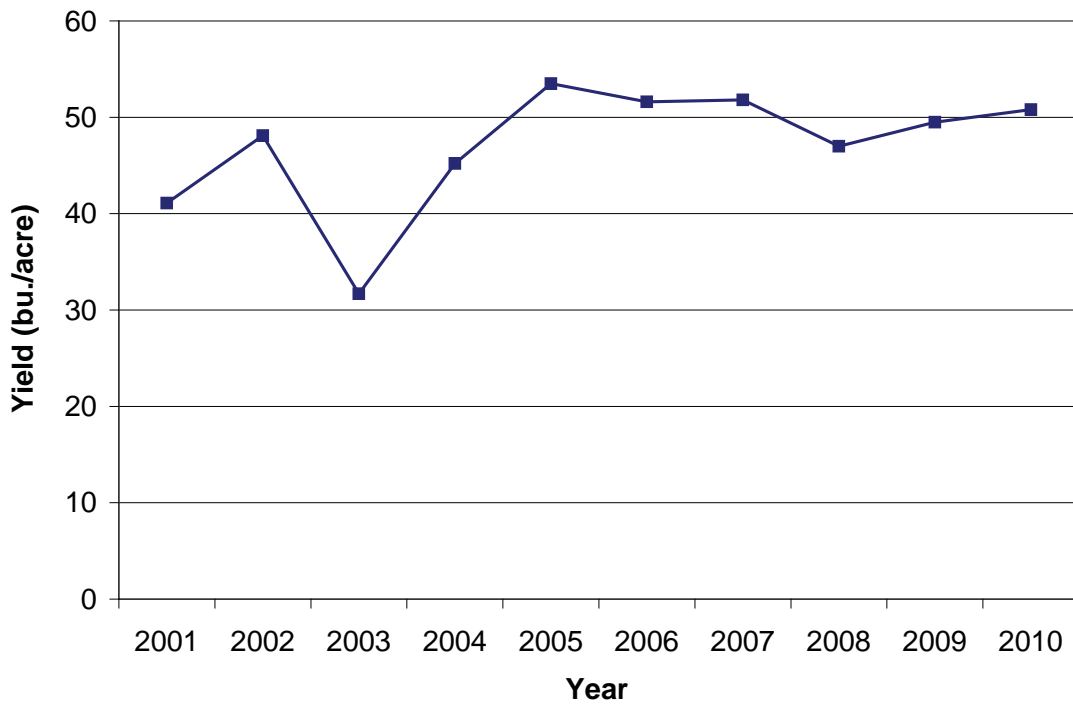


Table 3. Northeast District average soybean yields, 2001-2010. (bu./acre)

Soybean Yields	2001	2002	2003	2004	2005	2006	2007	2008	2009	2010	Avg.
Allamakee	41	51	32	43	57	49	48	42	46	52	46
Black Hawk	46	51	25	51	54	53	53	50	48	52	48
Bremer	45	53	24	50	59	52	54	45	51	53	48
Buchanan	45	49	26	45	54	53	51	47	44	51	46
Chickasaw	35	50	23	45	57	50	50	45	47	54	46
Clayton	47	55	37	49	58	54	52	51	49	57	51
Delaware	49	54	30	49	55	56	54	47	50	56	50
Dubuque	48	52	34	50	60	56	54	45	51	54	50
Fayette	42	51	25	47	59	53	51	45	43	53	47
Howard	31	49	26	40	55	47	49	45	44	55	44
Winneshiek	35	52	32	43	56	49	51	45	45	55	46
Northeast	42	51	27	47	56	52	51	46	47	54	47

Figure 3. Northeast District average soybean yields, 2001-2010.

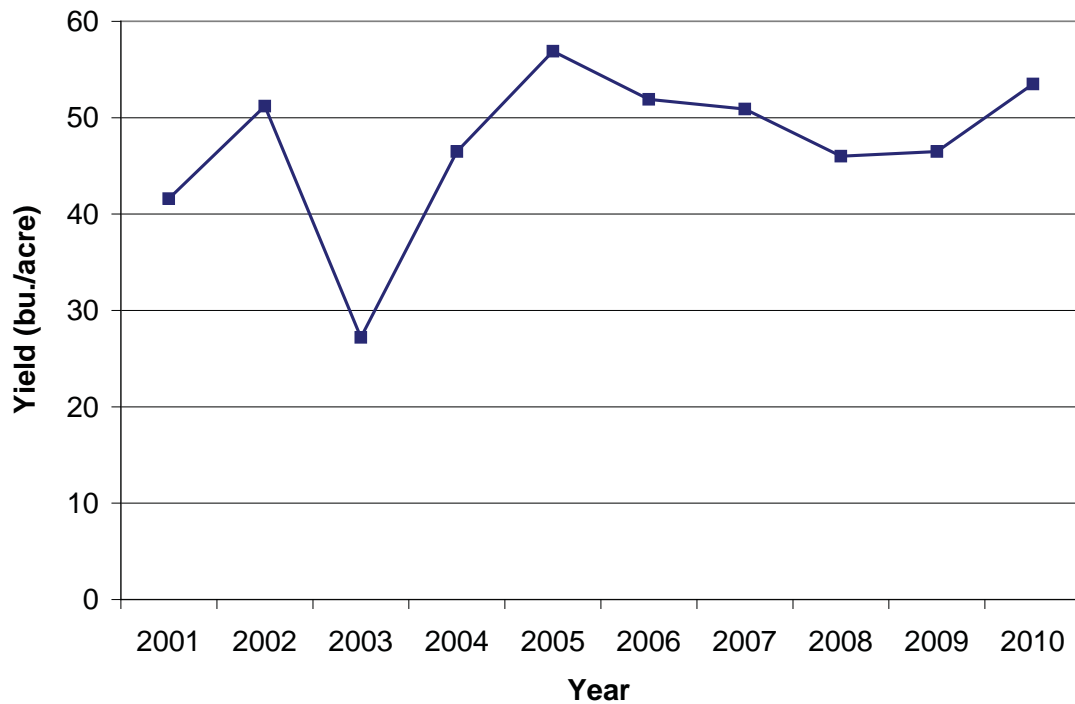


Table 4. West Central District average soybean yields, 2001-2010. (bu./acre)

Soybean Yields	2001	2002	2003	2004	2005	2006	2007	2008	2009	2010	Avg.
Audubon	40	48	31	52	55	51	53	50	56	55	49
Calhoun	44	51	33	46	52	49	52	49	46	48	47
Carroll	46	52	36	51	53	49	51	50	55	53	50
Crawford	48	51	33	49	55	50	50	54	53	57	50
Greene	42	49	37	49	54	48	53	47	54	48	48
Guthrie	38	46	27	47	52	46	50	44	48	50	45
Harrison	43	44	34	46	42	44	50	40	52	48	44
Ida	48	53	37	50	53	46	50	50	53	55	49
Monona	44	42	36	43	42	46	49	45	54	49	45
Sac	48	53	31	48	55	47	54	51	50	55	49
Shelby	48	48	33	49	54	52	53	49	55	55	50
Woodbury	41	47	36	44	48	47	45	46	51	50	45
West Central	44	49	34	48	51	48	51	48	52	52	48

Figure 4. West Central District average soybean yields, 2001-2010.

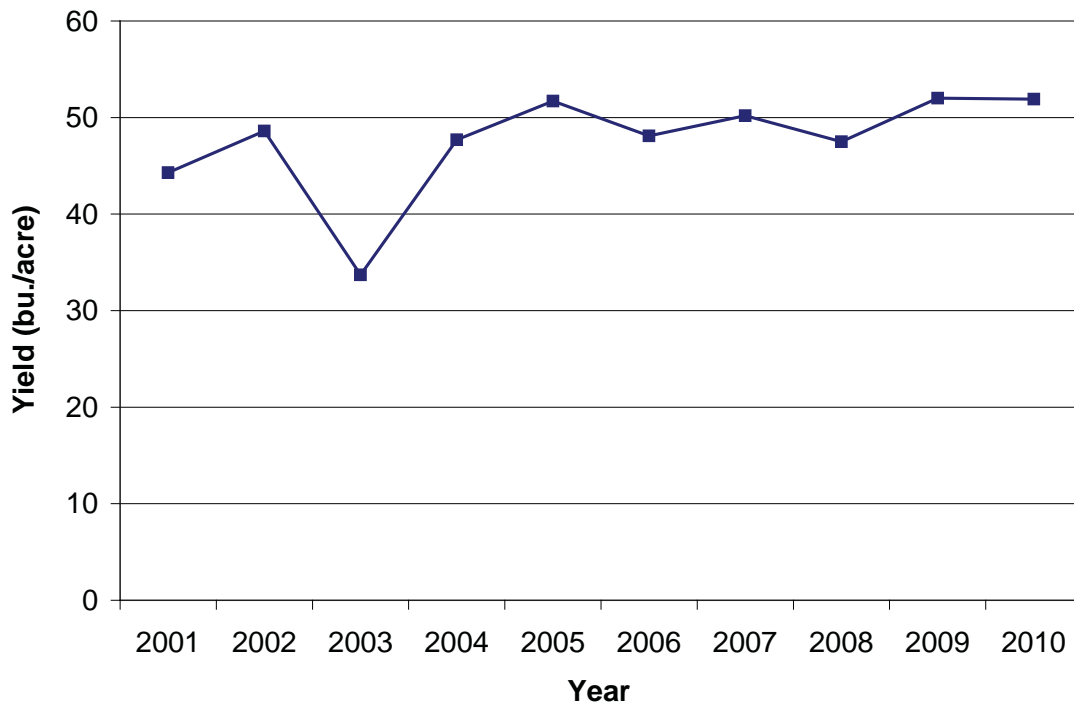


Table 5. Central District average soybean yields, 2001-2010 (bu./acre)

Soybean Yields	2001	2002	2003	2004	2005	2006	2007	2008	2009	2010	Avg.
Boone	40	48	35	52	56	50	54	44	52	47	48
Dallas	39	44	32	53	58	49	54	47	55	50	48
Grundy	48	54	37	54	60	56	57	54	51	60	53
Hamilton	42	49	34	50	53	49	50	47	45	48	47
Hardin	44	50	34	50	55	57	54	49	46	55	49
Jasper	49	54	32	55	57	53	57	53	57	48	51
Marshall	50	54	32	52	61	57	59	51	55	57	53
Polk	43	47	33	50	51	50	52	45	54	46	47
Poweshiek	49	52	32	53	56	54	58	49	58	51	51
Story	43	46	32	50	59	52	54	47	53	48	48
Tama	50	53	31	53	57	55	55	50	55	55	51
Webster	43	50	35	48	51	49	51	48	48	46	47
Central	45	50	33	52	56	53	55	49	52	51	50

Figure 5. Central District average soybean yields, 2001-2010.

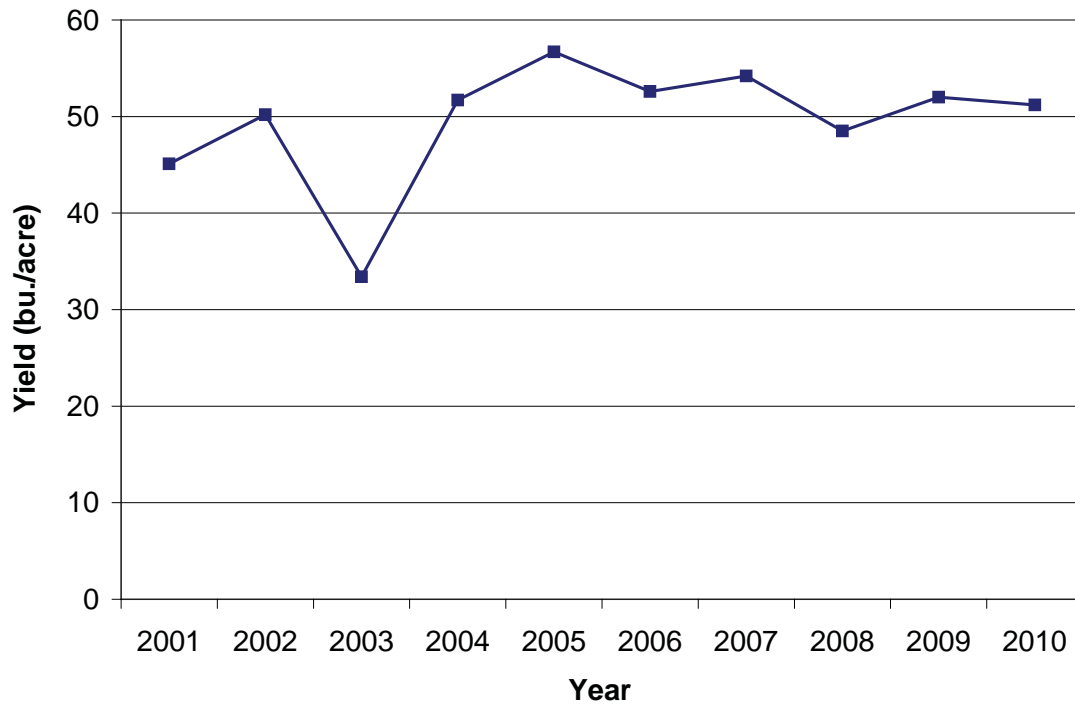


Table 6. East Central District average soybean yields, 2001-2010. (bu./acre)

Soybean Yields	2001	2002	2003	2004	2005	2006	2007	2008	2009	2010	Avg.
Benton	51	50	30	50	54	53	55	51	53	53	50
Cedar	51	51	36	50	48	51	52	49	54	53	49
Clinton	50	50	32	50	43	53	51	48	52	51	48
Iowa	48	51	31	52	49	52	55	47	54	52	49
Jackson	50	49	33	51	46	52	52	47	53	52	48
Johnson	47	49	32	49	46	49	50	46	52	49	47
Jones	50	50	32	47	52	52	53	47	50	53	49
Linn	47	48	29	48	49	49	51	47	51	54	47
Muscatine	46	49	35	52	48	49	50	45	52	49	47
Scott	54	54	38	52	51	55	52	51	54	52	51
East Central	49	50	32	50	49	52	52	48	53	52	49

Figure 6. East Central District average soybean yields, 2001-2010.

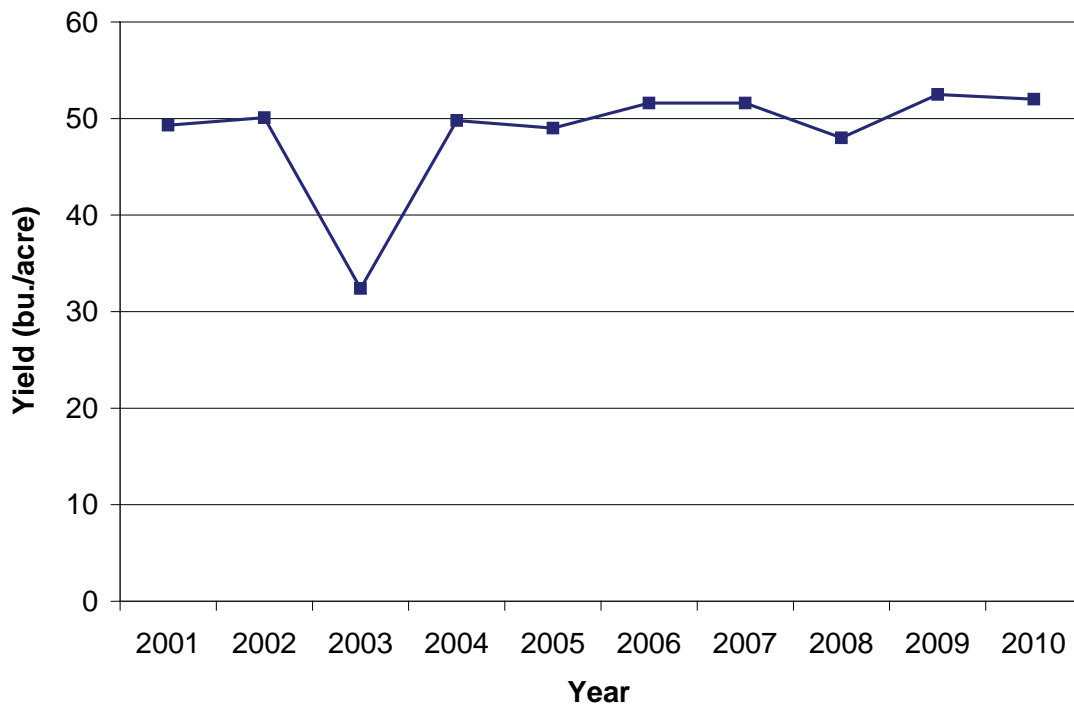


Table 7. Southwest District average soybean yields, 2001-2010. (bu./acre)

Soybean Yields	2001	2002	2003	2004	2005	2006	2007	2008	2009	2010	Avg.
Adair	39	47	28	52	49	51	53	46	52	49	47
Adams	41	44	28	51	50	45	52	39	51	48	45
Cass	44	42	30	53	52	52	51	46	55	53	48
Fremont	48	38	35	51	49	48	51	42	56	47	46
Mills	44	39	29	50	50	51	51	42	55	51	46
Montgomery	44	46	30	52	48	51	52	38	56	50	47
Page	46	37	30	50	51	48	52	38	53	48	45
Pottawattamie	46	45	30	51	55	53	52	42	53	52	48
Taylor	40	41	29	48	53	43	45	34	45	47	43
Southwest	44	42	30	51	51	50	51	41	53	50	46

Figure 7. Southwest District average soybean yields, 2001-2010.

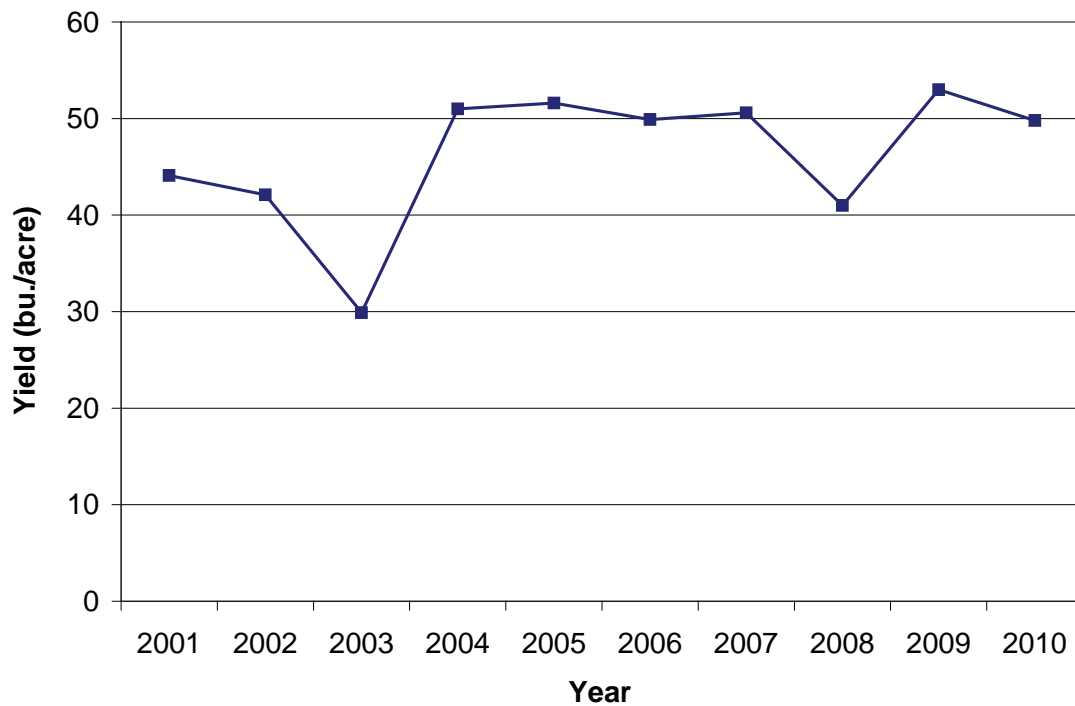


Table 8. South Central District average soybean yields, 2001-2010. (bu./acre)

Soybean Yields	2001	2002	2003	2004	2005	2006	2007	2008	2009	2010	Avg.
Appanoose	41	40	31	52	44	42	46	31	43	43	41
Clarke	38	38	26	45	47	43	46	27	38	41	39
Decatur	37	41	26	50	52	46	49	32	45	43	42
Lucas	35	40	29	48	48	42	44	29	39	42	40
Madison	42	48	28	50	50	50	54	42	50	49	46
Marion	45	47	30	50	52	47	52	45	53	47	47
Monroe	40	41	24	48	49	41	49	34	47	45	42
Ringgold	39	42	27	47	53	42	46	27	46	44	41
Union	42	45	26	48	52	46	52	38	52	48	45
Warren	45	46	27	52	50	50	55	42	52	48	47
Wayne	40	39	27	49	52	40	51	31	34	43	41
South Central	41	43	28	49	50	45	50	36	46	45	43

Figure 8. South Central District average soybean yields, 2001-2010.

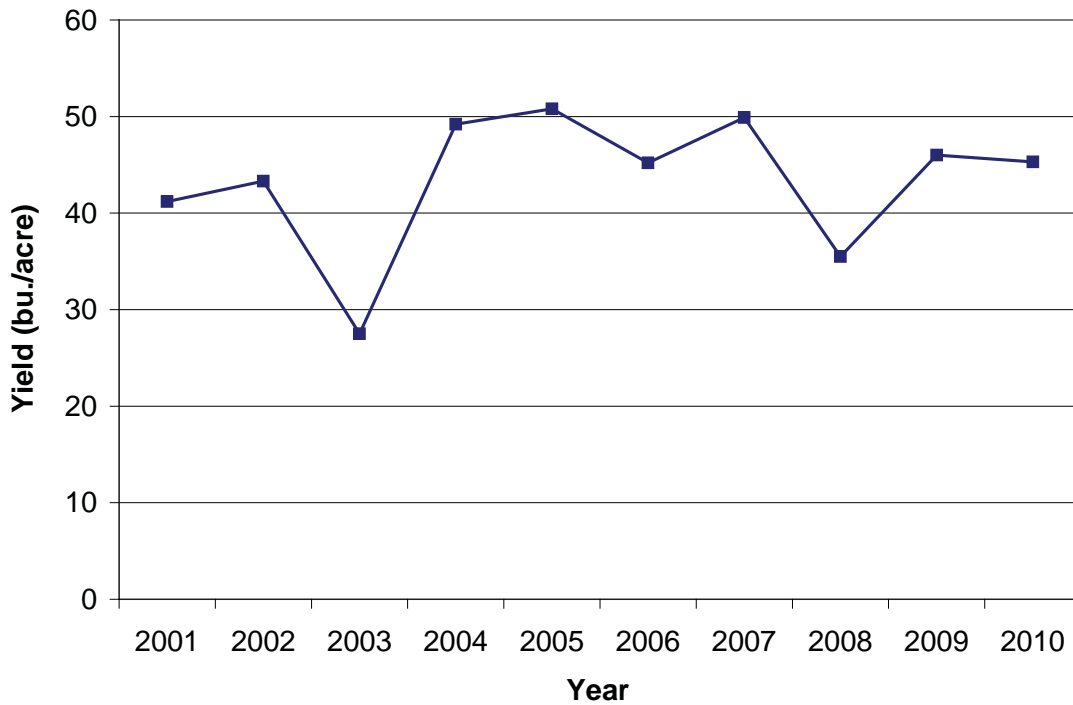


Table 9. Southeast District average soybean yields, 2001-2010. (bu./acre)

Soybean Yields	2001	2002	2003	2004	2005	2006	2007	2008	2009	2010	Avg.
Davis	39	39	33	53	41	45	48	37	40	47	42
Des Moines	44	47	36	56	51	48	52	47	51	51	48
Henry	43	47	36	54	51	49	51	48	52	50	48
Jefferson	41	37	32	54	53	47	46	42	52	47	45
Keokuk	43	45	32	53	50	46	51	47	54	45	47
Lee	44	42	36	55	46	45	49	43	49	49	46
Louisa	43	47	30	50	47	46	49	47	52	48	46
Mahaska	44	48	38	54	54	50	56	48	56	47	49
Van Buren	39	36	34	53	46	45	48	41	46	48	44
Wapello	40	38	30	54	49	47	46	43	47	46	44
Washington	45	49	33	53	50	49	51	51	53	47	48
Southeast	43	44	34	53	50	47	50	46	51	48	47

Figure 9. Southeast District average soybean yields, 2001-2010.

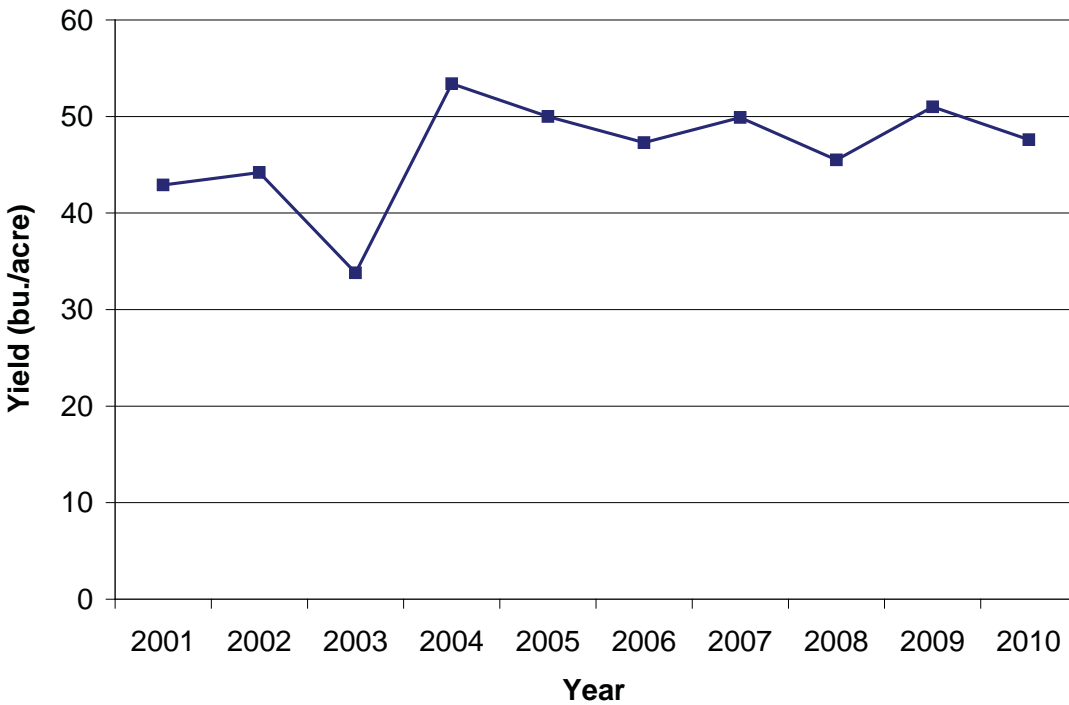
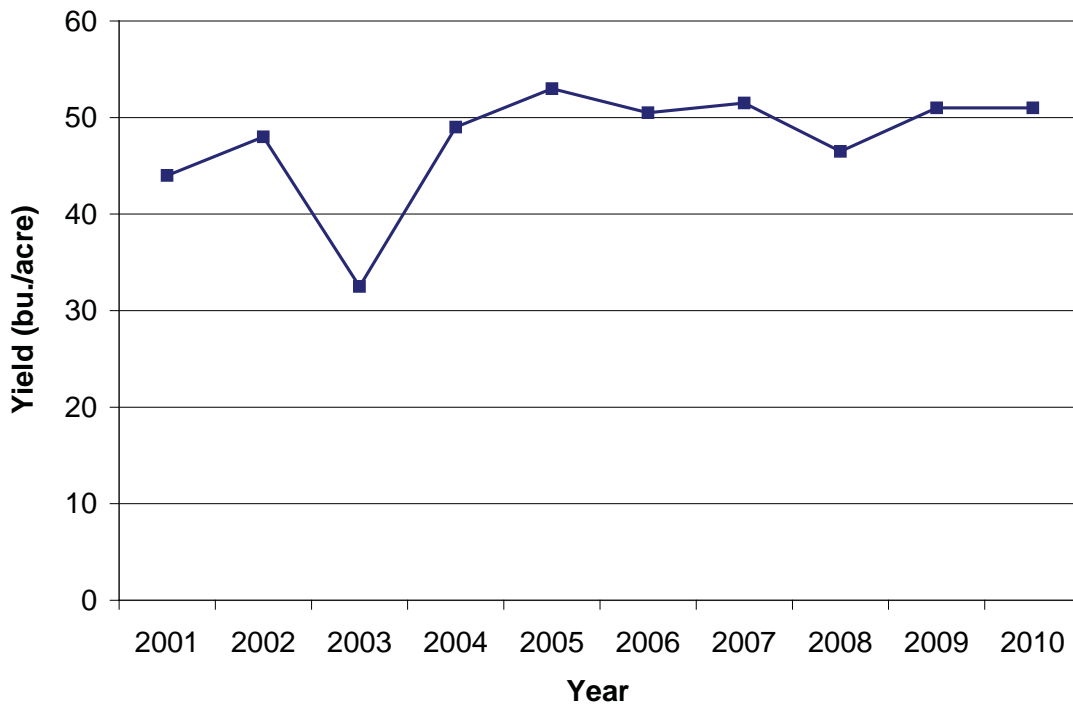


Table 10. District average soybean yields, 2001-2010. (bu./acre)

Soybean Yields	2001	2002	2003	2004	2005	2006	2007	2008	2009	2010	Avg.
Northwest	45	49	37	49	53	52	53	51	53	53	49
North Central	41	48	32	45	53	52	52	47	50	51	47
Northeast	42	51	27	47	56	52	51	46	47	54	47
West Central	44	49	34	48	51	48	51	48	52	52	48
Central	45	50	33	52	56	53	55	49	52	51	50
East Central	49	50	32	50	49	52	52	48	53	52	49
Southwest	44	42	30	51	51	50	51	41	53	50	46
South Central	41	43	28	49	50	45	50	36	46	45	43
Southeast	43	44	34	53	50	47	50	46	51	48	47
State Total	44	48	33	49	53	51	52	47	51	51	48

Figure 10. State average soybean yields, 2001-2010.



... and justice for all

The U.S. Department of Agriculture (USDA) prohibits discrimination in all its programs and activities on the basis of race, color, national origin, gender, religion, age, disability, political beliefs, sexual orientation, and marital or family status. (Not all prohibited bases apply to all programs.) Many materials can be made available in alternative formats for ADA clients. To file a complaint of discrimination, write USDA, Office of Civil Rights, Room 326-W, Whitten Building, 14th and Independence Avenue, SW, Washington, DC 20250-9410 or call 202-720-5964.

Issued in furtherance of Cooperative Extension work, Acts of May 8 and June 30, 1914, in cooperation with the U.S. Department of Agriculture. Gerald A. Miller, interim director, Cooperative Extension Service, Iowa State University of Science and Technology, Ames, Iowa.