

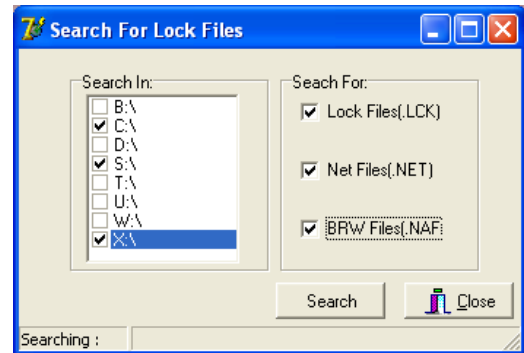
Error Creating Cursor Handle Youth Enrollment Help Sheet

Computers, unfortunately, speak a language all their own. That's okay, as long as they keep it to themselves. However, there are times that it'd be good to know what they're whining about—error messages. Here are some common error messages and the fix for them.

Error Creating Cursor Handle

Go to <http://www.extension.iastate.edu/4H/blueribbon/BRupdates.html> and scroll to the very bottom to find the “download Martech Locks” link.

1. When given a choice with the link, SAVE it to your desktop, don't run it.
2. When it's done saving, double-click to start it running and then set it up as shown at right.
3. Click search.
4. Be patient. It may take a bit, depending on how many files you have on S.
5. When it's done, there will be a list of files at the bottom.
6. Click Delete Files.



*****This should fix the problem, but if it does not, and you've done all the steps above correctly, log into your computer as Administrator, and run MartechLocks again, this time selecting only the C drive (the others aren't available when you're logged in as Administrator). Delete all that are found then as well. Then, log back in as yourself and see if Blue Ribbon runs correctly.**