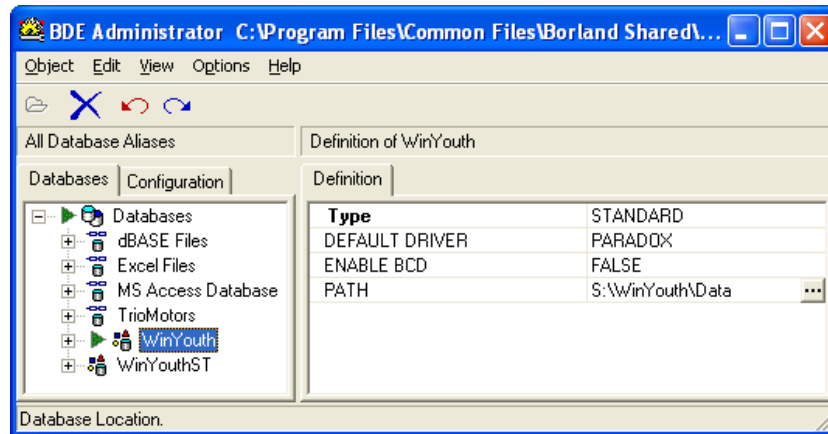


Setting BDE Administrator for Blue Ribbon

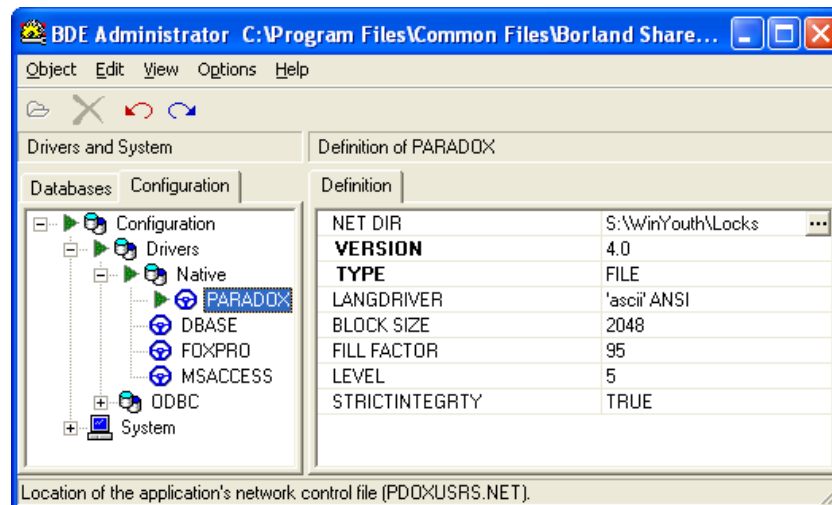
These settings must be identical on every Blue Ribbon computer in the office.

Go to your Start Menu, Programs, Youth Enrollment, BDE Admin. Click on the **Databases** tab.

- Select the WORD WinYouth. (Be sure not to click the “plus” sign or the icon)
- The Data path must be X:\Winyouth\CountyData (Use the “...” button to locate this directory. Be sure that the entire path is listed, and you’ve entered YOUR county name, not the word “County” (example: X:\Winyouth\AdairData)



- Now click on the **Configuration** tab.
- Click on the Plus Sign next to Configuration, then the Plus Sign next to Drivers, then the Plus Sign next to Native. Select the Paradox database.
- The Net-Dir must be X:\Winyouth\CountyLocks (Use the “...” button to locate this directory. Again, use your own county name instead of “County”).



- Now, on the left, click on the Plus Sign next to System
- Select the INIT entry
- The Local Share must be set to True
- Exit from BDE Admin, choosing “yes” or “OK” to all prompts to save changes.

